



Mobility for Scanco Multi-Bin Version 2020

Installation Guide

Version 6.2001

June 2020

© Copyright 2020 All rights reserved. Scanco Multi-Bin is a trademark of Scanco Software, LLC. Sage, the Sage logos, and the Sage product and service names mentioned herein are registered trademarks or trademarks of Sage Software, Inc., or its affiliated entities. All other trademarks are the property of their respective owners. The contents herein are summary in nature and subject to change without notification from Scanco Software, LLC. Scanco Software, LLC, accepts no responsibility for inadvertent errors or omissions.

Scanco Software, LLC
1000 N Tamiami Trail
Suite 201
Nokomis, FL 34275

Contents

Introduction to Mobility for Scanco Multi-Bin 4

About this Guide 4

Important Information 4

Mobility for Scanco Multi-Bin Pre-Installation Checklist 5

Mobility for Scanco Multi-Bin Installation Checklists 6

New Installation of Mobility for Scanco Multi-Bin 6

Upgrading Sage 100, Scanco Multi-Bin, and Mobility for Scanco Multi-Bin 7

Installing Mobility for Scanco Multi-Bin 8

How to Install Mobility for Scanco Multi-Bin 8

Mobility for Scanco Multi-Bin Hot Fixes 12

How to Install Mobility for Sage Production Management Hot Fixes 12

Introduction to Mobility for Scanco Multi-Bin

About this Guide


This guide provides the information necessary for installing Mobility for Scanco Multi-Bin. Mobility for Scanco Multi-Bin provides the necessary enhancements to Sage's Mobility for Barcode Modules to accommodate the changes for Scanco Multi-Bin for use with the Warehouse 100 mobile application.


Important Information

Read this guide completely before installing Mobility for Scanco Multi-Bin.

Before installing Mobility for Scanco Multi-Bin Version 2020.0, install and register Sage 100 Standard, Sage 100 Advanced or Sage 100 Premium 2020 and Scanco Multi-Bin Version 2020.0.

Refer to the Sage 100 Installation and System Administrator's Guide for information on installing Sage 100 Standard, Sage 100 Advanced or Sage 100 Premium. Refer to the Scanco Multi-Bin Version 2020.0 Installation Guide for information on installing Scanco Multi-Bin Version 2020.0.

 **Warning:** Install Mobility for Scanco Multi-Bin into a parallel test Sage 100 environment. Performing a test upgrade or a test new install allows you to resolve issues that may occur during the live upgrade or live new install, reducing downtime and allows you to get a rough estimate of how long the upgrade process will take. Refer to the [Sage Knowledgebase article ID 101266](#) for more information. As not noted in the Sage Knowledgebase article before step 20, third party products must be re-installed after a migration.

 **Warning:** Mobility for Scanco Multi-Bin 62001 may not be compatible with non-Scanco third party products. . If you use third-party products that integrate with your Sage product, check with the vendor of your third-party product to ensure their product is fully compatible with this release. If you integrate with other Sage products, check with your business partner or Sage to ensure that these components are compatible.

 **Note:** Please contact Scanco Support at support@scanco.com for assistance with Mobility for Scanco Multi-Bin.

Mobility for Scanco Multi-Bin Pre-Installation Checklist

Complete the following pre-installation checklist prior to installing Mobility for Scanco Multi-Bin Version 2020.0 to ensure a successful installation.


- ❑ Do **not** install Mobility for Scanco Multi-Bin Version 2020 when custom modifications exist on Sage or Scanco modified modules or products. Custom modifications must be retrofitted to the current Sage 100 version. Please contact your Sage partner or your Scanco Account Rep for information on how to obtain a quote for custom modifications to be retrofitted to Sage 100 Version 2020 with Mobility for Scanco Multi-Bin.
- ❑ Do **not** install Mobility for Scanco Multi-Bin when extended solutions or third-party products are installed on the Sage 100 system. Please contact your Sage partner or your Scanco Account Rep for information on evaluating extended solutions or third-party software.
- ❑ Do **not** install Mobility for Scanco Multi-Bin when Sage Production Management 6.20.0.1.0 is installed in Sage 100 Version 2020.0. Mobility for Sage Production Management is available from <http://info.scanco.com/prod-mgmt-downloads>
- ❑ Do **not** install Mobility for Scanco Multi-Bin Operations Management 6.20.0.1.0 is installed in Sage 100 Version 2020.0. Mobility for Operations Management will be available soon.
- ❑ Confirm that the Sage 100 installed version is 6.20.0.1 for the Sage 100 Standard, Sage 100 Advanced or Sage 100 Premium system.
Access the Help menu > About Sage to review the currently installed Sage 100 version.
To review additional information on the currently installed Sage 100 system in the Sage 100 System Information window, select File menu > Run. Type *info in the Program field. Select the OK button.
- ❑ Confirm that Scanco Multi-Bin Version 2020.0 (62001) is installed.
- ❑ Backup the entire Sage 100 Standard, Sage 100 Advanced or Sage 100 Premium system, including programs and data files, after all data entry files are updated, and before installing Mobility for Scanco Multi-Bin Version 2020.
- ❑ Download the Mobility for Scanco Multi-Bin Version 2020 installation file <http://info.scanco.com/scanco-multibin-downloads>

Mobility for Scanco Multi-Bin Installation Checklists

New Installation of Mobility for Scanco Multi-Bin

- ❑ Complete the Mobility for Scanco Multi-Bin pre-installation checklist.
- ❑ Install Sage 100 2020.
Refer to the Sage 100 2020 Installation and System Administrator's Guide.
- ❑ Run the Sage 100 workstation setup process on all applicable workstations.
Refer to the Sage 100 2020 Installation and System Administrator's Guide.
- ❑ Install Scanco Multi-Bin Version 2020.0 (62001).
Refer to the Scanco Multi-Bin Version 2020.0 Installation Guide.
- ❑ If hot fixes are available on the Scanco Multi-Bin Downloads page for Version 2020.0, download and install the hot fixes.
Refer to the Scanco Multi-Bin Version 2020.0 Installation Guide.
- ❑ Install Mobility for Scanco Multi-Bin Version 2020.0.
Refer to [Page 08](#) for information on how to install Scanco Multi-Bin.
- ❑ If hot fixes are available on the Scanco Multi-Bin Downloads page for Mobility for Scanco Multi-Bin Version 2020.0, download and install the hot fixes.
Refer to [Page 12](#) for information on how to install Hot Fixes.
- ❑ Allow administrator access to new screen options by defining role security from Library Master > Main > Role Maintenance.
- ❑ Activate the required and optional Sage 100 modules, including the Barcode module from Library Master Main menu > Company Information.
- ❑ Create data files for Mobility for Barcode by accessing the Mobility for Bar Code > Setup > Mobility for Bar Code Options.

Upgrading Sage 100, Scanco Multi-Bin, and Mobility for Scanco Multi-Bin

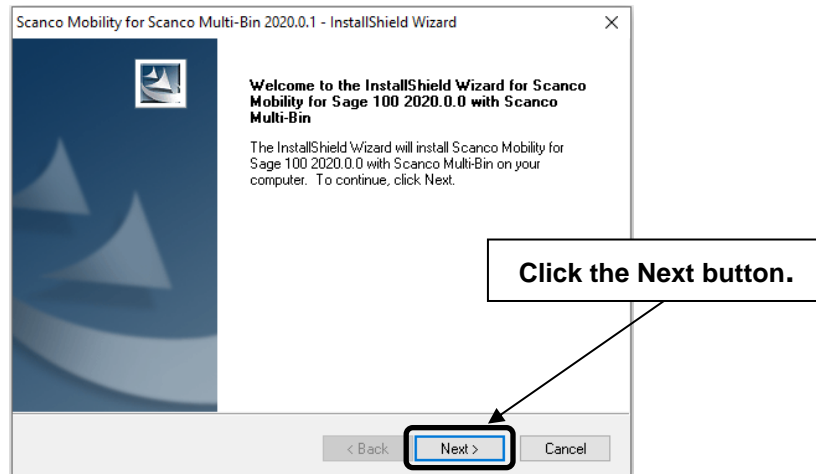
- ❑ Complete the Mobility for Scanco Multi-Bin pre-installation checklist.
- ❑ Install Sage 100 2020.
Refer to the Sage 100 2020 Customer Upgrade Guide and the Sage 100 2020 Upgrade Checklist.
- ❑ Run the Sage 100 workstation setup process on all applicable workstations.
Refer to the Sage 100 2020 Installation and System Administrator's Guide.
- ❑ Refer to the Scanco Multi-Bin Version 2020.0 Installation Guide for the full upgrade instructions.
 Scanco Multi-Bin has separate upgrade paths for 2019, and 2018 and earlier versions. Please follows those instructions closely before proceeding with the Mobility for Scanco Multi-Bin Installation.
- ❑ Install Mobility for Scanco Multi-Bin.
Refer to [Page 08](#) for information on how to install Scanco Multi-Bin
- ❑ If hot fixes are available on the Scanco Multi-Bin Downloads page for Mobility for Scanco Multi-Bin Version 2020.0, download and install the hot fixes.
Refer to [Page 12](#) for information on how to install Hot Fixes.
- ❑ Allow administrator access to new screen options by defining role security from Library Master > Main > Role Maintenance.
- ❑ Access Mobility for Barcode > Setup > Mobility Data File Conversions. Select the Proceed button from the task window to convert Mobility for Scanco Multi-Bin data files.

Installing Mobility for Scanco Multi-Bin

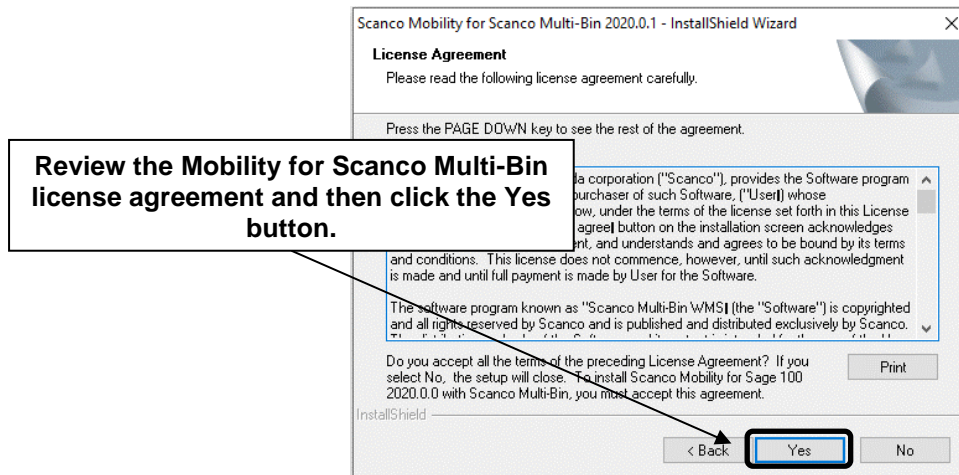
Conduct the following steps after Sage 100 2020 and Scanco Multi-Bin Version 2020.0 are installed successfully.

How to Install Mobility for Scanco Multi-Bin

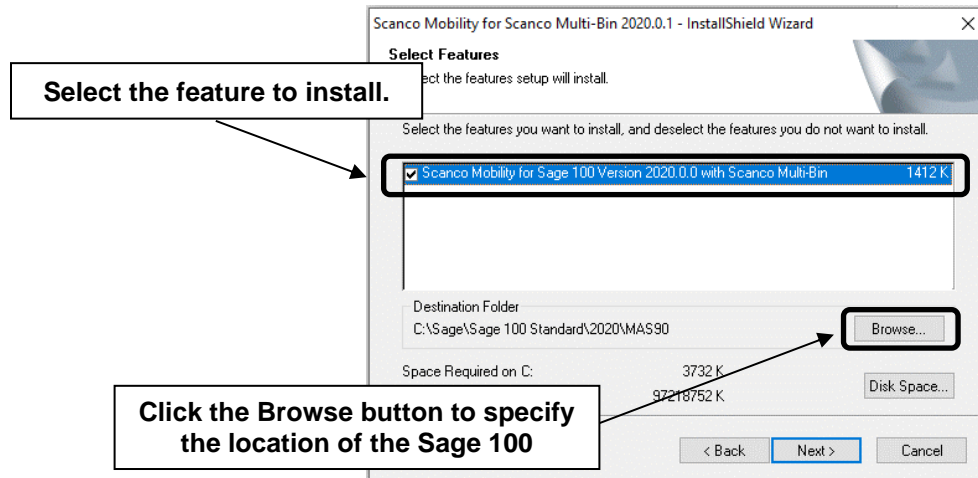
1. Download the BC62001_MB.exe file from the Scanco Multi-Bin Downloads page at <http://info.scanco.com/scanco-multibin-downloads>
2. Right click on the Mobility for Scanco Multi-Bin 6.2001 executable file.
3. Select Run as administrator.



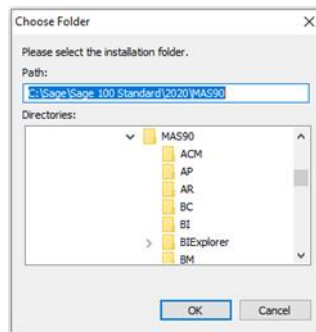
4. Select the Next button from the Mobility for Scanco Multi-Bin 2020.0.1 Welcome window.
5. Review the Mobility for Scanco Multi-Bin 2020.0.1 License Agreement.



6. Select the Yes button to agree to the Mobility for Scanco Multi-Bin License Agreement and to continue with the installation process.
7. Accept the default check box field setting for Mobility for Scanco Multi-Bin.



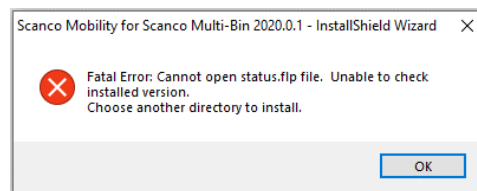
- Accept the default location of Sage 100 or select the Browse button to specify the location of Sage 100. The Choose Folder window displays after the Browse button is selected.



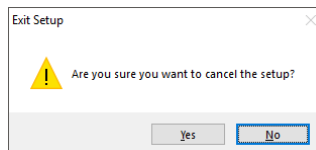
Specify the location of Sage 100 in the Path field. Select the OK button to return to the Select Features window.

- Select the Next button from the Select Features window. The installed versions of Sage 100 Standard, Sage 100 Advanced or Sage 100 Premium and Scanco Multi-Bin are validated.

When Sage 100 2020 version 6.20.0.1 has not been installed at the specified Sage 100 Standard, Sage 100 Advanced or Sage 100 Premium location, the following message displays.

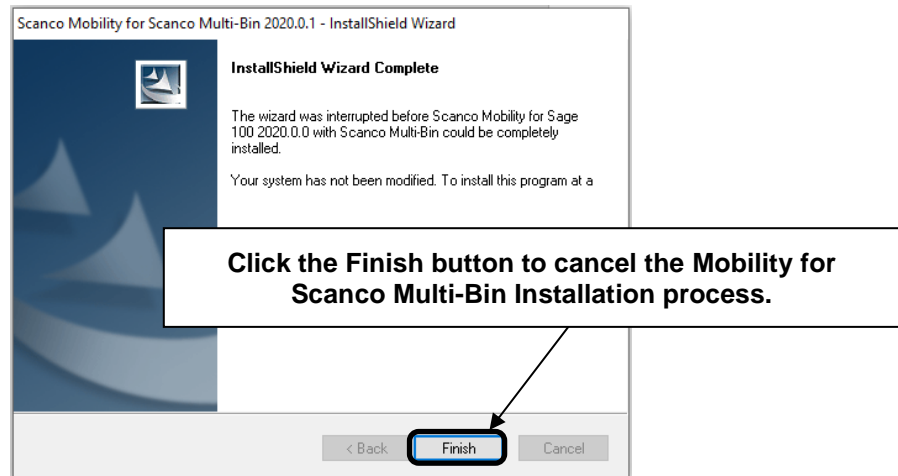


Select the OK button from the message. Select the Cancel button from the Select Features window. The following message displays.



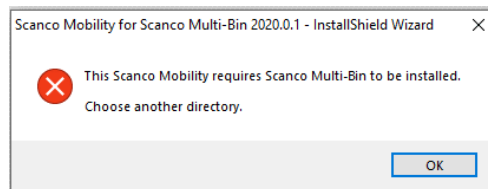
Select Yes in Exit Setup Message the message.

Select the Finish button from the InstallShield Wizard Complete window to cancel the Mobility for Scanco Multi-Bin 2020.0 installation process.



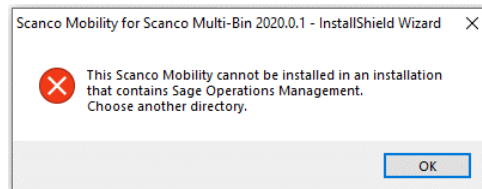
To resolve, install Sage 100 2020 and then install Scanco Multi-Bin 2020 6.2001.

Warning: When Scanco Multi-Bin Version 2020.0 is not installed in the selected location, the following message displays.



Select the OK button and modify the location to where Scanco Multi-Bin Version 2020.0 is installed or cancel the Mobility for Scanco Multi-Bin 2020.0.1 installation process and install Scanco Multi-Bin Version 2020.0.

Warning: When Sage Operations Management is installed in the selected location, the following message displays.



Select the OK button and modify the destination folder to where Scanco Multi-Bin 2020.0 is installed.

Unique installers are required for Scanco Multi-Bin and Mobility for Scanco Multi-Bin for Sage Operations Management and are available separately.

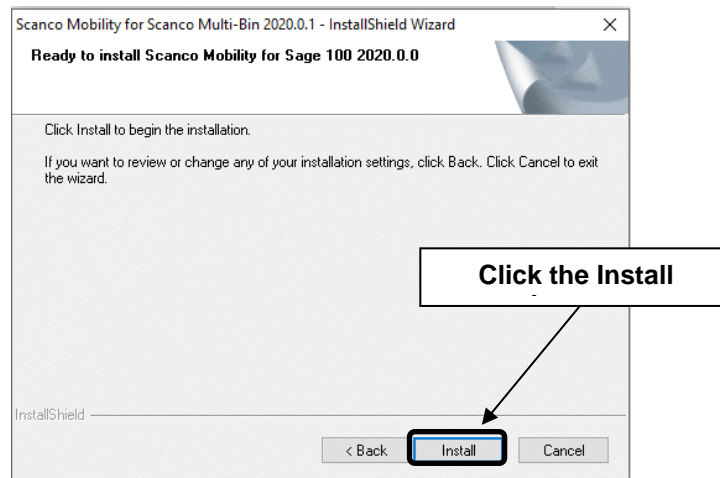
Warning: When Sage Production Management is installed in the selected location, a message will display.

Select the OK button and modify the destination folder to where Scanco Multi-Bin 2020.0 is installed. Scanco Multi-Bin 2020.0 and Mobility for Scanco Multi-Bin 2020.0 may not be installed in the same Sage 100 location containing Sage Production Management at this time.

Unique installers are required for Scanco Multi-Bin and Mobility for Scanco Multi-Bin for Sage Production Management will be made available at a later date.

Warning: Please note : Multi-Bin 6.2001 for Production Management 6.20.0.1.0 is not available as of this publication (06/2020).

10. Select the Install button from the following window to install Mobility for Scanco Multi-Bin Version 2020.0



Select the Back button to return to the Select Features window.

Select the Cancel button, select Yes in the message *Are you sure you want to cancel the setup?* and the Finish button from the InstallShield Wizard Complete window to cancel the Mobility for Sage Production Management 6.20.0.1.0 installation process.

11. Select the Finish button from the InstallShield Wizard Complete window to complete the Mobility for Scanco Multi-Bin 2020.0.1 installation process.




Mobility for Scanco Multi-Bin Hot Fixes


Occasionally hot fixes are required to be installed after installing Mobility for Scanco Multi-Bin. Access Mobility for Scanco Multi-Bin hot fixes from the Scanco Multi-Bin Downloads page <http://info.scanco.com/scanco-multibin-downloads>

How to Install Mobility for Sage Production Management Hot Fixes

1. Access the Scanco Multi-Bin Downloads page <http://info.scanco.com/scanco-multibin-downloads>
2. Click on the Mobility for Scanco Multi-Bin menu option.
3. Click on Hot Fixes.
4. Review the available hot fixes for Mobility for Scanco Multi-Bin for the currently installed version.

 **Note:** Hot fixes are version specific. Only install hot fixes for the current Mobility for Scanco Multi-Bin version. Do not install Hot fixes for Mobility for Sage Production Management or Mobility for Sage Operations Management. Do not install Hot fixes for a Version of Sage 100 other than 2020.0

5. Click on a hot fix link to download the hot fix file.
6. Specify the location to download the hot fix.
7. Extract the hot fix file to the MAS90 directory where Sage 100 and Mobility for Sage Production Management are installed.

 **Warning:** If the hot fix zip file is extracted to a location other than the MAS90 directory, the hot fix programs must be copied to the file location specified in the hot fix zip file.

Select to replace the files in the destination if the hot fix file was extracted to the MAS90 directory where Sage 100, Scanco Multi-Bin, and Mobility for Scanco Multi-Bin are installed. The hot fix program is now located in the correct directory in the Sage 100 installation.

Review the document(s) included in the hot fix download file, if applicable. Descriptions and instructions are included in this documentation.

The example pictured below is for Version 2019.

