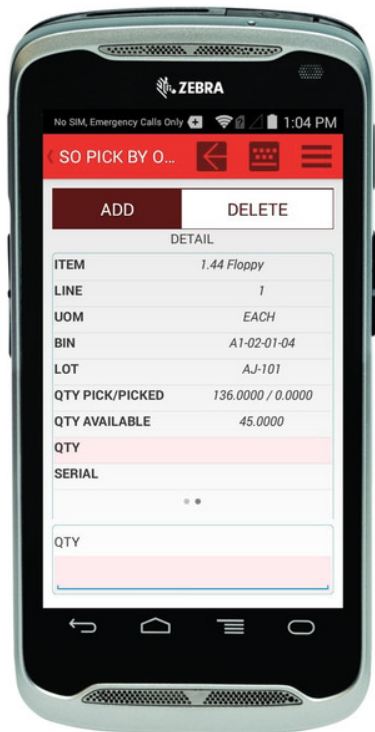




Streamline order picking, cycle counts, transfers, and more with Scanco Warehouse Automation for Sage 500

Scanco Warehouse for Sage 500 is a significant leap forward in automating your warehouse operations.

Scanco's Warehouse for Sage 500 ERP provides you with a wireless solution to streamline order picking, cycle counts, transfers, and more for your warehouse personnel, instantly feeding information back to your Sage 500 ERP system with proper validation. Your data collection is timely and more accurate when your warehouse employees can record their activities using devices already in their pocket.



SIMPLIFY RECEIPTS, RETURNS, AND TRANSFERS

Achieving effective warehouse management requires accuracy and an efficient automated process to stay competitive. Scanco's Warehouse 500 supports the precision movement of goods from your vendors to your customers, and between your warehouses.

RECEIPTS

Warehouse 500 simplifies many processes through the use of handheld scanners that link to your integrated Sage 500 ERP system. When goods arrive, and you complete a PO Receipt on the handheld, an option can prompt you to print barcode labels for the new items using a desktop or portable belt printer. Receipts of goods can either use batch posting or simulated real-time posting, depending on the needs of your business.

RETURNS

Similar to the receipt process is the real-time ability to receive and monitor customer merchandise returns. Just match the RMA (Return Merchandise Authorization) numbers, and you're on the move.

WAREHOUSE TRANSFERS

If your company has more than one warehouse, centralizing the availability of your inventory is a smart way to optimize cash flow and maximize purchasing power. Perform a simple three-step warehouse transfer process with the handheld, and you can move materials to another location. Like receipts of goods, warehouse transfers can be batch posted or posted in real time.



BIN TRANSFERS

The ability to quickly and easily record bin transfers is another key benefit of Warehouse 500. Mobility is where warehouse management takes an automated form. Warehouse managers that understand the importance of efficiently separating stock into deep storage bins vs. forward-pick bins will appreciate how easy real-time posting is using handheld devices.

SHORTEN YOUR PICK, PACK, AND SHIP PROCESS

Handheld devices provide you with a fluid process to perform the picking task for one or several orders with the flexibility to pick by sales order number or shipment number to quickly fulfill urgent orders. When the selected order appears on the handheld, the system displays all items that are to be picked—sequentially or one at a time—directing the picker to the appropriate bin for each item. Several flexible picking options are supported using handheld devices:

- **Pick by Pick List**—pick all items in the pick list, including multiple orders and multiple shipments.
- **Pick by Order**—for quickly processing urgent orders. You have the option to pick items for a single order and a single shipment.
- **Pick by Shipment**—if the shipment is already generated in Sage 500 ERP, you immediately have the option to pick items for multiple orders in a single shipment, and commit the shipment from the handheld. At the end of your picking process, all completed pick items will be sorted according to common customer Ship-To - Addresses, Shipment Dates, and Shipping Methods simplifying the packing process using the handheld device. Pack up all your items into a single package, or select the next box indicator to break the shipment into multiple packages. You also gain the ability to divide the contents of one sales order line into two or more packages. E-mails are automatically sent to the back office once specific events are completed from the handheld, including completion of a pick list pick, sales order pick, shipment pick, and posting of a sales order. Mobility ensures that critical back-office personnel involved within shipment workflow are informed so that subsequent action will be taken. Warehouse managers can optionally require handheld personnel to scan items and enter the customer number when picking or packing orders. Mobility allows rapid processing of rush orders for a single customer.

Shipping information flows directly to Sage 500 ERP and you can see it when you access the Edit Shipments task from the desktop. From there, you'll be able to view shipping transactions and send appropriate Shipments to StarShip if desired.



WIRELESS DATA COLLECTION

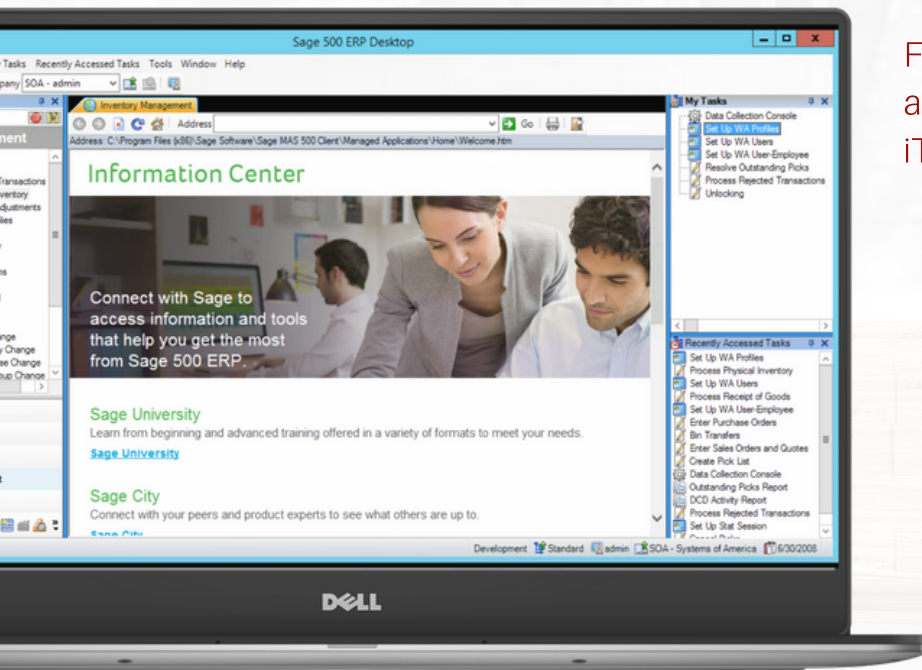
- Extend Sage 500 ERP Warehouse Management and Inventory Management to Employees on the Warehouse Floor
- Improve Picking, Packing, and Shipping Efficiencies
- Real-Time Back Office Updates
- Use Standard Bar Code Labels or Design and Print Your Own
- Take Full Advantage of Security in Sage 500 ERP

MAKE INVENTORY RECONCILIATION REALLY WORK FOR YOU

Do you experience significant write-offs when you take your annual or semi-annual physical inventory? Most of the time, it's a mystery as to how transactions contributed to these inaccuracies or why they occurred. Worst of all, by the time you find the discrepancies, it's too late to make adjustments to get your profitability goals back on track. You may have considered the technique of cycle counting to address this issue in a timelier manner, but the execution of manual cycle counting seems impractical due to the time it takes. Warehouse Automation for Sage 500 ERP enables you to get control of inventory reconciliation swiftly and accurately by supporting both your full physical count or cycle count events.

CONTINUE TO WORK DURING RF DISCONNECTIONS

With Warehouse Automation, handheld processing continues during unintentional disconnections from radio frequency communication. If you walk out of RF range or if the RF network goes down, you can carry on your critical, time-sensitive warehouse activities. And, after reestablishing RF communication, run the Synchronizer that validates the handheld data and sends it to Sage 500 ERP. Any data that fails validation goes to a separate table viewable from a desktop, edited, and re-sent to the appropriate tables within Sage 500 ERP. You can even take advantage of planned disconnected processing by running the Synchronizer in advance of performing activities out of RF range, such as taking a physical count at non-RF-enabled warehouses or stockyards. After the disconnected activities are complete, just rerun the Synchronizer to complete the process.



For the first time, Sage 500 users can automate inventory with an app from iTunes or Google Play Store.



About Scanco

Since 1989, Scanco has been a leading provider of supply chain automation software and services. Since our inception, we have focused on innovative warehouse management solutions with a unique technology-driven approach. Our solutions deliver unequalled efficiency and visibility for distribution and manufacturing companies around the globe.

From basic barcoding to the most complex distribution and manufacturing operations- Scanco software is positioned to grow with our customers ever-changing business needs. We are focused on providing top-tier, fully integrated automation solutions built specifically for your ERP solution. Today, thousands of world-class distribution and manufacturing companies have automated their facilities with cutting-edge Scanco technology.

To learn more about our Sage solutions or to schedule a live product demonstration contact us at sales@scanco.com