



sage Production  
Management

# Sage Inventory Requirements Planning 2019.4

## Installation Guide

Version 6.10.4.0.0

December 2020

*© Copyright 2020 All rights reserved. JobOps is a trademark of Scanco Software, LLC. Sage, the Sage logos, and the Sage product and service names mentioned herein are registered trademarks or trademarks of Sage Software, Inc., or its affiliated entities. All other trademarks are the property of their respective owners. The contents herein are summary in nature and subject to change without notification from Scanco Software, LLC. Scanco Software, LLC, accepts no responsibility for inadvertent errors or omissions.*

Scanco Software, LLC  
1000 N Tamiami Trail  
Suite 201  
Nokomis, FL 34275

# Contents

## Chapter 1 – 5

Introduction to Inventory Requirements Planning 5

About this Guide 5

Important Information 5

Registration Key Requests 5

Parallel Test Environment 5

Module Integration 5

Component Exception Manager vs. Inventory Requirements Planning 5

Non-Scanco Third Party Products 6

Supporting Documentation 6

Required Sage 100 Modules 6

## Chapter 2 – 7

Sage Inventory Requirements Planning Pre-Installation Checklist 7

## Chapter 3 – 9

Sage Inventory Requirements Planning 6.10.4.0.0 Installation Checklists 9

Sage Inventory Requirements Planning without Production Management 9

Sage Inventory Requirements Planning with Production Management 10

## Chapter 4 – 12

Installing Sage Inventory Requirements Planning 12

How to Install Sage Inventory Requirements Planning 12

## Chapter 5 – 16

Activating Sage Inventory Requirements Planning 16

How to Activate Sage Inventory Requirements Planning 16

Setting Up Sage Inventory Requirements Planning Required Modules 16

## Chapter 6 – 18

Sage Inventory Requirements Planning Registration 18

How to Register Sage Inventory Requirements Planning 19

## Chapter 7 – 21

Sage Inventory Requirements Planning Hot Fixes 21

How to Install Sage Inventory Requirements Planning Hot Fixes 21

## Chapter 8 – 23

Sage Inventory Requirements Planning and Scanco Multi-Bin and Enhancement Modules 23

## Chapter 9 – 24

About Inventory Requirements Planning 24

# Chapter 1

## Introduction to Inventory Requirements Planning

### About this Guide

This guide provides the information necessary for installing Sage Inventory Requirements Planning.

### Important Information


Read this guide completely before installing Sage Inventory Requirements Planning 6.10.4.0.0. The Sage Inventory Requirements Planning 6.10.4.0.0 installation includes Sage Inventory Requirements Planning and Sage 100 Standard, Advanced or Premium modified programs. Before installing Sage Inventory Requirements Planning 6.10.4.0.0, install and register Sage 100 Standard, Sage 100 Advanced or Sage 100 Premium 2019 with Product Update 4.

Please refer to the Sage 100 Installation and System Administrator's Guide for information on installing Sage 100 Standard, Sage 100 Advanced or Sage 100 Premium and Sage 100 2019 Product Update 4.

### Registration Key Requests

Registration key requests are fulfilled in 1-3 business days. When conducting an upgrade or a new installation, please plan according and only conduct an installation once registration keys are received. Sage Inventory Requirements Planning keys are requested from [www.scanco.com/prod-mgmt-downloads](http://www.scanco.com/prod-mgmt-downloads).

### Parallel Test Environment

 **Warning:** Install Sage Inventory Requirements Planning 6.10.4.0.0 into a parallel test Sage 100 environment.

Performing a test upgrade or a test new install allows you to resolve issues that may occur during the live upgrade or live new install, reducing downtime and allows you to determine a rough estimate of how long the upgrade process will take. Refer to the [Sage Knowledgebase article ID 101266](#) for more information. Note that third party products must be re-installed after a migration, which also includes Sage Inventory Requirements Planning. Refer to the **Error! Reference source not found.** on page **Error! Bookmark not defined.** for more information.

### Module Integration

Sage Inventory Requirements Planning 6.10.4.0.0 may be integrated with the Sales Order, Purchase Order, and Production Management modules when these modules are activated and set up. Integration is specified from Inventory Requirements Planning Setup menu > Inventory Requirements Planning Options.


Sage Inventory Requirements Planning 6.10.4.0.0 is not integrated with but may be installed in Sage 100 when Scanco Multi-Bin 6.10290, Scanco Multi-Bin 6.10290 for Sage Production Management 6.10.4.0.0 Scanco Manufacturing Automation, Scanco In Transit, Scanco Scheduled Bill of Materials and/or Scanco Advanced Landed Cost.

Sage Inventory Requirements Planning 6.10.4.0.0 does not integrated with and cannot be installed in Sage 100 with Sage Operations Management.

### Component Exception Manager vs. Inventory Requirements Planning

The Sage Inventory Requirements Planning module is only compatible when the Sage Production Management module is installed in Sage 100 or Sage Production Management and Sage Operations Management are not installed in Sage 100. Use the Component Exception Manager when JobOps/Sage 100cloud Manufacturing/Sage Operations Management is installed.

## Non-Scanco Third Party Products

 **Warning:** Sage Inventory Requirements Planning 6.10.4.0.0 may not be compatible with non-Scanco third party products.

If third-party products that integrate with Sage 100 are used, check with the vendor of the third-party product to ensure that the third-party product is fully compatible with this release. If other Sage products are integrated, check with your business partner or Sage to ensure that these components are compatible.

## Supporting Documentation

Review the Sage Inventory Requirements Planning Release Notes prior to installing Sage Inventory Requirements Planning. Sage Inventory Requirements Planning documents are available from the Downloads page of the Sage Production Management Downloads webpage [www.scanco.com/prod-mgmt-downloads](http://www.scanco.com/prod-mgmt-downloads).

Refer to the Sage 100 Installation and System Administrator's Guide for information on installing Sage 100 Standard, Sage 100 Advanced or Sage 100 Premium and Sage 100 2019.

 **Note:** Please contact your authorized Sage partner or the Sage Support department at 866-996-7243 or <https://customers.sagenorthamerica.com> for assistance.

## Required Sage 100 Modules

The following Sage 100 modules are required to be installed and activated to use Sage Inventory Requirements Planning.

- Library Master,
- Common Information,
- Inventory Management, and
- Purchase Order, or
- Production Management

# Chapter 2

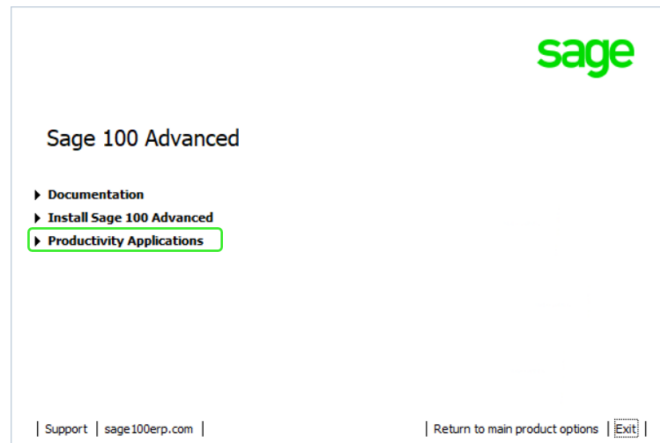
## Sage Inventory Requirements Planning Pre-Installation Checklist

Complete the following pre-installation checklist prior to installing Sage Inventory Requirements Planning 6.10.4.0.0 to ensure a successful installation.

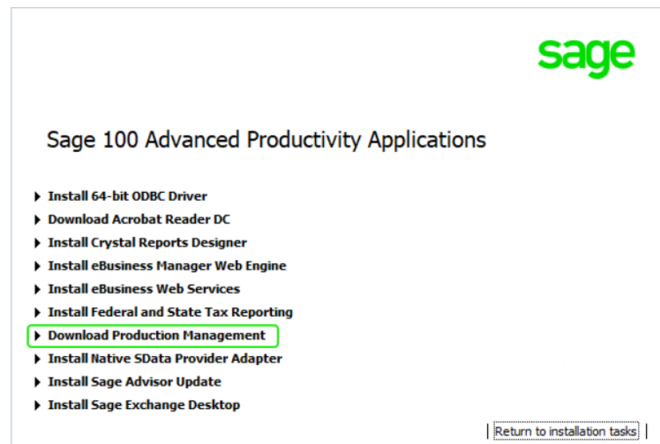
- ❑ Do not install Sage Inventory Requirements Planning 6.10.4.0.0 when custom modifications exist on Sage modified modules. Custom modifications must be retrofitted to the current Sage 100 version. Please contact your Sage or Sage Inventory Requirements Planning partner for information on how to obtain a quote for custom modifications to be retrofitted to Sage 100 2019 with Sage Inventory Requirements Planning 6.10.4.0.0.
- ❑ Do not install Sage Inventory Requirements Planning 6.10.4.0.0 when extended solutions or third-party products are installed on the Sage 100 system. Please contact your Sage Inventory Requirements Planning partner or the Sage Support department at 866-996-7243 or <https://customers.sagenorthamerica.com> for information on evaluating extended solutions or third-party software.
- ❑ Confirm that the Sage 100 installed version is 6.10.4.0 for the Sage 100 Standard, Sage 100 Advanced or Sage 100 Premium system. Access Help menu > About Sage to review the currently installed Sage 100 version. To review additional information on the currently installed Sage 100 system in the Sage 100 System Information window, select File menu > Run. Type \*info in the Program field. Select the OK button.
  - ⚠ **Warning:** Install Sage Inventory Requirements Planning 6.10.4.0.0 into a parallel test Sage 100 environment. Performing a test upgrade or a test new install allows you to resolve issues that may occur during the live upgrade or live new install, reducing downtime and allows you to get a rough estimate of how long the upgrade process will take. Refer to the [Sage Knowledgebase article ID 101266](#) for more information. As not noted in the Sage Knowledgebase article before step 20, third party products must be re-installed after a migration.
- ❑ Backup the entire Sage 100 Standard, Sage 100 Advanced or Sage 100 Premium system, including programs and data files, after all data entry files are updated, and before installing Sage Inventory Requirements Planning 6.10.4.0.0.
- ❑ Download the Sage Inventory Requirements Planning 6.10.4.0.0 installation file, documentation and registration information from <http://info.scanco.com/prod-mgmt-downloads> The Sage Inventory Requirements Planning downloads page can be accessed from the Sage 100 2019 installation wizard.
  1. From the Sage 100 2019 installation Autorun screen, click a version of Sage 100.



2. From the Installation Tasks menu, click Productivity Applications.



3. Click Download Production Management to access the Sage Inventory Requirements Planning downloads page.





## Chapter 3

### Sage Inventory Requirements Planning 6.10.4.0.0 Installation Checklists

Complete one of the following installation checklists in the order to ensure a successful installation of Sage Inventory Requirements Planning 6.10.4.0.0.

- Sage Inventory Requirements Planning without Production Management Page 9
- Sage Inventory Requirements Planning with Production Management Page 10

#### Sage Inventory Requirements Planning without Production Management

- ❑ Complete the Sage Inventory Requirements Planning 6.10.4.0.0 pre-installation checklist.
- ❑ Install Sage 100 2019. Refer to the Sage 100 2019 Installation and System Administrator's Guide.
  - ⚠ **Warning:** Install Sage Inventory Requirements Planning 6.10.4.0.0 into a parallel test Sage 100 environment. Performing a test upgrade or a test new install allows you to resolve issues that may occur during the live upgrade or live new install, reducing downtime and allows you to get a rough estimate of how long the upgrade process will take. Refer to the [Sage Knowledgebase article ID 101266](#) for more information. As not noted in the Sage Knowledgebase article before step 20, third party products must be re-installed after a migration.
- ❑ Install Product Update 4 for Sage 100 2019.
- ❑ Run the Sage 100 workstation setup process on all applicable workstations. Refer to the Sage 100 2019 Installation and System Administrator's Guide.
- ❑ Install Sage Inventory Requirements Planning 6.10.4.0.0. Refer to Installing Sage Inventory Requirements Planning on page 12.
- ❑ If hot fixes are available on the Sage Production Management Downloads page for Sage Inventory Requirements Planning version 6.10.4.0.0, install Sage Inventory Requirements Planning 6.10.4.0.0 hot fixes. Refer to How to Install Sage Inventory Requirements Planning Hot Fixes on page 21
  - 🔗 **Note:** Sage Inventory Requirements Planning 6.10.4.0.0 may be installed before or after installing Scanco Multi-Bin 6.10290.
- ❑ Activate the required and optional Sage 100 modules and the Sage Inventory Requirements Planning module from Library Master Main menu > Company Information. Refer to Activating Sage Inventory Requirements Planning on page 16.
- ❑ Create and set up company data files for required and optional Sage 100 modules that integrate with Sage Inventory Requirements Planning. Refer to Setting Up Sage Inventory Requirements Planning Required Modules on page 16.
- ❑ Run the data conversion process from Library Master Main menu > Company Information.
- ❑ Define role security for Sage Inventory Requirements Planning from Library Master Main > Role Maintenance.
- ❑ Register Sage Inventory Requirements Planning 6.10.4.0.0 from Library Master Setup > Scanco Product Registration. Refer to How to Register Sage Inventory Requirements Planning on page 19.
- ❑ Verify the Sage 100 and Sage Inventory Requirements Planning versions by accessing Inventory Setup > About Inventory Requirements Planning. Refer to About Inventory Requirements Planning on page 24

## Sage Inventory Requirements Planning with Production Management

- ❑ Complete the Sage Inventory Requirements Planning 6.10.4.0.0 pre-installation checklist.
- ❑ Install Sage 100 2019. Refer to the Sage 100 2019 Installation and System Administrator's Guide.
  - ⚠ **Warning:** Install Sage Inventory Requirements Planning 6.10.4.0.0 into a parallel test Sage 100 environment. Performing a test upgrade or a test new install allows you to resolve issues that may occur during the live upgrade or live new install, reducing downtime and allows you to get a rough estimate of how long the upgrade process will take. Refer to the [Sage Knowledgebase article ID 101266](#) for more information. As not noted in the Sage Knowledgebase article before step 20, third party products must be re-installed after a migration.
- ❑ Install Sage 100 2019 Product Update 4. Refer to the Sage 100 2019 Customer Upgrade Guide and the Sage 100 2019 Upgrade Checklist.
- ❑ Run the Sage 100 workstation setup process on all applicable workstations. Refer to the Sage 100 2019 Installation and System Administrator's Guide.
- ❑ Migrate and convert Sage 100 data to 2019 version 6.10.4.0. Refer to the Sage 100 2019 Installation and System Administrator's Guide.
- ❑ Install Sage Production Management 6.10.4.0.0. Refer to the installation check lists in the Sage Production Management Installation guide.
- ❑ If hot fixes are available on the Sage Production Management Downloads page for Sage Production Management version 6.10.4.0.0, install Sage Production Management 6.10.4.0.0 hot fixes. Refer to the Sage Production Management Installation guide.
- ❑ Install Sage Inventory Requirements Planning 6.10.4.0.0. Refer to Installing Sage Inventory Requirements Planning on page 12.
  - 🔗 **Note:** Sage Inventory Requirements Planning 6.10.4.0.0 may be installed before or after installing Sage Production Management 6.10.4.0.0 and Scanco Multi-Bin 6.10290 for Sage Production Management 6.10.4.0.0.
- ❑ If hot fixes are available on the Sage Production Management Downloads page for Sage Inventory Requirements Planning version 6.10.4.0.0, install Sage Inventory Requirements Planning 6.10.4.0.0 hot fixes. Refer to How to Install Sage Inventory Requirements Planning Hot Fixes on page 21.
- ❑ Back up all company data files before conducting the company conversion process.
- ❑ Activate the required and optional Sage 100 modules, if not already activated, and the Sage Inventory Requirements Planning module from Library Master Main menu > Company Information. Refer to Activating Sage Inventory Requirements Planning on page 16**Error! Bookmark not defined..**
- ❑ Create and set up company data files for required and optional Sage 100 modules that integrate with Sage Inventory Requirements Planning. Refer to Setting Up Sage Inventory Requirements Planning Required Modules on page 16**Error! Bookmark not defined..**
- ❑ Run the data conversion process from Library Master Main menu > Company Information.
- ❑ Define role security for Sage Inventory Requirements Planning from Library Master Main > Role Maintenance.
- ❑ Register Sage Inventory Requirements Planning 6.10.4.0.0 from Library Master Setup > Scanco Product Registration. Refer to How to Register Sage Inventory Requirements Planning on page 19.
- ❑ Verify the Sage 100 and Sage Inventory Requirements Planning versions by accessing Inventory Requirements Planning Setup > About Inventory Requirements Planning. Refer to About Inventory Requirements Planning on page 24.

- ❑ Access the Custom Office Utilities Menu and run the update customized panels by selecting Custom Office Utilities menu >Update Customized Panels to Current Level. Review the placement of all user-defined fields. Refer to the Sage 100 2019 Customer Upgrade Guide and the Sage 100 2019 Upgrade Checklist.
- ❑ Reset all grids.
- ❑ Set up Inventory Requirements Planning options. Access the setup wizard from Inventory Requirements Planning > Setup > Inventory Requirements Planning Options.

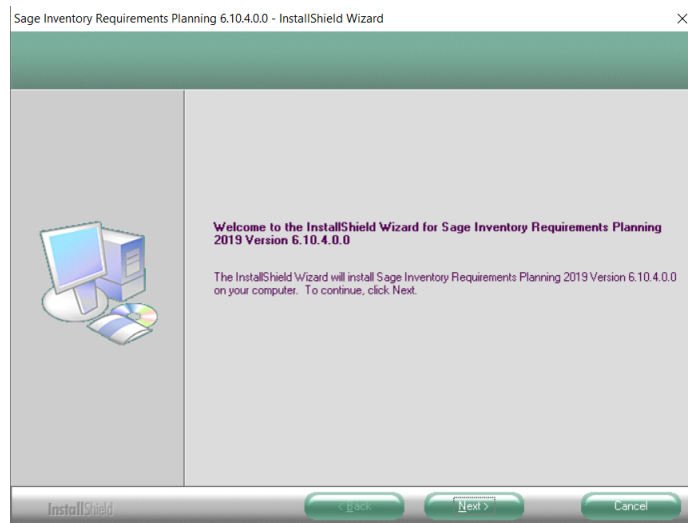
# Chapter 4

## Installing Sage Inventory Requirements Planning

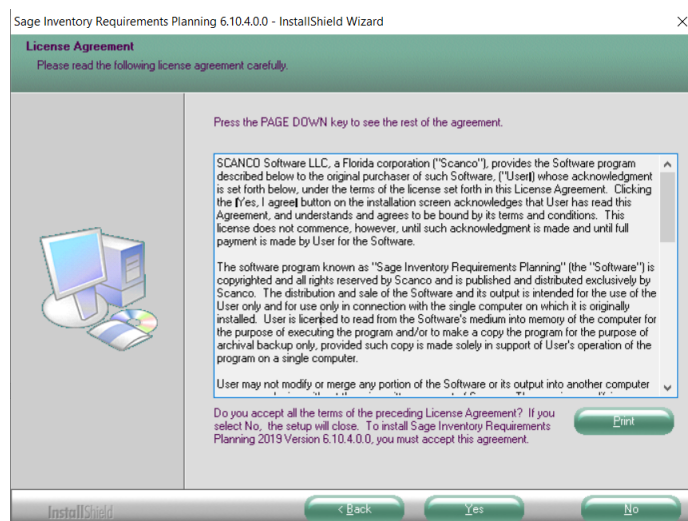
Conduct the following steps after Sage 100 2019 and Product Update 4 are installed successfully.

### How to Install Sage Inventory Requirements Planning

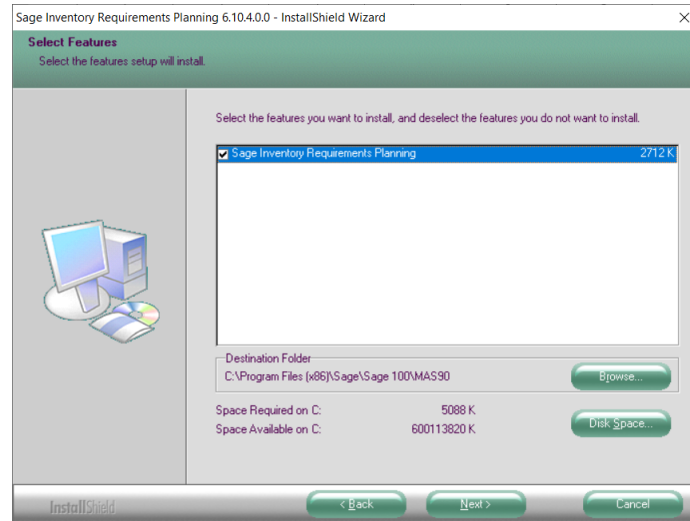
1. Download the IRP\_2019\_4\_0.exe file from the Downloads page on the Sage Production Management Downloads website at [www.scanco.com/prod-mgmt-downloads](http://www.scanco.com/prod-mgmt-downloads).
2. Right click on the Sage Inventory Requirements Planning 6.10.4.0.0 executable file.
3. Select Run as administrator.
4. Select the Next button from the Sage Inventory Requirements Planning Welcome window.



5. Review the Sage Inventory Requirements Planning License Agreement.

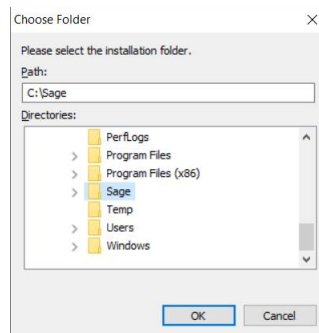


6. Select the Yes button to agree to the Sage Inventory Requirements Planning License Agreement and to continue with the Sage Inventory Requirements Planning 6.10.4.0.0 installation process.
7. Select the Sage Inventory Requirements Planning check box to install Sage Inventory Requirements Planning 6.10.4.0.0.



8. Accept the default location of Sage 100 or select the Browse button to specify the location of Sage 100.

The Choose Folder window displays after the Browse button is selected.

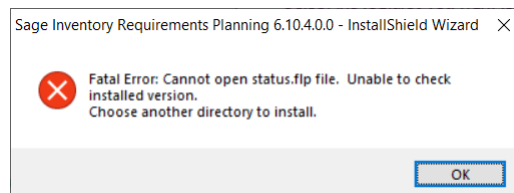


Specify the location of Sage 100 in the Path field. Select the OK button to return to the Select Features window.

9. Select the Next button from the Select Features window. The installed version of Sage 100 Standard, Sage 100 Advanced or Sage 100 Premium is validated.

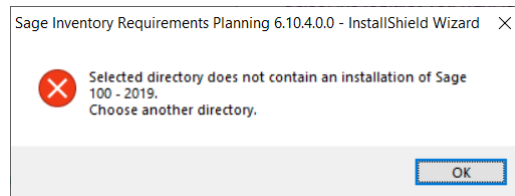


**Warning:** Sage Inventory Requirements Planning 6.10.4.0.0 must be installed to the same location where Sage 100 Standard, Sage 100 Advanced or Sage 100 Premium is installed. When an invalid directory location is entered in the Destination Folder field found on the Select Features window, the following message displays.

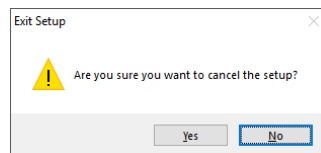


Select the OK button and modify the location where Sage 100 Standard, Sage 100 Advanced or Sage 100 Premium is installed.

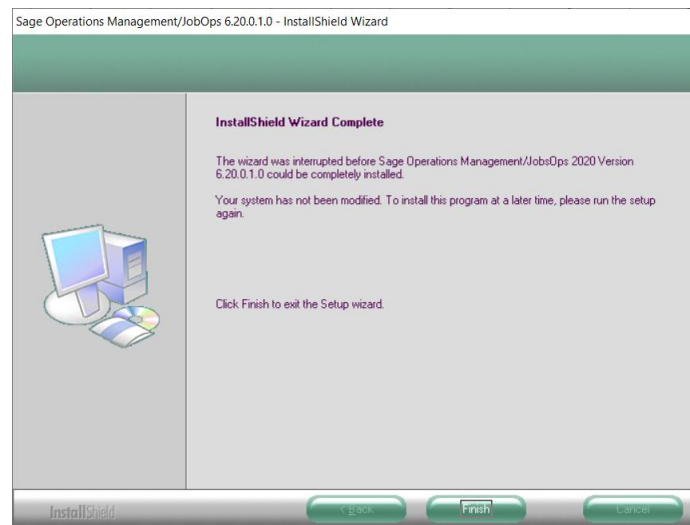
**Warning:** When Sage 100 is installed but is not version 6.10.4.0, the following message displays.



Select OK and cancel the Sage Inventory Requirements Planning 6.10.4.0.0 installation process. Select the Cancel button from the Select Features window. The following message displays.

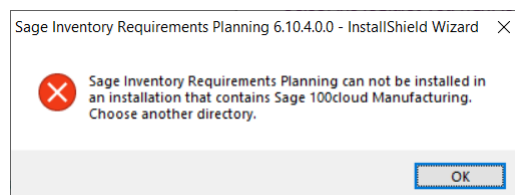


Select Yes in the message. Select the Finish button from the InstallShield Wizard Complete window to cancel the Inventory Requirements Planning 6.10.4.0.0 installation process.



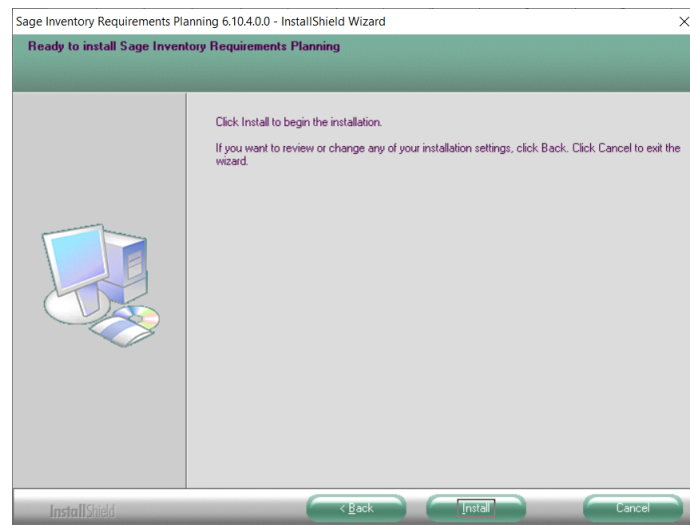
Install Sage 100 2019 version 6.10.4.0 and then install Sage Inventory Requirements Planning 6.10.4.0.0

**Warning:** Sage Inventory Requirements Planning 6.10.4.0.0 may not be installed in the same location where Sage Operations Management is installed. The following message displays when the selected location contains Sage Operations Management.



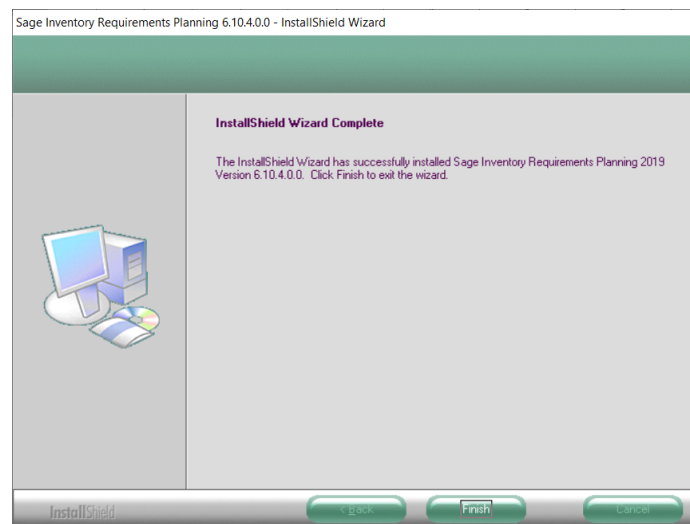
Select the OK button and then Cancel from the Select Features window.

10. Select the Install button from the following window to install Sage Inventory Requirements Planning 6.10.4.0.0.



Select the Back button to return to the Select Features window. Select the Cancel button, select Yes in the message *Are you sure you want to cancel the setup?* and the Finish button from the InstallShield Wizard Complete window to cancel the Sage Inventory Requirements Planning 6.10.4.0.0 installation process and return to the Sage Operations Management main menu.

11. Select the Finish button from the InstallShield Wizard Complete window to complete the Sage Inventory Requirements Planning 6.10.4.0.0 installation process.



## Chapter 5

### Activating Sage Inventory Requirements Planning

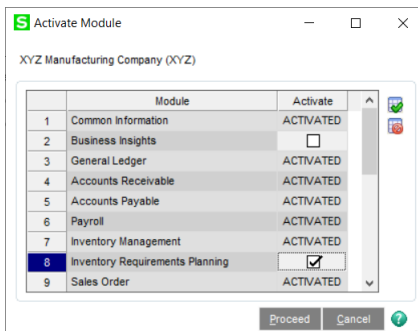
The Sage Inventory Requirements Planning module as well as the following required Sage 100 modules must be activated for all Sage 100 companies using the Sage Inventory Requirements Planning module.

- Library Master,
- Common Information,
- Inventory Management, and
- Purchase Order, or
- Production Management

Sage Inventory Requirements Planning is not required to be activated in a Sage 100 company that is not utilizing the Sage Inventory Requirements Planning module.

### How to Activate Sage Inventory Requirements Planning

1. Access Library Master Main menu > Company Maintenance.
2. Enter the appropriate company code in the Company Code field.
3. Select the Activate button.
4. Select the Inventory Requirements Planning Activate check box.



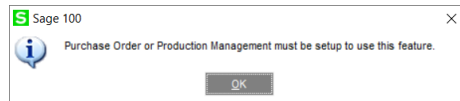
5. Select the Proceed button.

### Setting Up Sage Inventory Requirements Planning Required Modules

Company data files must be created prior to accessing Sage Inventory Requirements Planning tasks after Sage Inventory Requirements Planning is installed on an existing Sage 100 Standard, Sage 100 Advanced or Sage 100 Premium installation or after a new company has been created. Some Sage 100 modules are required to be installed to utilize Sage Inventory Requirements Planning. General Ledger, Common Information, and Inventory Management data files must be created prior to creating Sage Inventory Requirements Planning company data files. Purchase Order or Production Management data files must be created prior to creating Sage Inventory Requirements Planning company data files.

The following messages display when a Sage Inventory Requirements Planning task is accessed before company data files are created for the Sage 100 Purchase Order or Production Management module.





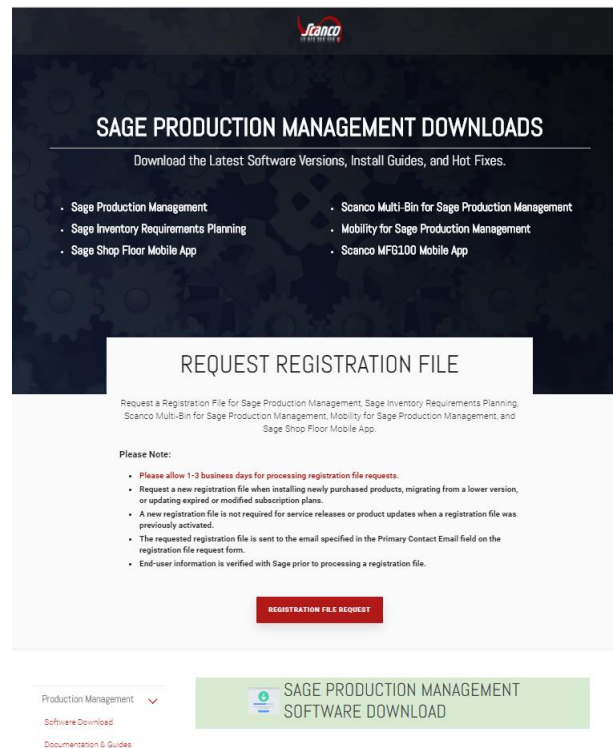
Click OK to the message. Access any Sage 100 Common Information or Inventory Management module task to access the Setup Wizard. Complete the Purchase Order or Production Management module setup process and then access Inventory Requirements Planning Options to set up Sage Inventory Requirements Planning.

## Chapter 6


### Sage Inventory Requirements Planning Registration

New Sage Inventory Requirements Planning registration keys are required when installing Sage Operations Management 6.20.0.1.0.

1. Access the Inventory Requirements Planning Downloads page <http://info.scanco.com/prod-mgmt-downloads>



2. Scroll down and click on Registration File Request button.

 **REGISTRATION FILE REQUEST FORM**

Please use the form below to request your Sage Production Management, Sage Inventory Requirements Planning, Scanco Multi-Bin for Sage Production Management, Mobility for Sage Production Management, and Sage Shop Floor Mobile App registration file.

**NOTE: If you are a reseller requesting a registration file for an end-user, please complete all fields with the end-user's information.**

---

COMPANY NAME\*

PHONE NUMBER

COMPANY CONTACT NAME\*

PRIMARY CONTACT EMAIL\*

☐ CHECK THE BOX IF YOU ARE A SAGE RESELLER  
 IF YOU ARE AN END-USER, ARE YOU WORKING WITH A SAGE RESELLER?  
☐ YES  
☐ NO  
 IF YES, WHAT IS THE NAME OF YOUR SAGE RESELLER?

WHICH MODULES DO YOU WISH TO REGISTER?


☐ SAGE PRODUCTION MANAGEMENT - MAKE TO STOCK  
☒ SAGE INVENTORY REQUIREMENTS PLANNING  
☐ MOBILITY FOR SAGE PRODUCTION MANAGEMENT  
☐ SAGE SHOP FLOOR USERS/DEVICES  
☐ DYNAMIC OFF  
☐ SCANCO MULTI-BIN FOR PRODUCTION MANAGEMENT

3. Enter the required information in the registration form. Fields noted with an asterisk (\*) are required.
4. Select the Sage Inventory Requirements Planning check box. Select the check boxes for Sage Inventory Requirements Planning, Scanco Multi-Bin for Production Management, Sage Shop Floor User/Devices, Mobility for Sage Production Management, and/or Dynamic Off when these modules have been purchased.

WHICH MODULES DO YOU WISH TO REGISTER?


☐ SAGE PRODUCTION MANAGEMENT - MAKE TO STOCK  
☒ SAGE INVENTORY REQUIREMENTS PLANNING  
☐ MOBILITY FOR SAGE PRODUCTION MANAGEMENT  
☐ SAGE SHOP FLOOR USERS/DEVICES  
☐ DYNAMIC OFF  
☐ SCANCO MULTI-BIN FOR PRODUCTION MANAGEMENT

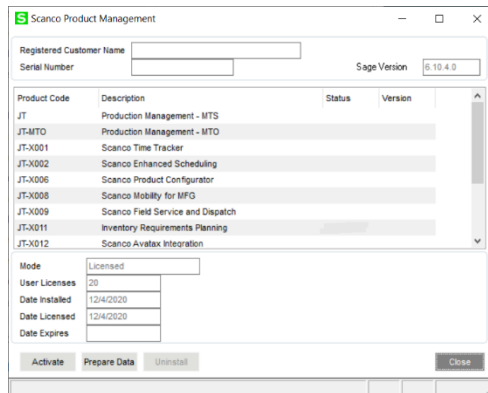
5. Select the Submit button.

 **Note:** Please allow 1-3 business days for processing Inventory Requirements Planning registration requests. The Inventory Requirements Planning registration file is sent to the email specified in the Primary Contact Email field on the Inventory Requirements Planning Registration form.

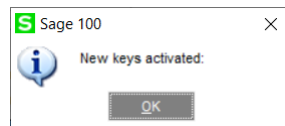
## How to Register Sage Inventory Requirements Planning

1. Access Library Master Setup menu > Scanco Product Registration.

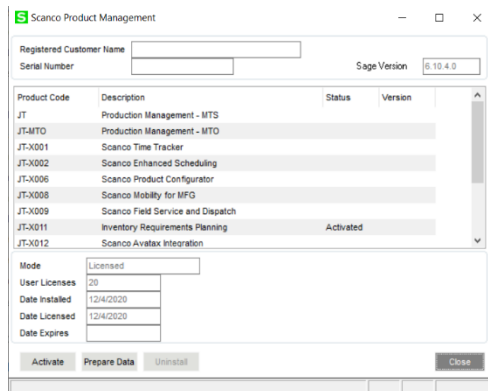
 **Note:** Registration information is obtained when Sage Inventory Requirements Planning is downloaded from the Sage Inventory Requirements Planning Downloads page.



2. Verify the correct Sage 100 Serial number and User Licenses displays.
3. Select the Activate button.
4. Select OK in the New keys activated. message.



5. Verify Activated displays in the Status field for the J/T-X011 Inventory Requirements Planning product code record.



6. Select the Close button.

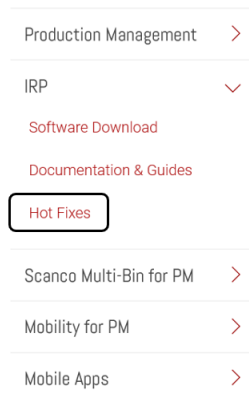
# Chapter 7

## Sage Inventory Requirements Planning Hot Fixes


Occasionally hot fixes are required to be installed after installing Sage Inventory Requirements Planning. Access Inventory Requirements Planning hot fixes from the Inventory Requirements Planning Downloads page <http://info.scanco.com/prod-mgmt-downloads>

### How to Install Sage Inventory Requirements Planning Hot Fixes

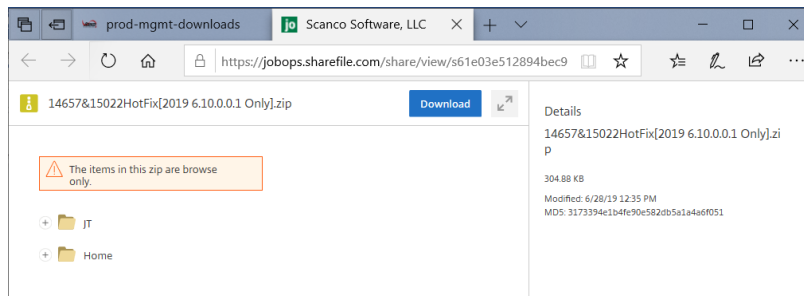
1. Access the Sage Production Management Downloads page <http://info.scanco.com/prod-mgmt-downloads>
2. Select the IRP menu.
3. Select Hot Fixes from the IRP menu.




4. Review the available hot fixes for Sage Inventory Requirements Planning for the currently installed version.

 **Note:** Hot fixes are version specific. Only install hot fixes for the current Scanco Inventory Requirements Planning version.

5. Click on a hot fix link to be directed to the download file.



6. Click on the Download button.
7. Specify the location to download the hot fix.
8. Extract the hot fix file to the MAS90 directory where Sage 100 and Inventory Requirements Planning are installed.

 **Warning:** If the hot fix zip file is extracted to a location other than the MAS90 directory, the hot fix program(s) must be copied to the file location specified in the hot fix zip file.

9. Select to replace the file(s) in the destination if the hot fix file was extracted to the MAS90 directory where Sage 100 and Inventory Requirements Planning are installed. The hot fix program(s) is now located in the correct directory in the Sage 100 and Inventory Requirements Planning installation.
10. Review the document included in the hot fix download file. Descriptions and instructions are included in this documentation.

# Chapter 8

## Sage Inventory Requirements Planning and Scanco Multi-Bin and Enhancement Modules

Sage Inventory Requirements Planning 6.10.4.0.0 is not integrated with but may be installed in Sage 100 when any of the following are installed

- Sage Production Management 6.10.4.0.0
- Scanco Multi-Bin 6.10290
- Scanco Multi-Bin 6.10290 for Sage Production Management 6.10.4.0.0
- Scanco Manufacturing Automation
- Scanco In Transit
- Scanco Scheduled Bill of Materials
- Scanco Advanced Landed Cost
- Material Requirements Planning

Allocation quantities, pre-allocation quantities and bin location/pallet ID quantities are not reviewed and do not display in Sage Inventory Requirements Planning when Scanco Multi-Bin 6.10290 or Scanco Multi-Bin 6.10290 for Sage Production Management 6.10.4.0.0 are installed with Sage Inventory Requirements Planning 6.10.4.0.0.

Scanco Manufacturing Automation, Scanco In Transit, Scanco Scheduled Bill of Materials and/or Scanco Advanced Landed Cost information is not reviewed and does not display in Sage Inventory Requirements Planning.

Sage Material Requirements Planning data is not reviewed and does not display in Sage Inventory Requirements Planning 6.10.4.0.0.

Sage Inventory Requirements Planning 6.10.4.0.0 may not be compatible with non-Scanco third party products. If you use third-party products that integrate with your Sage product, check with the vendor of your third-party product to ensure their product is fully compatible with this release. If you integrate with other Sage products, check with your business partner or Sage to ensure that these components are compatible.

Sage Inventory Requirements Planning 6.10.4.0.0 does not integrated with and cannot be installed in Sage 100 with Sage Operations Management.

## Chapter 9

### About Inventory Requirements Planning

Use the About Inventory Requirements Planning window to review the current Sage 100 and Inventory Requirements Planning version numbers. The information available in the About Inventory Requirements Planning window is also used when contacting Sage Support.

Access this window from Inventory Requirements Planning Setup menu > About Inventory Requirements Planning.



Select the OK button to close the About Inventory Requirements Planning window.