



sage Production  
Management

# Mobility for Scanco Multi-Bin for Sage Production Management 2019.4

## Installation Guide

Version 6.1041

December 2020

*© Copyright 2020 All rights reserved. Production Management is a trademark of Scanco Software, LLC. Sage, the Sage logos, and the Sage product and service names mentioned herein are registered trademarks or trademarks of Sage Software, Inc., or its affiliated entities. All other trademarks are the property of their respective owners. The contents herein are summary in nature and subject to change without notification from Scanco Software, LLC. Scanco Software, LLC, accepts no responsibility for inadvertent errors or omissions.*

Scanco Software, LLC  
1000 N Tamiami Trail  
Suite 201  
Nokomis, FL 34275

# Contents

## **Introduction to Mobility for Scanco Multi-Bin for Sage Production Management 4**

About this Guide 4

Important Information 4

## **Mobility for Scanco Multi-Bin for Production Management Pre-Installation Checklist 5**

## **Mobility for Scanco Multi-Bin for Sage Production Management Installation Checklists 7**

New Installation of Sage 100 with Mobility for Scanco Multi-Bin for Sage Production Management 7

Upgrading Sage 100 to 2019 with a New Installation of Production Management, Scanco Multi-Bin for Production Management, and Mobility for Scanco Multi-Bin for Production Management 8

Upgrading Sage 100 2019, Production Management and Mobility for Scanco Multi-Bin for Production Management 9

## **Installing Mobility for Scanco Multi-Bin for Sage Production Management 10**

How to Install Mobility for Scanco Multi-Bin for Sage Production Management 10

## **Activating Mobility for Scanco Multi-Bin for Sage Production Management 14**

## **Creating Company Data Files for Required Sage 100 Modules 14**

## **Registering Mobility for Scanco Multi-Bin for Sage Production Management 15**

How to Obtain Mobility for Scanco Multi-Bin for Sage Production Management Registration 15

How to Register Mobility for Scanco Multi-Bin for Sage Production Management 16

## **Mobility for Scanco Multi-Bin Production Management Hot Fixes 17**

How to Install Mobility for Scanco Multi-Bin for Sage Production Management Hot Fixes 17

# Introduction to Mobility for Scanco Multi-Bin for Sage Production Management

## About this Guide


This guide provides the information necessary for installing Mobility for Scanco Multi-Bin for Sage Production Management.


## Important Information


Read this guide completely before installing Mobility 6.1041 for Scanco Multi-Bin 6.1041 for Sage Production Management version 6.10.4.0.0. Before installing Mobility for Scanco Multi-Bin for Sage Production Management, install and register


- Sage 100 Standard, Sage 100 Advanced or Sage 100 Premium 2019 with Product Update 4,
- Sage Production Management 6.10.4.0.0, and
- Scanco Multi-Bin 6.1041 for Sage Production Management 6.10.4.0.0.

Please refer to the Sage 100 Installation and System Administrator's Guide for information on installing Sage 100 Standard, Sage 100 Advanced or Sage 100 Premium and Sage 100 2019 Product Update 4. Refer to the Sage Production Management 6.10.4.0.0 Installation Guide on installing Sage Production Management 6.10.4.0.0. Refer to the Scanco Multi-Bin 6.1041 for Production Management 6.10.4.0.0 Installation Guide on installing Scanco Multi-Bin 6.1041 for Production Management 6.10.4.0.0.

 **Warning:** Install Mobility 6.1041 for Scanco Multi-Bin for Sage Production Management into a parallel test Sage 100 environment. Performing a test upgrade or a test new install allows you to resolve issues that may occur during the live upgrade or live new install, reducing downtime and allows you to get a rough estimate of how long the upgrade process will take. Refer to the [Sage Knowledgebase article ID 101266](#) for more information. As not noted in the Sage Knowledgebase article before step 20, third party products must be re-installed after a migration.

 **Warning:** Mobility 6.1041 for Scanco Multi-Bin for Sage Production Management may not be compatible with non-Scanco third party products. If you use third-party products that integrate with your Sage product, check with the vendor of your third-party product to ensure their product is fully compatible with this release. If you integrate with other Sage products, check with your business partner or Sage to ensure that these components are compatible.

 **Warning:** When Scanco Multi-Bin for Sage Production Management is not installed in Sage 100 or was not purchased, refer to the Mobility for Sage Production Management installation guide. An installer that is specific for Scanco Multi-Bin for Sage Production Management must be used to install Mobility 6.1041 for Scanco Multi-Bin for Sage Production Management.

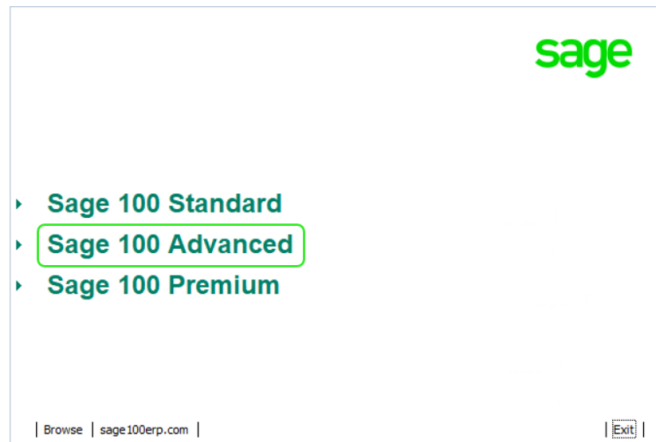
 **Note:** Please contact your authorized Sage Production Management partner or the Sage Support department at 866-996-7243 or <https://customers.sagenorthamerica.com> for assistance with Sage Production Management. Please contact Scanco Support at [support@scanco.com](mailto:support@scanco.com) for assistance with Mobility for Scanco Multi-Bin for Sage Production Management.

# Mobility for Scanco Multi-Bin for Production Management

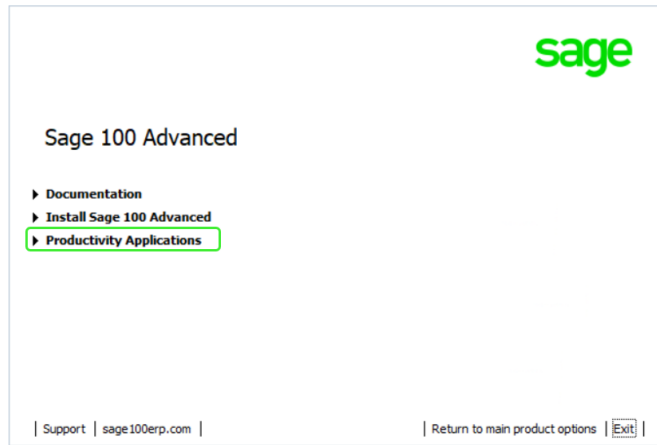
## Pre-Installation Checklist

Complete the following pre-installation checklist prior to installing Mobility 6.1041 for Scanco Multi-Bin for Sage Production Management to ensure a successful installation.

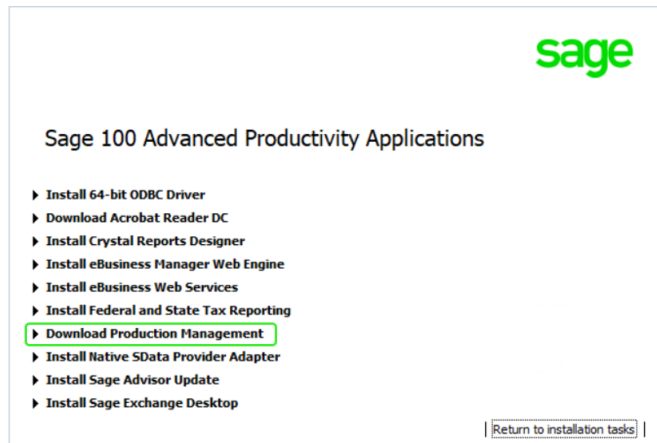
- ❑ Do **not** install Mobility 6.1041 for Scanco Multi-Bin for Sage Production Management when custom modifications exist on Sage or Scanco modified modules or products. Custom modifications must be retrofitted to the current Sage 100 version. Please contact your Sage partner, Sage Production Management partner or Scanco for information on how to obtain a quote for custom modifications to be retrofitted to Sage 100 2019 with Mobility 6.1041 for Sage Production Management.
- ❑ Do **not** install Mobility 6.1041 for Scanco Multi-Bin for Sage Production Management when extended solutions or third-party products are installed on the Sage 100 system. Please contact your Sage Production Management partner, the Sage Support department at 866-996-7243 or <https://customers.sagenorthamerica.com> or Scanco Support at [support@scanco.com](mailto:support@scanco.com) for information on evaluating extended solutions or third-party software.
- ❑ Confirm that the Sage 100 installed version is 6.10.4.0 for the Sage 100 Standard, Sage 100 Advanced or Sage 100 Premium system. Access Help menu > About Sage to review the currently installed Sage 100 version. To review additional information on the currently installed Sage 100 system in the Sage 100 System Information window, select File menu > Run. Type \*info in the Program field. Select the OK button.
- ❑ Confirm that Sage Production Management 6.10.4.0.0 is installed.
- ❑ Confirm that Scanco Multi-Bin 6.1041 for Sage Production Management 6.10.4.0.0 is installed.
- ❑ Backup the entire Sage 100 Standard, Sage 100 Advanced or Sage 100 Premium system, including programs and data files, after all data entry files are updated, and before installing Mobility 6.1041 for Scanco Multi-Bin for Sage Production Management.
- ❑ Download the Mobility 6.1041 for Scanco Multi-Bin for Sage Production Management installation file and specify registration information from <http://info.scanco.com/prod-mgmt-downloads> The Sage Production Management downloads page can be accessed from the Sage 100 2019 installation wizard.
  1. From the Sage 100 2019 installation Autorun screen, click a version of Sage 100.



2. From the Installation Tasks menu, click Productivity Applications.



3. Click Do Production Management to access the Sage Production Management downloads page.



# Mobility for Scanco Multi-Bin for Sage Production Management Installation Checklists

## New Installation of Sage 100 with Mobility for Scanco Multi-Bin for Sage Production Management

- ❑ Complete the Mobility for Scanco Multi-Bin for Sage Production Management pre-installation checklist.
- ❑ Install Sage 100 2019. Refer to the Sage 100 2019 Installation and System Administrator's Guide.
- ❑ Install Product Update 4 for Sage 100 2019.
- ❑ Run the Sage 100 workstation setup process on all applicable workstations. Refer to the Sage 100 2019 Installation and System Administrator's Guide.
- ❑ Install Sage Production Management 6.10.4.0.0. Refer to the Sage Production Management Installation Guide.
- ❑ If hot fixes are available on the Sage Production Management Downloads page for Sage Production Management version 6.10.4.0.0, install Sage Production Management 6.10.4.0.0 hot fixes. Refer to the Sage Production Management Installation Guide.
- ❑ Install Scanco Multi-Bin 6.1041 for Sage Production Management 6.10.4.0.0. Refer to the Scanco Multi-Bin for Sage Production Management Installation Guide.
- ❑ If hot fixes are available on the Sage Production Management Downloads page for Scanco Multi-Bin 6.1041 for Sage Production Management version 6.10.4.0.0, install Scanco Multi-Bin 6.1041 for Sage Production Management 6.10.4.0.0 hot fixes. Refer to the Scanco Multi-Bin for Sage Production Management Installation Guide.
- ❑ Install Mobility 6.1041 for Sage Production Management 6.10.4.0.0. Refer to the Installing Mobility for Scanco Multi-Bin for Sage Production Management section on page 10.
- ❑ If hot fixes are available on the Sage Production Management Downloads page for Mobility 6.1041 for Scanco Multi-Bin 6.1041 for Sage Production Management 6.10.4.0.0, install Mobility 6.1041 for Scanco Multi-Bin for Sage Production Management hot fixes. Refer to page 17.
- ❑ Activate the required and optional Sage 100 modules, the Sage Production Management and Mobility for Bar Code module from Library Master Main menu > Company Information. Refer to page 14.
- ❑ Create and set up company data files for required and optional Sage 100 modules and the Mobility for Bar Code module. Refer to the Creating Company Data Files for Sage 100 Modules section on page 14.
- ❑ Run the data conversion process from Library Master Main menu > Company Information.
- ❑ Define role security for Mobility for Bar Code module from Library Master Main > Role Maintenance.
- ❑ Register Mobility 6.1041 for Scanco Multi-Bin for Sage Production Management from Library Master Setup > Scanco Product Registration. Refer to the Registering Mobility for Scanco Multi-Bin for Sage Production Management section on page 15.

## **Upgrading Sage 100 to 2019 with a New Installation of Production Management, Scanco Multi-Bin for Production Management, and Mobility for Scanco Multi-Bin for Production Management**

- ❑ Complete the Mobility for Scanco Multi-Bin for Sage Production Management pre-installation checklist.
- ❑ Install Sage 100 2019. Refer to the Sage 100 2019 Installation and System Administrator's Guide.
- ❑ Install Sage 100 2019 Product Update 4. Refer to the Sage 100 2019 Customer Upgrade Guide and the Sage 100 2019 Upgrade Checklist.
- ❑ Run the Sage 100 workstation setup process on all applicable workstations. Refer to the Sage 100 2019 Installation and System Administrator's Guide.
- ❑ Migrate and convert Sage 100 data to 2019 version 6.10.4.0. Refer to the Sage 100 2019 Installation and System Administrator's Guide.
- ❑ Install Sage Production Management 6.10.4.0.0. Refer to the Sage Production Management Installation Guide.
- ❑ If hot fixes are available on the Sage Production Management Downloads page for Sage Production Management version 6.10.4.0.0, install Sage Production Management 6.10.4.0.0 hot fixes. Refer to the Sage Production Management Installation Guide.
- ❑ Install Scanco Multi-Bin 6.1041 for Sage Production Management 6.10.4.0.0. Refer to the Scanco Multi-Bin for Sage Production Management Installation Guide.
- ❑ If hot fixes are available on the Sage Production Management Downloads page for Scanco Multi-Bin 6.1041 for Sage Production Management version 6.10.4.0.0, install Scanco Multi-Bin 6.1041 for Sage Production Management 6.10.4.0.0 hot fixes. Refer to the Scanco Multi-Bin for Sage Production Management Installation Guide.
- ❑ Install Mobility 6.1041 for Scanco Multi-Bin 6.1041 for Sage Production Management 6.10.4.0.0. Refer to the Installing Mobility for Scanco Multi-Bin for Sage Production Management section on page 10.
- ❑ If hot fixes are available on the Sage Production Management Downloads page for Mobility 6.1041 for Scanco Multi-Bin for Sage Production Management, install Mobility 6.1041 for Scanco Multi-Bin for Sage Production Management hot fixes. Refer to page 17.
- ❑ Back up all company data files before conducting the company conversion process.
- ❑ Activate the required and optional Sage 100 modules, if not already activated, and the Sage Production Management module from Library Master Main menu > Company Information. Refer to the Activating Mobility for Scanco Multi-Bin for Sage Production Management section on page 14.
- ❑ Create and set up company data files for required and optional Sage 100 modules that integrate with Sage Production Management, including Production Management and Mobility for Bar Code. Refer to the Creating Company Data Files for Sage Modules section on page 14.
- ❑ Run the data conversion process from Library Master Main menu > Company Information.
- ❑ Define role security for Sage Production Management and Mobility for Bar Code from Library Master Main > Role Maintenance.
- ❑ Register Sage Production Management, Scanco Multi-Bin for Sage Production Management and Mobility 6.1041 for Scanco Multi-Bin for Sage Production Management from Library Master Setup > Scanco Product Registration. Refer to the Registering Mobility for Scanco Multi-Bin for Sage Production Management section on page 15.
- ❑ Verify the Sage 100 and Sage Production Management versions by accessing Production Management Setup > About Production Management. Refer to the About Production Management section in the Sage Production Management Installation Guide.
- ❑ Access the Custom Office Utilities Menu and run the update customized panels by selecting Custom Office Utilities menu > Update Customized Panels to Current Level. Review the placement of all user-defined fields. Refer to the Sage 100 2019 Customer Upgrade Guide and the Sage 100 2019 Upgrade Checklist.



- ❑ Reset all grids.
- ❑ Set up Sage Production Management options using the Production Management Setup Wizard. Access the setup wizard from Production Management > Setup > Production Management Options.
- ❑ Access Production Management > Mobility > Create Mfg Mobility Import Files. Select the Proceed button from the task window to create or convert Mobility for Scanco Multi-Bin for Sage Production Management data files.
- ❑ Setup Mobility for Scanco Multi-Bin for Sage Production Management by accessing Mobility for Bar Code > Setup > Mobility for Bar Code Options

## **Upgrading Sage 100 2019, Production Management and Mobility for Scanco Multi-Bin for Production Management**

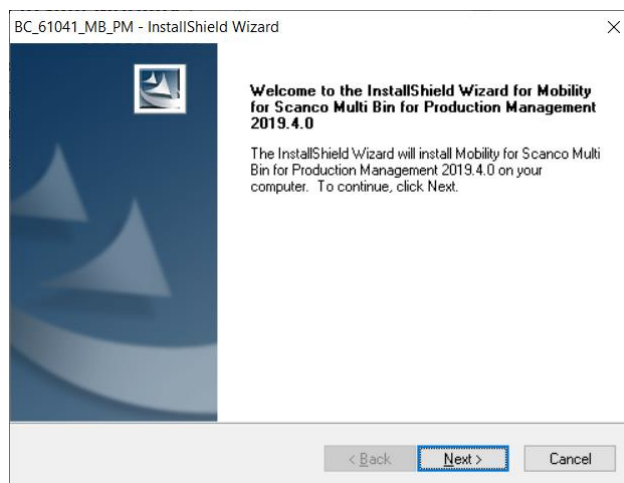
- ❑ Complete the Mobility for Scanco Multi-Bin for Sage Production Management pre-installation checklist.
- ❑ Install Sage 100 2019 Product Update 4. Refer to the Sage 100 2019 Customer Upgrade Guide and the Sage 100 2019 Upgrade Checklist.
- ❑ Install Sage Production Management 6.10.4.0.0. Refer to the Sage Production Management Installation Guide.
- ❑ If hot fixes are available on the Sage Production Management Downloads page for Sage Production Management version 6.10.4.0.0, install Sage Production Management 6.10.4.0.0 hot fixes. Refer to the Sage Production Management Installation Guide.
- ❑ Install Scanco Multi-Bin 6.1041 for Sage Production Management 6.10.4.0.0. Refer to the Scanco Multi-Bin for Sage Production Management Installation Guide.
- ❑ If hot fixes are available on the Sage Production Management Downloads page for Scanco Multi-Bin 6.1041 for Sage Production Management version 6.10.4.0.0, install Scanco Multi-Bin 6.1041 for Sage Production Management 6.10.4.0.0 hot fixes. Refer to the Scanco Multi-Bin for Sage Production Management Installation Guide.
- ❑ Install Mobility 6.1041 for Scanco Multi-Bin 6.1041 for Sage Production Management 6.10.4.0.0. Refer to the Installing Mobility for Scanco Multi-Bin for Sage Production Management section on page 10.
- ❑ If hot fixes are available on the Sage Production Management Downloads page for Mobility 6.1041 for Scanco Multi-Bin for Sage Production Management, install Mobility 6.1041 for Scanco Multi-Bin for Sage Production Management hot fixes. Refer to page 17.
- ❑ Back up all company data files before proceeding to the company conversion process.
- ❑ Run the data conversion process from Library Master > Company Information.
- ❑ Verify the Sage 100 and Sage Production Management versions by accessing Production Management Setup > About Production Management. The Sage 100 version should display as 6.10.4.0 and the Sage Production Management version should display as 6.10.4.0.0. Refer to the About Production Management section in the Sage Production Management Installation Guide.
- ❑ Access the Custom Office Utilities Menu and run the update customized panels by selecting Custom Office Utilities menu > Update Customized Panels to Current Level. Review the placement of all user-defined fields. Refer to the Sage 100 2019 Customer Upgrade Guide and the Sage 100 2019 Upgrade Checklist.
- ❑ Access Production Management > Mobility > Create Mfg Mobility Import Files. Select the Proceed button from the task window to create or convert Mobility for Scanco Multi-Bin for Sage Production Management data files.
- ❑ Reset all grids.

# Installing Mobility for Scanco Multi-Bin for Sage Production Management

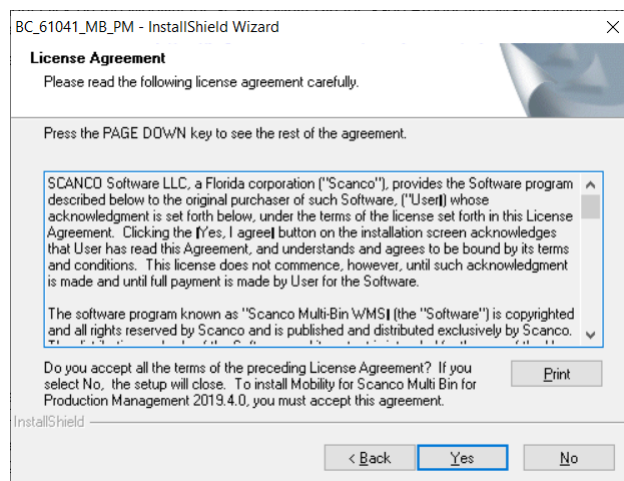
Conduct the following steps after Sage 100 2019, Product Update 4 for Sage 100 2019, Sage Production Management 6.10.4.0.0, and Scanco Multi-Bin for Sage Production Management 6.10.4.0.0 are installed successfully.

## How to Install Mobility for Scanco Multi-Bin for Sage Production Management

1. Download the BC61041\_MB\_PM.exe file from the Sage Production Management Downloads page at <http://info.scanco.com/prod-mgmt-downloads>.
2. Right click on the Mobility for Scanco Multi-Bin for Sage Production Management 6.10.4.0.0 executable file.
3. Select Run as administrator.

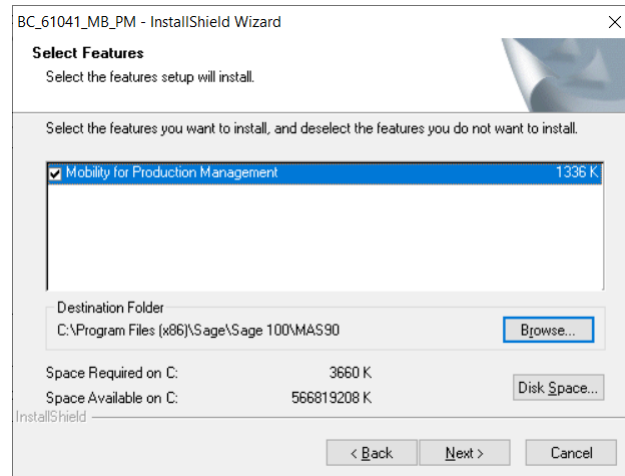


4. Select the Next button from the Mobility for Scanco Multi-Bin for Sage Production Management 2019.4.0 Welcome window.
5. Review the Mobility for Scanco Multi-Bin for Sage Production Management 2019.4.0 License Agreement.

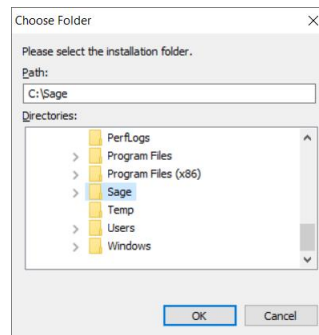


6. Select the Yes button to agree to the Mobility for Scanco Multi-Bin for Sage Production Management License Agreement and to continue with the Mobility for Scanco Multi-Bin for Sage Production Management 6.10.4.0.0 installation process.

- Accept the defaulting check box field setting for the Mobility for Sage Production Management or select the check box to install Mobility 6.10410 for Scanco Multi-Bin for Sage Production Management 6.10.4.0.0.



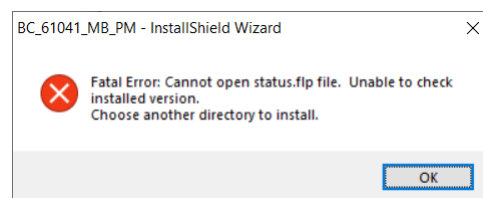
- Accept the default location of Sage 100 or select the Browse button to specify the location of Sage 100. The Choose Folder window displays after the Browse button is selected.



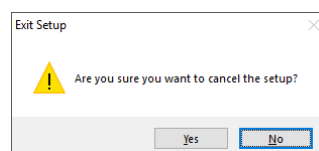
Specify the location of Sage 100 in the Path field. Select the OK button to return to the Select Features window.

- Select the Next button from the Select Features window. The installed version of Sage 100 Standard, Sage 100 Advanced or Sage 100 Premium. Sage Production Management and Scanco Multi-Bin for Sage Production Management are validated.

When Sage 100 2019 with Product Update 4 version 6.10.4.0 has not been installed at the specified Sage 100 Standard, Sage 100 Advanced or Sage 100 Premium location, the following message displays.

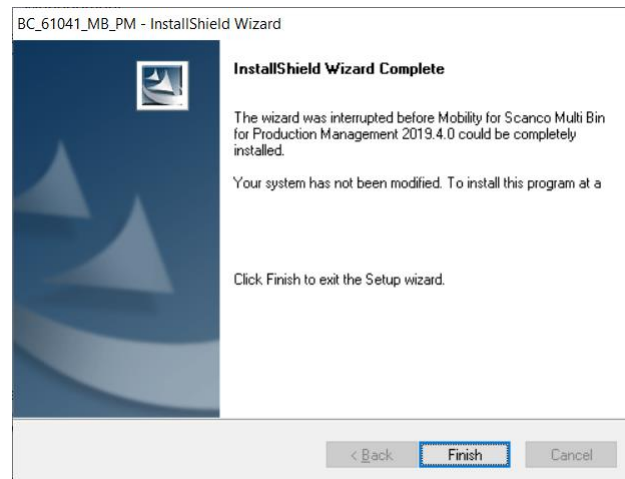


Select the OK button from the message. Select the Cancel button from the Select Features window. The following message displays.



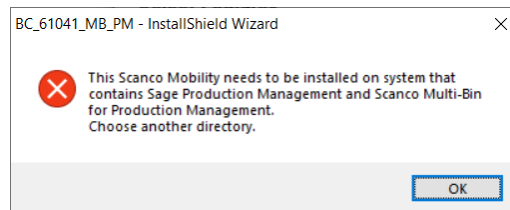
Select Yes in the message.

Select the Finish button from the InstallShield Wizard Complete window to cancel the Mobility for Scanco Multi-Bin for Sage Production Management 6.10.4.0.0 installation process.



Install Sage 100 2019 Product Update 4, Sage Production Management 6.10.4.0.0, and Scanco Multi-Bin for Sage Production Management 6.10.4.0.0 and then install Mobility for Scanco Multi-Bin for Sage Production Management.

**Warning:** When Sage Production Management 6.10.4.0.0 and/or Scanco Multi-Bin for Sage Production Management 6.10.4.0.0 is not installed in the selected location, the following message displays.



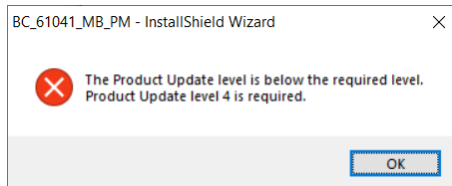
Select the OK button and modify the location to where Sage Production Management 6.10.4.0.0 and Scanco Multi-Bin for Sage Production Management 6.10.4.0.0 are installed or cancel the Mobility for Scanco Multi-Bin for Sage Production Management 6.10.4.0.0 installation process and install Sage Production Management 6.10.4.0 and Scanco Multi-Bin for Sage Production Management 6.10.4.0.0.

**Warning:** When Sage 100cloud Manufacturing is installed in the selected location, the following message displays.



Select the OK button and modify the destination folder to where Sage Production Management 6.10.4.0.0 and Scanco Multi-Bin for Sage Production Management 6.10.4.0.0 are installed. Sage Production Management, Scanco Multi-Bin for Sage Production Management and Mobility for Scanco Multi-Bin for Sage Production Management may not be installed in the same Sage 100 location containing Sage 100cloud Manufacturing.

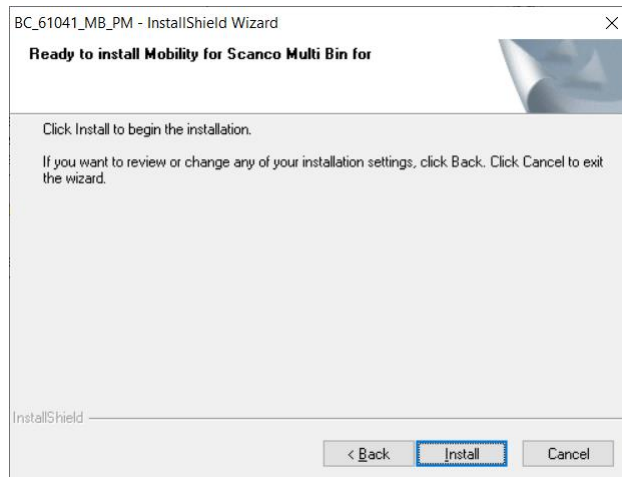
**Warning:** When Sage Production Management and/or Scanco Multi-Bin for Sage Production Management are installed but are not version 6.10.4.0.0, the following message displays.



Select OK and cancel the Mobility for Scanco Multi-Bin for Sage Production Management 6.10.4.0.0 installation process. Install Sage Production Management 6.10.4.0.0 and Scanco Multi-Bin 6.1029 for Sage Production Management 6.10.4.0.0. Then install Mobility for Scanco Multi-Bin for Sage Production Management 6.10.4.0.0.

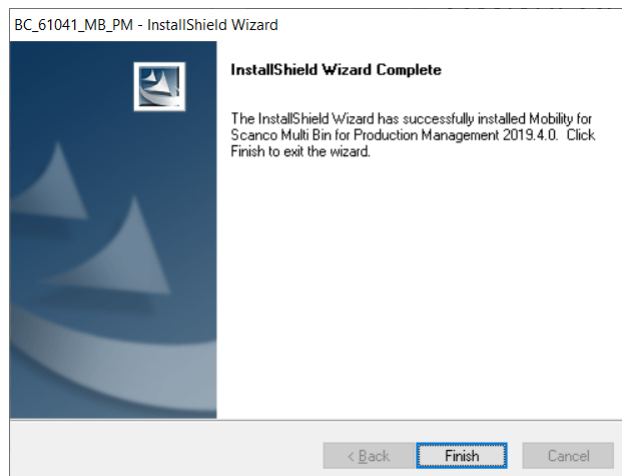
**Warning:** A unique Mobility installer is required for Scanco Multi-Bin for Sage Production Management.

10. Select the Install button from the following window to install Mobility for Scanco Multi-Bin for Sage Production Management 6.10.4.0.0.



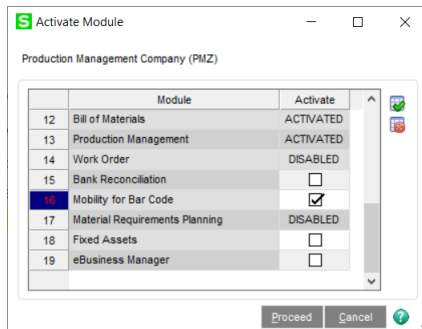
Select the Back button to return to the Select Features window. Select the Cancel button, select Yes in the message *Are you sure you want to cancel the setup?* and the Finish button from the InstallShield Wizard Complete window to cancel the Mobility for Scanco Multi-Bin for Sage Production Management 6.10.4.0.0 installation process.

11. Select the Finish button from the InstallShield Wizard Complete window to complete the Mobility for Scanco Multi-Bin for Sage Production Management 6.10.4.0.0 installation process.



# Activating Mobility for Scanco Multi-Bin for Sage Production Management

1. Access Library Master Main menu > Company Maintenance.
2. Enter the appropriate company code in the Company Code field.
3. Select the Activate button.
4. Select the Mobility for Bar Code Activate check box.

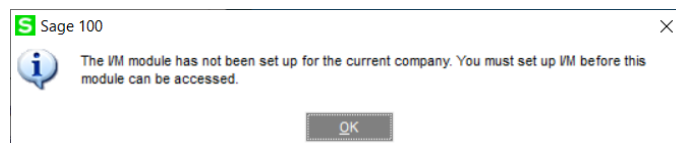
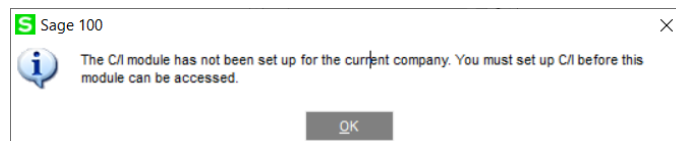


5. Select the Proceed button.

## Creating Company Data Files for Required Sage 100 Modules

Company data files must be created prior to accessing Mobility for Scanco Multi-Bin for Sage Production Management tasks after Mobility for Scanco Multi-Bin for Sage Production Management is installed on an existing Sage 100 Standard, Sage 100 Advanced or Sage 100 Premium installation or after a new company has been created. Some Sage 100 modules are required to be installed in order to utilize Sage Production Management, Scanco Multi-Bin for Sage Production Management, and Sage Mobility for Scanco Multi-Bin for Sage Production Management. General Ledger, Common Information, and Inventory Management data files must be created prior to creating Sage Production Management company data files.

The following messages display when a Sage Production Management task is accessed before company data files are created for the Sage 100 Common Information or Inventory Management modules.

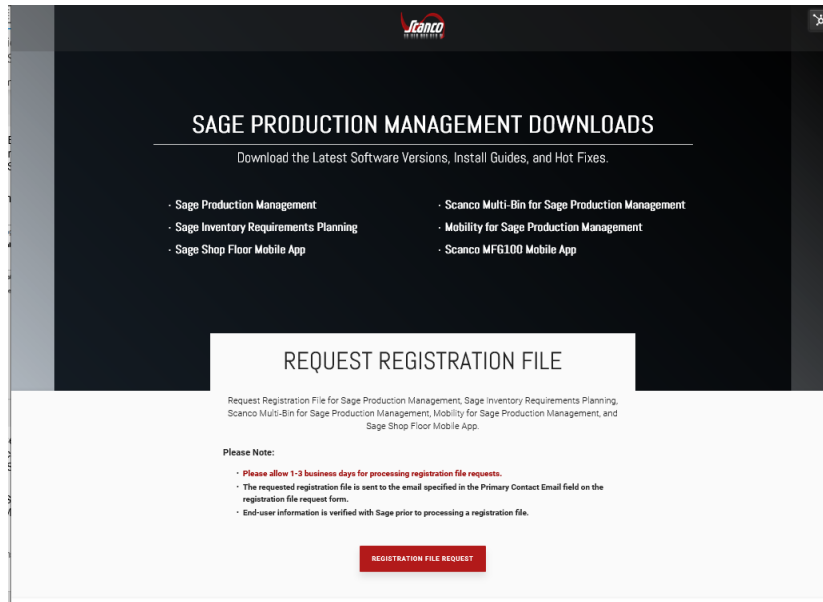


Click OK in the message. Access any Sage 100 Common Information or Inventory Management module task to access the Setup Wizard. Complete the Common Information or Inventory Management module setup process and then access Production Management Options to set up Sage Production Management.

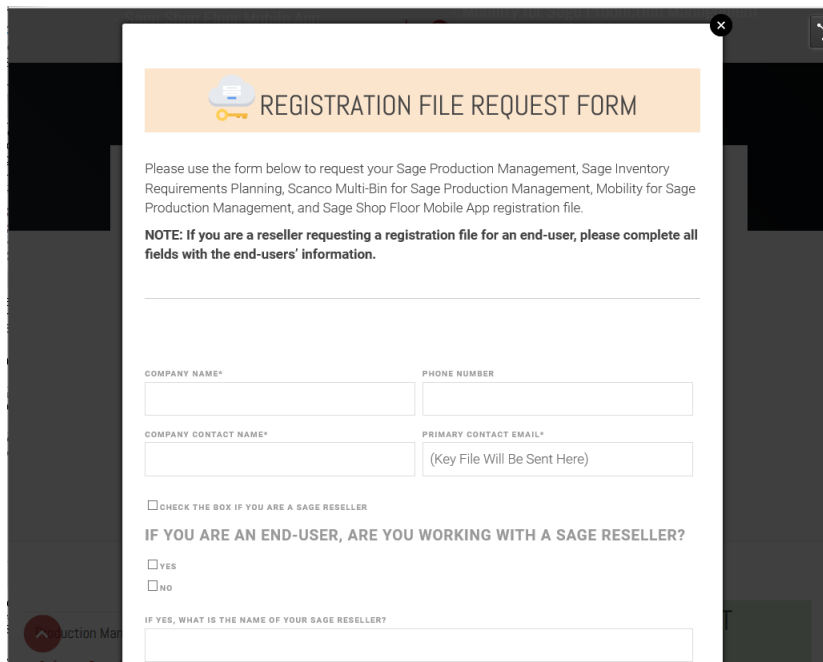
# Registering Mobility for Scanco Multi-Bin for Sage Production Management

## How to Obtain Mobility for Scanco Multi-Bin for Sage Production Management Registration

1. Access the Production Management Downloads page <http://info.scanco.com/prod-mgmt-downloads>



2. Scroll down and click on Registration File Request.




3. Enter the required information in the Sage Production Management Registration form. Fields noted with an asterisk (\*) are required.
4. Select the Sage Production Management – Make to Stock, Scanco Multi-Bin for Production Management, and Mobility for Sage Production Management check boxes. Select the check boxes for

Sage Inventory Requirements Planning, Scanco Multi-Bin for Production Management, Sage Shop Floor User/Devices, and/or Dynamic Off when these modules have been purchased.

### WHICH MODULES DO YOU WISH TO REGISTER?


- SAGE PRODUCTION MANAGEMENT – MAKE TO STOCK
- SAGE INVENTORY REQUIREMENTS PLANNING
- SCANCO MULTI-BIN FOR PRODUCTION MANAGEMENT
- SAGE SHOP FLOOR USERS/DEVICES
- MOBILITY FOR SAGE PRODUCTION MANAGEMENT
- DYNAMIC OFF

5. Select the Submit button.

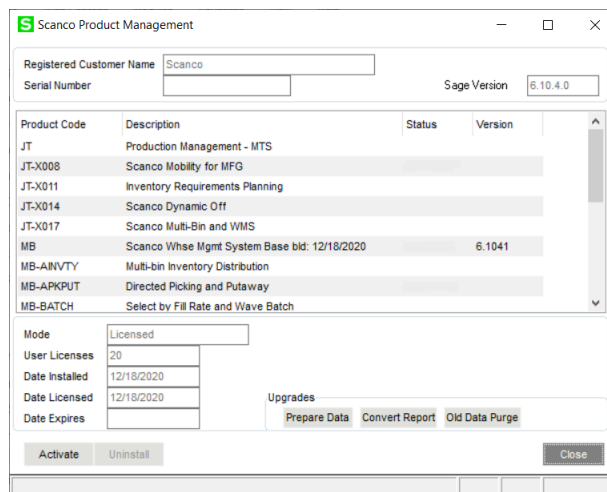
 **Note:** Please allow 1-3 business days for processing Mobility for Scanco Multi-Bin for Sage Production Management registration requests. The Mobility for Scanco Multi-Bin for Sage Production Management registration file is sent to the email specified in the Primary Contact Email field on the Sage Production Management Registration form.

## How to Register Mobility for Scanco Multi-Bin for Sage Production Management

1. When a license registration file is received via email, place the registration text file at ...\\MAS90\_Scanco in the location where Sage 100 is installed.

 **Note:** Submit registration information before downloading from the Sage Production Management Downloads page and installing Mobility for Scanco Multi-Bin for Sage Production Management.

2. Access Library Master Setup menu > Scanco Product Registration.

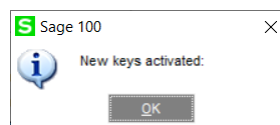


Product Code	Description	Status	Version
JT	Production Management - MTS		
JT-X008	Scanco Mobility for MFG		
JT-X011	Inventory Requirements Planning		
JT-X014	Scanco Dynamic Off		
JT-X017	Scanco Multi-Bin and WMS		
MB	Scanco Whse Mgmt System Base bld: 12/18/2020		6.1041
MB-AINVTY	Multi-bin Inventory Distribution		
MB-APKPUT	Directed Picking and Putaway		
MB-BATCH	Select by Fill Rate and Wave Batch		

3. Verify the correct Sage 100 Serial number and User Licenses displays.

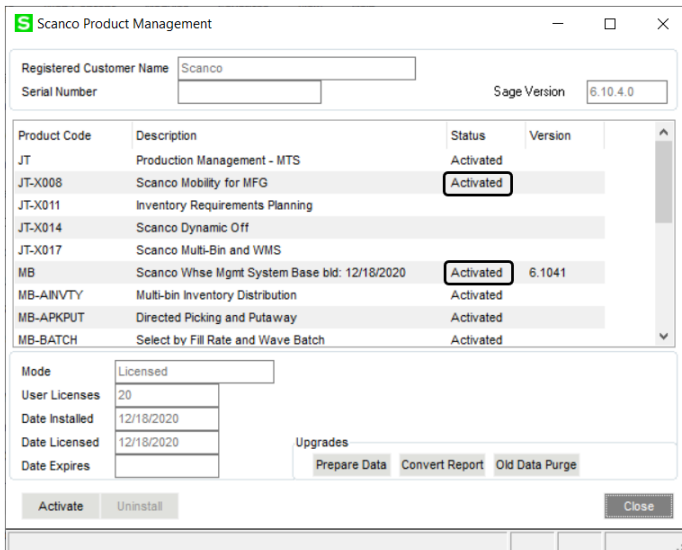
4. Select the Activate button.

5. Select OK in the *New keys activated.* message.



6. Verify Activated displays in the Status field for the Scanco Mobility for MFG product code record.





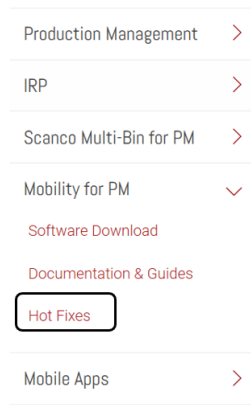
7. Select the Close button.

## Mobility for Scanco Multi-Bin Production Management Hot Fixes

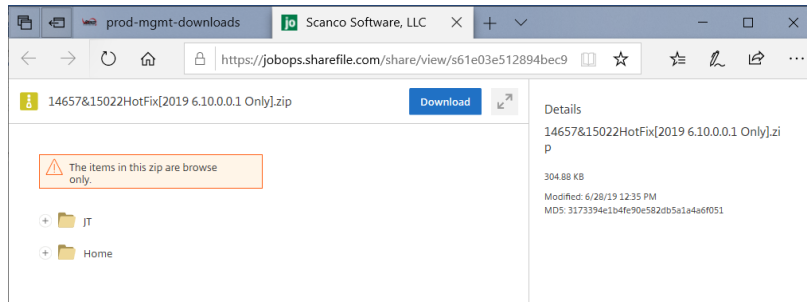
Occasionally hot fixes are required to be installed after installing Mobility for Scanco Multi-Bin for Sage Production Management. Access Mobility for Scanco Multi-Bin for Production Management hot fixes from the Sage Production Management Downloads page <http://info.scanco.com/prod-mgmt-downloads>

## How to Install Mobility for Scanco Multi-Bin for Sage Production Management Hot Fixes

1. Access the Sage Production Management Downloads page <http://info.scanco.com/prod-mgmt-downloads>
2. Click on Mobility for PM menu.
3. Click on Hot Fixes.



4. Review the available hot fixes for Mobility for Scanco Multi-Bin for Sage Production Management for the currently installed version.
  - ⚠ **Warning:** Hot fixes are version specific. Only install hot fixes for the current Mobility for Scanco Multi-Bin for Sage Production Management version.
5. Click on a hot fix link to be directed to the download file.



6. Click on the Download button.
7. Specify the location to download the hot fix.
8. Extract the hot fix file to the MAS90 directory where Sage 100 and Mobility for Scanco Multi-Bin for Sage Production Management are installed.

**Warning:** If the hot fix zip file is extracted to a location other than the MAS90 directory, the hot fix programs must be copied to the file location specified in the hot fix zip file.

9. Select to replace the files in the destination if the hot file was extracted to the MAS90 directory where Sage 100 and Mobility for Scanco Multi-Bin for Sage Production Management are installed. The hot fix program is now located in the correct directory in the Sage 100 and Mobility for Scanco Multi-Bin for Sage Production Management installation.
10. Review the document(s) included in the hot fix download file. Descriptions and instructions are included in this documentation.

