



sage Production
Management

Sage Production Management 2019.2.2

What's New

Version 6.10.2.0.2

April 2020

© Copyright 2020. All rights reserved. Production Management is a trademark of Scanco Software, LLC. Sage, the Sage logos, and the Sage product and service names mentioned herein are registered trademarks or trademarks of Sage Software, Inc., or its affiliated entities. All other trademarks are the property of their respective owners. The contents herein are summary in nature and subject to change without notification from Scanco Software, LLC. Scanco Software, LLC, accepts no responsibility for inadvertent errors or omissions.

Scanco Software, LLC
1000 N Tamiami Trail
Suite 201
Nokomis, FL 34275

Contents

Chapter 1 — 3

Introduction 3

Chapter 2 — 4

What's New in Production Management Version 6.10.2.0.2 — 4

Production Management 4

Production Management Menu Tasks 4

Chapter 3 — 5

What's New in Production Management Version 6.10.2.0.0 5

Bill of Materials 5

Bill of Materials Inquiry 5

Inventory Management 5

Item Maintenance Transaction Tab 5

Library Master 6

Role Maintenance 6

Production Management 7

Work Ticket Entry Copy From 7

Work Ticket Entry Steps Tab 7

Crystal File Generation 7

Document Date Warning Feature 7

Default Values for Work Ticket Entry Window 8

Work Ticket Entry Header Tab 8

Work Ticket Transaction Entry 10

Labor Entry 11

Chapter 4 — 12

What's New in Production Management Version 6.10.1.0.0 — 12

Inventory Management 12

Item Maintenance Orders Tab 12

Library Master 12

Rebuild Production Management Sort Files 12


Production Management 13

Convert Work Order Data	13
Daily Transaction Register	14
Labor Entry and Labor Register/Update	14
Materials Shortage Report	15
Production Management Options	15
Production Management Options Listing	17
Work Ticket Entry Materials Tab	17
Work Ticket Entry Materials Tab Purchase Order Button	17
Work Ticket Entry Copy From	17
Work Ticket Entry Import Materials	18
Work Ticket Entry Release Process	18
Work Ticket Entry Step Copy	18
Work Ticket Entry Steps Tab	19
Work Ticket Entry and Work Ticket Inquiry	19
Work Ticket Printing	19
Purchase Order	20
Purchase Order Entry	20

Chapter 1

Introduction

This document describes the enhancements included in Sage Production Management 2019.2.2 Version 6.10.2.0.2. The latest update incorporates everything that was added in Sage Production Management 2019 Versions 6.10.0.0.1, 6.10.1.0.0, 6.10.2.0.0, 6.10.2.0.1 and 6.10.2.0.2. In other words, you only need to install the latest update to acquire the Production Management module and the features described for all updates. Depending on your purchase agreement, some features described here may not be available in your product.

 **Note:** Within this document *Scanco Multi-Bin* refers to the Scanco Multi-Bin product without Sage Production Management installed in Sage 100. *Scanco Multi-Bin for Sage Production Management* refers to Sage Production Management and the version of Scanco Multi-Bin for Sage Production Management installed in Sage 100.

Chapter 2

What's New in Production Management Version 6.10.2.0.2

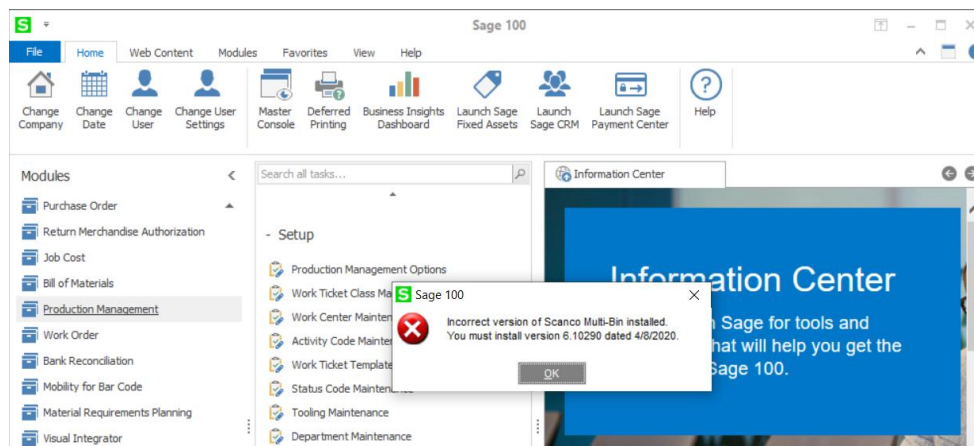
This chapter describes the enhancements added in Sage Production Management 2019.2.2 Version 6.10.2.0.2. Changes are listed by module.

Production Management

The following change was made in the Production Management module.

Production Management Menu Tasks

Scanco Multi-Bin for Sage Production Management must be installed after Sage Production Management in order to utilize Scanco Multi-Bin features. When Scanco Multi-Bin for Sage Production Management is not installed in Sage 100 containing Sage Production Management and Scanco Multi-Bin, the following message displays when a Sage Production Management menu task is selected.



Select the OK button to return to the menu. Exit out of Sage 100. Install Scanco Multi-Bin for Sage Production Management. Refer to the Scanco Multi-Bin for Sage Production Management Installation guide for more information.

Chapter 3

What's New in Production Management Version 6.10.2.0.0

This chapter describes the enhancements added in Sage Production Management 2019.2 Version 6.10.2.0.0. Changes are listed by module.

Bill of Materials

The following changes were made in the Bill of Materials module.

Bill of Materials Inquiry

The step number assigned to components now displays when the Single-Level radio button is selected in Bill of Materials Inquiry.

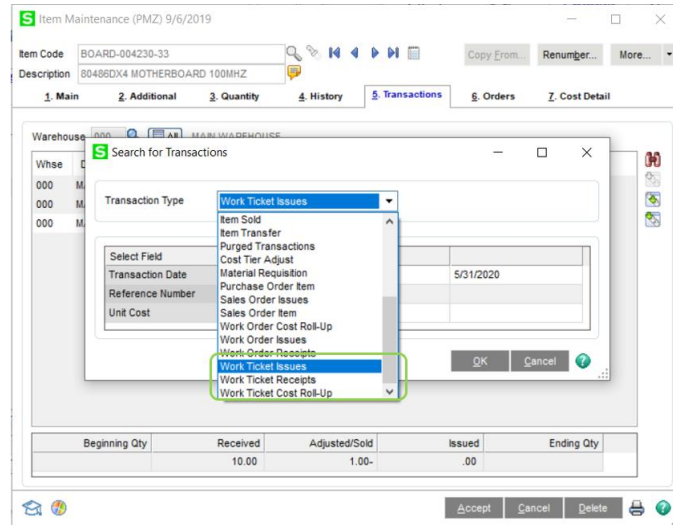
This feature is documented under reference ID 13594.

Inventory Management

The following changes were made in the Inventory Management module.

Item Maintenance Transaction Tab

New filter options are now available from the Transaction Type field in the Search for Transactions window on the Item Maintenance Transaction tab. Select *Work Ticket Issues* to display transaction records that occurred for the selected item from issues and de-issues of work ticket materials. Select *Work Ticket Receipts* to display transaction records that occurred for the selected item by updating completion transaction for a work ticket parent item. Select *Work Ticket Cost Roll-Up* to display transactions that were created by the Production Management Cost Roll-Up Register.



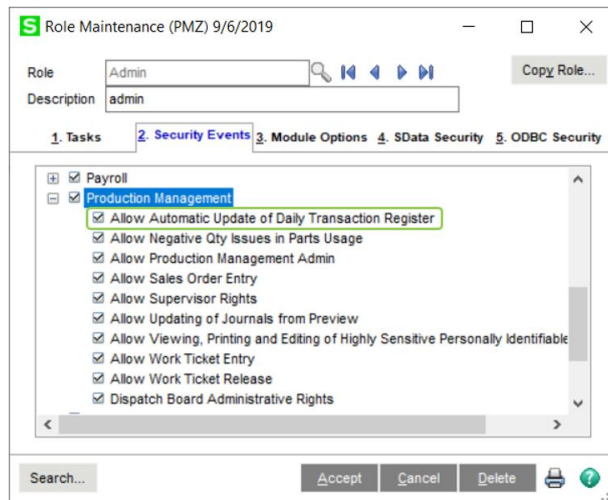
This feature is documented under reference ID 14511.

Library Master

The following changes were made in the Library Master module.

Role Maintenance

Select the Allow Automatic Update of Daily Transaction Register check box on the Security Events tab under the Production Management option to automatically update the Daily Transaction Register after updating transactions from the Daily Materials Usage Register/Update, Work Ticket Transaction Journal/Update, Cost Roll-Up Register and Labor Register/Update.



This feature is documented under reference ID 15467.

Production Management

The following changes were made in the Production Management module.

Work Ticket Entry Copy From

The Option Selection window automatically displays when bill options are not selected before selecting the Accept button from the Work Ticket Entry Copy From window.

This feature is documented under reference ID 14662.

Work Ticket Entry Steps Tab

Select the Purchase Order Inquiry button from the Steps tab to view the purchase order linked to the step. This button is only available when a purchase order is linked to the selected step.

Work Ticket Entry (PMZ) 9/6/2019

Work Ticket No: 00000095015

1. Header 2. Steps 3. Mat

Button is yellow and enabled when a purchase order is linked to a selected step.

Row	Step No	Description	Activity Code	Work Center	Orig Budget Hours	Rev Budget Ho
15	000065	Format Hard Drive	00001	TST	1.00	1
16	000070	System Burn-in	00002	TST	8.00	8
17	000072	Test Floppy Drive	00003	TST	80.00	80
18	000075	Test Hard Drive	00004	TST	40.00	40
19	000080	Pack keyboard	00001	FIN	1.00	1
20	000090	Pack Monitor	00002	FIN	2.00	2
21					0.00	0

Status Code: NEW
Status Comment: NEW TICKET
Qty Completed: 10.00
Tool Code
Change Order

Print W/T... Print Pick... Accept Cancel Delete

This feature is documented under reference ID 14693.

Crystal File Generation

The MaterialsStatus field, available in the JT_WorkTicketWrk file, may be used to hide deleted work ticket materials from custom reports.

This feature is documented under reference ID 15219.

Document Date Warning Feature

The Use Document Date Warning check box, found on the Preferences tab in Library Master > Company Information, must be selected in order for the Document Date Warning feature to be utilized in the Default Values for Work Ticket Entry window, the Work Ticket Entry Header tab, Work Ticket Transaction Entry and Labor Entry. Refer to the Sage 100 2019 What's New document for more information on this Sage 100 2019 Product Update 2 feature.

Default Values for Work Ticket Entry Window

The following warning message displays, based on the Document Date Warning fields in Company Information and the year and period assigned in Production Management Options, when the Work Ticket Date is modified in the Default Values for Work Ticket Entry window.

Select Yes in the message to accept the date entered in the field or No to assign the previously assigned date.

This feature is documented under reference ID 15566.

Work Ticket Entry Header Tab

The following warning message displays, based on the Document Date Warning fields in Company Information and the year and period assigned in Production Management Options, when the defaulting Production Management accounting date falls outside the defined date range and a new work ticket is created.

Select OK in the message to accept the defaulting date or No to assign the previously assigned date.

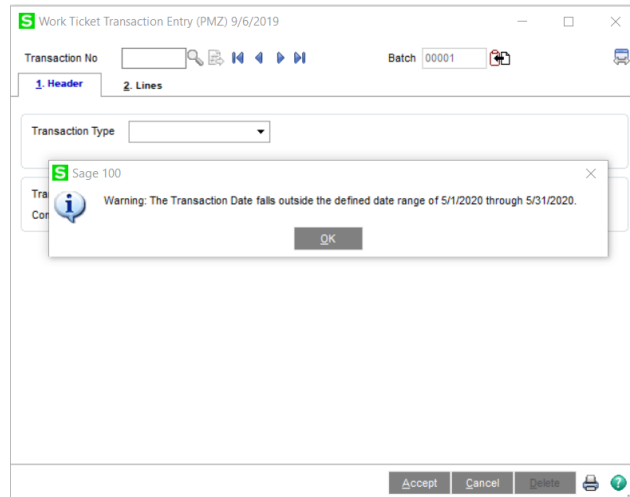
The following warning message displays, based on the Document Date Warning fields in Company Information and the year and period assigned in Production Management Options, when a date is entered in the Work Ticket Date field on the Header tab and the date falls outside the defined date range.

Select Yes in the message to accept the date entered in the field or No to assign the previously assigned date.

This feature is documented under reference ID 15566.

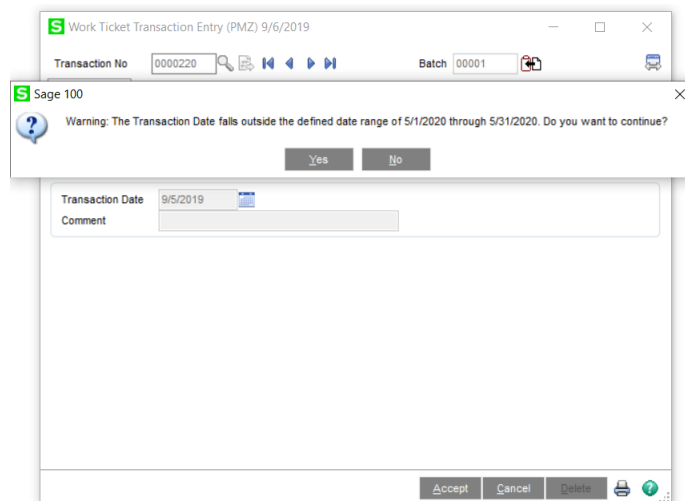
Work Ticket Transaction Entry

The following warning message displays, based on the Document Date Warning fields in Company Information and the year and period assigned in Production Management Options, when the defaulting Production Management accounting date falls outside the defined date range and a new transaction is created.



Select OK in the message to accept the defaulting date or No to assign the previously assigned date.

The following warning message displays, based on the Document Date Warning fields in Company Information and the year and period assigned in Production Management Options, when a date is entered in the Transaction Date field on the Header tab and the date falls outside the defined date range.



Select Yes in the message to accept the date entered in the field or No to assign the previously assigned date. This feature is documented under reference ID 15566.

This feature is documented under reference ID 15567.

Labor Entry

The following warning message displays, based on the Document Date Warning fields in Company Information and the year and period assigned in Production Management Options, when the defaulting Production Management accounting module date falls outside the defined date range and a new labor transaction is created.

The screenshot shows the 'Labor Entry (PMZ) 9/6/2019' window. The Transaction Date is 9/6/2019, Transaction Type is Labor Entry, Employee No is 11-0000100, Work Ticket No is 00000095015, and Step No is 000000. A Sage 100 warning dialog box is displayed over the window, stating: 'Warning: The Transaction Date falls outside the defined date range of 5/1/2020 through 5/31/2020.' The dialog box has an 'OK' button. The background window shows fields for Department Worked In, Hours Worked (0.00), Work Performed, Current Status Code, Current Status, New Status Code, New Status Comment, Total Completed (.00), and Qty Completed (.00). Buttons at the bottom include Accept, Cancel, and Delete.

Select OK in the message to accept the defaulting date or No to assign the previously assigned date.

The following warning message displays, based on the Document Date Warning fields in Company Information and the year and period assigned in Production Management Options, when a date is entered in the Transaction Date field and the date falls outside the defined date range.

The screenshot shows the 'Labor Entry (PMZ) 9/6/2019' window. The Transaction Date is 9/5/2019, Transaction Type is Labor Entry, Employee No is 11-0000100, Work Ticket No is 00000095015, and Step No is 000000. A Sage 100 warning dialog box is displayed over the window, stating: 'Warning: The Transaction Date falls outside the defined date range of 5/1/2020 through 5/31/2020. Do you want to continue?' The dialog box has 'Yes' and 'No' buttons. The background window shows fields for Work Center, Earnings Code, Start Time (2:58PM), End Time, Hours Worked (0.00), Work Performed, Current Status Code (NEW), Current Status (NEW TICKET), New Status Code, New Status Comment, Total Completed (.00), and Qty Completed (.00). Buttons at the bottom include Accept, Cancel, and Delete.

Select Yes in the message to accept the date entered in the field or No to assign the previously assigned date. This feature is documented under reference ID 15566.

Chapter 4

What's New in Production Management Version 6.10.1.0.0

This chapter describes the enhancements added in Sage Production Management 2019.1 Version 6.10.1.0.0. Changes are listed by module.

Inventory Management

The following changes were made in the Inventory Management module.

Item Maintenance Orders Tab

When the Include Open W/T Materials as Inventory Demand check box in Production Management Options is selected, work ticket records for items assigned as materials on open work tickets now display on the Item Maintenance Orders Tab.

When the Include Open W/T Materials as Inventory Demand check box in Production Management Options is not selected, work ticket records for items assigned as materials on open work tickets do not display on the Item Maintenance Orders Tab. In this situation, work ticket records for items assigned as materials on work tickets display when the work ticket is released.

This feature is documented under reference ID 15018

Library Master

The following changes were made in the Library Master module.

Rebuild Production Management Sort Files

The Required for Work Ticket value is recalculated based on the Include Open W/T Materials as Inventory Demand check box in Production Management Options when Yes is selected from the message *Do you want to recalculate open Work Ticket quantities in the Inventory Masterfile?*

When the Include Open W/T Materials as Inventory Demand check box in Production Management Options is selected and Yes is selected from the message *Do you want to recalculate open Work Ticket quantities in the Inventory Masterfile?*, the Req for W/T field is recalculated to include required values for materials assigned to open work tickets. The Req for W/T field in Item Maintenance includes the quantity required for work ticket materials on open work tickets.

When the Include Open W/T Materials as Inventory Demand check box is not selected and Yes is selected from the message *Do you want to recalculate open Work Ticket quantities in the Inventory Masterfile?*, the Req for W/T field is recalculated to not include required values for materials assigned to open work tickets. The Req for W/T field in Item Maintenance does not include the quantity required for work ticket materials on open work tickets.

The Req for W/T field in Item Maintenance includes the quantity required for work ticket materials on released work tickets, regardless of the setting of the Include Open W/T Materials as Inventory Demand check box in Production Management Options.

When the Include Open W/T Materials as Inventory Demand check box in Production Management Options is selected or cleared and No is selected from the message *Do you want to recalculate open Work Ticket quantities in the Inventory Masterfile?*, the Req for W/T field in Item Maintenance is not recalculated.

This feature is documented under reference ID 15014.

Production Management

The following changes were made in the Production Management module.

Convert Work Order Data

When converting open work orders to Production Management open work tickets, the Req for W/T value is recalculated based on the Include Open W/T Materials as Inventory Demand check box in Production Management Options.

When the Include Open W/T Materials as Inventory Demand check box is selected, the required values for materials assigned to open work tickets are recorded as inventory demand. The Req for W/T field in Item Maintenance includes the quantity required for work ticket materials on open work tickets.

Item Maintenance (PMZ) 7/9/2019

Item Code: BOARD-04500
Description: MOTHERBOARD

1. Main 2. Additional 3. Quantity 4. History 5. Transactions 6. Orders 7. Cost Detail

Product Line: CARD COMPUTER CARDS
Product Type: Finished Good
Valuation: Average Cost
Procurement: Buy to Stock
Weight: 0.0000
Volume: 0.0000
Unit of Measure: EACH
Standard: EACH
Purchases: EACH
Sales: EACH
No. of EACH: 1
No. of EACH: 1

Price Code: 000
Default Whse: MAIN WAREHOUSE
Primary Vendor: MAKE
MAKE ITEM VENDOR

Sales: Retail Price: .00, Standard Price: .00, Last Sold: .00
Purchases: Standard Cost: 436.900, Average Cost: 436.900, Last Receipt: 5/31/2020
Last Costs: Item: 436.900, Allocated: .000, Total: 436.900

Whse	Description	On Hand	On PO	On SO	On Bk Ord	Committed	On W/T	Req for W/T	Available
000	MAIN WAR...	30.00	.00	.00	.00	.00	.00	100.00	70.00

Accept Cancel Delete

When the Include Open W/T Materials as Inventory Demand check box is not selected, the required values for materials assigned to open work tickets are not recorded as inventory demand. The Req for W/T field in Item Maintenance does not include the quantity required for work ticket materials on open work tickets.

When the Include Open W/T Materials as Inventory Demand check box is not selected, the Req for W/T field includes the quantity required for work ticket materials when the work ticket is released.

This feature is documented under reference ID 15012.

A record now displays in the Activity Log when Work Order data is converted to Production Management data.

Type	Date	Time	Description	Company	Module
System Activity	07/08/2019	11:21:54.63	Files Created for XY2 Company	XY1	SVS
System Activity	07/08/2019	11:21:52.12	SV_CompanyM4T - XY2 created.	XY1	SVS
System Setup Option	07/08/2019	11:21:52.41	Company option CreditCardEnabled changed to true company XY2	XY1	SVS
System Activity	07/08/2019	11:20:43.06	Conversion from Work Order to Production Management completed	XY1	JIT
System Activity	07/08/2019	11:20:42.91	Work Ticket Quantities Reconstructed in Item Warehouse file for XY1	XY1	JIT
System Setup Option...	07/08/2019	11:20:40.86	JIT System Parameters Changed:	XY1	JIT
System Activity	07/08/2019	11:20:40.33	Data files created for module JIT in XY1.	XY1	JIT
System Activity	07/08/2019	11:20:09.65	Conversion from Work Order to Production Management started	XY1	JIT
System Activity	07/08/2019	11:19:59.21	JIT System Parameters Changed:	XY1	JIT
System Setup Option...	07/08/2019	11:19:59.17	JIT System Parameters Changed:	XY1	JIT
System Setup Option...	07/08/2019	11:19:37.31	JIT System Parameters Changed:	XY1	JIT
System Setup Option...	07/08/2019	11:19:37.30	JIT Field Service Parameters Changed:	XY1	JIT
System Setup Option...	07/08/2019	11:19:37.29	JIT Scheduling Parameters Changed:	XY1	JIT
System Setup Option...	07/08/2019	11:19:37.29	JIT Time Tracker Parameters Changed:	XY1	JIT
System Activity	07/08/2019	11:12:55.20	Data files created for module JIT in XY1.	XY2	SVS

This feature is documented under reference ID 14689

Daily Transaction Register

JT140_WorkTicketNo in GL_DetailPosting is now populated by the Daily Transaction Registers for all transaction updated to work tickets. This feature is documented under reference ID 14542.

Labor Entry and Labor Register/Update

LE displays in the Status field on the Work Ticket Inquiry and Work Ticket Entry Inquiry tab for labor transactions created from Labor Entry or the Labor Register/Update.

Work Ticket Entry (PMZ) 7/9/2019

Work Ticket No: 000000095031

1. Header 2. Steps 3. Materials 4. Inquiry 5. Schedule 6. Totals

☐ Status Changes
 ☐ Materials
 ☒ Labor
 ☐ Direct Costs
 ☐ Purchase Orders
 ☐ Completions

Step No	Trans Date	Employee No	Employee Name	Dept	Source	Hours	Earnings Code	Activity Code	Work Cent
000020	7/9/2019	11-0000100	JERRY A. THOMAS	00	LE	1.00	000001	00002	CAB

Step Filter: <All>

Print W/T... Print Pick... Accept Cancel Delete

This feature is documented under reference ID 14489.

Materials Shortage Report

Status check boxes are now available on the task window to filter data based on work ticket statuses.

Material Shortage Report (PMZ) 7/9/2019

Report Setting: STANDARD Default Report: ☒ Save

Description: Material Shortage Report

Statuses:

All ☒

Open ☒

Quote/Estimate ☒

Released ☒

Cutoff Date: 7/9/2019

Selections:

Select Field	Operand	Value
Work Ticket No	All	

RICOH SP 325DNw PCL 6 Keep Window Open After: Print ☐ Preview ☐ Print Preview Setup

Select to print material shortages for materials on open, estimates, released or all work tickets. This feature is documented under reference ID 15042.

Production Management Options

The Include Open W/T Materials as Inventory Demand check box field is now available on the Entry tab.

Production Management Options (PMZ) 7/9/2019

1. Main 2. Entry 3. Forms 4. Printing 5. Quick Print 6. Labor

Batch Processing

Description	Enable	Next Batch
Transaction Entry	<input checked="" type="checkbox"/>	00003
Labor Entry	<input checked="" type="checkbox"/>	00001

Next Automatic Work Ticket No 000000095031
Next Automatic Service Ticket No 500000000001
Next Automatic Transaction No 0000219

Defaults

Default Warehouse for Parent Item 000
Use Item Default Warehouse for Parent Item ☐
Default Warehouse for Materials 000
Use Item Default Warehouse for Materials ☐
Include Open W/T Materials as Inventory Demand ☒
Default Make to Stock Work Ticket Class STK
Default Work Ticket Class for Sales Order Entry ☐
Explode Subassemblies ☐
Default General Ledger Accounts
Special Item Purchases 115-000-000 Inventory - Raw Material

Auto Issue Labor ☒ Backflush Labor ☒
Auto Issue Materials ☒ Backflush Materials ☒
Limit Materials Auto Issue to Quantity On Hand ☐
Auto Issue Materials Shortage Report Sort by Item Code
Cost Completion Method Actual
Make To Stock
Auto Release Work Ticket ☐

Accept Cancel

After selecting or clearing this check box field, the following message displays.

Sage 100

Changing this parameter will require you to Rebuild Sort files for the Production Management module. Do you wish to Continue?

Yes No

Select yes to continue with the change. Select No to cancel the change.

Warning: You must run the Rebuild Sort files process for the Production Management module and select Yes in the message *When Do you want to recalculate open Work Ticket quantities in the Inventory Masterfile?* in order for the Req for W/T value to be recalculated for materials assigned to existing open work tickets.

This feature is documented under reference ID 14996.

When the Include Open W/T Materials as Inventory Demand check box is selected, the required values for materials assigned to open work ticket are recorded as inventory demand. The Req for W/T field in Item Maintenance includes the quantity required for work ticket materials on open work tickets.

Item Maintenance (PMZ) 7/9/2019

Item Code BOARD-04500
Description MOTHERBOARD

1. Main 2. Additional 3. Quantity 4. History 5. Transactions 6. Orders 7. Cost Detail

Product Line CARD COMPUTER CARDS
Product Type Finished Good
Valuation Average Cost
Procurement Buy to Stock
Inventory Cycle

Unit of Measure
Standard EACH
Purchases EACH
Sales EACH
No. of EACH 1
No. of EACH 1

Price Code
Default Whse 000 MAIN WAREHOUSE
Primary Vendor MAKE
MAKE ITEM VENDOR

Sales
Retail Price .00
Standard Price .00
Last Sold

Purchases
Standard Cost 436.900
Average Cost 436.900
Last Receipt 5/31/2020

Last Costs
Item 436.900
Allocated .000
Total 436.900

Quantities

Whse	Description	On Hand	On PO	On SO	On Bk Ord	Committed	On W/T	Req for W/T	Available
000	MAIN WAR...	30.00	.00	.00	.00	.00	.00	100.00	70.00

Accept Cancel Delete

When the Include Open W/T Materials as Inventory Demand check box is not selected, the required values for materials assigned to open work tickets are not as inventory demand. The Req for W/T field in Item Maintenance does not include the quantity required for work ticket materials on open work tickets.

Production Management Options Listing

The Include Open W/T Materials as Inventory Demand field displays on the Options Listing. This feature is documented under reference ID 14998

Work Ticket Entry Materials Tab

When the Include Open W/T Materials as Inventory Demand check box in Production Management Options is selected and materials are added to open work tickets from the Work Ticket Entry Materials tab, the required values for materials assigned to open work tickets are recorded as inventory demand. The Req for W/T field in Item Maintenance includes the quantity required for work ticket materials on open work tickets.

When the Include Open W/T Materials as Inventory Demand check box in Production Management Options is not selected and materials are added to open work tickets from the Work Ticket Entry Materials tab, the required values for materials assigned to the open work ticket are not recorded as inventory demand.

In this situation, the Req for W/T field in Item Maintenance does not include the quantity required for materials on open work tickets. The Req for W/T field includes the quantity required for work ticket materials when the work ticket is released.

This feature is documented under reference ID 15001.

Work Ticket Entry Materials Tab Purchase Order Button

The Purchase Order button is enabled for open work tickets when the Include Open W/T Materials as Inventory Demand check box in Production Management Options is selected.

The Purchase Order button is disabled for open work tickets when the Include Open W/T Materials as Inventory Demand checkbox in Production Management Options is not selected. In this situation, work ticket items can only be linked to purchase orders when the work ticket is released.

This feature is documented under reference ID 15000.

Work Ticket Entry Copy From

When the Include Open W/T Materials as Inventory Demand check box in Production Management Options is selected and materials are added to open work tickets using the Work Ticket Entry Copy From feature, the required values for materials assigned to open work tickets are recorded as inventory demand. The Req for W/T field in Item Maintenance includes the quantity required for work ticket materials on open work tickets.

When the Include Open W/T Materials as Inventory Demand check box in Production Management Options is not selected and materials are added to open work tickets using the Work Ticket Entry Copy From feature, the required values for materials assigned to open work tickets are not recorded as inventory demand.

In this situation, the Req for W/T field in Item Maintenance does not include the quantity required for materials on open work tickets. The Req for W/T field includes the quantity required for work ticket materials when the work ticket is released.

This feature is documented under reference ID 15005.

Work Ticket Entry Import Materials

When the Include Open W/T Materials as Inventory Demand check box in Production Management Options is selected and materials are added to open work tickets using the Work Ticket Entry Import Materials feature, the required values for materials assigned to open work tickets are recorded as an inventory demand. The Req for W/T field in Item Maintenance includes the quantity required for work ticket materials on open work tickets.

When the Include Open W/T Materials as Inventory Demand check box in Production Management Options is not selected and materials are added to open work ticket using the Work Ticket Entry Import Materials feature, the required values for materials assigned to open work tickets are not recorded as inventory demand.

In this situation, the Req for W/T field in Item Maintenance does not include the quantity required for materials on open work tickets. The Req for W/T field includes the quantity required for work ticket materials when the work ticket is released.

This feature is documented under reference ID 15007.

Work Ticket Entry Release Process

When the Include Open W/T Materials as Inventory Demand check box in Production Management Options is selected, materials were assigned to the work ticket when the work ticket was assigned an open status and the work ticket is released, the Req for W/T field in Item Maintenance is not updated. In this situation, the Req for W/T field in Item Maintenance was updated when materials were assigned to the work ticket when the work ticket was assigned an open status.

When the Include Open W/T Materials as Inventory Demand check box in Production Management Options is not selected, materials were assigned to the work ticket when the work ticket was assigned an open status and the work ticket is released, the required values for materials assigned to the released work ticket are recorded as inventory demand. In this situation, the Req for W/T field in Item Maintenance includes the quantity required for materials when the work ticket is released.

This feature is documented under reference ID 15004.

Work Ticket Entry Step Copy

When the Include Open W/T Materials as Inventory Demand check box in Production Management Options is selected and materials are added to open work tickets using the Work Ticket Entry Step Copy feature, the required values for materials assigned to open work tickets are recorded as inventory demand. The Req for W/T field in Item Maintenance includes the quantity required for work ticket materials on open work tickets.

When the Include Open W/T Materials as Inventory Demand check box in Production Management Options is not selected and materials are added to open work tickets using the Work Ticket Entry Step Copy feature, the required values for materials assigned to open work tickets are not recorded as inventory demand.

In this situation, the Req for W/T field in Item Maintenance does not include the quantity required for materials on open work tickets. The Req for W/T field includes the quantity required for work ticket materials when the work ticket is released.

This feature is documented under reference ID 15006.

Work Ticket Entry Steps Tab

The Purchase Order button is enabled for open work tickets when the Include Open W/T Materials as Inventory Demand check box in Production Management Options is selected.

The Purchase Order button is disabled for open work tickets when the Include Open W/T Materials as Inventory Demand checkbox in Production Management Options is not selected. In this situation, work ticket items can only be linked to purchase orders when the work ticket is released.

This feature is documented under reference ID 14999.

Work Ticket Entry and Work Ticket Inquiry

A Status field displays when the Labor radio button is selected on the Inquiry tab in Work Ticket Entry/Inquiry. LE displays in the Status field for labor transactions created from Labor Entry or the Labor Register/Update.

Step No	Trans Date	Employee No	Employee Name	Dept	Source	Hours	Earnings Code	Activity Code	Work Cent
000020	7/9/2019	11-0000100	JERRY A. THOMAS	00	LE	1.00	000001	00002	CAB

This feature is documented under reference ID 14490.

Work Ticket Printing

Bar code formulas for the work ticket number are now available on the crystal report. This feature is documented under reference ID 14735.

Purchase Order

The following changes were made in the Purchase Order module.

Purchase Order Entry

When the Include Open W/T Materials as Inventory Demand check box in Production Management Options is selected and materials are added to an open work ticket using the Purchaser Order Entry work ticket linking feature, the required value for materials assigned to the open work ticket is recorded as an inventory demand. The Req for W/T field in Item Maintenance includes the quantity required for work ticket materials on open work tickets.

Purchase order items cannot be linked to work tickets when the Include Open W/T Materials as Inventory Demand checkbox in Production Management Options is not selected. In this situation, purchase order items can only be linked to released work tickets.

This feature is documented under reference ID 15008.