



sage Production
Management

Sage Production Management 2019.4

Installation Guide

Version 6.10.4.0.0

December 2020

© Copyright 2020 All rights reserved. Production Management is a trademark of Scanco Software, LLC. Sage, the Sage logos, and the Sage product and service names mentioned herein are registered trademarks or trademarks of Sage Software, Inc., or its affiliated entities. All other trademarks are the property of their respective owners. The contents herein are summary in nature and subject to change without notification from Scanco Software, LLC. Scanco Software, LLC, accepts no responsibility for inadvertent errors or omissions.

Scanco Software, LLC
1000 N Tamiami Trail
Suite 201
Nokomis, FL 34275

Contents

Introduction to Sage Production Management 4

About this Guide 4

Important Information 4

Required Sage 100 Modules 5

Sage Production Management Pre-Installation Checklist 5

Sage Production Management 6.10.4.0.0 Installation Checklists 7

New Installation of Sage 100 with Sage Production Management 7

Upgrading Sage 100 with a New Installation of Production Management 8

Upgrading Sage 100 2019 and Production Management 9

Installing Sage Production Management 10

How to Install Sage Production Management 10

Activating Sage Production Management 14

Creating Company Data Files for Required Sage 100 Modules 15

Registering Sage Production Management 16

How to Obtain Sage Production Management Registration 16

How to Register Sage Production Management 17

Sage Production Management Hot Fixes 18

How to Install Sage Production Management Hot Fixes 18

Installing Online Help Files when Migrating to Version 6.10.4.0.0 – 20

Migrating to Sage Production Management 6.10.4.0.0 – 20

Migration Overview 20

Migration Steps 21

Sage Production Management Setup Wizard 22

Converting Work Order Data to Sage Production Management 24

Accessing Production Management without Installing Scanco Multi-Bin for Sage Production Management 25

Scanco Manufacturing Automation, In Transit, Scheduled Bill of Materials and Advanced Landed Cost 26

How to Uninstall Scanco Enhancement Modules 26

About Production Management 26

Introduction to Sage Production Management

Sage Production Management gives discrete make to stock manufacturers and fabricators the tools they need to achieve visibility into their entire production process. By centralizing the production process in a way that is tightly integrated with Sage 100, assemblers, manufacturers, and fabricators always know their costs, the status of items, and the material quantities required to meet demand.

About this Guide







This guide provides the information necessary for installing Sage Production Management.

Important Information

Read this guide completely before installing Sage Production Management version 6.10.4.0.0. The Sage Production Management 6.10.4.0.0 installation includes Sage Production Management and Sage 100 Standard, Advanced or Premium modified programs. Before installing Sage Production Management 6.10.4.0.0, install and register Sage 100 Standard, Sage 100 Advanced or Sage 100 Premium 2019 with Product Update 4.

Please refer to the Sage 100 Installation and System Administrator's Guide for information on installing Sage 100 Standard, Sage 100 Advanced or Sage 100 Premium and Sage 100 2019 Product Update 4.

Please refer to the Scanco Multi-Bin for Production Management Installation and What's New guides for information on Scanco Multi-Bin for Production Management. Scanco Multi-Bin for Production Management must be installed after installing Sage Production Management in order to utilize Scanco Multi-Bin for Production Management features.

-  **Warning:** Install Sage Production Management 6.10.4.0.0 into a parallel test Sage 100 environment. Performing a test upgrade or a test new install allows you to resolve issues that may occur during the live upgrade or live new install, reducing downtime and allows you to get a rough estimate of how long the upgrade process will take. Refer to the [Sage Knowledgebase article ID 101266](#) for more information. As not noted in the Sage Knowledgebase article before step 20, third party products must be re-installed after a migration.
-  **Warning:** Sage Production Management 6.10.4.0.0 may not be compatible with non-Scanco third party products. If you use third-party products that integrate with your Sage product, check with the vendor of your third-party product to ensure their product is fully compatible with this release. If you integrate with other Sage products, check with your business partner or Sage to ensure that these components are compatible.
-  **Warning:** When Scanco Multi-Bin exists in Sage 100 prior to installing Sage Production Management, Scanco Multi-Bin 6.10290 for Sage Production Management 6.10.4.0.0 must be installed and activated after installing Sage Production Management and before processing in Sage 100. Refer to page 25.
-  **Warning:** Scanco Multi-Bin On The Water may not be registered when Sage Production Management 6.10.4.0.0 are installed. Refer to page 12.
-  **Warning:** Scanco Manufacturing Automation, Scanco In Transit, Scanco Scheduled Bill of Materials and Scanco Advanced Landed Cost must be uninstalled and new registration keys that do not contain Scanco Manufacturing Automation, Scanco In Transit, Scanco Scheduled Bill of Materials and Scanco Advanced Landed Cost must be obtained and activated before installing Sage Production Management 6.10.4.0.0 and Scanco Multi-Bin 6.10290 for Sage Production Management 6.10.4.0.0. Refer to page 26.
-  **Note:** Please contact your authorized Sage Production Management partner or the Sage Support department at 866-996-7243 or <https://customers.sagenorthamerica.com> for assistance.

Required Sage 100 Modules

The following Sage 100 modules are required to be installed and activated in order to use Sage Production Management.

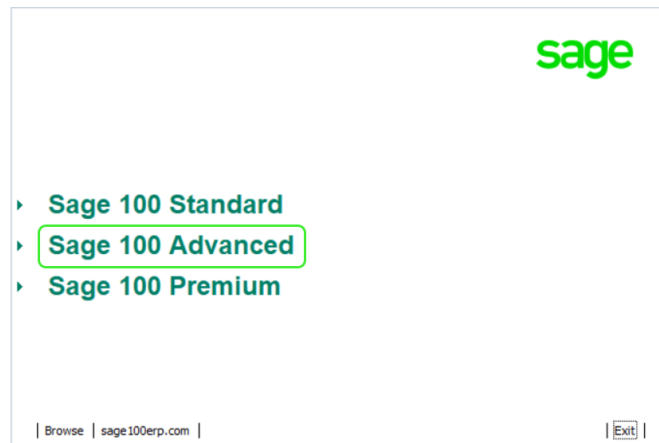
- Library Master
- Common Information
- General Ledger
- Inventory Management

Sage Production Management Pre-Installation Checklist

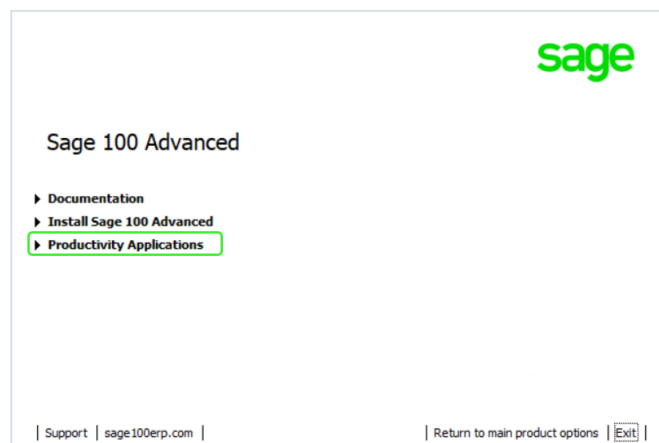
Complete the following pre-installation checklist prior to installing Sage Production Management 6.10.4.0.0 to ensure a successful installation.

- ❑ Do **not** install Sage Production Management 6.10.4.0.0 when custom modifications exist on Sage modified modules. Custom modifications must be retrofitted to the current Sage 100 version. Please contact your Sage or Sage Production Management partner for information on how to obtain a quote for custom modifications to be retrofitted to Sage 100 2019 with Sage Production Management 6.10.4.0.0.
- ❑ Do **not** install Sage Production Management 6.10.4.0.0 when extended solutions or third-party products are installed on the Sage 100 system. Please contact your Sage Production Management partner or the Sage Support department at 866-996-7243 or <https://customers.sagenorthamerica.com> for information on evaluating extended solutions or third-party software.
- ❑ Confirm that the Sage 100 installed version is 6.10.4.0 for the Sage 100 Standard, Sage 100 Advanced or Sage 100 Premium system. Access Help menu > About Sage to review the currently installed Sage 100 version. To review additional information on the currently installed Sage 100 system in the Sage 100 System Information window, select File menu > Run. Type *info in the Program field. Select the OK button.
- ❑ Confirm that Scanco Manufacturing Automation, Scanco In Transit, Scanco Scheduled Bill of Materials and/or Scanco Advanced Landed Cost are uninstalled and a new registration file not containing a registration number for these Scanco enhancement modules is activated in Sage 100. Refer to page 26 for information on how to uninstall and unregister Scanco Manufacturing Automation, Scanco In Transit, Scanco Scheduled Bill of Materials and Scanco Advanced Landed Cost.
- ❑ Backup the entire Sage 100 Standard, Sage 100 Advanced or Sage 100 Premium system, including programs and data files, after all data entry files are updated, and before installing Sage Production Management 6.10.4.0.0.
- ❑ Download the Sage Production Management 6.10.4.0.0 installation file and specify registration information from <http://info.scanco.com/prod-mgmt-downloads> The Sage Production Management downloads page can be accessed from the Sage 100 2019 installation wizard

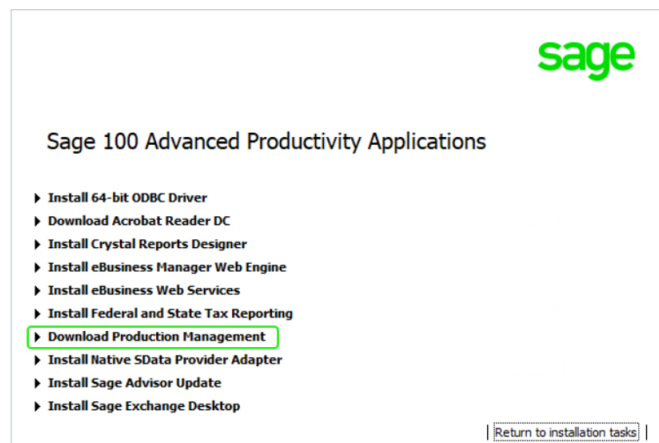
1. From the Sage 100 2019 installation Autorun screen, click a version of Sage 100.



2. From the Installation Tasks menu, click Productivity Applications.



3. Click Do Production Management to access the Sage Production Management downloads page.



Sage Production Management 6.10.4.0.0 Installation Checklists

New Installation of Sage 100 with Sage Production Management

- ❑ Complete the Sage Production Management 6.10.4.0.0 pre-installation checklist.
- ❑ Install Sage 100 2019. Refer to the Sage 100 2019 Installation and System Administrator's Guide.
- ❑ Install Product Update 4 for Sage 100 2019.
- ❑ Run the Sage 100 workstation setup process on all applicable workstations. Refer to the Sage 100 2019 Installation and System Administrator's Guide.
- ❑ Install Sage Production Management 6.10.4.0.0. Refer to the Installing Sage Production Management section on page 10.
- ❑ If hot fixes are available on the Sage Production Management Downloads page for Sage Production Management version 6.10.4.0.0, install Sage Production Management 6.10.4.0.0 hot fixes. Refer to the Sage Production Management Hot Fixes section on page 18.
- ❑ Activate the required and optional Sage 100 modules and the Sage Production Management module from Library Master Main menu > Company Information. Refer to the Activating Sage Production Management section on page 14.
- ❑ Create and set up company data files for required and optional Sage 100 modules that integrate with Sage Production Management. Refer to the Creating Company Data Files for Sage 100 Modules section on page 15.
- ❑ Run the data conversion process from Library Master Main menu > Company Information.
- ❑ Define role security for Sage Production Management from Library Master Main > Role Maintenance.
- ❑ Register Sage Production Management 6.10.4.0.0 from Library Master Setup > Scanco Product Registration. Refer to the Registering Sage Production Management section on page 16.
- ❑ Verify the Sage 100 and Sage Production Management versions by accessing Production Management Setup > About Production Management. Refer to the About Production Management section on page 20.

Upgrading Sage 100 with a New Installation of Production Management

- ❑ Complete the Sage Production Management 6.10.4.0.0 pre-installation checklist.
- ❑ Install Sage 100 2019. Refer to the Sage 100 2019 Installation and System Administrator's Guide.
- ❑ Install Sage 100 2019 Product Update 4. Refer to the Sage 100 2019 Customer Upgrade Guide and the Sage 100 2019 Upgrade Checklist.
- ❑ Run the Sage 100 workstation setup process on all applicable workstations. Refer to the Sage 100 2019 Installation and System Administrator's Guide.
- ❑ Migrate and convert Sage 100 data to 2019 version 6.10.4.0. Refer to the Sage 100 2019 Installation and System Administrator's Guide.
- ❑ Install Sage Production Management 6.10.4.0.0. Refer to the Installing Sage Production Management section on page 10.
- ❑ If hot fixes are available on the Sage Production Management Downloads page for Sage Production Management version 6.10.4.0.0, install Sage Production Management 6.10.4.0.0 hot fixes. Refer to the Sage Production Management Hot Fixes section on page 18.
- ❑ Back up all company data files before conducting the company conversion process.
- ❑ Activate the required and optional Sage 100 modules, if not already activated, and the Sage Production Management module from Library Master Main menu > Company Information. Refer to the Activating Sage Production Management section on page 14.
- ❑ Create and set up company data files for required and optional Sage 100 modules that integrate with Sage Production Management. Refer to the Creating Company Data Files for Sage Modules section on page 15.
- ❑ Run the data conversion process from Library Master Main menu > Company Information.
- ❑ Define role security for Sage Production Management from Library Master Main > Role Maintenance.
- ❑ Register Sage Production Management 6.10.4.0.0 from Library Master Setup > Scanco Product Registration. Refer to the Registering Sage Production Management section on page 16.
- ❑ Verify the Sage 100 and Sage Production Management versions by accessing Production Management Setup > About Production Management. Refer to the About Production Management section on page 20.
- ❑ Access the Custom Office Utilities Menu and run the update customized panels by selecting Custom Office Utilities menu > Update Customized Panels to Current Level. Review the placement of all user-defined fields. Refer to the Sage 100 2019 Customer Upgrade Guide and the Sage 100 2019 Upgrade Checklist.
- ❑ Reset all grids.
- ❑ Set up Production Management options using the Production Management Setup Wizard. Access the setup wizard from Production Management > Setup > Production Management Options.

Upgrading Sage 100 2019 and Production Management

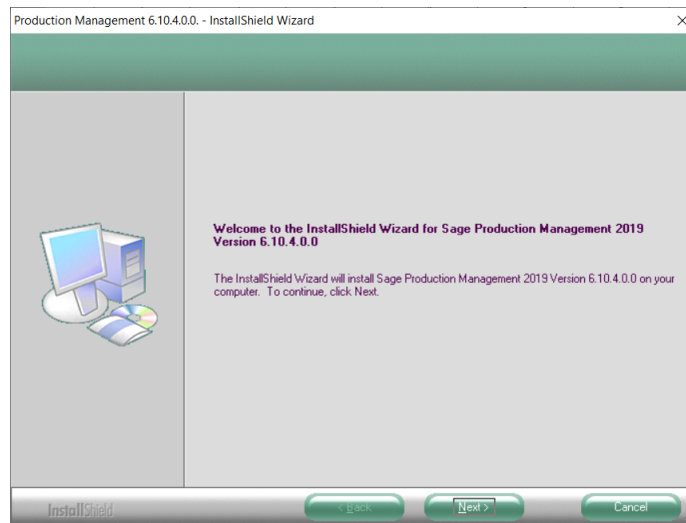
- ❑ Complete the Sage Production Management 6.10.4.0.0 pre-installation checklist.
- ❑ Install Sage 100 2019 Product Update 4. Refer to the Sage 100 2019 Customer Upgrade Guide and the Sage 100 2019 Upgrade Checklist.
- ❑ Install Sage Production Management 6.10.4.0.0. Refer to the Installing Sage Production Management section on page 10.
- ❑ If hot fixes are available on the Sage Production Management Downloads page for Sage Production Management version 6.10.4.0.0, install Sage Production Management 6.10.4.0.0 hot fixes. Refer to the Sage Production Management Hot Fixes section on page 18.
- ❑ Back up all company data files before proceeding to the company conversion process.
- ❑ Run the data conversion process from Library Master > Company Information.
- ❑ Verify the Sage 100 and Sage Production Management versions by accessing Production Management Setup > About Production Management. The Sage 100 version should display as 6.10.4.0 and the Sage Production Management version should display as 6.10.4.0.0. Refer to the About Production Management section on page 20.
- ❑ Access the Custom Office Utilities Menu and run the update customized panels by selecting Custom Office Utilities menu > Update Customized Panels to Current Level. Review the placement of all user-defined fields. Refer to the Sage 100 2019 Customer Upgrade Guide and the Sage 100 2019 Upgrade Checklist.
- ❑ Reset all grids.

Installing Sage Production Management

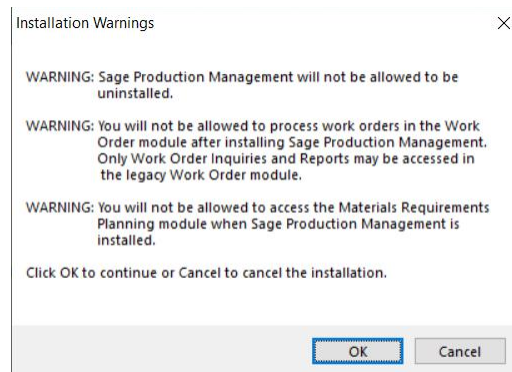
Conduct the following steps after Sage 100 2019 and Product Update 4 for Sage 100 2019 are installed successfully.




How to Install Sage Production Management

1. Download the Production_Management_2019_4_0.exe file from the Sage Production Management Downloads page at <http://info.scanco.com/prod-mgmt-downloads>.
2. Right click on the Sage Production Management 6.10.4.0.0 executable file.
3. Select Run as administrator.

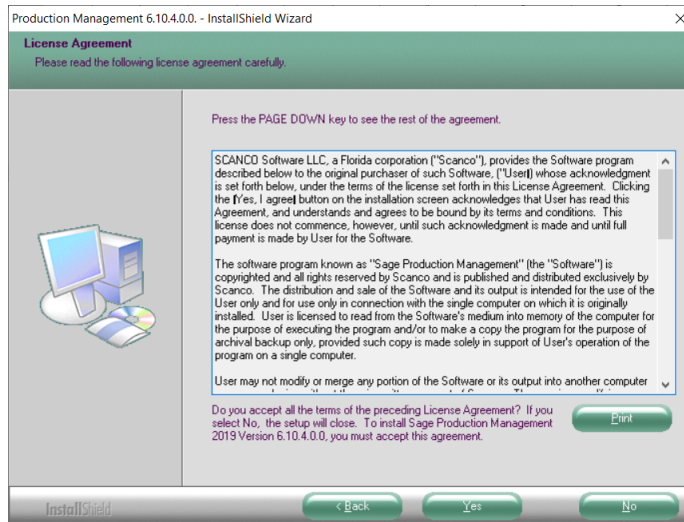


4. Select the Next button from the Sage Production Management Welcome window.
5. Review the installation warning messages.

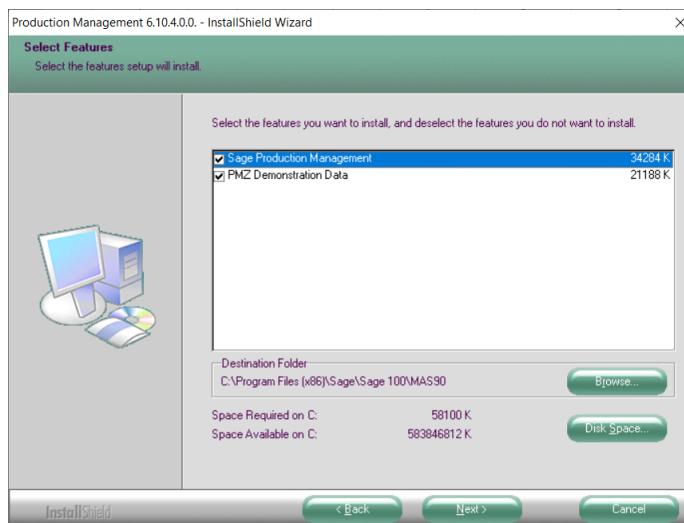


-  **Warning:** Sage Production Management will not be allowed to be uninstalled.
-  **Warning:** You will not be allowed to process work orders in the Work Order module after installing Sage Production Management. Only Work Order Inquires and Reports may be accessed in the legacy Work Order module.
-  **Warning:** You will not be allowed to access the Materials Requirements Planning module when Sage Production Management is installed.

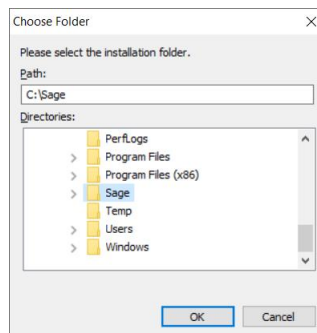
6. Select OK to continue the installation process or Cancel to not install Sage Production Management.
7. Review the Sage Production Management License Agreement.



8. Select the Yes button to agree to the Sage Production Management License Agreement and to continue with the Sage Production Management 6.10.4.0.0 installation process.
9. Select the Sage Production Management check box to install Sage Production Management 6.10.4.0.0. Select the PMZ Demonstration Data check box to install Sage Production Management 6.10.4.0.0 demonstration data. Clear a check box to not install Sage Production Management 6.10.4.0.0 or the PMZ demonstration data.



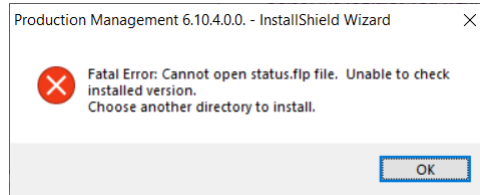
10. Accept the default location of Sage 100 or select the Browse button to specify the location of Sage 100. The Choose Folder window displays after the Browse button is selected.



Specify the location of Sage 100 in the Path field. Select the OK button to return to the Select Features window.

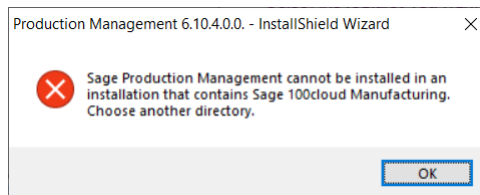
11. Select the Next button from the Select Features window. The installed version of Sage 100 Standard, Sage 100 Advanced or Sage 100 Premium is validated.

Warning: Sage Production Management 6.10.4.0.0 must be installed to the same location where Sage 100 Standard, Sage 100 Advanced or Sage 100 Premium is installed. When an invalid directory location is entered in the Destination Folder field found on the Select Features window, the following message displays.



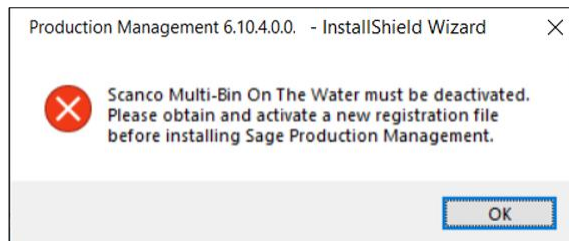
Select the OK button and modify the location where Sage 100 Standard, Sage 100 Advanced or Sage 100 Premium is installed.

Warning: Sage Production Management 6.10.4.0.0 may not be installed in the same location where Sage 100cloud Manufacturing is installed. The following message displays when the selected location contains Sage 100cloud Manufacturing.



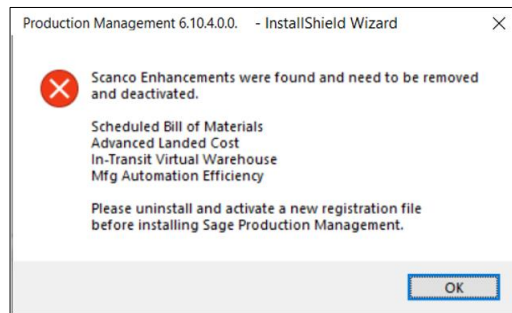
Select the OK button and then Cancel from the Select Features window.

Warning: Scanco Multi-Bin On The Water may not be registered when Sage Production Management is installed. The following message displays when the selected location contains Scanco Multi-Bin with Scanco Multi-Bin On The Water activated.



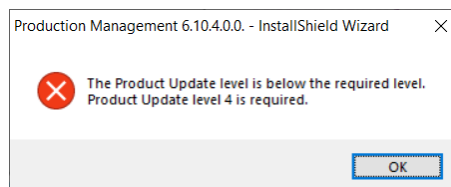
Select OK and cancel the Sage Production Management 6.10.4.0.0 installation process. A new Scanco Multi-Bin registration file that does not contain Scanco Multi-Bin On The Water must be obtained and activated in order to install Sage Production Management 6.10.4.0.0.

Warning: Scanco Manufacturing Automation, Scanco In Transit, Scanco Scheduled Bill of Materials and Scanco Advanced Landed Cost do not integrate and are not compatible with Sage Production Management. The following message displays when Scanco Manufacturing Automation, Scanco In Transit, Scanco Scheduled Bill of Materials and/or Scanco Advanced Landed Cost are installed and/or activated in Sage 100.

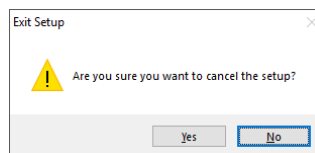


Select OK and cancel the Sage Production Management 6.10.4.0.0 installation process. Refer to page 26 for information on the steps to take when Scanco Manufacturing Automation, Scanco In Transit, Scanco Scheduled Bill of Materials and/or Scanco Advanced Landed Cost are installed in Sage 100.

Warning: When Sage 100 2019 with Product Update 4 version 6.10.4.0 has not been installed at the specified Sage 100 Standard, Sage 100 Advanced or Sage 100 Premium location, the following message displays.

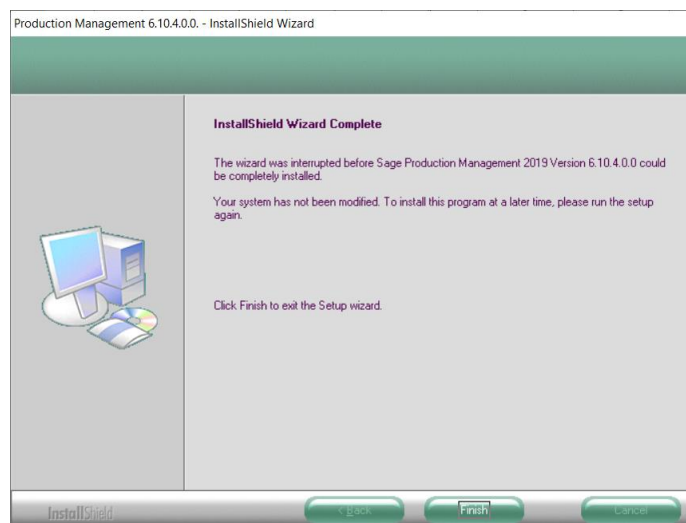


Select the OK button from the message. Select the Cancel button from the Select Features window. The following message displays.



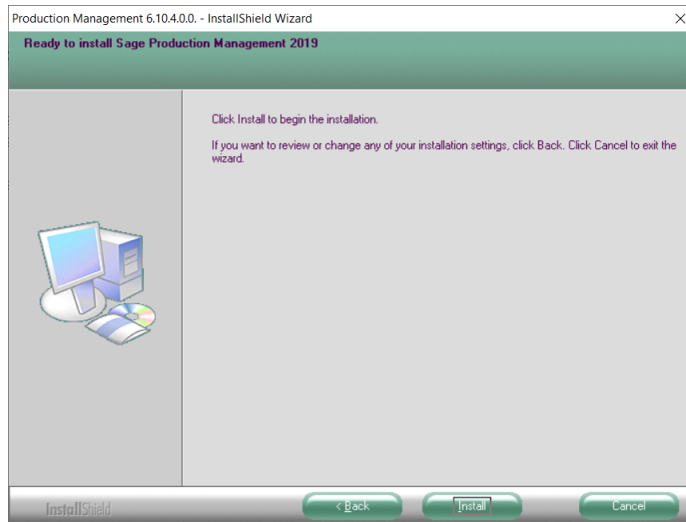
Select Yes in the message.

Select the Finish button from the InstallShield Wizard Complete window to cancel the Sage Production Management 6.10.4.0.0 installation process.



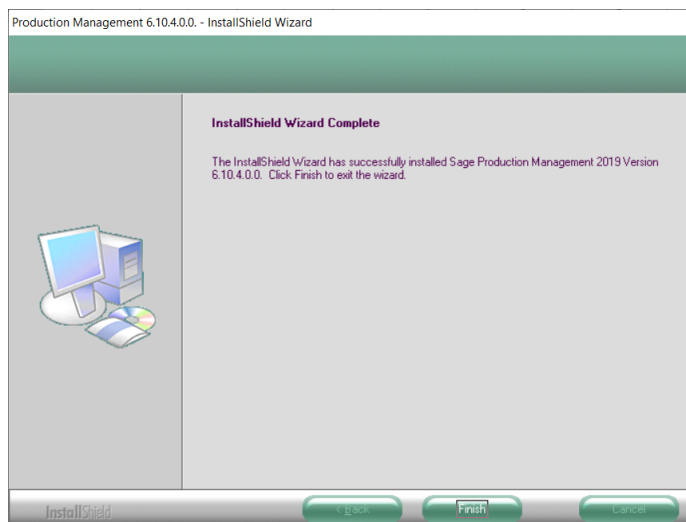
Install Sage 100 2019 Product Update 4 and then install Sage Production Management 6.10.4.0.0.

12. Select the Install button from the following window to install Sage Production Management.



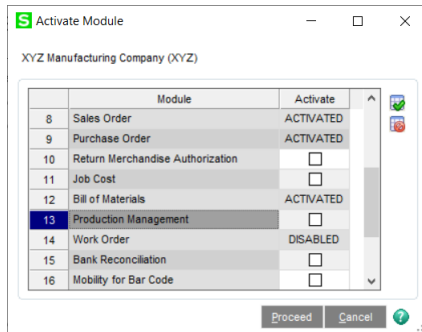
Select the Back button to return to the Select Features window. Select the Cancel button, select Yes in the message *Are you sure you want to cancel the setup?* and the Finish button from the InstallShield Wizard Complete window to cancel the Sage Production Management 6.10.4.0.0 installation process.

13. Select the Finish button from the InstallShield Wizard Complete window to complete the Sage Production Management 6.10.4.0.0 installation process.



Activating Sage Production Management

1. Access Library Master Main menu > Company Maintenance.
2. Enter the appropriate company code in the Company Code field.
3. Select the Activate button.
4. Select the Production Management Activate check box.

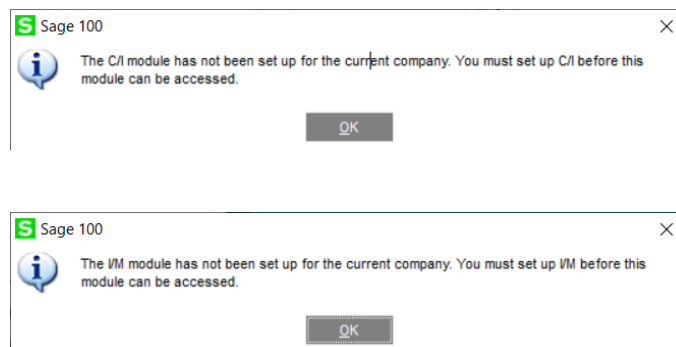


5. Select the Proceed button.

Creating Company Data Files for Required Sage 100 Modules

Company data files must be created prior to accessing Sage Production Management tasks after Sage Production Management is installed on an existing Sage 100 Standard, Sage 100 Advanced or Sage 100 Premium installation or after a new company has been created. Some Sage 100 modules are required to be installed in order to utilize Sage Production Management. General Ledger, Common Information, and Inventory Management data files must be created prior to creating Sage Production Management company data files.

The following messages display when a Sage Production Management task is accessed before company data files are created for the Sage 100 Common Information or Inventory Management modules.



Click OK in the message. Access any Sage 100 Common Information or Inventory Management module task to access the Setup Wizard. Complete the Common Information or Inventory Management module setup process and then access Production Management Options to set up Sage Production Management.

Registering Sage Production Management

How to Obtain Sage Production Management Registration

1. Access the Production Management Downloads page <http://info.scanco.com/prod-mgmt-downloads>

SAGE PRODUCTION MANAGEMENT DOWNLOADS
Download the Latest Software Versions, Install Guides, and Hot Fixes.

- Sage Production Management
- Sage Inventory Requirements Planning
- Sage Shop Floor Mobile App
- Scanco Multi-Bin for Sage Production Management
- Mobility for Sage Production Management
- Scanco MFG100 Mobile App

REQUEST REGISTRATION FILE

Request Registration File for Sage Production Management, Sage Inventory Requirements Planning, Scanco Multi-Bin for Sage Production Management, Mobility for Sage Production Management, and Sage Shop Floor Mobile App.

Please Note:

- Please allow 1-3 business days for processing registration file requests.
- The requested registration file is sent to the email specified in the Primary Contact Email field on the registration file request form.
- End-user information is verified with Sage prior to processing a registration file.

REGISTRATION FILE REQUEST

2. Scroll down and click on Registration File Request.

REGISTRATION FILE REQUEST FORM

Please use the form below to request your Sage Production Management, Sage Inventory Requirements Planning, Scanco Multi-Bin for Sage Production Management, Mobility for Sage Production Management, and Sage Shop Floor Mobile App registration file.

NOTE: If you are a reseller requesting a registration file for an end-user, please complete all fields with the end-users' information.

COMPANY NAME*

PHONE NUMBER

COMPANY CONTACT NAME*

PRIMARY CONTACT EMAIL* (Key File Will Be Sent Here)

☐ CHECK THE BOX IF YOU ARE A SAGE RESELLER

IF YOU ARE AN END-USER, ARE YOU WORKING WITH A SAGE RESELLER?

☐ YES

☐ NO


IF YES, WHAT IS THE NAME OF YOUR SAGE RESELLER?

3. Enter the required information in the Sage Production Management Registration form. Fields noted with an asterisk (*) are required.
4. Select the Sage Production Management – Make to Stock check box. Select the check boxes for Sage Inventory Requirements Planning, Scanco Multi-Bin for Production Management, Sage Shop Floor User/Devices, Mobility for Sage Production Management, and/or Dynamic Off when these modules have been purchased.

WHICH MODULES DO YOU WISH TO REGISTER?


- ☒ SAGE PRODUCTION MANAGEMENT - MAKE TO STOCK
- ☐ SAGE INVENTORY REQUIREMENTS PLANNING
- ☐ SCANCO MULTI-BIN FOR PRODUCTION MANAGEMENT
- ☐ SAGE SHOP FLOOR USERS/DEVICES
- ☐ MOBILITY FOR SAGE PRODUCTION MANAGEMENT
- ☐ DYNAMIC OFF

5. Select the Submit button.

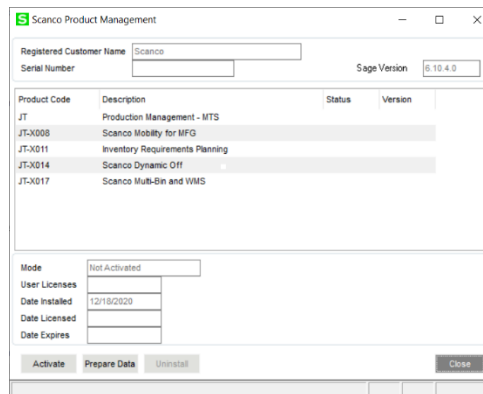
 **Note:** Please allow 1-3 business days for processing Sage Production Management registration requests. The Sage Production Management registration file is sent to the email specified in the Primary Contact Email field on the Sage Production Management Registration form.

How to Register Sage Production Management

1. When a license registration file is received via email, place the registration text file at ...\\MAS90\\Scanco in the location where Sage 100 is installed.

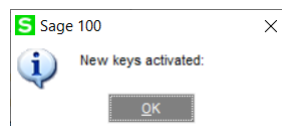
 **Note:** Submit registration information before downloading from the Sage Production Management Downloads page and installing Sage Production Management.

2. Access Library Master Setup menu > Scanco Product Registration.



Product Code	Description	Status	Version
JT	Production Management - MTS		
JT-X008	Scanco Mobility for MFG		
JT-X011	Inventory Requirements Planning		
JT-X014	Scanco Dynamic Off		
JT-X017	Scanco Multi-Bin and WMS		

3. Verify the correct Sage 100 Serial number and User Licenses displays.
4. Select the Activate button.
5. Select OK in the *New keys activated.* message.



6. Verify Activated displays in the Status field for the J/T Production Management – MTS product code record.

Product Code	Description	Status	Version
JT	Production Management - MTS	Activated	
JT-X008	Scanco Mobility for MFG		
JT-X011	Inventory Requirements Planning		
JT-X014	Scanco Dynamic Off		
JT-X017	Scanco Multi-Bin and WMS		

7. Select the Close button.

Sage Production Management Hot Fixes

Occasionally hot fixes are required to be installed after installing Sage Production Management. Access Production Management hot fixes from the Sage Production Management Downloads page <http://info.scanco.com/prod-mgmt-downloads>

How to Install Sage Production Management Hot Fixes

1. Access the Sage Production Management Downloads page <http://info.scanco.com/prod-mgmt-downloads>
2. Click on the Production Management menu option.
3. Click on Hot Fixes from the Production Management menu.

4. Review the available hot fixes for Sage Production Management for the currently installed version.

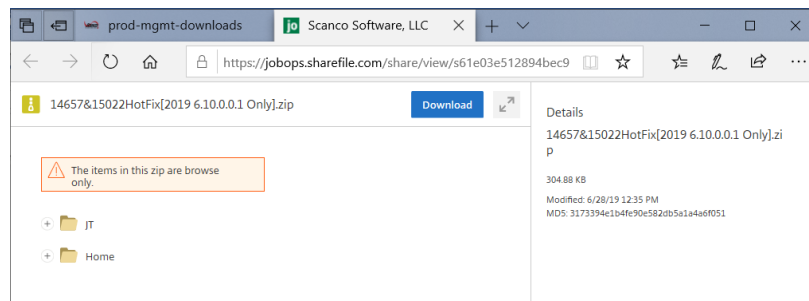
SAGE PRODUCTION MANAGEMENT HOT FIXES

ID	Description	Version	Release Date
16619	Labor Register Update: Batch Processing = Y - All Labor entry records moved to history when updating a single batch, sets subsequent batch number to Interrupted	2019.2.1 (Version 6.10.2.0.1)	Feb 7, 2020
15748	Convert Work Order Data: Work order template text converted incorrectly to TemplateText in JT_Template.M4T. Receive Record has been changed by another user and the changes will not be saved. Message when modifying a value and save the template.	2019.2.0 (Version 6.10.2.0.0)	Oct 29, 2019
15749	Convert Work Order Data: Set Labor and Materials Scaling Quantity to 1 when Labor/Materials Scaling checkbox is Y.	2019.2.0 (Version 6.10.2.0.0)	Oct 29, 2019



Note: Hot fixes are version specific. Only install hot fixes for the current Sage Production Management version.

- Click on a hot fix link to be directed to the download file.

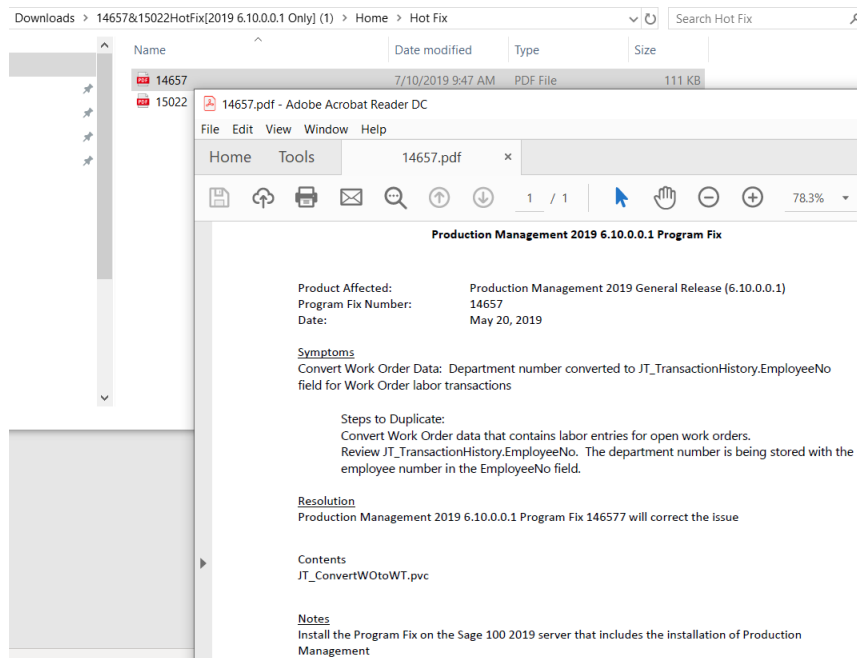


- Click on the Download button.
- Specify the location to download the hot fix.
- Extract the hot fix file to the MAS90 directory where Sage 100 and Production Management are installed.



Warning: If the hot fix zip file is extracted to a location other than the MAS90 directory, the hot fix programs must be copied to the file location specified in the hot fix zip file.

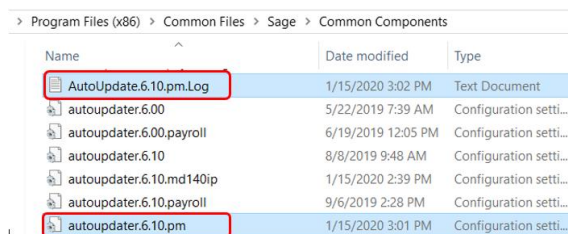
- Select to replace the files in the destination if the hot file was extracted to the MAS90 directory where Sage 100 and Production Management are installed. The hot fix program is now located in the correct directory in the Sage 100 and Production Management installation.
- Review the document(s) included in the hot fix download file. Descriptions and instructions are included in this documentation.



Installing Online Help Files when Migrating to Version 6.10.4.0.0

When migrating to Sage Production Management 6.10.4.0.0, the following steps must be conducted to install the file layouts and updated online help files.

- Before installing Production Management 6.10.4.0.0, remove the following two files from \Program Files (x86)\Common Files\Sage\Common Components
 - AutoUpdate.6.10.pm.Log.txt
 - Autoupdater.6.10.pm.ini




- Install Production Management 6.10.4.0.0 according to the installation instructions in this guide.
- Access Sage 100 to initiate the Sage workstation synchronization. The workstation synchronization process will then install the updated online help and file layouts files.

Migrating to Sage Production Management 6.10.4.0.0


Migration Overview

The key to successfully migrating Sage 100 installations is that all modules installed on the Sage 100 migration source installation must also be installed on the Sage 100 migration target installation.

The Sage 100 Work Order, Material Requirements Planning and eBusiness Manager modules are not supported on the Sage 100 Premium platform. Removal of these modules is required from the Sage 100 migration source installation prior to migration. This includes removing the module in each company you wish to migrate to the Sage 100 migration target installation and removing the module from the source installation.


 **Warning:** The Sage Production Management Convert Work Order Data utility currently does not convert Work Order history. Since removal of Work Order from the Sage 100 migration source installation is required before migrating to a Sage 100 Premium platform, in order to have access to this data after migration, it is recommended migrating to a Sage 100 Premium platform be deferred until this is available.

Since Sage Production Management can only be installed on Sage 100 2019, migration of Sage 100 2018 source installation to a Sage 100 2019 target installation must be accomplished **before** installing Production Management on the Sage 100 2019 target installation.

 **Note:** Please contact your authorized Sage Production Management partner or the Sage Support department at 866-996-7243 or <https://customers.sagenorthamerica.com> for assistance.

Migration Steps

1. Perform standard migration of a Sage 100 2018 (or earlier) source installation to non-premium Sage 100 2019 target installation (*without Production Management installed*). This step includes installing Sage 100 2019 Product Update 4. Refer to the Sage 100 2019 Installation Guide for steps on how to perform a migration.
2. Install Sage Production Management on Sage 100 2019 target installation.
3. Access the Scanco Product Registration from the Library Master Setup Menu.
4. Click the Activate button to register Sage Production Management 6.10.4.0.0.
5. Access Company Maintenance from the Library Master Main Menu.
6. Select a Company Code.
7. Click the Convert button.
8. Select the Convert Data for All Companies check box.
9. Click the Proceed button.
10. Access Company Maintenance and activate Production Management for applicable companies.
11. Access Role Maintenance from the Library Master Main Menu to define Sage Production Management user security for each role.
12. For each company with Sage Production Management activated, access Production Management Setup menu > Production Management Options to access the Sage Production Management Setup Wizard.
13. Review and assign values to all fields in Production Management Options.

 **Warning:** Field values assigned in Production Management Options are retained during the Convert Work Order Data process and are not overwritten by values assigned in Work Order Options. Since Production Management Options present many different parameters, it is important to review and assign all fields prior to running the Convert Work Order Data process.

14. Access Production Management Utilities menu > Convert Work Order Data.
15. Run the Convert Work Order Data utility for each company with Production Management activated that includes Work Order data to be converted to Production Management.
16. Remove Sage 100 Work Order, Material Requirements Planning and eBusiness Manager modules from companies and non-Premium Sage 2019 installation with Production Management.
17. Create and setup Sage 100 2019 Premium target installation including the installation of Production Management.
18. Activate the Sage Production Management module.
19. The initial migration process will replace company, user and role data on the Premium target installation with the data from the source installation.
20. Migrate Sage 100 2019 non-Premium source installation to Sage 100 2019 Premium target installation.

21. Perform the conversion process for all companies on the target installation to transfer data from ProvideX tables to the SQL database.

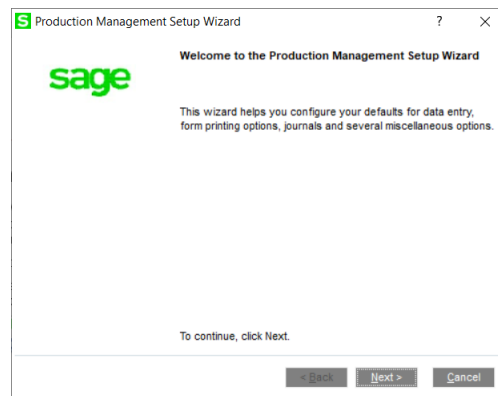
Sage Production Management Setup Wizard

The Sage Production Management module includes a Production Management Setup Wizard that must be performed to initiate the setup process.

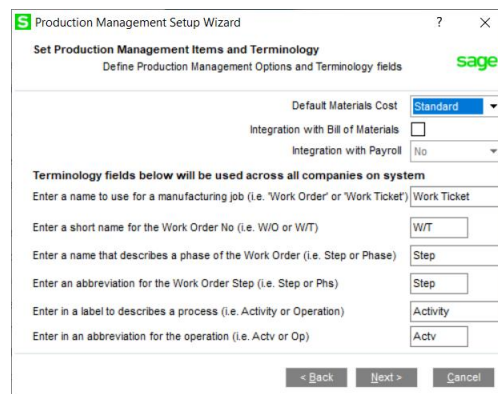
1. Access Production Management Setup > Production Management Options.
2. Select Yes in the message *The J/T module has not been set up for company ###. Do you want to set up the module now?*



3. Select Next from the Production Management Setup Wizard Welcome window.



4. Specify the default materials cost value, integration settings and terminology.



5. Select the Next button.
6. Specify the next automatic work ticket number and the batch processing settings for Work Ticket Transaction Entry and Labor Entry.

Production Management Setup Wizard

Define Data Entry Options
Define Production Management Entry options.

Enter the next automatic Work Ticket number: 000000000001

The batch entry feature allows you to create different sets of transactions that can be updated as a group. Batches can also assist in segregating data entry done by multiple users.

Do you want to enter transactions using batch entry? ☐

Do you want to enter labor transactions using batch entry? ☐

< Back Next > Cancel

7. Select the Next button.

8. Optionally, specify a default warehouse code for finished goods and materials. Specify to allow auto issues and backflush transactions. Select a default cost completion method.

Production Management Setup Wizard

Define Additional Entry Options
Define additional Production Management options.

Default Warehouse for Parent Item

Default Warehouse for Materials

Auto Issue Materials/Labor Transactions? ☐


Backflush Materials/Labor Transactions? ☐

Cost Completion Method: Actual

< Back Next > Cancel

9. Select the Next button.

10. Type a work ticket class and description. Assign the work in process, scrap, variance and special item inventory account for the work ticket class.

 **Note:** The work ticket class defined in this window is assigned the Default Make to Stock Work Ticket Class field in Production Management Options.

Production Management Setup Wizard

Define Default Work Ticket Class Information and Accounts
Set Work Ticket and default general ledger accounts to use for postings.

Work Ticket Class: STK

Description: Make to Stock

Select an account to use for general ledger postings for each of the following.

Work in Process	117-010-000	WP - Direct
Scrap Account	970-000-000	Scrap Account
Variance Account	965-000-600	Manufacturing Adjustments
Special Item Inventory	115-000-000	Inventory - Raw Material

< Back Next > Cancel

11. Select the Next button.

12. Review selected Production Management options from the Wizard Listing.

13. Select the Finish button.

Converting Work Order Data to Sage Production Management


Sage Work Order data can be converted into Production Management data by using the Sage Production Management Convert Work Order Data utility.


1. Complete all steps on the Upgrading Sage 100 with a New Installation of Production Management check list.
2. If migrating to Sage 100 Premium, review and complete the necessary steps from the Migrating to Sage Production Management 6.10.4.0.0 section on page 14.
3. Follow the steps defined in the Sage Production Management Setup Wizard section on page 22.
4. Review and assign values to all fields in Production Management Options.

Warning: Field values assigned in Production Management Options are retained during the Convert Work Order Data process and are not overwritten by values assigned in Work Order Options. Since Production Management Options present many different parameters, it is important to review and assign all fields prior to running the Convert Work Order Data process.

Note: A work ticket class must be assigned to the Default Make to Stock Work Ticket Class field in Production Management Options in order to run the Sage Production Management Convert Work Order Data utility.

5. From Work Ticket Class Maintenance, review information assigned to the default work ticket class created by the Sage Production Management Setup Wizard.

 **Note:** The default work ticket class assigned as the Default Make to Stock Work Ticket Class field in Production Management Options must exist in Work Ticket Class Maintenance in order to run the Sage Production Management Convert Work Order Data utility.

 **Warning:** Some parameter, such as General Ledger accounts and overhead settings assigned to a work ticket class in Work Ticket Class Maintenance cannot be changed after a work tickets is created from converted work orders.

6. Access Production Management Utility menu > Convert Work Order Data.

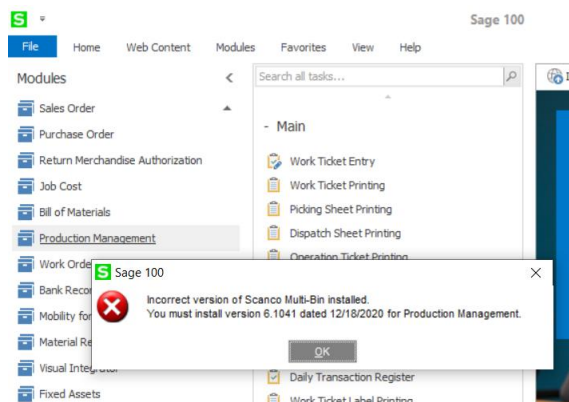
 **Warning:** The Sage Production Management Convert Work Order Data utility does not convert Work Order history.

7. Review messages in the task window.

- The message *Warning: Production Management data is active.* displays when Sage Production Management data has been created prior to converting Work Order data to Sage Production Management data. This includes settings specified in Production Management Options and defined work ticket classes in Work Ticket Class Maintenance.
 - The message *Invalid or missing default Work Ticket Class.* displays when a work ticket class is not assigned to the Default Make to Stock Work Ticket Class field in Production Management Options. A work ticket class must be assigned to the Default Make to Stock Work Ticket Class field in Production Management Options in order to run the Sage Production Management Convert Work Order Data utility.
 - The message *Missing Work Ticket Class record required to convert Company.* displays when the default work ticket class assigned to the Default Make to Stock Work Ticket Class field in Production Management Options does not exist in Work Ticket Class Maintenance.
8. Select the Proceed button when the *Warning: Production Management data is active.* displays. Select the Cancel button to close the Convert Work Order Data utility window in order to specify or create a default make to stock work ticket class.
9. Select OK to the message *Work Order to Production Management conversion completed.* after Work Order data is converted to Production Management data
10. After the Convert Work Order Data utility completes, review converted Work Order data in Sage Production Management tasks.

Accessing Production Management without Installing Scanco Multi-Bin for Sage Production Management

Scanco Multi-Bin for Sage Production Management must be installed after Sage Production Management in order to utilize Scanco Multi-Bin features. When Scanco Multi-Bin for Sage Production Management is not installed in Sage 100 containing Scanco Multi-Bin and Sage Production Management, the following message displays when a Sage Production Management menu task is selected.



Select the OK button to return to the menu. Exit out of Sage 100. Install Scanco Multi-Bin for Sage Production Management. Refer to the Scanco Multi-Bin for Sage Production Management Installation guide for more information.

Scanco Manufacturing Automation, In Transit, Scheduled Bill of Materials and Advanced Landed Cost

The following Scanco enhancement modules do not integrate and are not compatible with Sage Production Management 6.10.4.0.0 or Scanco Multi-Bin 6.10290 for Sage Production Management 6.10.4.0.0.

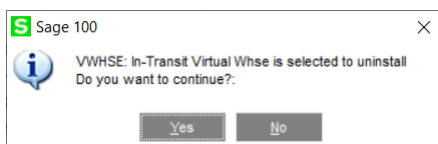
- Scanco Manufacturing Automation
- Scanco In Transit
- Scanco Scheduled Bill of Materials
- Scanco Advanced Landed Cost

The following steps must be taken prior to installing Sage Production Management 6.10.4.0.0.

1. Scanco Manufacturing Automation, Scanco In Transit, Scanco Scheduled Bill of Materials and Scanco Advanced Landed Cost must be uninstalled following the Scanco Manufacturing Automation, Scanco In Transit, Scanco Scheduled Bill of Materials or Scanco Advanced Landed Cost uninstall process.
2. A new registration file that does not contain Scanco Manufacturing Automation, Scanco In Transit, Scanco Scheduled Bill of Materials and/or Scanco Advanced Landed Cost must be obtained and activated in Sage 100.

How to Uninstall Scanco Enhancement Modules

1. Access Library Master > Setup > Scanco Product Registration
2. Click on the Scanco Enhancement product code record.
3. Select the Uninstall button.
4. Select Yes in the following message



5. Continue the uninstall process until Scanco Manufacturing Automation, Scanco In Transit, Scanco Scheduled Bill of Materials and/or Scanco Advanced Landed Cost Scanco enhancement modules are uninstalled.
6. Copy the new registration file that does not contain Scanco Manufacturing Automation, Scanco In Transit, Scanco Scheduled Bill of Materials and/or Scanco Advanced Landed Cost to ...\\MAS90_Scanco.
7. Select the Activate button from the Scanco Product Registration window.
8. Select the Close button.

About Production Management

Use the About Production Management window to review the current Sage 100 and Production Management version numbers. The information available in the About Production Management window is also used when contacting Sage Support.

Access this window from Production Management Setup menu > About Production Management.



Select the OK button to close the About Production Management window.