



sage Production
Management

Scanco Multi-Bin for Sage Production Management Installation Guide

Scanco Multi-Bin 6.10290 for Sage Production Management 6.10.2.0.2

April 2020

© Copyright 2020 All rights reserved. Production Management is a trademark of Scanco Software, LLC. Sage, the Sage logos, and the Sage product and service names mentioned herein are registered trademarks or trademarks of Sage Software, Inc., or its affiliated entities. All other trademarks are the property of their respective owners. The contents herein are summary in nature and subject to change without notification from Scanco Software, LLC. Scanco Software, LLC, accepts no responsibility for inadvertent errors or omissions.

Scanco Software, LLC
1000 N Tamiami Trail
Suite 201
Nokomis, FL 34275

Contents

Introduction to Scanco Multi-Bin for Sage Production Management 4

About this Guide 4

Important Information 4

Required Sage 100 Modules 5

Scanco Multi-Bin for Sage Production Management Pre-Installation Checklist 5

Scanco Multi-Bin 6.10290 for Sage Production Management 6.10.2.0.2 Installation Checklists 7

New Installation of Sage 100, Sage Production Management and Scanco Multi-Bin for Production Management 7

Upgrading Sage 100 with a New Installation of Production Management and Scanco Multi-Bin for Production Management 8

Upgrading Sage 100 and Production Management with a New Installation of Scanco Multi-Bin for Production Management 9

Upgrading Sage 100 and Scanco Multi-Bin to 2019 with a New Installation of Production Management and Scanco Multi-Bin for Production Management 10

Installing Scanco Multi-Bin for Sage Production Management 11

How to Install Scanco Multi-Bin for Sage Production Management 11

Registering Scanco Multi-Bin for Sage Production Management 15

How to Obtain Scanco Multi-Bin for Sage Production Management Registration 15

How to Register Scanco Multi-Bin for Sage Production Management 16

Scanco Multi-Bin for Sage Production Management Hot Fixes 18

How to Install Scanco Multi-Bin for Sage Production Management Hot Fixes 18

Preparing Scanco Multi-Bin for Sage Production Management Data 19

How to Prepare Scanco Multi-Bin for Sage Production Management Data 19

Converting Work Order Data to Sage Production Management 20

Accessing Production Management without Installing Scanco Multi-Bin for Sage Production Management 21

Scanco Manufacturing Automation, In Transit, Scheduled Bill of Materials and Advanced Landed Cost 22

How to Uninstall Scanco Enhancement Modules 22

About Production Management 22


Introduction to Scanco Multi-Bin for Sage Production Management

Sage Production Management gives discrete make to stock manufacturers and fabricators the tools they need to achieve visibility into their entire production process. By centralizing the production process in a way that is tightly integrated with Sage 100, assemblers, manufacturers, and fabricators always know their costs, the status of items, and the material quantities required to meet demand.

Scanco Multi-Bin with Sage Production Management provides the ability to track inventory movement in the manufacturing process by integrating Sage Production Management with Scanco Multi-Bin. Scanco Multi-Bin for Sage Production Management contains the Scanco Multi-Bin module plus modifications made to Scanco Multi-Bin for the Sage Production Management module. Sage Production Management must be installed prior to installing Scanco Multi-Bin for Sage Production Management.

About this Guide


This guide provides the information necessary for installing Scanco Multi-Bin 6.10290 for Sage Production Management 6.10.2.0.2.


 **Note:** Within this document *Scanco Multi-Bin* refers to the Scanco Multi-Bin product without Sage Production Management installed in Sage 100. *Scanco Multi-Bin for Sage Production Management* refers to Sage Production Management and the version of Scanco Multi-Bin for Sage Production Management installed in Sage 100.


Important Information


Read this guide completely before installing Scanco Multi-Bin 6.10290 for Sage Production Management 6.10.2.0.2. The Scanco Multi-Bin 6.10290 for Sage Production Management 6.10.2.0.2 installation includes Scanco Multi-Bin, Sage Production Management and some Sage 100 modified programs. Before installing Scanco Multi-Bin 6.10290 for Sage Production Management 6.10.2.0.2, install and register Sage 100 Standard, Sage 100 Advanced or Sage 100 Premium 2019 with Product Update 2 and Sage Production Management 6.10.2.0.2.


Refer to the Sage 100 Installation and System Administrator's Guide for information on installing Sage 100 Standard, Sage 100 Advanced or Sage 100 Premium and Sage 100 2019 Product Update 2. Refer to the Sage Production Management 6.10.2.0.2 Installation Guide on installing Sage Production Management 6.10.2.0.2.


 **Warning:** An installer specific for Sage Production Management must be used to install Scanco Multi-Bin 6.10290 for Sage Production Management 6.10.2.0.2. Do not install Scanco Multi-Bin when Sage Production Management is installed in Sage 100.

 **Warning:** When Scanco Multi-Bin exists in Sage 100 prior to installing Sage Production Management, Scanco Multi-Bin 6.10290 for Sage Production Management 6.10.2.0.2 must be installed and activated after installing Sage Production Management and before processing in Sage 100. Refer to Accessing Production Management without Installing Scanco Multi-Bin for Sage Production Management on page 21.


 **Warning:** Work Order data containing Scanco Multi-Bin data may not be converted to Sage Production Management 6.10.2.0.2 with Scanco Multi-Bin 6.10290 for Sage Production Management 6.10.2.0.2. This data conversion feature will be available in a future release. Refer to page 19.

 **Warning:** Install Scanco Multi-Bin 6.10290 for Sage Production Management 6.10.2.0.2 into a parallel test Sage 100 environment. Performing a test upgrade or a test new install allows issues to be resolved that may occur during the live upgrade or live new install, reducing downtime and an estimate to be established on how long the upgrade process will take. Refer to the [Sage Knowledgebase article ID 101266](#) for more information. As not noted in the Sage Knowledgebase article before step 20, third party products must be re-installed after a migration.

 **Warning:** Scanco Multi-Bin 6.10290 for Sage Production Management 6.10.2.0.2 may not be compatible with non-Scanco third party products. If third-party products that integrate with Sage products are used, check with the vendor of the third-party product to ensure their product is fully compatible with this release. If other Sage products are integrated, check with a business partner or Sage to ensure that these components are compatible.

 **Warning:** Scanco Multi-Bin On The Water may not be registered when Sage Production Management 6.10.2.0.2 and Scanco Multi-Bin 6.10290 for Sage Production Management 6.10.2.0.2 are installed. Refer to page 14.


 **Warning:** Scanco Manufacturing Automation, Scanco In Transit, Scanco Scheduled Bill of Materials and Scanco Advanced Landed Cost must be uninstalled and new registration keys that do not contain Scanco Manufacturing Automation, Scanco In Transit, Scanco Scheduled Bill of Materials and Scanco Advanced Landed Cost must be obtained and activated before installing Sage Production Management 6.10.2.0.2 and Scanco Multi-Bin 6.10290 for Sage Production Management 6.10.2.0.2. Refer to page 22.

 **Note:** Please contact your authorized Sage Production Management partner or the Sage Support department at 866-996-7243 or <https://customers.sagenorthamerica.com> for assistance with Sage Production Management. Please contact Scanco Support at support@scanco.com for assistance with Scanco Multi-Bin for Sage Production Management.

Required Sage 100 Modules

The following Sage 100 modules are required to be installed and activated in order to use Scanco Multi-Bin 6.10290 for Sage Production Management version 6.10.2.0.2.

- Library Master
- Common Information
- General Ledger
- Inventory Management
- Production Management

 **Warning:** Scanco Multi-Bin 6.10290 for Sage Production Management 6.10.2.0.2 may not be installed into a Sage 100 install that contains Sage Operations Management, previously known as Sage 100cloud Manufacturing or JobOps.

Scanco Multi-Bin for Sage Production Management Pre-Installation Checklist

Complete the following pre-installation checklist prior to installing Scanco Multi-Bin 6.10290 for Sage Production Management 6.10.2.0.2 to ensure a successful installation.

- ☐ Do **not** install Scanco Multi-Bin 6.10290 for Sage Production Management 6.10.2.0.2 when custom modifications exist on Sage or Scanco modified modules or products. Custom modifications must be retrofitted to the current Sage 100 version. Please contact your Sage Production Management partner or Scanco for information on how to obtain a quote for custom modifications to be retrofitted to Sage 100 2019 with Scanco Multi-Bin 6.10290 for Sage Production Management 6.10.2.0.2.
- ☐ Do **not** install Scanco Multi-Bin 6.10290 for Sage Production Management 6.10.2.0.2 when extended solutions or third-party products are installed on the Sage 100 system. Please contact your Sage Production Management partner or Scanco Support at support@scanco.com for information on evaluating extended solutions or third-party software.
- ☐ Confirm that Scanco Manufacturing Automation, Scanco In Transit, Scanco Scheduled Bill of Materials and/or Scanco Advanced Landed Cost are uninstalled and a new registration file not containing a registration number for these Scanco enhancement modules is activated in Sage 100. Refer to page 22 for information on how to uninstall and unregister Scanco Manufacturing Automation, Scanco In Transit, Scanco Scheduled Bill of Materials and Scanco Advanced Landed Cost.
- ☐ Confirm that the Sage 100 installed version is 6.10.2.0 for the Sage 100 Standard, Sage 100 Advanced or Sage 100 Premium system. Access Help menu > About Sage to review the currently installed Sage 100 version. To review additional information on the currently installed Sage 100 system in the Sage 100 System Information window, select File menu > Run. Type *info in the Program field. Select the OK button.
- ☐ Confirm that Sage Production Management version 6.10.2.0.2 is installed. Access Production Management Setup menu > About Production Management to review the currently installed Sage Production Management version.

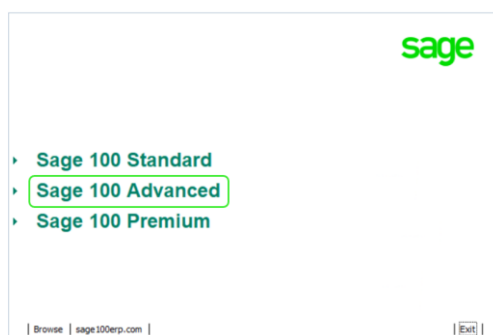
- ❑ Backup the entire Sage 100 Standard, Sage 100 Advanced or Sage 100 Premium system, including programs and data files, after all data entry files are updated, and before installing Scanco Multi-Bin 6.10290 for Sage Production Management 6.10.2.0.2.
- ❑ Download the Scanco Multi-Bin 6.10290 for Sage Production Management 6.10.2.0.2 installation file and specify registration information from <http://info.scanco.com/prod-mgmt-downloads>. The Sage Production Management downloads page can be accessed from the Sage 100 2019 installation wizard.

 **Warning:** A new registration file must be requested and activated

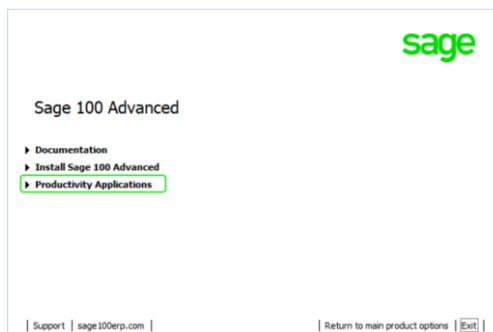
1. For a new installation of Scanco Multi-Bin for Sage Production Management,
2. When migrating from a lower version, for example 2019 version 6.10.2.0 to 2020 version 6.20.0.1, or
3. When the subscription plan has expired or modified.

A new registration file is not required for service releases or product updates when a registration file was previously activated.

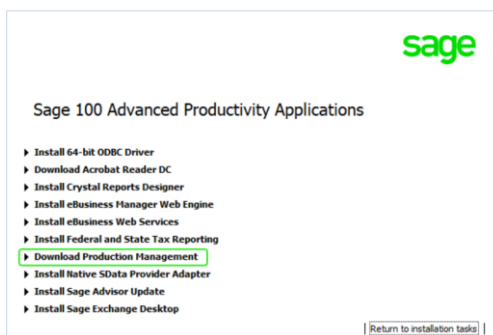
1. From the Sage 100 2019 installation Autorun screen, click a version of Sage 100.



2. From the Installation Tasks menu, click Productivity Applications.



3. Click Download Production Management to access the Sage Production Management downloads page.



Scanco Multi-Bin 6.10290 for Sage Production Management 6.10.2.0.2 Installation Checklists

Determine the installation path. Review and precisely follow one of the following installation checklists.

- New Installation of Sage 100 2019, Sage Production Management 6.10.2.0.2 and Scanco Multi-Bin 6.10290 for Production Management 6.10.2.0.2. Refer to page 7.
- Upgrading Sage 100 2019 to Product Update 2 with a New Installation of Sage Production Management 6.10.2.0.2 and Scanco Multi-Bin 6.10290 for Production Management 6.10.2.0.2. Refer to page 8.
- Upgrading Sage 100 2019 and Sage Production Management to Production Update 2 with a New Installation of Scanco Multi-Bin 6.10290 for Production Management 6.10.2.0.2. Refer to page 9.
- Upgrading Sage 100 2019 to Product Update 2 and Scanco Multi-Bin to 6.10290 with a New Installation of Production Management 6.10290 and Scanco Multi-Bin 6.10290 for Production Management 6.10.2.0.2. Refer to page 10.
- Converting Work Order data that does not contain Scanco Multi-Bin data.



Note: Work Order data containing Scanco Multi-Bin data currently cannot be converted to Sage Production Management for Scanco Multi-Bin 6.10290 for Sage Production Management 6.10.2.0.2.

New Installation of Sage 100, Sage Production Management and Scanco Multi-Bin for Production Management

- ❑ Complete the Sage Production Management 6.10.2.0.2 pre-installation checklist. Refer to the Sage Production Management 6.10.2.0.2 Installation Guide.
- ❑ Complete the Scanco Multi-Bin 6.10290 for Sage Production Management 6.10.2.0.2 pre-installation checklist.
- ❑ Install Sage 100 2019. Refer to the Sage 100 2019 Installation and System Administrator's Guide.
- ❑ Install Product Update 2 for Sage 100 2019.
- ❑ Run the Sage 100 workstation setup process on all applicable workstations. Refer to the Sage 100 2019 Installation and System Administrator's Guide.
- ❑ Install Sage Production Management 6.10.2.0.2. Refer to the Sage Production Management 6.10.2.0.2 Installation Guide.
- ❑ If hot fixes are available on the Sage Production Management Downloads page for Sage Production Management version 6.10.2.0.2, install Sage Production Management 6.10.2.0.2 hot fixes. Refer to the Sage Production Management 6.10.2.0.2 Installation Guide.
- ❑ Install Scanco Multi-Bin 6.10290 for Sage Production Management 6.10.2.0.2.
- ❑ If hot fixes are available on the Sage Production Management Downloads page for Scanco Multi-Bin 6.10290 for Sage Production Management 6.10.2.0.2, install the hot fixes. Refer to the How to Install Scanco Multi-Bin for Sage Production Management Hot Fixes section on page 18.
- ❑ Activate the required and optional Sage 100 modules from Library Master Main menu > Company Information. Refer to the Activating Sage Production Management section in the Sage Production Management Installation Guide.
- ❑ Create and set up company data files for required and optional Sage 100 modules that integrate with Scanco Multi-Bin 6.10290 for Sage Production Management 6.10.2.0.2. Refer to the Creating Company Data Files for Sage Modules section in the Sage Production Management Installation Guide.
- ❑ Run the data conversion process from Library Master Main menu > Company Information.
- ❑ Define role security for Sage Production Management and Scanco Multi-Bin from Library Master Main menu > Role Maintenance.

- ❑ Register Sage Production Management 6.10.2.0.2 and Scanco Multi-Bin from Library Master Setup menu > Scanco Product Registration. Refer to the Registering Scanco Multi-Bin for Sage Production Management section on page 15.
- ❑ Prepare Scanco Multi-Bin 6.10290 for Sage Production Management 6.10.2.0.2 data for companies where Scanco Multi-Bin for Sage Production Management is utilized. Refer to the Preparing Scanco Multi-Bin for Sage Production Management Data section on page 18.
- ❑ Verify the Sage 100, Sage Production Management and Scanco Multi-Bin versions by accessing Production Management Setup menu > About Production Management. Refer to the About Production Management section on page 21.
- ❑ Set up required and optional modules including Sage Production Management and Scanco Multi-Bin for Sage Production Management. Refer to the Scanco Multi-Bin Training Guide for information on Scanco Multi-Bin setups. Refer to the Sage Production Management Installation Guide, Training Guide and Online Help for information on Sage Production Management setups.

Upgrading Sage 100 with a New Installation of Production Management and Scanco Multi-Bin for Production Management

- ❑ Complete the Sage Production Management 6.10.2.0.2 pre-installation checklist.
- ❑ Complete the Scanco Multi-Bin 6.10290 for Sage Production Management 6.10.2.0.2 pre-installation checklist.
- ❑ Install Sage 100 2019. Refer to the Sage 100 2019 Installation and System Administrator's Guide.
- ❑ Install Sage 100 2019 Product Update 2. Refer to the Sage 100 2019 Customer Upgrade Guide and the Sage 100 2019 Upgrade Checklist.
- ❑ Run the Sage 100 workstation setup process on all applicable workstations. Refer to the Sage 100 2019 Installation and System Administrator's Guide.
- ❑ Migrate and convert Sage 100 data to 2019 version 6.10.2.0. Refer to the Sage 100 2019 Installation and System Administrator's Guide.
- ❑ Install Sage Production Management 6.10.2.0.2. Refer to the Sage Production Management Installation Guide.
- ❑ If hot fixes are available on the Sage Production Management Downloads page for Sage Production Management version 6.10.2.0.2, install Sage Production Management 6.10.2.0.2 hot fixes. Refer to the Sage Production Management 6.10.2.0.2 Installation Guide.
- ❑ Install Scanco Multi-Bin 6.10290 for Sage Production Management 6.10.2.0.2.
- ❑ If hot fixes are available on the Sage Production Management Downloads page for Scanco Multi-Bin 6.10290 for Sage Production Management 6.10.2.0.2, install the hot fixes. Refer to the How to Install Scanco Multi-Bin for Sage Production Management Hot Fixes section on page 18.
- ❑ Back up all company data files before conducting the company conversion process.
- ❑ Define role security for Sage Production Management and Scanco Multi-Bin from Library Master Main menu > Role Maintenance.
- ❑ Run the data conversion process from Library Master Main menu > Company Information for existing companies.
- ❑ Activate the required and optional Sage 100 modules, if not already activated, and the Sage Production Management module from Library Master Main menu > Company Information. Refer to the Activating Sage Production Management section in the Sage Production Management Installation Guide.
- ❑ Register Sage Production Management 6.10.2.0.2 and Scanco Multi-Bin from Library Master Setup menu > Scanco Product Registration. Refer to the Registering Scanco Multi-Bin for Sage Production Management section on page 15.

- ❑ Prepare Scanco Multi-Bin 6.10290 for Sage Production Management 6.10.2.0.2 data for companies where Scanco Multi-Bin for Sage Production Management is utilized. Refer to the Preparing Scanco Multi-Bin for Sage Production Management Data section on page 18.
- ❑ Verify the Sage 100, Sage Production Management and Scanco Multi-Bin versions by accessing Production Management Setup menu > About Production Management. Refer to the About Production Management section on page 21.
- ❑ Access the Custom Office Utilities Menu and run the update customized panels by selecting Custom Office Utilities menu > Update Customized Panels to Current Level. Review the placement of all user-defined fields. Refer to the Sage 100 2019 Customer Upgrade Guide and the Sage 100 2019 Upgrade Checklist.
- ❑ Reset all grids.
- ❑ Set up Sage Production Management and Scanco Multi-Bin for Sage Production Management. Refer to the Scanco Multi-Bin Training Guide for information on Scanco Multi-Bin setups. Refer to the Sage Production Management Installation Guide, Training Guide and Online Help for information on Sage Production Management setups.


Upgrading Sage 100 2019 and Production Management with a New Installation of Scanco Multi-Bin for Production Management


- ❑ Complete the Sage Production Management 6.10.2.0.2 pre-installation checklist.
- ❑ Complete the Scanco Multi-Bin 6.10290 for Sage Production Management 6.10.2.0.2 pre-installation checklist.
- ❑ Install Sage 100 2019 Product Update 2. Refer to the Sage 100 2019 Customer Upgrade Guide and the Sage 100 2019 Upgrade Checklist.
- ❑ Install Sage Production Management 6.10.2.0.2. Refer to the Installing Sage Production Management section.
- ❑ If hot fixes are available on the Sage Production Management Downloads page for Sage Production Management version 6.10.2.0.2, install Sage Production Management 6.10.2.0.2 hot fixes. Refer to the Sage Production Management 6.10.2.0.2 Installation Guide.
- ❑ Back up all company data files before proceeding to the company conversion process.
- ❑ Run the data conversion process from Library Master menu > Company Information.
- ❑ Verify the Sage 100 and Sage Production Management versions by accessing Production Management Setup menu > About Production Management. The Sage 100 version should display as 6.10.2.0 and the Sage Production Management version should display as 6.10.2.0.2. Refer to the About Production Management section on page 21.
- ❑ Install Scanco Multi-Bin 6.10290 for Sage Production Management 6.10.2.0.2.
- ❑ If hot fixes are available on the Sage Production Management Downloads page for Scanco Multi-Bin 6.10290 for Sage Production Management 6.10.2.0.2, install the hot fixes. Refer to the How to Install Scanco Multi-Bin for Sage Production Management Hot Fixes section on page 18.
- ❑ Back up all company data files before conducting the company conversion process.
- ❑ Define role security for Scanco Multi-Bin from Library Master Main menu > Role Maintenance.
- ❑ Register Sage Production Management 6.10.2.0.2 and Scanco Multi-Bin 6.10290 from Library Master Setup menu > Scanco Product Registration. Refer to the Registering Scanco Multi-Bin for Sage Production Management section on page 15.
- ❑ Prepare Scanco Multi-Bin 6.10290 for Sage Production Management 6.10.2.0.2 data for companies where Scanco Multi-Bin for Sage Production Management is utilized. Refer to the Preparing Scanco Multi-Bin for Sage Production Management Data section on page 18.
- ❑ Access the Custom Office Utilities Menu and run the update customized panels by selecting Custom Office Utilities menu > Update Customized Panels to Current Level. Review the placement of all user-defined fields. Refer to the Sage 100 2019 Customer Upgrade Guide and the Sage 100 2019 Upgrade Checklist.

- ❑ Reset all grids.
- ❑ Access Inventory Management Setup menu > Scanco Multi-Bin Warehouse Mgmt Options to set up Scanco Multi-Bin 6.10290 for Sage Production Management 6.10.2.0.2 options.

Upgrading Sage 100 and Scanco Multi-Bin to 2019 with a New Installation of Production Management and Scanco Multi-Bin for Production Management

- ❑ Complete the Sage Production Management 6.10.2.0.2 pre-installation checklist.
- ❑ Complete the Scanco Multi-Bin 6.10290 for Sage Production Management 6.10.2.0.2 pre-installation checklist.
- ❑ Upgrade Sage 100 to 2019 Product Update 2 following Sage upgrade instructions. Refer to the Sage 100 2019 Installation and System Administrator's Guide..
- ❑ Upgrade and/or migrate Scanco Multi-Bin to version 6.10290 following Scanco Multi-Bin upgrade instructions. Refer to the Scanco Multi-Bin Training Guide for information on how to upgrade and migrate Scanco Multi-Bin.

 **Note:** Scanco Multi-Bin must be version 6.10290.

 **Warning:** Scanco Multi-Bin On The Water may not be registered when Sage Production Management or Scanco Multi-Bin 6.10290 for Sage Production Management 6.10.2.0.2 is installed. A new Scanco Multi-Bin registration file that does not contain Scanco Multi-Bin On The Water must be obtained and activated in order to install Sage Production Management and Scanco Multi-Bin 6.10290 for Sage Production Management 6.10.2.0.2.

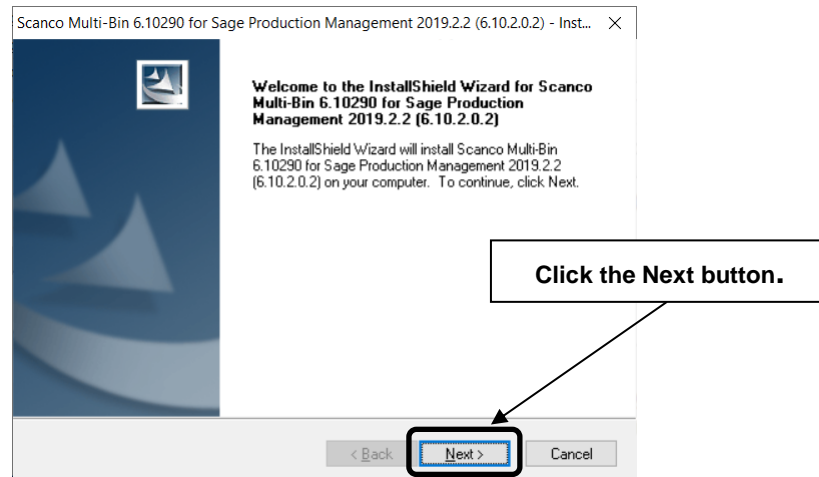
- ❑ Install Sage Production Management 6.10.2.0.2. Refer to the Installing Sage Production Management section in the Sage Production Management Installation Guide.
- ❑ If hot fixes are available on the Sage Production Management Downloads page for Sage Production Management version 6.10.2.0.2, install Sage Production Management 6.10.2.0.2 hot fixes. Refer to the Sage Production Management 6.10.2.0.2 Installation Guide.
- ❑ Install Scanco Multi-Bin 6.10290 for Sage Production Management 6.10.2.0.2.
- ❑ If hot fixes are available on the Sage Production Management Downloads page for Scanco Multi-Bin 6.10290 for Sage Production Management 6.10.2.0.2, install the hot fixes. Refer to the How to Install Scanco Multi-Bin for Sage Production Management Hot Fixes section on page 18.
- ❑ Run the data conversion process from Library Master Main menu > Company Information for existing companies.
- ❑ Activate the Sage Production Management module from Library Master Main menu > Company Information.
- ❑ Register Sage Production Management 6.10.2.0.2 and Scanco Multi-Bin 6.10290 from Library Master Setup menu > Scanco Product Registration. Refer to the Registering Scanco Multi-Bin for Sage Production Management section on page 15.
- ❑ Prepare Scanco Multi-Bin 6.10290 for Sage Production Management 6.10.2.0.2 data for companies where Scanco Multi-Bin for Sage Production Management is utilized. Refer to the Preparing Scanco Multi-Bin for Sage Production Management Data section on page 18.
- ❑ Access the Custom Office Utilities Menu and run the update customized panels by selecting Custom Office Utilities menu > Update Customized Panels to Current Level. Review the placement of all user-defined fields. Refer to the Sage 100 2019 Customer Upgrade Guide and the Sage 100 2019 Upgrade Checklist.
- ❑ Reset all grids.
- ❑ Access Production Management Setup menu > Production Management Options to set up the Production Management module.

Installing Scanco Multi-Bin for Sage Production Management

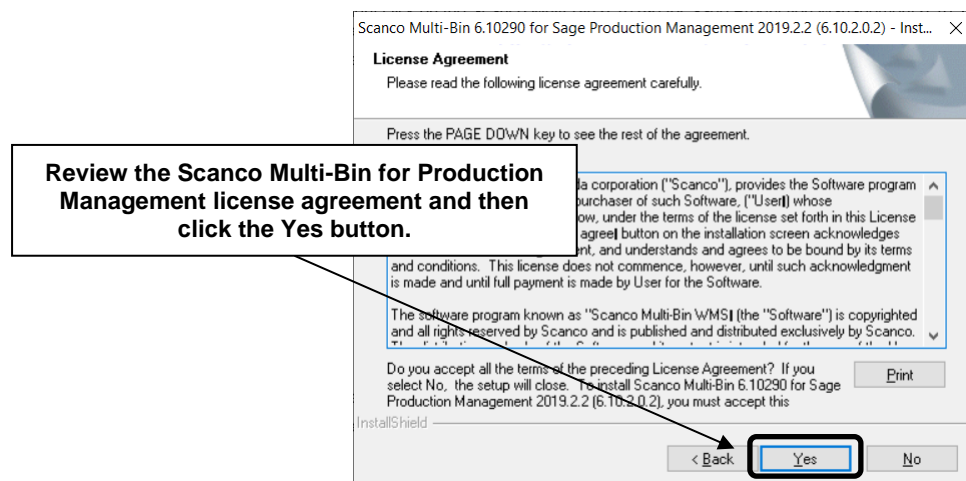
Conduct the following steps after Sage 100 2019, Product Update 2 for Sage 100 2019 and Sage Production Management 6.10.2.0.2 are installed successfully.

How to Install Scanco Multi-Bin for Sage Production Management

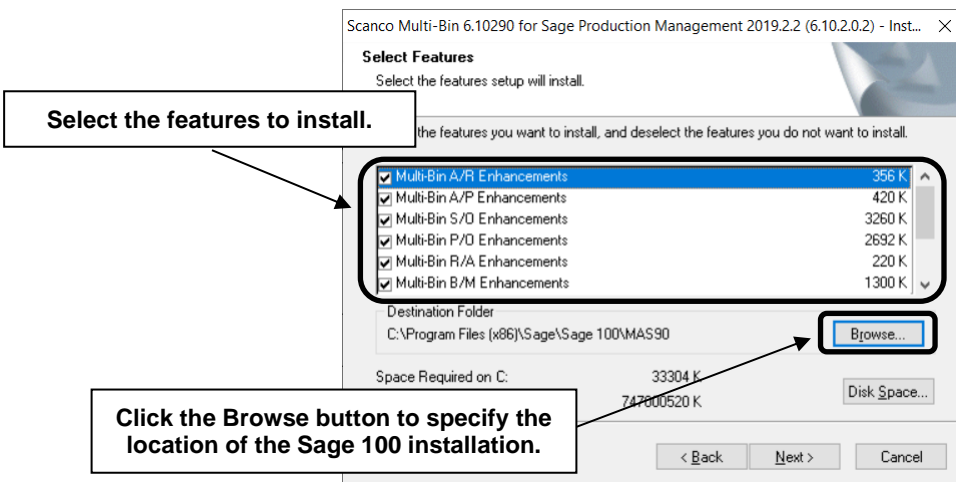
1. Download the MB610290_PM.exe file from the Sage Production Management Downloads page at <http://info.scanco.com/prod-mgmt-downloads>.
2. Right click on the Scanco Multi-Bin 6.10290 for Sage Production Management 6.10.2.0.2 executable file.
3. Select Run as administrator.



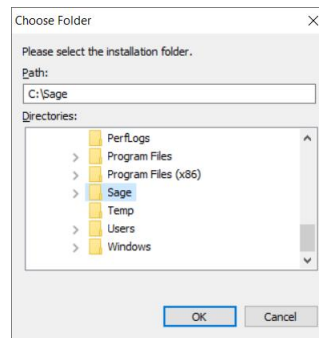
4. Select the Next button from the Scanco Multi-Bin for Production Management Welcome window.
5. Review the Scanco Multi-Bin for Sage Production Management License Agreement.



6. Select the Yes button to agree to the Scanco Multi-Bin for Sage Production Management License Agreement and to continue with the Scanco Multi-Bin 6.10290 for Sage Production Management 6.10.2.0.2 installation process.
7. Accept the defaulting check box field settings or select the Scanco Multi-Bin for Sage Production Management module enhancement check box fields to install Scanco Multi-Bin 6.10290 for Sage Production Management 6.10.2.0.2.



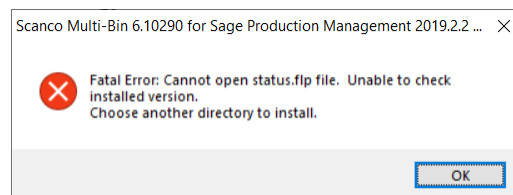
8. Accept the default location of Sage 100 or select the Browse button to specify the location of Sage 100. The Choose Folder window displays after the Browse button is selected.



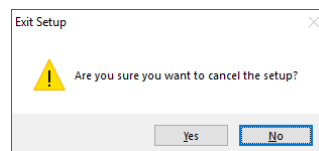
Specify the location of Sage 100 in the Path field. Select the OK button to return to the Select Features window.

9. Select the Next button from the Select Features window. The installed version of Sage 100 Standard, Sage 100 Advanced or Sage 100 Premium and Sage Production Management are validated.

When Sage 100 2019 with Product Update 2 version 6.10.2.0 has not been installed at the specified Sage 100 Standard, Sage 100 Advanced or Sage 100 Premium location, the following message displays.

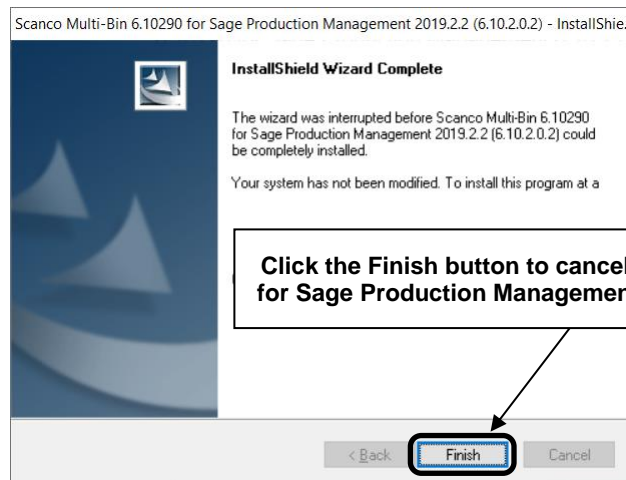


Select the OK button from the message. Select the Cancel button from the Select Features window. The following message displays.



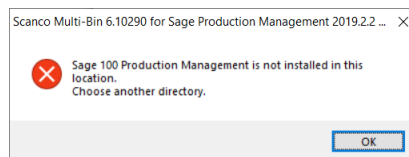
Select Yes in the message.

Select the Finish button from the InstallShield Wizard Complete window to cancel the Scanco Multi-Bin 6.10290 for Sage Production Management 6.10.2.0.2 installation process.



Install Sage 100 2019 Product Update 2 and Sage Production Management 6.10.2.0.2 and then install Scanco Multi-Bin 6.10290 for Sage Production Management 6.10.2.0.2.

Warning: When Sage Production Management 6.10.2.0.2 is not installed in the selected location, the following message displays.



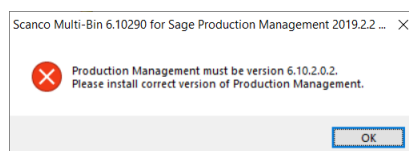
Select the OK button and modify the location to where Sage Production Management 6.10.2.0.2 is installed or cancel the Scanco Multi-Bin 6.10290 for Sage Production Management 6.10.2.0.2 installation process and install Sage Production Management 6.10.2.0.

Warning: When Sage 100cloud Manufacturing is installed in the selected location, the following message displays.



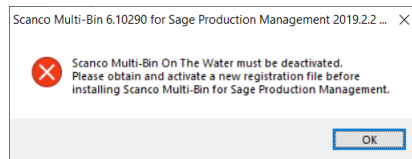
Select the OK button and modify the destination folder to where Sage Production Management 6.10.2.0.2 is installed. Sage Production Management and Scanco Multi-Bin for Sage Production Management may not be installed in the same Sage 100 location containing Sage 100cloud Manufacturing.

Warning: When Sage Production Management is installed but is not version 6.10.2.0.2, the following message displays.



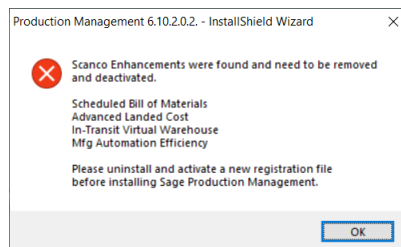
Select OK and cancel the Scanco Multi-Bin 6.10290 for Sage Production Management 6.10.2.0.2 installation process. Install Sage Production Management 6.10.2.0.2 and then install Scanco Multi-Bin 6.10290 for Sage Production Management 6.10.2.0.2.

Warning: Scanco Multi-Bin On The Water may not be registered when Sage Production Management or Scanco Multi-Bin 6.10290 for Sage Production Management 6.10.2.0.2 is installed. The following message displays when the selected location contains Scanco Multi-Bin with Scanco Multi-Bin On The Water activated.



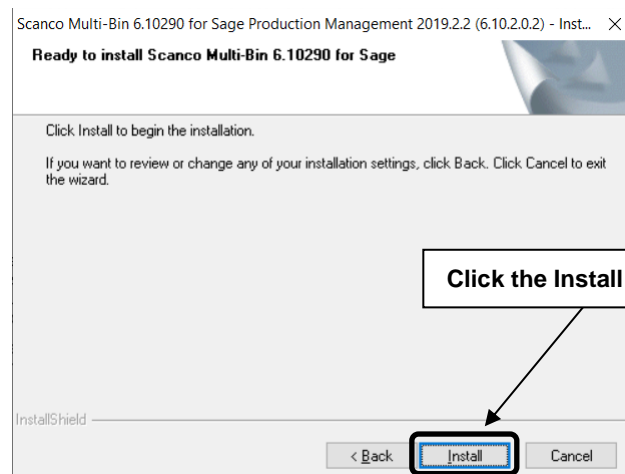
Select OK and cancel the Scanco Multi-Bin 6.10290 for Sage Production Management 6.10.2.0.2 installation process. A new Scanco Multi-Bin registration file that does not contain Scanco Multi-Bin On The Water must be obtained and activated in order to install Sage Production Management 6.10.2.0.2 and Scanco Multi-Bin 6.10290 for Sage Production Management 6.10.2.0.2.

Warning: Scanco Manufacturing Automation, Scanco In Transit, Scanco Scheduled Bill of Materials and Scanco Advanced Landed Cost do not integrate and are not compatible with Sage Production Management and Scanco Multi-Bin for Sage Production Management. The following message displays when Scanco Manufacturing Automation, Scanco In Transit, Scanco Scheduled Bill of Materials and/or Scanco Advanced Landed Cost are installed and/or activated in Sage 100.



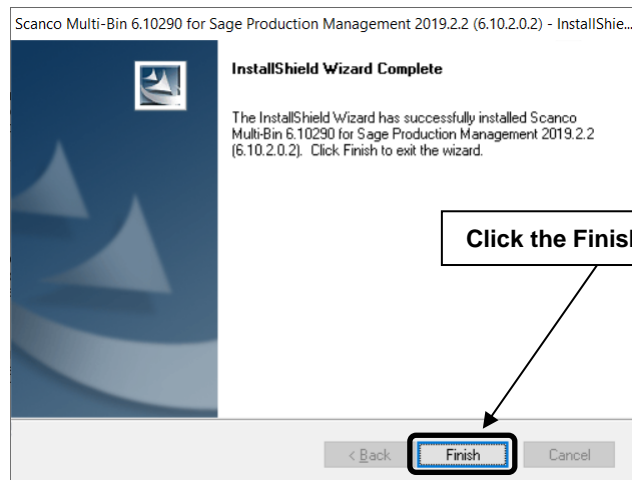
Select OK and cancel the Scanco Multi-Bin 6.10290 for Sage Production Management 6.10.2.0.2 installation process. Refer to page 22 for information on the steps to take when Scanco Manufacturing Automation, Scanco In Transit, Scanco Scheduled Bill of Materials and/or Scanco Advanced Landed Cost are installed in Sage 100.

10. Select the Install button from the following window to install Scanco Multi-Bin 6.10290 for Sage Production Management 6.10.2.0.2.



Select the Back button to return to the Select Features window. Select the Cancel button, select Yes in the message *Are you sure you want to cancel the setup?* and the Finish button from the InstallShield Wizard Complete window to cancel the Scanco Multi-Bin 6.10290 for Sage Production Management 6.10.2.0.2 installation process.

11. Select the Finish button from the InstallShield Wizard Complete window to complete the Scanco Multi-Bin 6.10290 for Sage Production Management 6.10.2.0.2 installation process.



Registering Scanco Multi-Bin for Sage Production Management

A new registration file must be requested and activated

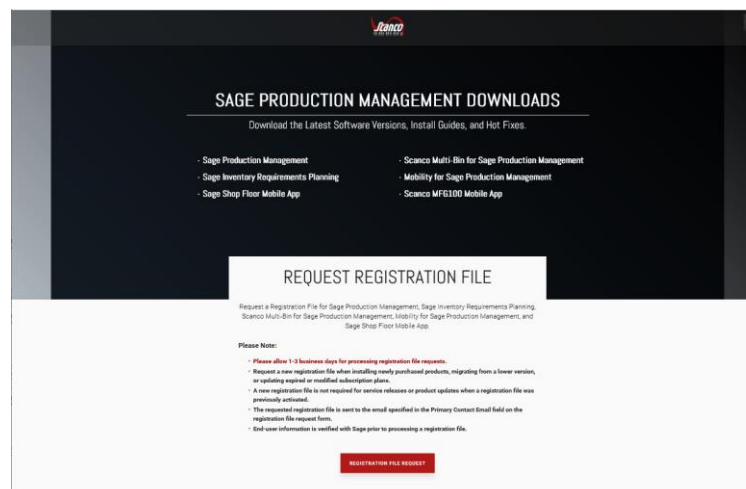
1. For a new installation of Scanco Multi-Bin for Sage Production Management,
2. When migrating from a lower version, for example 2019 version 6.10.2.0 to 2020 version 6.20.0.1, or
3. When the subscription plan has expired or modified.

A new registration file is not required for service releases or product updates when a registration file was previously activated.

Sage Production Management and Scanco Multi-Bin must be registered from Library Master Setup menu > Scanco Production Registration after installing Sage Production Management 6.10.2.0.2 and Scanco Multi-Bin 6.10290 for Sage Production Management 6.10.2.0.2.

How to Obtain Scanco Multi-Bin for Sage Production Management Registration

1. Access the Scanco Production Management Downloads page <http://info.scanco.com/prod-mgmt-downloads>



2. Scroll down and click on Registration File Request.

REGISTRATION FILE REQUEST FORM

Please use the form below to request your Sage Production Management, Sage Inventory Requirements Planning, Scanco Multi-Bin for Sage Production Management, Mobility for Sage Production Management, and Sage Shop Floor Mobile App registration file.

NOTE: If you are a reseller requesting a registration file for an end-user, please complete all fields with the end-users' information.

COMPANY NAME*

PHONE NUMBER

COMPANY CONTACT NAME*

PRIMARY CONTACT EMAIL* (Key File Will Be Sent Here)

☐ CHECK THE BOX IF YOU ARE A SAGE RESELLER

IF YOU ARE AN END-USER, ARE YOU WORKING WITH A SAGE RESELLER?

☐ YES

☐ NO

IF YES, WHAT IS THE NAME OF YOUR SAGE RESELLER?

3. Enter the required information in the Sage Production Management Registration form. Fields noted with an asterisk (*) are required.
4. Select the Sage Production Management – Make to Stock and Scanco Multi-Bin for Production Management check boxes. Select the check boxes for Sage Inventory Requirements Planning, Mobility for Sage Production Management, Sage Shop Floor User/Devices, and/or Dynamic Off when these modules have been purchased.

WHICH MODULES DO YOU WISH TO REGISTER?

- ☒ SAGE PRODUCTION MANAGEMENT – MAKE TO STOCK
- ☐ SAGE INVENTORY REQUIREMENTS PLANNING
- ☒ SCANCO MULTI-BIN FOR PRODUCTION MANAGEMENT
- ☐ SAGE SHOP FLOOR USERS/DEVICES
- ☐ MOBILITY FOR SAGE PRODUCTION MANAGEMENT
- ☐ DYNAMIC OFF

5. Select the Submit button.

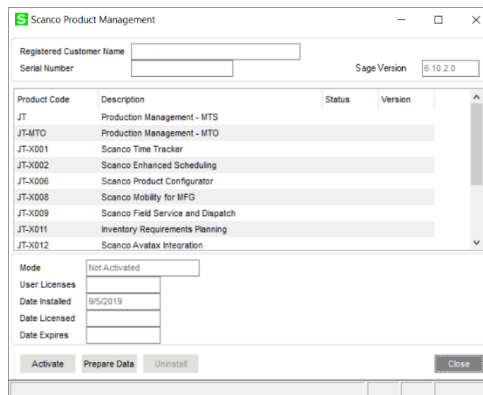
Note: Please allow 1-3 business days for processing Scanco Multi-Bin for Production Management registration requests. The Scanco Multi-Bin for Production Management registration file is sent to the email specified in the Primary Contact Email field on the Production Management Registration form.

How to Register Scanco Multi-Bin for Sage Production Management

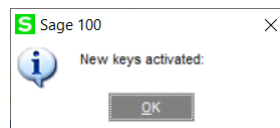
1. When a license registration file is received via email, place the registration text file at ...\\MAS90_Scanco in the location where Sage 100 is installed.

Note: Submit registration information before downloading from the Sage Production Management Downloads page and installing Scanco Multi-Bin for Sage Production Management.

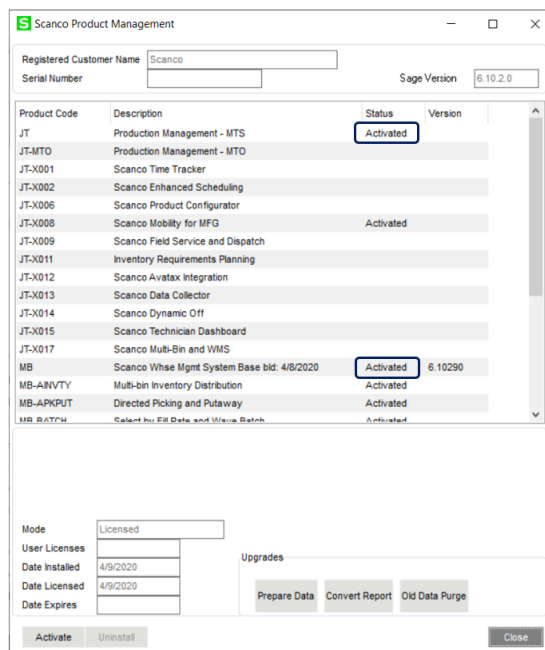
2. Access Library Master Setup menu > Scanco Product Registration.



3. Verify the correct Sage 100 Serial number and User Licenses displays.
4. Select the Activate button.
5. Select OK in the New keys activated message.



6. Verify Activated displays for the purchased Scanco Multi-Bin product codes.



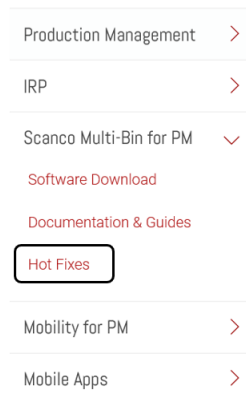
7. Select the Close button.

Scanco Multi-Bin for Sage Production Management Hot Fixes


Occasionally hot fixes are required to be installed after installing Scanco Multi-Bin for Production Management. Access Scanco Multi-Bin for Production Management hot fixes from the Production Management Downloads page <http://info.scanco.com/prod-mgmt-downloads>

How to Install Scanco Multi-Bin for Sage Production Management Hot Fixes

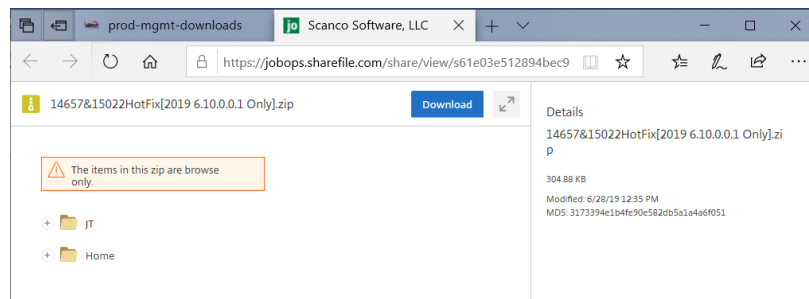
1. Access the Production Management Downloads page <http://info.scanco.com/prod-mgmt-downloads>
2. Click on the Scanco Multi-Bin for PM menu option.
3. Click on the Hot Fix menu option from the Scanco Multi-Bin for PM menu.




4. Review the available hot fixes for Scanco Multi-Bin for Sage Production Management for the currently installed version.

 **Note:** Hot fixes are version specific. Only install hot fixes for the current Scanco Multi-Bin for Sage Production Management version.

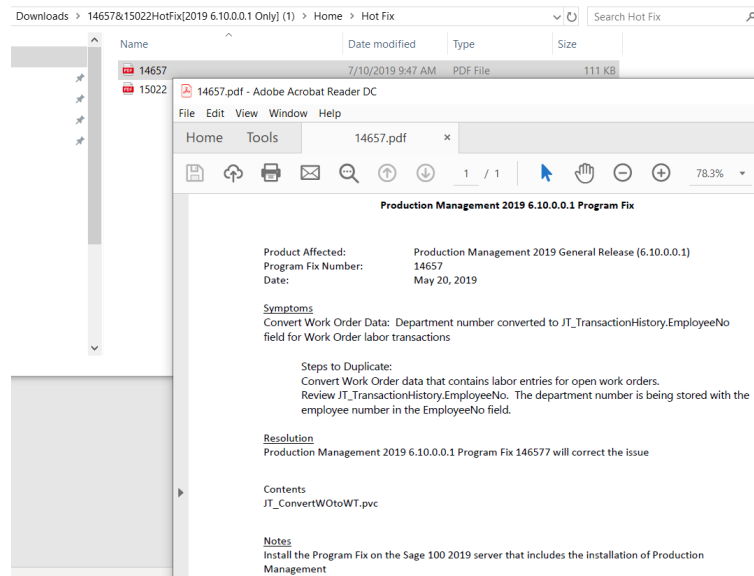
5. Click on a hot fix link to be directed to the download file.



6. Click on the Download button.
7. Specify the location to download the hot fix.
8. Extract the hot fix file to the MAS90 directory where Sage 100 and Scanco Multi-Bin for Sage Production Management are installed.

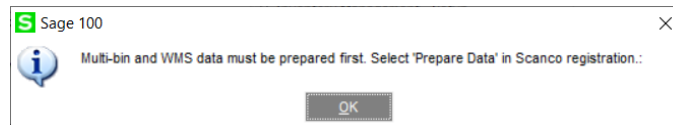
 **Warning:** If the hot fix zip file is extracted to a location other than the MAS90 directory, the hot fix programs must be copied to the file location specified in the hot fix zip file.

9. Select to replace the files in the destination if the hot file was extracted to the MAS90 directory where Sage 100 and Production Management are installed. The hot fix program is now located in the correct directory in the Sage 100 and Scanco Multi-Bin for Sage Production Management installation.
10. Review the document(s) included in the hot fix download file. Descriptions and instructions are included in this documentation.



Preparing Scanco Multi-Bin for Sage Production Management Data

Scanco Multi-Bin for Sage Production Management data must be prepared in order to set up and access Scanco Multi-Bin Warehouse Mgmt Options for a new company. The following message displays when data has not been prepared for the active company.



Select OK to return to the menu.

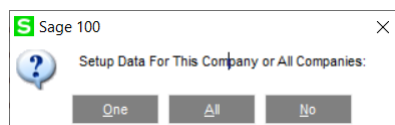
Data must also be prepared after migrating to a new Sage version, upgrading to a new Sage product update or activating a new module, including Sage Production Management.

How to Prepare Scanco Multi-Bin for Sage Production Management Data

1. Access Library Master Setup menu > Scanco Product Registration.

Warning: Only run the Scanco Multi-Bin prepare process when all users are logged out of the Sage 100 system.

2. Select the Prepare button.
3. Select a button from the following message.



Select One to prepare data for the active company. Select All to prepare data for all company codes that exist in Sage 100. Select No to cancel the Scanco Multi-Bin prepare data process.

4. Close the Scanco Product Registration window.
5. Access Inventory Management Setup menu > Scanco Multi-Bin Warehouse Mgmt Options to setup the Scanco Multi-Bin module options in a new company. Refer to the Scanco Multi-Bin Training Guide for more information.

Converting Work Order Data to Sage Production Management

Sage Work Order data can be converted into Production Management data by using the Sage Production Management Convert Work Order Data utility.

Warning: Work Order data that does not contain Scanco Multi-Bin data must be converted to Sage Production Management prior to installing Scanco Multi-Bin 6.10290 for Sage Production Management 6.10.2.0.2.

Warning: Work Order data may not contain Scanco Multi-Bin data when converting to Sage Production Management.

How to Convert Work Order Data Prior to Installing Scanco Multi-Bin for Sage Production Management

1. Complete all steps on the Upgrading Sage 100 with a New Installation of Production Management check list found in the Sage Production Management Installation Guide.
2. If migrating to Sage 100 Premium, review and complete the necessary steps from the Migrating to Sage Production Management 6.10.2.0.2 section in the Sage Production Management Installation Guide.
3. Follow the steps defined in the Sage Production Management Setup Wizard section found in the Sage Production Management Installation Guide.
4. Review and assign values to all fields in Production Management Options.

Warning: Field values assigned in Production Management Options are retained during the Convert Work Order Data process and are not overwritten by values assigned in Work Order Options. Since Production Management Options present many different parameters, it is important to review and assign all fields prior to running the Convert Work Order Data process.

Description	Enable	Next Batch
Transaction Entry	<input checked="" type="checkbox"/>	00003
Labor Entry	<input checked="" type="checkbox"/>	00001

Defaults

Default Warehouse for Parent Item	000	Auto Issue Labor	<input checked="" type="checkbox"/>	Backflush Labor	<input checked="" type="checkbox"/>
Use Item Default Warehouse for Parent Item	<input type="checkbox"/>	Auto Issue Materials	<input checked="" type="checkbox"/>	Backflush Materials	<input checked="" type="checkbox"/>
Default Warehouse for Materials	000	Limit Materials Auto Issue to Quantity On Hand	<input type="checkbox"/>		
Use Item Default Warehouse for Materials	<input type="checkbox"/>	Auto Issue Materials Shortage Report	Sort by Item Code		
Include Open W/T Materials as Inventory Demand	<input type="checkbox"/>	Cost Completion Method	Actual		
Default Make to Stock Work Ticket Class	STK	Make To Stock			
Default Work Ticket Class for Sales Order Entry		Auto Release Work Ticket	<input type="checkbox"/>		
Explosion Subassemblies	<input type="checkbox"/>				

Default General Ledger Accounts

Special Item Purchases	115-000-000	Inventory - Raw Material
------------------------	-------------	--------------------------

Accept Cancel

Note: A work ticket class must be assigned to the Default Make to Stock Work Ticket Class field in Production Management Options in order to run the Sage Production Management Convert Work Order Data utility.

5. From Work Ticket Class Maintenance, review information assigned to the default work ticket class created by the Sage Production Management Setup Wizard.

Note: The default work ticket class assigned as the Default Make to Stock Work Ticket Class field in Production Management Options must exist in Work Ticket Class Maintenance in order to run the Sage Production Management Convert Work Order Data utility.

Warning: Some parameter, such as General Ledger accounts and overhead settings assigned to a work ticket class in Work Ticket Class Maintenance cannot be changed after a work tickets is created from converted work orders.

6. Access Production Management Utilities menu > Convert Work Order Data.

Warning: The Sage Production Management Convert Work Order Data utility does not convert Work Order history.

7. Review messages in the task window.

- The message *Warning: Production Management data is active.* displays when Sage Production Management data has been created prior to converting Work Order data to Sage Production Management data. This includes settings specified in Production Management Options and defined work ticket classes in Work Ticket Class Maintenance.
- The message *Invalid or missing default Work Ticket Class.* displays when a work ticket class is not assigned to the Default Make to Stock Work Ticket Class field in Production Management Options. A work ticket class must be assigned to the Default Make to Stock Work Ticket Class field in Production Management Options in order to run the Sage Production Management Convert Work Order Data utility.
- The message *Missing Work Ticket Class record required to convert Company.* displays when the default work ticket class assigned to the Default Make to Stock Work Ticket Class field in Production Management Options does not exist in Work Ticket Class Maintenance.

8. Select the Proceed button when the *Warning: Production Management data is active.* displays. Select the Cancel button to close the Convert Work Order Data utility window in order to specify or create a default make to stock work ticket class.

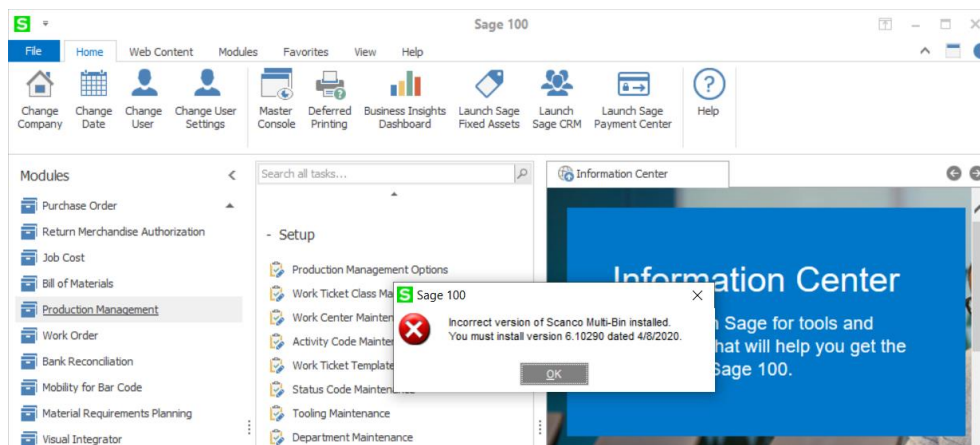
9. Select OK to the message *Work Order to Production Management conversion completed.* after Work Order data is converted to Production Management data

10. After the Convert Work Order Data utility completes, review converted Work Order data in Sage Production Management tasks.

11. Install Scanco Multi-Bin 6.10290 for Sage Production Management 6.10.2.0.2. Refer to the Upgrading Sage 100 and Production Management with a New Installation of Scanco Multi-Bin for Production Management check list on page 9, starting at the Install Scanco Multi-Bin 6.10290 for Sage Production Management 6.10.2.0.2 step.

Accessing Production Management without Installing Scanco Multi-Bin for Sage Production Management

Scanco Multi-Bin for Sage Production Management must be installed after Sage Production Management in order to utilize Scanco Multi-Bin features. When Scanco Multi-Bin for Sage Production Management is not installed in Sage 100 containing Sage Production Management and Scanco Multi-Bin, the following message displays when a Sage Production Management menu task is selected.



Select the OK button to return to the menu. Exit out of Sage 100. Install Scanco Multi-Bin for Sage Production Management. Refer to the Scanco Multi-Bin for Sage Production Management Installation guide for more information.

Scanco Manufacturing Automation, In Transit, Scheduled Bill of Materials and Advanced Landed Cost

The following do not integrate and are not compatible with Sage Production Management 6.10.2.0.2 and Scanco Multi-Bin 6.10290 for Sage Production Management 6.10.2.0.2.

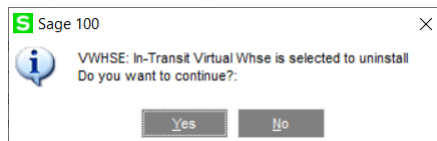
- Scanco Manufacturing Automation
- Scanco In Transit
- Scanco Scheduled Bill of Materials
- Scanco Advanced Landed Cost

The following steps must be taken prior to installing Sage Production Management 6.10.2.0.2 and Scanco Multi-Bin 6.10290 for Sage Production Management 6.10.2.0.2.

1. Scanco Manufacturing Automation, Scanco In Transit, Scanco Scheduled Bill of Materials and Scanco Advanced Landed Cost must be uninstalled following the Scanco Manufacturing Automation, Scanco In Transit, Scanco Scheduled Bill of Materials or Scanco Advanced Landed Cost uninstall process.
2. A new registration file that does not contain Scanco Manufacturing Automation, Scanco In Transit, Scanco Scheduled Bill of Materials and/or Scanco Advanced Landed Cost must be obtained and activated in Sage 100.

How to Uninstall Scanco Enhancement Modules

1. Access Library Master > Setup > Scanco Product Registration
2. Click on the Scanco Enhancement product code record.
3. Select the Uninstall button.
4. Select Yes in the following message



5. Continue the uninstall process until Scanco Manufacturing Automation, Scanco In Transit, Scanco Scheduled Bill of Materials and/or Scanco Advanced Landed Cost Scanco enhancement modules are uninstalled.
6. Copy the new registration file that does not contain Scanco Manufacturing Automation, Scanco In Transit, Scanco Scheduled Bill of Materials and/or Scanco Advanced Landed Cost to ...\\MAS90_Scanco.
7. Select the Activate button from the Scanco Product Registration window.
8. Select the Close button.

About Production Management

Use the About Production Management window to review the current Sage 100, Sage Production Management and Scanco Multi-Bin version numbers. The information available in the About Production Management window is also used when contacting Sage and Scanco Support.

Access this window from Production Management Setup menu > About Production Management.



Select the OK button to close the About Production Management window.