



sage Production
Management

Sage Production Management Hot Fixes

Installation Guide

© Copyright 2021 All rights reserved. Production Management is a trademark of Scanco Software, LLC. Sage, the Sage logos, and the Sage product and service names mentioned herein are registered trademarks or trademarks of Sage Software, Inc., or its affiliated entities. All other trademarks are the property of their respective owners. The contents herein are summary in nature and subject to change without notification from Scanco Software, LLC. Scanco Software, LLC, accepts no responsibility for inadvertent errors or omissions.

Scanco Software, LLC
1000 N Tamiami Trail
Suite 201
Nokomis, FL 34275

Contents

Introduction to Sage Production Management 4

About this Guide 4

Important Information 4

Installing Sage Production Management 5

How to Install Sage Production Management Hot Fixes 5

Introduction to Sage Production Management

Sage Production Management gives discrete make to stock manufacturers and fabricators the tools they need to achieve visibility into their entire production process. By centralizing the production process in a way that is tightly integrated with Sage 100, assemblers, manufacturers, and fabricators always know their costs, the status of items, and the material quantities required to meet demand.

About this Guide

This guide provides the information necessary for installing Sage Production Management hot fixes.


Important Information


Read this guide completely before installing Sage Production Management Hot Fixes. The Sage Production Management Hot Fixes installation includes modified programs for Sage Production Management and/or Scanco Multi-Bin for Sage Production Management. The Sage Production Management Hot Fixes Release Notes documents the modified programs included in the Sage Production Management Hot Fixes installer.


Refer to the Sage Production Management Installation Guide for information on migration and installing Sage Production Management.

Please refer to the Scanco Multi-Bin for Production Management Installation Guide for information on Scanco Multi-Bin for Production Management. Scanco Multi-Bin for Production Management Enhancements must be installed after installing Sage Production Management and Scanco Multi-Bin to utilized Scanco Multi-Bin for Production Management features.

Refer to the Sage 100 Installation and System Administrator's Guide for information on installing Sage 100 Standard, Sage 100 Advanced or Sage 100 Premium and Sage 100 2020 and Sage 100 Product Updates.

 **Warning:** Backup the entire Sage 100 Standard, Sage 100 Advanced or Sage 100 Premium system, including programs and data files, after all data entry files are updated, and before installing Sage Production Management Hot Fixes.

 **Warning:** Do *not* install Sage Production Management Hot Fixes when custom modifications exist on Sage, Sage Production Management or Scanco Multi-Bin modified modules. Custom modifications must be retrofitted to current Sage Production Management Hot Fixes programs. Review the modified programs for each hot fix listed in this document. Contact your Sage partner, Sage Production Management partner, or Scanco for information on how to obtain a quote for custom modifications to be retrofitted to Sage Production Management Hot Fixes.

 **Warning:** Sage Production Management Hot Fixes may not be compatible with non-Scanco third party products. If you use third-party products that integrate with your Sage product, check with the vendor of your third-party product to ensure their product is fully compatible with this release. If you integrate with other Sage products, check with your business partner or Sage to ensure that these components are compatible.

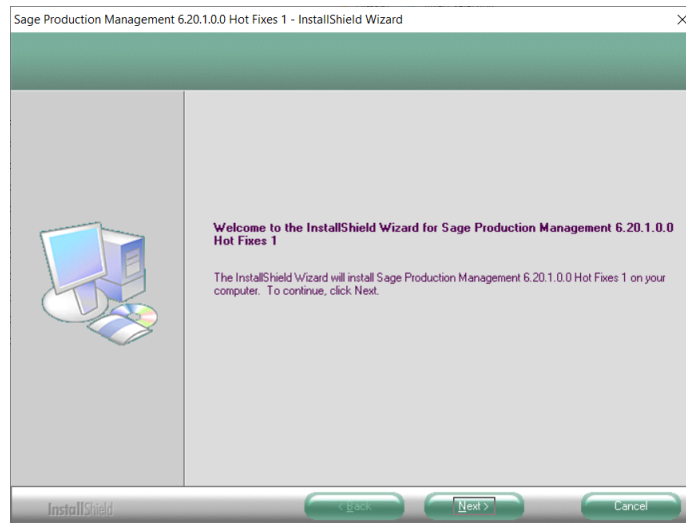
 **Note:** Please contact your authorized Sage Production Management partner or the Sage Support department at 866-996-7243 or <https://customers.sagenorthamerica.com> for assistance.

Installing Sage Production Management

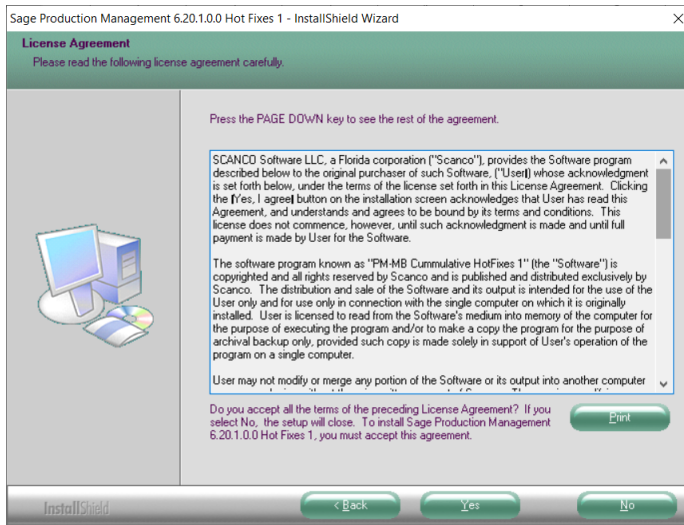
Conduct the following steps after Sage 100 2020 is installed successfully.

How to Install Sage Production Management Hot Fixes

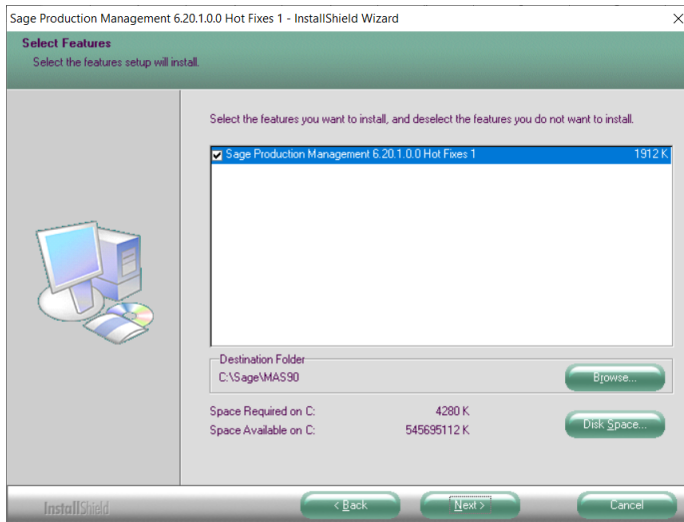
1. Download the Sage Production Management Hot Fixes Installation guide and Release Notes for the installed version of Sage 100, Scanco Multi-Bin, and/or Sage Production Management from the Sage Production Management Downloads page at <http://info.scanco.com/prod-mgmt-downloads>.
2. Download the Production Management Hot Fixes .exe file for the installed version of Sage 100, Scanco Multi-Bin, and/or Sage Production Management from the Sage Production Management Downloads page at <http://info.scanco.com/prod-mgmt-downloads>.
3. Thoroughly review the Sage Production Management Hot Fixes Installation guide and Release Notes before installing the Production Management Hot Fixes .exe file.
4. Backup the entire Sage 100 Standard, Sage 100 Advanced or Sage 100 Premium system, including programs and data files, after all data entry files are updated, and before installing Sage Production Management Hot Fixes.
5. Right click on the Sage Production Management Hot Fixes executable file.
6. Select Run as administrator.



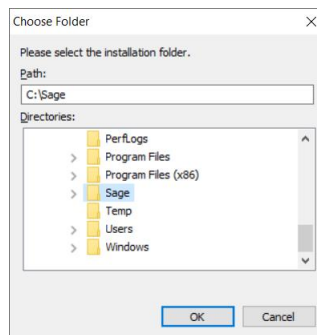
7. Select the Next button from the Sage Production Management Hot Fixes Welcome window.
8. Review the Scanco license agreement.



9. Select the Yes button to agree to the Scanco license agreement and to continue with the Sage Production Management Hot Fixes installation process.
10. Select the Sage Production Management Hot Fixes check box to install Sage Production Management Hot Fixes. Clear the check box to not install Sage Production Management Hot Fixes.



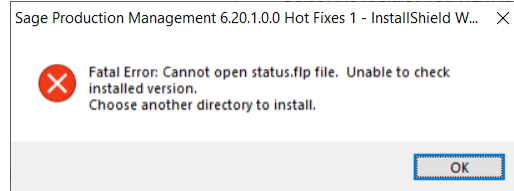
11. Accept the default location of Sage 100 or select the Browse button to specify the location of Sage 100. The Choose Folder window displays after the Browse button is selected.



Specify the location of Sage 100 in the Path field. Select the OK button to return to the Select Features window.

12. Select the Next button from the Select Features window. The installed version of Sage 100 Standard, Sage 100 Advanced or Sage 100 Premium is validated. A warning message or the Install Production Management window displays.

Warning: Sage Production Management Hot Fixes must be installed to the same location where Sage 100 Standard, Sage 100 Advanced or Sage 100 Premium is installed. When an invalid directory location is entered in the Destination Folder field found on the Select Features window, the following message displays.

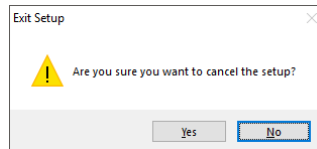


Select the OK button and modify the location where Sage 100 Standard, Sage 100 Advanced or Sage 100 Premium is installed.

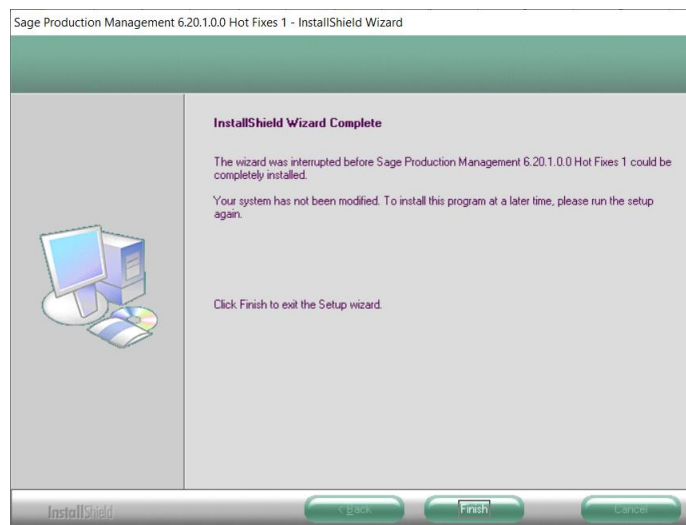
Warning: When Sage 100 is installed but is not the same version the Sage Production Management Hot Fixes is for, the following message displays.



Select OK and cancel the Sage Production Management Hot Fixes installation process. Select the Cancel button from the Select Features window. The following message displays.

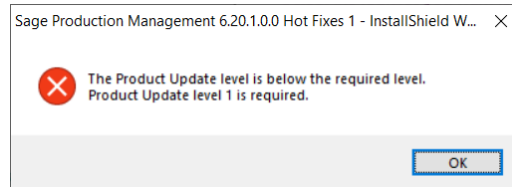


Select Yes in the message. Select the Finish button from the InstallShield Wizard Complete window to cancel the Sage Production Management Hot Fixes installation process.



Install the correct version of Sage 100, Scanco Multi-Bin, and/or Sage Production Management.

Warning: When the correct Sage 100 Product Update has not been installed at the specified Sage 100 Standard, Sage 100 Advanced or Sage 100 Premium location, the following message displays



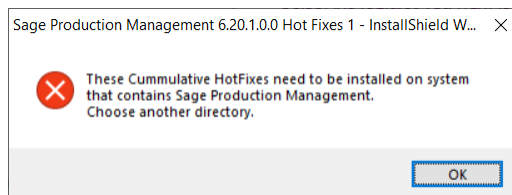
Select the OK button and then Cancel the Sage Production Management Hot Fixes installation process. Install the correct Sage 100 Product Update and corresponding versions for Scanco Multi Bin and/or Sage Production Management and then install Sage Production Management Hot Fixes.

Warning: Sage Production Management Hot Fixes may not be installed in the same location where Sage 100 Operations Management is installed. The following message displays when the selected location contains Sage 100 Operations Management.



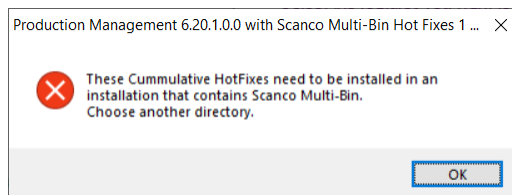
Select the OK button and then Cancel from the Select Features window.

Warning: The following message displays when Sage Production Management Hot Fixes is installed to Sage 100 that contains Scanco Multi-Bin.



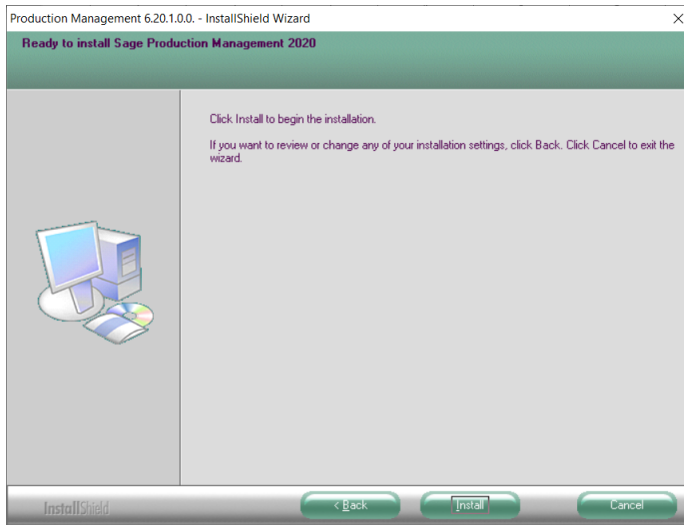
Select the OK button. Cancel the Sage Production Management Hot Fixes installation. Obtain and run the Sage Production Management Hot Fixes installer.

Warning: The following message displays when Scanco Multi-Bin for Sage Production Management Hot Fixes installer is installed to Sage 100 with Sage Production Management that does not contain Scanco Multi-Bin.



Select the OK button. Cancel the Sage Production Management Hot Fixes installation. Obtain and run the Scanco Multi-Bin for Sage Production Management Hot Fixes installer.

13. Select the Install button from the following window to install Sage Production Management Hot Fixes.



Select the Back button to return to the Select Features window. Select the Cancel button, select Yes in the message *Are you sure you want to cancel the setup?* and the Finish button from the Sage Production Management Hot Fixes Complete window to cancel the Sage Production Management Hot Fixes installation process.

14. Select the Finish button from the Sage Production Management Hot Fixes Complete window to complete the Sage Production Management Hot Fixes installation process.

