



sage Production
Management

Mobility for Scanco Multi-Bin for Sage Production Management 2020.3

Installation Guide

Sage 100 Versions 6.20.0.1 through 6.20.3.0

Sage Production Management Versions 6.20.0.1 through 6.20.3.0.0

Scanco Multi-Bin for Sage Production Management Versions 6.2001 through 6.2031

Mobility for Scanco Multi-Bin for Sage Production Management Version 6.2031

August 2021

© Copyright 2021 All rights reserved. Production Management is a trademark of Scanco Software, LLC. Sage, the Sage logos, and the Sage product and service names mentioned herein are registered trademarks or trademarks of Sage Software, Inc., or its affiliated entities. All other trademarks are the property of their respective owners. The contents herein are summary in nature and subject to change without notification from Scanco Software, LLC. Scanco Software, LLC, accepts no responsibility for inadvertent errors or omissions.

Scanco Software, LLC
1000 N Tamiami Trail
Suite 201
Nokomis, FL 34275

Contents

Introduction to Mobility for Scanco Multi-Bin for Sage Production Management 4

About this Guide 4

Important Information 4

Mobility for Scanco Multi-Bin for Production Management Pre-Installation Checklist 5

Mobility for Scanco Multi-Bin for Sage Production Management Installation Checklists 6

New Installation of Sage 100 with Mobility for Scanco Multi-Bin for Sage Production Management 6

Upgrading Sage 100 to 2020 with a New Installation of Production Management, Scanco Multi-Bin for Production Management, and Mobility for Scanco Multi-Bin for Production Management 7

Upgrading Sage 100, Scanco Multi-Bin, Production Management and Mobility for Scanco Multi-Bin for Production Management from 2020.0/2020.1/2020.2 to 2020.3 – 9

Installing Mobility for Scanco Multi-Bin for Sage Production Management 10

How to Install Mobility for Scanco Multi-Bin for Sage Production Management 10

Activating Mobility for Bar Code 14

How to Activate Mobility for Bar Code 14

Creating Company Data Files for Required Sage 100 Modules 14

Registering Mobility for Scanco Multi-Bin for Sage Production Management 15

How to Obtain Mobility for Scanco Multi-Bin for Sage Production Management Registration 15

How to Register Mobility for Scanco Multi-Bin for Sage Production Management 16

Mobility for Scanco Multi-Bin Production Management Hot Fixes 16

How to Install Mobility for Scanco Multi-Bin for Sage Production Management Hot Fixes 17

Introduction to Mobility for Scanco Multi-Bin for Sage Production Management

About this Guide


This guide provides the information necessary for installing Mobility for Scanco Multi-Bin for Sage Production Management.


Important Information


Read this guide completely before installing Mobility 6.2031 for Scanco Multi-Bin for Sage Production Management version . Before installing Mobility for Scanco Multi-Bin for Sage Production Management, install and register


- Sage 100 Standard, Sage 100 Advanced or Sage 100 Premium 2020 with Product Update 1, 2 or 3,
- Scanco Multi-Bin
- Sage Production Management, and
- Scanco Multi-Bin for Sage Production Management Enhancements.

Please refer to the Sage 100 Installation and System Administrator's Guide for information on installing Sage 100 Standard, Sage 100 Advanced or Sage 100 Premium and Sage 100 2020 Product Updates. Refer to the Sage Production Management Installation Guide on installing Sage Production Management. Refer to the Scanco Multi-Bin Installation guide for information on installing Scanco Multi-Bin. Refer to the Scanco Multi-Bin for Production Management Enhancements Installation Guide on installing Scanco Multi-Bin for Production Management Enhancements.

 **Warning:** Install Mobility 6.2031 for Scanco Multi-Bin for Sage Production Management into a parallel test Sage 100 environment. Performing a test upgrade or a test new install allows you to resolve issues that may occur during the live upgrade or live new install, reducing downtime and allows you to get a rough estimate of how long the upgrade process will take. Refer to the [Sage Knowledgebase article ID 101266](#) for more information. As not noted in the Sage Knowledgebase article before step 20, third party products must be re-installed after a migration.

 **Warning:** Mobility 6.2031 for Scanco Multi-Bin for Sage Production Management may not be compatible with non-Scanco third party products. If you use third-party products that integrate with your Sage product, check with the vendor of your third-party product to ensure their product is fully compatible with this release. If you integrate with other Sage products, check with your business partner or Sage to ensure that these components are compatible.

 **Warning:** When Scanco Multi-Bin for Sage Production Management is not installed in Sage 100 or was not purchased, refer to the Mobility for Sage Production Management installation guide. An installer that is specific for Scanco Multi-Bin for Sage Production Management must be used to install Mobility 6.2031 for Scanco Multi-Bin for Sage Production Management.

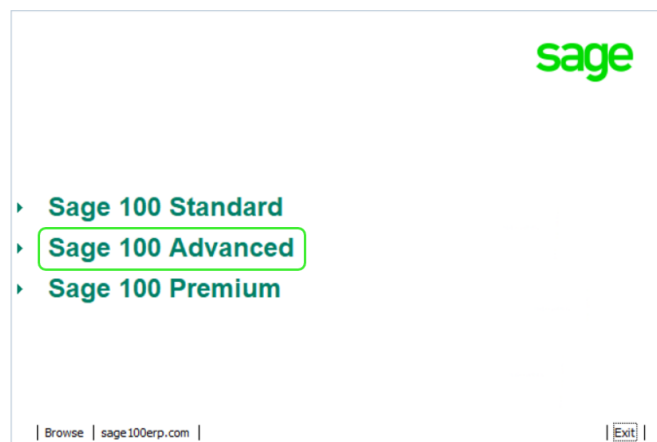
 **Note:** Please contact your authorized Sage Production Management partner or the Sage Support department at 866-996-7243 or <https://customers.sagenorthamerica.com> for assistance with Sage Production Management. Please contact Scanco Support at support@scanco.com for assistance with Mobility for Scanco Multi-Bin for Sage Production Management.

Mobility for Scanco Multi-Bin for Production Management

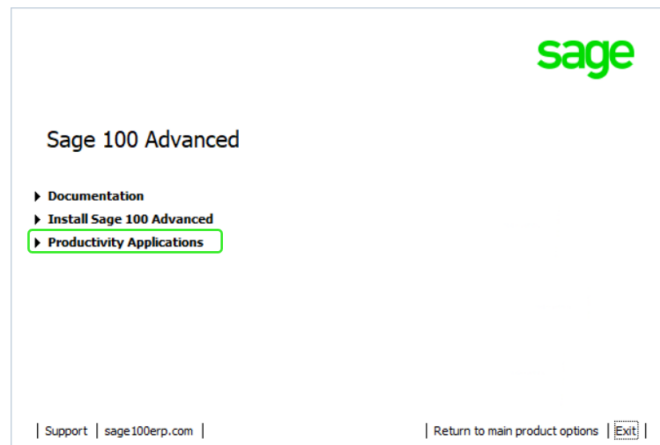
Pre-Installation Checklist

Complete the following pre-installation checklist prior to installing Mobility 6.2031 for Scanco Multi-Bin for Sage Production Management to ensure a successful installation.

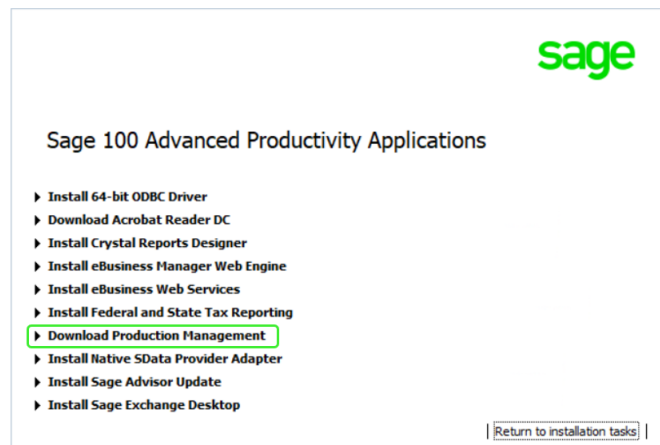
- ❑ Do **not** install Mobility 6.2031 for Scanco Multi-Bin for Sage Production Management when custom modifications exist on Sage or Scanco modified modules or products. Custom modifications must be retrofitted to the current Sage 100 version. Please contact your Sage partner, Sage Production Management partner or Scanco for information on how to obtain a quote for custom modifications to be retrofitted to Sage 100 2020 versions with Mobility 6.2031 for Scanco Multi-Bin for Sage Production Management.
- ❑ Do **not** install Mobility 6.2031 for Scanco Multi-Bin for Sage Production Management when extended solutions or third-party products are installed on the Sage 100 system. Please contact your Sage Production Management partner, the Sage Support department at 866-996-7243 or <https://customers.sagenorthamerica.com> or Scanco Support at support@scanco.com for information on evaluating extended solutions or third-party software.
- ❑ Confirm that the Sage 100 installed version is 6.20.0.1, 6.20.1.0, 6.20.2.0, or 6.20.3.0 for the Sage 100 Standard, Sage 100 Advanced or Sage 100 Premium system. Access Help menu > About Sage to review the currently installed Sage 100 version. To review additional information on the currently installed Sage 100 system in the Sage 100 System Information window, select File menu > Run. Type *info in the Program field. Select the OK button.
- ❑ Confirm that Scanco Multi-Bin 6.2001, 6.2011, 6.2021, or 6.2031 is installed.
- ❑ Confirm that Sage Production Management 6.20.0.1.0, 6.20.1.0.0, 6.20.2.0.0, or 6.20.3.0.0 is installed.
- ❑ Confirm that Scanco Multi-Bin for Sage Production Management Enhancements are installed.
- ❑ Backup the entire Sage 100 Standard, Sage 100 Advanced or Sage 100 Premium system, including programs and data files, after all data entry files are updated, and before installing Mobility 6.2031 for Scanco Multi-Bin for Sage Production Management.
- ❑ Download the Mobility 6.2031 for Scanco Multi-Bin for Sage Production Management installation file and specify registration information from <http://info.scanco.com/prod-mgmt-downloads> The Sage Production Management downloads page can be accessed from the Sage 100 2020 installation wizard.
 1. From the Sage 100 2020 installation Autorun screen, click a version of Sage 100.



2. From the Installation Tasks menu, click Productivity Applications.



3. Click Do Production Management to access the Sage Production Management downloads page.



Mobility for Scanco Multi-Bin for Sage Production Management Installation Checklists

New Installation of Sage 100 with Mobility for Scanco Multi-Bin for Sage Production Management

- Complete the Mobility for Scanco Multi-Bin for Sage Production Management pre-installation checklist.
- Install Sage 100 2020. Refer to the Sage 100 2020 Installation and System Administrator's Guide.
- Install Product Update 2 for Sage 100 2020.
- Run the Sage 100 workstation setup process on all applicable workstations. Refer to the Sage 100 2020 Installation and System Administrator's Guide.
- Install Scanco Multi-Bin 6.2001, 6.2011, 6.2021, or 6.2031. Refer to the Scanco Multi-Bin 6.2021 Installation Guide.
- If hot fixes are available on the Scanco Multi-Bin Downloads page for Scanco Multi-Bin, Scanco Multi-Bin hot fixes. Refer to the Scanco Multi-Bin Installation Guide.
- Install Sage Production Management 6.20.0.1.0, 6.20.1.0.0, 6.20.2.0.0, or 6.20.3.0.0. Refer to the Sage Production Management Installation Guide.
- If hot fixes are available on the Sage Production Management Downloads page for Sage Production Management, install Sage Production Management hot fixes. Refer to the Sage Production Management Installation Guide.

- ❑ Install Scanco Multi-Bin for Sage Production Management Enhancements. Refer to the Scanco Multi-Bin for Sage Production Management Installation Guide.
- ❑ If hot fixes are available on the Sage Production Management Downloads page for Scanco Multi-Bin for Sage Production Management, install Scanco Multi-Bin for Sage Production Management hot fixes. Refer to the Scanco Multi-Bin for Sage Production Management Installation Guide.
- ❑ Install Mobility 6.2031 for Scanco Multi-Bin for Sage Production Management. Refer to the Installing Mobility for Scanco Multi-Bin for Sage Production Management section on page 10.
- ❑ If hot fixes are available on the Sage Production Management Downloads page for Mobility 6.2031 for Scanco Multi-Bin for Sage Production Management, install Mobility 6.2031 for Scanco Multi-Bin for Sage Production Management hot fixes. Refer to page 16.
- ❑ Define role security from Library Master Main Role Maintenance. Refer to the Sage Production Management Installation Guide.
- ❑ Register Mobility for Scanco Multi-Bin for Sage Production Management from Library Master Setup menu > Scanco Product Registration. Refer to the Registering Mobility for Scanco Multi-Bin for Sage Production Management section on page 15.
- ❑ Activate the required and optional Sage 100 modules and the Sage Production Management module from Library Master Main menu > Company Information. The Mobility for Bar Code module must be activated when Scanco Warehouse 100 is to be used when Sage Production Management is installed in Sage 100. Refer to Activating Mobility for Bar Code on page 14.
- ❑ If not previously conducted when installing Scanco Multi-Bin and Sage Production Management, prepare Scanco Multi-Bin and Sage Production Management data for all companies including companies that do not have Scanco Multi-Bin or Sage Production Management activated. Refer to the Scanco Multi-Bin for Sage Production Management Installation Guide.
- ❑ Create and set up company data files for required and optional Sage 100 modules. Refer to the Creating Company Data Files for Sage 100 Modules section on page 14.
- ❑ If not previously conducted during the company conversion process from Company Information, access the Custom Office Utilities Menu and run the update customized panels by selecting Custom Office Utilities menu > Update Customized Panels to Current Level. Review the placement of all user-defined fields. Refer to the Sage 100 2020 Customer Upgrade Guide and the Sage 100 2020 Upgrade Checklist.
- ❑ Reset all grids.
- ❑ Verify the Sage 100 and Sage Production Management versions by accessing Production Management Setup menu > About Production Management. Refer to the About Production Management section in the Sage Production Management Installation Guide.
- ❑ Set up Sage Production Management options using the Production Management Setup Wizard. Access the setup wizard from Production Management Setup menu > Production Management Options.
- ❑ Access Production Management Mobility menu > Create Mfg Mobility Import Files. Select the Proceed button from the task window to create or convert Mobility for Sales Production Management data files.
- ❑ To use Scanco Warehouse 100 with Sage Production Management installed in Sage 100, set up the Mobility for Bar Code module by accessing Mobility for Bar Code Setup menu > Mobility for Bar Code Options.

Upgrading Sage 100 to 2020 with a New Installation of Production Management, Scanco Multi-Bin for Production Management, and Mobility for Scanco Multi-Bin for Production Management

- ❑ Complete the Mobility 6.2031 for Scanco Multi-Bin for Sage Production Management pre-installation checklist.
- ❑ Backup the entire Sage 100 Standard, Sage 100 Advanced or Sage 100 Premium system, including programs and data files, after all data entry files are updated, and before installing Mobility for Scanco Multi-Bin version.

- ❑ Conduct a parallel installation of Sage 100 2020 when upgrading from version 2019 or lower. Refer to the Sage 100 2020 Customer Upgrade Guide and the Sage 100 2020 Upgrade Checklist.
- ❑ Install Sage 100 2020 Product Update 1, 2, or 3 Refer to the Sage 100 2020 Customer Upgrade Guide and the Sage 100 2020 Upgrade Checklist.
- ❑ Run the Sage 100 workstation setup process on all applicable workstations. Refer to the Sage 100 2020 Installation and System Administrator's Guide.
- ❑ Migrate and convert Sage 100 data to the 2020 version. Refer to the Sage 100 2020 Installation and System Administrator's Guide.
- ❑ Install the Scanco Multi-Bin 2020 version. Refer to the Scanco Multi-Bin Installation Guide.
- ❑ Install the Sage Production Management 2020 version. Refer to the Sage Production Management installation checklists and the Installing Sage Production Management section in the Sage Production Management Installation Guide.
- ❑ If hot fixes are available on the Sage Production Management Downloads page for Sage Production Management version 6.20.2.0.0, install Sage Production Management 6.20.2.0.0 hot fixes. Refer to the Sage Production Management Installation Guide.
- ❑ Install Scanco Multi-Bin for Sage Production Management Enhancements. Refer to the Scanco Multi-Bin for Sage Production Management Enhancements Installation Guide.
- ❑ If hot fixes are available on the Sage Production Management Downloads page for Scanco Multi-Bin for Sage Production Management, install Scanco Multi-Bin for Sage Production Management hot fixes. Refer to the Scanco Multi-Bin for Sage Production Management Installation Guide.
- ❑ Install Mobility 6.2031 for Scanco Multi-Bin for Sage Production Management. Refer to the Installing Mobility for Sage Production Management section on page 10.
- ❑ If hot fixes are available on the Sage Production Management Downloads page for Mobility 6.2031 for Scanco Multi-Bin for Sage Production Management, install Mobility for Scanco Multi-Bin for Sage Production Management hot fixes. Refer to page 16.
- ❑ Register Sage Production Management, Scanco Multi-Bin, and Mobility for Scanco Multi-Bin for Sage Production Management from Library Master Setup menu > Scanco Product Registration. Refer to the Registering Mobility for Sage Production Management section on page 15.
- ❑ Back up all company data files before proceeding to the company conversion process.
- ❑ Run the data conversion process from Library Master Main menu > Company Information.
- ❑ Activate the required and optional Sage 100 modules and the Sage Production Management module from Library Master Main menu > Company Information. The Mobility for Bar Code module must be activated when Scanco Warehouse 100 is to be used when Sage Production Management is installed in Sage 100. Refer to Activating Mobility for Bar Code on page 14.
- ❑ Create and set up company data files for required and optional Sage 100 modules, including Production Management. Refer to the Creating Company Data Files for Sage Modules section on page 14.
- ❑ Define role security for Sage Production Management and Scanco Multi-Bin from Library Master Main menu > Role Maintenance.
- ❑ If not previously conducted when installing Scanco Multi-Bin and Sage Production Management, prepare Scanco Multi-Bin and Sage Production Management data for all companies including companies that do not have Scanco Multi-Bin or Sage Production Management activated. Refer to the Scanco Multi-Bin for Sage Production Management Installation Guide.
- ❑ If not previously conducted during the company conversion process from Company Information, access the Custom Office Utilities Menu and run the update customized panels by selecting Custom Office Utilities menu > Update Customized Panels to Current Level. Review the placement of all user-defined fields. Refer to the Sage 100 2020 Customer Upgrade Guide and the Sage 100 2020 Upgrade Checklist.
- ❑ Reset all grids.

- ❑ Verify the Sage 100 and Sage Production Management versions by accessing Production Management Setup menu > About Production Management. Refer to the About Production Management section in the Sage Production Management Installation Guide.
- ❑ Set up Sage Production Management options using the Production Management Setup Wizard. Access the setup wizard from Production Management Setup menu > Production Management Options.
- ❑ Access Production Management Mobility menu > Create Mfg Mobility Import Files. Select the Proceed button from the task window to create or convert Mobility for Sales Production Management data files.
- ❑ To use Scanco Warehouse 100 with Sage Production Management installed in Sage 100, set up the Mobility for Bar Code module by accessing Mobility for Bar Code Setup menu > Mobility for Bar Code Options.

Upgrading Sage 100, Scanco Multi-Bin, Production Management and Mobility for Scanco Multi-Bin for Production Management from 2020.0/2020.1/2020.2 to 2020.3

- ❑ Complete the Mobility for Scanco Multi-Bin for Sage Production Management pre-installation checklist.
- ❑ Install Sage 100 2020 Product Update 3. Refer to the Sage 100 2020 Customer Upgrade Guide and the Sage 100 2020 Upgrade Checklist.
- ❑ Install Scanco Multi-Bin 6.2031. Refer to the Scanco Multi-Bin Installation Guide.
- ❑ Install Sage Production Management 6.20.3.0.0. Refer to the Sage Production Management Installation Guide.
- ❑ If hot fixes are available on the Sage Production Management Downloads page for Sage Production Management version 6.20.3.0.0, install Sage Production Management 6.20.3.0.0 hot fixes. Refer to the Sage Production Management Installation Guide.
- ❑ Install Scanco Multi-Bin 6.2031 for Sage Production Management 6.20.3.0.0 Enhancements. Refer to the Scanco Multi-Bin for Sage Production Management Enhancements Installation Guide.
- ❑ If hot fixes are available on the Sage Production Management Downloads page for Scanco Multi-Bin 6.2031 for Sage Production Management version 6.20.3.0.0, install Scanco Multi-Bin 6.2021 for Sage Production Management 6.20.3.0.0 hot fixes. Refer to the Scanco Multi-Bin for Sage Production Management Installation Guide.
- ❑ Install Mobility 6.2031 for Scanco Multi-Bin 6.2031 for Sage Production Management 6.20.3.0.0. Refer to the Installing Mobility for Scanco Multi-Bin for Sage Production Management section on page 10.
- ❑ If hot fixes are available on the Sage Production Management Downloads page for Mobility 6.2031 for Scanco Multi-Bin for Sage Production Management, install Mobility 6.2021 for Scanco Multi-Bin for Sage Production Management hot fixes. Refer to page 16.
- ❑ Back up all company data files before proceeding to the company conversion process.
- ❑ Run the data conversion process from Library Master Company Information.
- ❑ If not previously conducted when installing Scanco Multi-Bin and Sage Production Management, prepare Scanco Multi-Bin 6.2031 and Sage Production Management 6.20.3.0.0 data for all companies including companies that do not have Scanco Multi-Bin or Sage Production Management activated. Refer to the Scanco Multi-Bin for Sage Production Management Installation Guide.
- ❑ Verify the Sage 100 and Sage Production Management versions by accessing Production Management Setup menu > About Production Management. The Sage 100 version should display as 6.20.2.0 and the Sage Production Management version should display as 6.20.3.0.0. Refer to the About Production Management section in the Sage Production Management Installation Guide.
- ❑ Access the Custom Office Utilities Menu and run the update customized panels by selecting Custom Office Utilities menu > Update Customized Panels to Current Level. Review the placement of all user-defined fields. Refer to the Sage 100 2020 Customer Upgrade Guide and the Sage 100 2020 Upgrade Checklist.

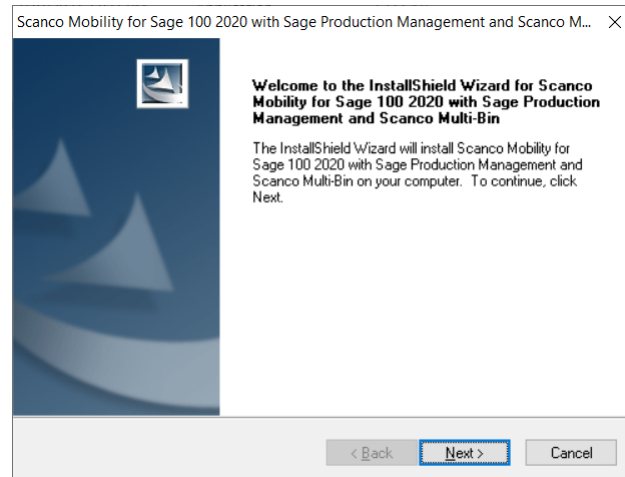
- ❑ Access Production Management Mobility menu > Create Mfg Mobility Import Files. Select the Proceed button from the task window to create or convert Mobility for Scanco Multi-Bin for Sage Production Management data files.
- ❑ Reset all grids.

Installing Mobility for Scanco Multi-Bin for Sage Production Management

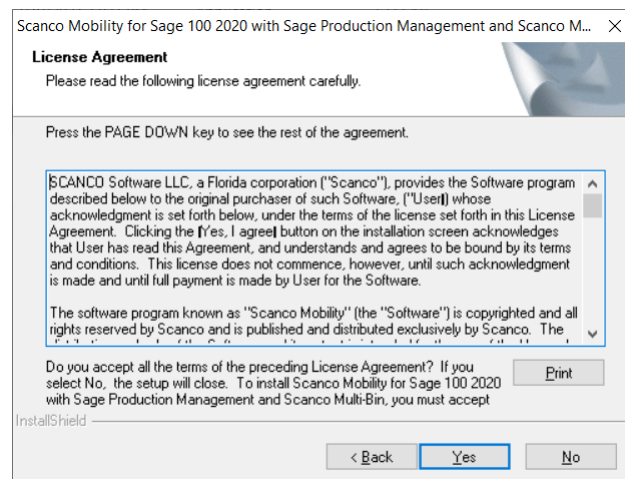
Conduct the following steps after Sage 100 2020, Product Update 1, 2 or 3 for Sage 100 2020, Scanco Multi-Bin, Sage Production Management, and Scanco Multi-Bin for Sage Production Management Enhancements are installed successfully.

How to Install Mobility for Scanco Multi-Bin for Sage Production Management

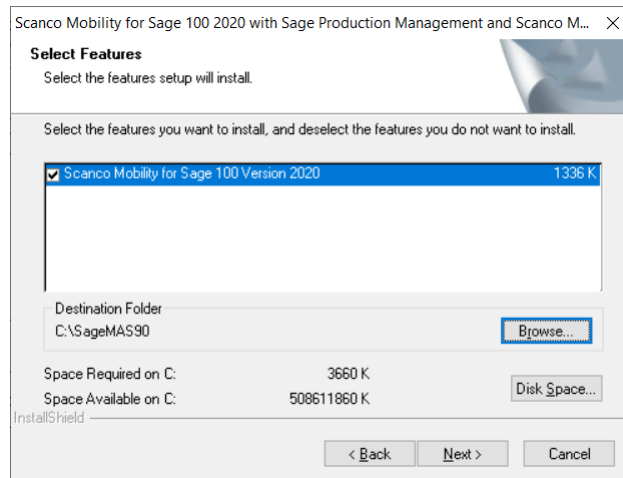
1. Download the BC62031_PM_MB.exe file from the Sage Production Management Downloads page at <http://info.scanco.com/prod-mgmt-downloads>.
2. Right click on the Mobility for Scanco Multi-Bin for Sage Production Management executable file.
3. Select Run as administrator.



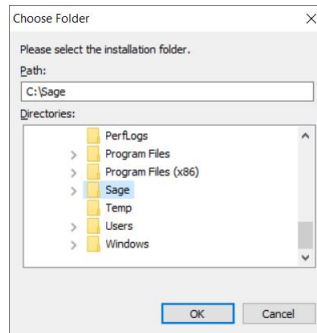
4. Select the Next button from the Mobility for Scanco Multi-Bin for Sage Production Management Welcome window.
5. Review the Mobility for Scanco Multi-Bin for Sage Production Management License Agreement.



6. Select the Yes button to agree to the Mobility for Scanco Multi-Bin for Sage Production Management License Agreement and to continue with the Mobility for Scanco Multi-Bin for Sage Production Management installation process.
7. Accept the defaulting check box field setting for Mobility for Sage Production Management or select the check box to install Mobility for Scanco Multi-Bin for Sage Production Management.



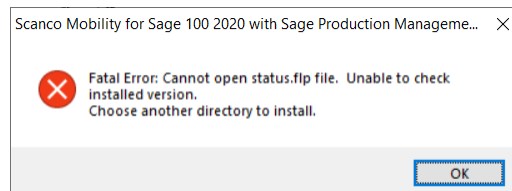
8. Accept the default location of Sage 100 or select the Browse button to specify the location of Sage 100. The Choose Folder window displays after the Browse button is selected.



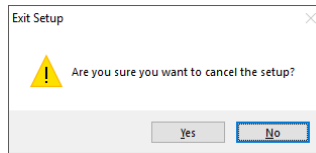
Specify the location of Sage 100 in the Path field. Select the OK button to return to the Select Features window.

9. Select the Next button from the Select Features window. The installed version of Sage 100 Standard, Sage 100 Advanced or Sage 100 Premium. Sage Production Management and Scanco Multi-Bin for Sage Production Management are validated.

When Sage 100 2020 has not been installed at the specified Sage 100 Standard, Sage 100 Advanced or Sage 100 Premium location, the following message displays.

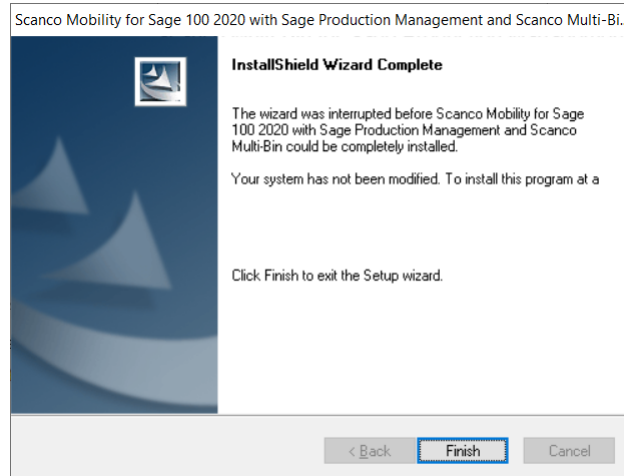


Select the OK button from the message. Select the Cancel button from the Select Features window. The following message displays.



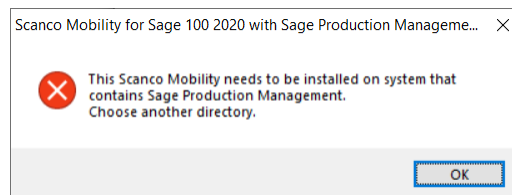
Select Yes in the message.

Select the Finish button from the InstallShield Wizard Complete window to cancel the Mobility for Scanco Multi-Bin for Sage Production Management installation process.



Install Sage 100 2020 Product Update 1, 2 or 3, Sage Production Management, and Scanco Multi-Bin for Sage Production Management, and then install Mobility for Scanco Multi-Bin for Sage Production Management.

Warning: When Sage Production Management and/or Scanco Multi-Bin is not installed in the selected location, the following message displays.



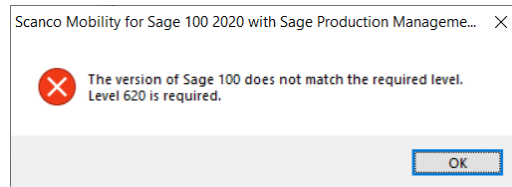
Select the OK button and modify the location to where Sage Production Management and Scanco Multi-Bin for Sage Production Management are installed or cancel the Mobility for Scanco Multi-Bin for Sage Production Management installation process and install Sage Production Management and Scanco Multi-Bin for Sage Production Management Enhancements.

Warning: When Sage 100 Operations Management is installed in the selected location, the following message displays.



Select the OK button and modify the destination folder to where Sage Production Management and Scanco Multi-Bin for Sage Production Management are installed. Sage Production Management, Scanco Multi-Bin for Sage Production Management and Mobility for Scanco Multi-Bin for Sage Production Management may not be installed in the same Sage 100 location containing Sage 100cloud Manufacturing.

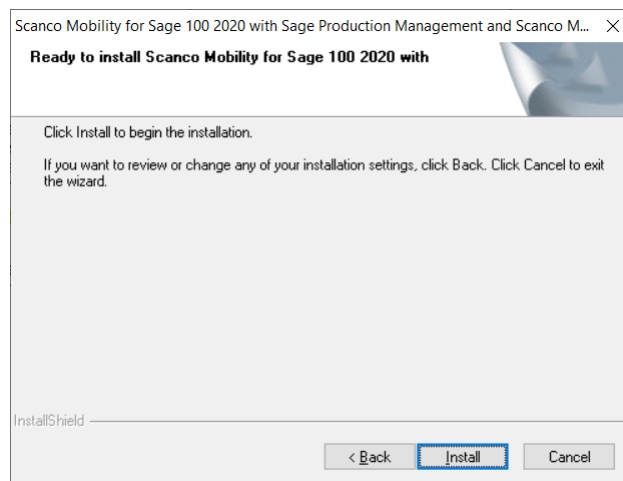
Warning: When Sage Production Management and/or Scanco Multi-Bin for Sage Production Management are installed but are not version 6.20, the following message displays.



Select OK and cancel the Mobility for Scanco Multi-Bin for Sage Production Management installation process. Install Sage Production Management and Scanco Multi-Bin 6.1029 for Sage Production Management. Then install Mobility for Scanco Multi-Bin for Sage Production Management.

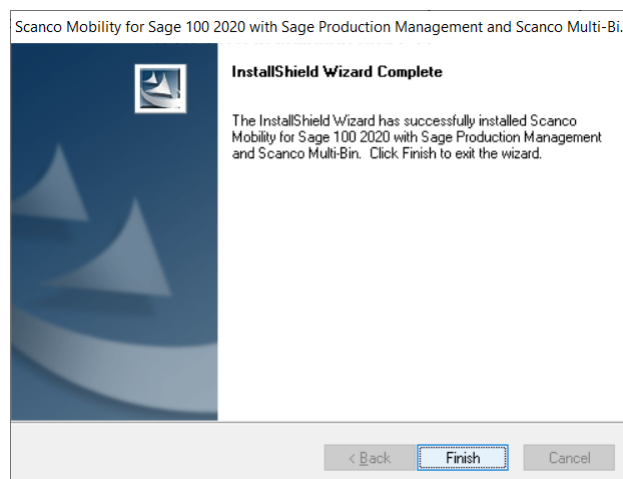
Warning: A unique Mobility installer is required for Scanco Multi-Bin for Sage Production Management.

10. Select the Install button from the following window to install Mobility for Scanco Multi-Bin for Sage Production Management.




Select the Back button to return to the Select Features window. Select the Cancel button, select Yes in the message *Are you sure you want to cancel the setup?* and the Finish button from the InstallShield Wizard Complete window to cancel the Mobility for Scanco Multi-Bin for Sage Production Management installation process.

11. Select the Finish button from the InstallShield Wizard Complete window to complete the Mobility for Scanco Multi-Bin for Sage Production Management installation process.




Activating Mobility for Bar Code

The Mobility for Bar Code module must be activated when Scanco Warehouse 100 is to be used with Sage 100 when Sage Production Management is installed.

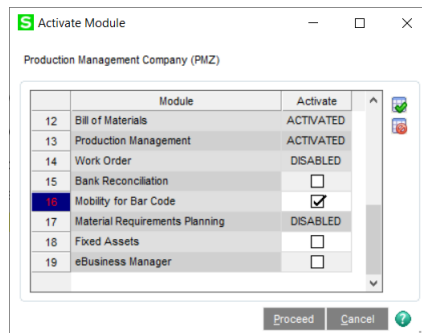
 **Note:** The Mobility 6.2031 for Sage Production Management for Scanco Multi-Bin executable file does not install the Mobility for Bar Code module programs to use Scanco Warehouse 100. The Mobility for Bar Code with Scanco Multi-Bin executable file must be obtained and installed. Contact Scanco Support to obtain the Mobility for Bar Code with Scanco Multi-Bin executable file.

The Mobility for Bar Code module is not required to be activated when Scanco Manufacturing 100 or the Sage Shop Floor applications are used with Sage 100 when Sage Production Management is installed.

 **Note:** A registration file must include the activation for Scanco Mobility for Manufacturing to utilize Scanco Manufacturing 100 or the Sage Shop Floor applications.

How to Activate Mobility for Bar Code

1. Access Library Master Main menu > Company Maintenance.
2. Enter the appropriate company code in the Company Code field.
3. Select the Activate button.
4. Select the Mobility for Bar Code Activate check box.

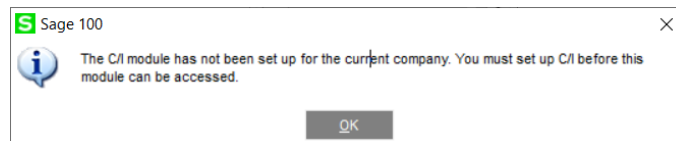


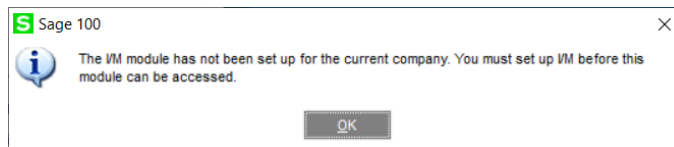
5. Select the Proceed button.

Creating Company Data Files for Required Sage 100 Modules

Company data files must be created prior to accessing Mobility for Scanco Multi-Bin for Sage Production Management tasks after Mobility for Scanco Multi-Bin for Sage Production Management is installed on an existing Sage 100 Standard, Sage 100 Advanced or Sage 100 Premium installation or after a new company has been created. Some Sage 100 modules are required to be installed to utilize Sage Production Management, Scanco Multi-Bin for Sage Production Management, and Sage Mobility for Scanco Multi-Bin for Sage Production Management. General Ledger, Common Information, and Inventory Management data files must be created prior to creating Sage Production Management company data files.

The following messages display when a Sage Production Management task is accessed before company data files are created for the Sage 100 Common Information or Inventory Management modules.



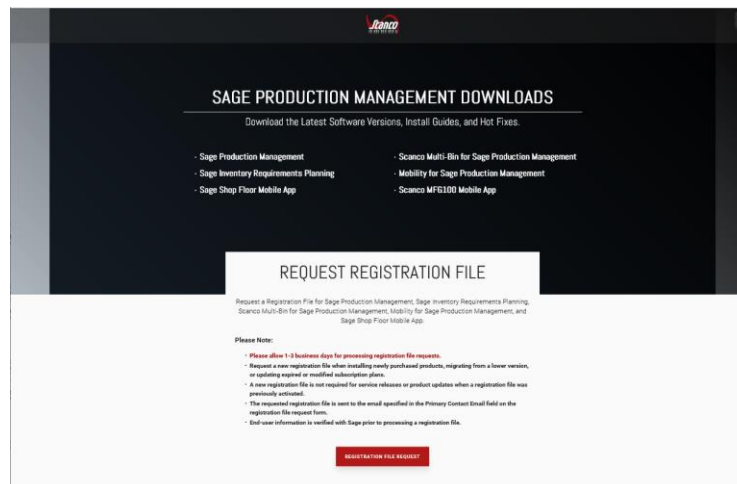


Click OK in the message. Access any Sage 100 Common Information or Inventory Management module task to access the Setup Wizard. Complete the Common Information or Inventory Management module setup process and then access Production Management Options to set up Sage Production Management.

Registering Mobility for Scanco Multi-Bin for Sage Production Management

How to Obtain Mobility for Scanco Multi-Bin for Sage Production Management Registration

1. Access the Production Management Downloads page <http://info.scanco.com/prod-mgmt-downloads>



2. Scroll down and click on Registration File Request.

REGISTRATION FILE REQUEST FORM

Please use the form below to request your Sage Production Management, Sage Inventory Requirements Planning, Scanco Multi-Bin for Sage Production Management, Mobility for Sage Production Management, and Sage Shop Floor Mobile App registration file.

NOTE: If you are a reseller requesting a registration file for an end-user, please complete all fields with the end-user's information.

CUSTOMER INFORMATION
This information will need to match the information on record with Sage for the requested instance and will be registered to listed company.

COMPANY NAME *	SAGE BUSINESS PARTNER
<input type="text"/>	<input type="text"/>
SAGE CUSTOMER NUMBER *	SAGE 100 SERIAL NUMBER *
<input type="text"/>	<input type="text"/>

1 of 10 new instances

SAGE VERSION (INCLUDING PRODUCT UPDATE) *	SAGE 100 SYSTEM ARCHITECTURE *
<input type="text" value="example: 2020.1"/>	<input type="text" value="(standard, advanced, premium)"/>

CONTACT INFORMATION
Required keys will be sent to this contact.

CONTACT NAME *	PHONE NUMBER *
<input type="text"/>	<input type="text"/>
CONTACT EMAIL *	
<input type="text" value="(Only file will be sent here)"/>	

3. Enter the required information in the Sage Production Management Registration form. Fields noted with an asterisk (*) are required.
4. Select the Sage Production Management, Scanco Multi-Bin, and Mobility for Manufacturing, Mobility for Manufacturing - Production Management check boxes. Select the check boxes for Sage Inventory

Requirements Planning, Sage Shop Floor User/Devices, and/or other modules or add on options when the module or add on was purchased.

WHICH MODULES DO YOU WISH TO REGISTER?

SCANCO MULTI-BIN

SAGE PRODUCTION MANAGEMENT

SAGE INVENTORY REQUIREMENTS PLANNING

MOBILITY FOR MANUFACTURING

MB *

Please choose products needed for Scanco MultiBin. Please note not all products work with all Scanco products or all Sage versions. If there is a conflict we will contact you.

MULTI-BIN STANDARD MULTI-BIN PREMIUM MULTI-BIN FOR OPERATIONS...

MULTI-BIN FOR WORKORDER... ON THE WATER LICENSE PLATING

WAVE BATCH ORDER SELECT... VENDOR LOT/EXPIRATION DA... IN-TRANSIT

CATCH WEIGHT


MOBILITY FOR MANUFACTURING *

Please chose the module for which Mobility is needed. Note: Mobility for Barcode is licensed through Sage, not Scanco.

MOBILITY FOR MANUFACTURING - OPERATIONS MANAGEMENT


MOBILITY FOR MANUFACTURING - PRODUCTION MANAGEMENT

5. Select the Submit button.

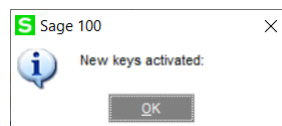
 **Note:** Please allow 1-3 business days for processing Mobility for Scanco Multi-Bin for Sage Production Management registration requests. The Mobility for Scanco Multi-Bin for Sage Production Management registration file is sent to the email specified in the Primary Contact Email field on the Sage Production Management Registration form.

How to Register Mobility for Scanco Multi-Bin for Sage Production Management

1. When a license registration file is received via email, place the registration text file at ...\\MAS90\\Scanco in the location where Sage 100 is installed.

 **Note:** Submit registration information before downloading from the Sage Production Management Downloads page and installing Mobility for Scanco Multi-Bin for Sage Production Management.

2. Access Library Master Setup menu > Scanco Product Registration.
3. Verify the correct Sage 100 Serial number and User Licenses displays.
4. Select the Activate button.
5. Select OK in the *New keys activated.* message.



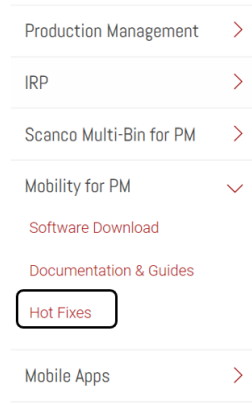
6. Verify Activated displays in the Status field for the Scanco Mobility for MFG product code record.
7. Select the Close button.

Mobility for Scanco Multi-Bin Production Management Hot Fixes

Occasionally hot fixes are required to be installed after installing Mobility for Scanco Multi-Bin for Sage Production Management. Access Mobility for Scanco Multi-Bin for Production Management hot fixes from the Sage Production Management Downloads page <http://info.scanco.com/prod-mgmt-downloads>

How to Install Mobility for Scanco Multi-Bin for Sage Production Management Hot Fixes

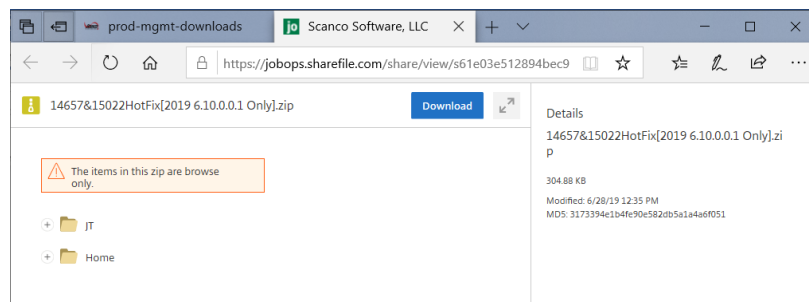
1. Access the Sage Production Management Downloads page <http://info.scanco.com/prod-mgmt-downloads>
2. Click on Mobility for PM menu.
3. Click on Hot Fixes.



4. Review the available hot fixes for Mobility for Scanco Multi-Bin for Sage Production Management for the currently installed version.

Warning: Hot fixes are version specific. Only install hot fixes for the current Mobility for Scanco Multi-Bin for Sage Production Management version.

5. Click on a hot fix link to be directed to the download file.



6. Click on the Download button.
7. Specify the location to download the hot fix.
8. Extract the hot fix file to the MAS90 directory where Sage 100 and Mobility for Scanco Multi-Bin for Sage Production Management are installed.

Warning: If the hot fix zip file is extracted to a location other than the MAS90 directory, the hot fix programs must be copied to the file location specified in the hot fix zip file.

9. Select to replace the files in the destination if the hot file was extracted to the MAS90 directory where Sage 100 and Mobility for Scanco Multi-Bin for Sage Production Management are installed. The hot fix program is now located in the correct directory in the Sage 100 and Mobility for Scanco Multi-Bin for Sage Production Management installation.
10. Review the document(s) included in the hot fix download file. Descriptions and instructions are included in this documentation.

Downloads > 14657&15022HotFix[2019 6.10.0.0.1 Only] (1) > Home > Hot Fix

Search Hot Fix

Name	Date modified	Type	Size
14657	7/10/2019 9:47 AM	PDF File	111 KB
15022			

14657.pdf - Adobe Acrobat Reader DC

File Edit View Window Help

Home Tools 14657.pdf x

1 / 1 78.3%

Production Management 2019 6.10.0.0.1 Program Fix

Product Affected: Production Management 2019 General Release (6.10.0.0.1)
 Program Fix Number: 14657
 Date: May 20, 2019

Symptoms
 Convert Work Order Data: Department number converted to JT_TransactionHistory.EmployeeNo field for Work Order labor transactions

Steps to Duplicate:
 Convert Work Order data that contains labor entries for open work orders.
 Review JT_TransactionHistory.EmployeeNo. The department number is being stored with the employee number in the EmployeeNo field.

Resolution
 Production Management 2019 6.10.0.0.1 Program Fix 146577 will correct the issue

Contents
 JT_ConvertWOtoWT.pvc

Notes
 Install the Program Fix on the Sage 100 2019 server that includes the installation of Production Management