



sage Production
Management

Mobility for Scanco Multi-Bin for Sage Production Management 2021

Installation Guide

Sage 100 Version 7.00.0.0 & 7.00.1.0

Sage Production Management Version 7.00.0.0.0 & 7.00.1.0.0

Scanco Multi-Bin 7.0011 for Sage Production Management

Mobility for Scanco Multi-Bin for Sage Production Management Version 7.0011

August 2021

© Copyright 2021 All rights reserved. Production Management is a trademark of Scanco Software, LLC. Sage, the Sage logos, and the Sage product and service names mentioned herein are registered trademarks or trademarks of Sage Software, Inc., or its affiliated entities. All other trademarks are the property of their respective owners. The contents herein are summary in nature and subject to change without notification from Scanco Software, LLC. Scanco Software, LLC, accepts no responsibility for inadvertent errors or omissions.

Scanco Software, LLC
1000 N Tamiami Trail
Suite 201
Nokomis, FL 34275

Contents

Introduction to Mobility for Scanco Multi-Bin for Sage Production Management 4

About this Guide 4

Important Information 4

Mobility for Scanco Multi-Bin for Production Management Pre-Installation Checklist 5

Mobility for Scanco Multi-Bin for Sage Production Management Installation Checklists 7

New Installation of Sage 100 with Mobility for Scanco Multi-Bin for Sage Production Management 7

Upgrading Sage 100 to 2021 with a New Installation of Production Management, Scanco Multi-Bin for Production Management, and Mobility for Scanco Multi-Bin for Production Management 8

Upgrading Sage 100, Scanco Multi-Bin, Production Management and Mobility for Scanco Multi-Bin for Production Management from 2021.0/2021.1 to 2021.2 9

Installing Mobility for Scanco Multi-Bin for Sage Production Management 10

How to Install Mobility for Scanco Multi-Bin for Sage Production Management 10

Activating Mobility for Bar Code 14

How to Activate Mobility for Bar Code 15

Creating Company Data Files for Required Sage 100 Modules 15

Registering Mobility for Scanco Multi-Bin for Sage Production Management 16

How to Obtain Mobility for Scanco Multi-Bin for Sage Production Management Registration 16

How to Register Mobility for Scanco Multi-Bin for Sage Production Management 17

Mobility for Scanco Multi-Bin Production Management Hot Fixes 17

How to Install Mobility for Scanco Multi-Bin for Sage Production Management Hot Fixes 18

Introduction to Mobility for Scanco Multi-Bin for Sage Production Management

About this Guide


This guide provides the information necessary for installing Mobility for Scanco Multi-Bin for Sage Production Management.


Important Information


Read this guide completely before installing Mobility 7.0011 for Scanco Multi-Bin for Sage Production Management version. Before installing Mobility for Scanco Multi-Bin for Sage Production Management, install and register


- Sage 100 Standard, Sage 100 Advanced or Sage 100 Premium 2021
- Sage 100 2021 Product Update 1 if installing Scanco Multi-Bin version 7.0011 and Sage Production Management 7.00.1.0.0
- Scanco Multi-Bin 7.0001 or 7.0011
- Sage Production Management 7.00.0.0.0 or 7.00.1.0.0, and
- Scanco Multi-Bin 7.0011 for Sage Production Management Enhancements.

Please refer to the Sage 100 Installation and System Administrator's Guide for information on installing Sage 100 Standard, Sage 100 Advanced or Sage 100 Premium and Sage 100 2021 Product Update 1. Refer to the Sage Production Management 7.00.0.0.0 or 7.00.1.0.0 Installation Guide on installing Sage Production Management. Refer to the Scanco Multi-Bin 7.0001 or 7.0011 Installation guide for information on installing Scanco Multi-Bin. Refer to the Scanco Multi-Bin 7.0001 or 7.0011 for Production Management Enhancements Installation Guide on installing Scanco Multi-Bin 7.0001 or 7.0011 for Production Management Enhancements.

 **Warning:** Install Mobility 7.0011 for Scanco Multi-Bin for Sage Production Management into a parallel test Sage 100 environment. Performing a test upgrade or a test new install allows you to resolve issues that may occur during the live upgrade or live new install, reducing downtime and allows you to get a rough estimate of how long the upgrade process will take. Refer to the [Sage Knowledgebase article ID 101266](#) for more information. As not noted in the Sage Knowledgebase article before step 20, third party products must be re-installed after a migration.

 **Warning:** Mobility 7.0011 for Scanco Multi-Bin for Sage Production Management may not be compatible with non-Scanco third party products. If you use third-party products that integrate with your Sage product, check with the vendor of your third-party product to ensure their product is fully compatible with this release. If you integrate with other Sage products, check with your business partner or Sage to ensure that these components are compatible.

 **Warning:** When Scanco Multi-Bin for Sage Production Management is not installed in Sage 100 or was not purchased, refer to the Mobility for Sage Production Management installation guide. An installer that is specific for Scanco Multi-Bin for Sage Production Management must be used to install Mobility 7.0011 for Scanco Multi-Bin for Sage Production Management.

 **Note:** Please contact your authorized Sage Production Management partner or the Sage Support department at 866-996-7243 or <https://customers.sagenorthamerica.com> for assistance with Sage Production Management. Please contact Scanco Support at support@scanco.com for assistance with Mobility for Scanco Multi-Bin for Sage Production Management.

Mobility for Scanco Multi-Bin for Production Management

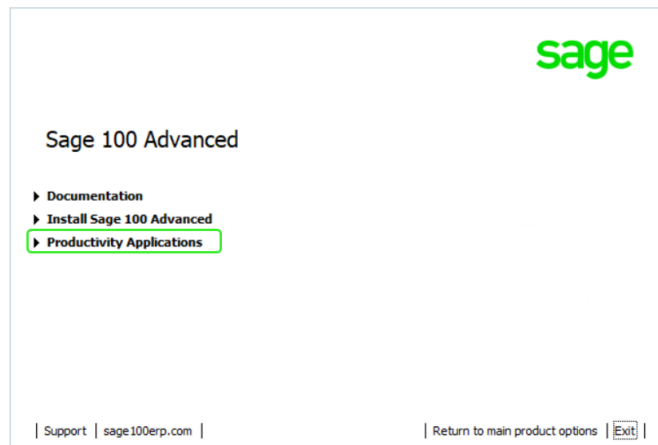
Pre-Installation Checklist

Complete the following pre-installation checklist prior to installing Mobility 7.0011 for Scanco Multi-Bin for Sage Production Management to ensure a successful installation.

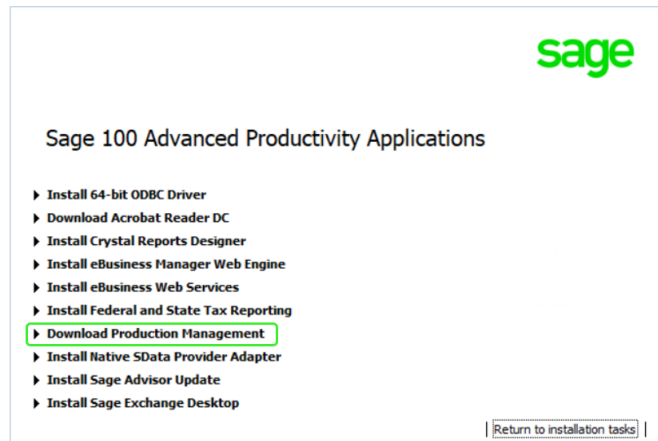
- ❑ Do **not** install Mobility 7.0011 for Scanco Multi-Bin for Sage Production Management when custom modifications exist on Sage or Scanco modified modules or products. Custom modifications must be retrofitted to the current Sage 100 version. Please contact your Sage partner, Sage Production Management partner or Scanco for information on how to obtain a quote for custom modifications to be retrofitted to Sage 100 version 7.00.0.0 or 7.00.1.0 with Mobility 7.0011 for Scanco Multi-Bin for Sage Production Management.
- ❑ Do **not** install Mobility 7.0011 for Scanco Multi-Bin for Sage Production Management when extended solutions or third-party products are installed on the Sage 100 system. Please contact your Sage Production Management partner, the Sage Support department at 866-996-7243 or <https://customers.sagenorthamerica.com> or Scanco Support at support@scanco.com for information on evaluating extended solutions or third-party software.
- ❑ Confirm that the Sage 100 installed version is 7.00.0.0 for the Sage 100 Standard, Sage 100 Advanced or Sage 100 Premium system. Access Help menu > About Sage to review the currently installed Sage 100 version. To review additional information on the currently installed Sage 100 system in the Sage 100 System Information window, select File menu > Run. Type *info in the Program field. Select the OK button.
- ❑ Confirm that Scanco Multi-Bin 7.0001 or 7.0011 is installed.
- ❑ Confirm that Sage Production Management 7.00.0.0.0 or 7.00.1.0.0 is installed.
- ❑ Confirm that Scanco Multi-Bin 7.0001 or 7.0011 for Sage Production Management 7.00.0.0.0 or 7.00.1.0.0 Enhancements are installed.
- ❑ Backup the entire Sage 100 Standard, Sage 100 Advanced or Sage 100 Premium system, including programs and data files, after all data entry files are updated, and before installing Mobility 7.0011 for Scanco Multi-Bin for Sage Production Management.
- ❑ Download the Mobility 7.0011 for Scanco Multi-Bin for Sage Production Management installation file and specify registration information from <http://info.scanco.com/prod-mgmt-downloads>. The Sage Production Management downloads page can be accessed from the Sage 100 2021 installation wizard.
 1. From the Sage 100 2021 installation Autorun screen, click a version of Sage 100.



2. From the Installation Tasks menu, click Productivity Applications.



3. Click Do Production Management to access the Sage Production Management downloads page.



Mobility for Scanco Multi-Bin for Sage Production Management Installation Checklists

New Installation of Sage 100 with Mobility for Scanco Multi-Bin for Sage Production Management

- ❑ Complete the Mobility for Scanco Multi-Bin for Sage Production Management pre-installation checklist.
- ❑ Install Sage 100 2021. Refer to the Sage 100 2021 Installation and System Administrator's Guide.
- ❑ Install Product Update 1 for Sage 100 2021.
- ❑ Run the Sage 100 workstation setup process on all applicable workstations. Refer to the Sage 100 2021 Installation and System Administrator's Guide.
- ❑ Install Scanco Multi-Bin 7.0001 or 7.0011. Refer to the Scanco Multi-Bin Installation Guide.
- ❑ If hot fixes are available on the Scanco Multi-Bin Downloads page for Scanco Multi-Bin 7.0001 or 7.0011, hot fixes. Refer to the Scanco Multi-Bin Installation Guide.
- ❑ Install Sage Production Management 7.00.0.0.0 or 7.00.1.0.0. Refer to the Sage Production Management Installation Guide.
- ❑ If hot fixes are available on the Sage Production Management Downloads page for Sage Production Management version 7.00.0.0.0 or 7.00.1.0.0, install Sage Production Management hot fixes. Refer to the Sage Production Management Installation Guide.
- ❑ Install Scanco Multi-Bin 7.0001 or 7.0011 for Sage Production Management 7.00.0.0.0 or 7.00.1.0.0 Enhancements. Refer to the Scanco Multi-Bin for Sage Production Management Installation Guide.
- ❑ If hot fixes are available on the Sage Production Management Downloads page for Scanco Multi-Bin 7.0001 or 7.0011 for Sage Production Management, install Scanco Multi-Bin 7.0001 or 7.0011 for Sage Production Management hot fixes. Refer to the Scanco Multi-Bin for Sage Production Management Installation Guide.
- ❑ Install Mobility 7.0011 for Scanco Multi-Bin for Sage Production Management. Refer to the Installing Mobility for Scanco Multi-Bin for Sage Production Management section on page 10.
- ❑ If hot fixes are available on the Sage Production Management Downloads page for Mobility 7.0011 for Scanco Multi-Bin 7.0001 or 7.0011 for Sage Production Management 7.00.0.0.0 or 7.00.1.0.0, install Mobility 7.0011 for Scanco Multi-Bin for Sage Production Management hot fixes. Refer to page 17.
- ❑ Define role security from Library Master Main Role Maintenance. Refer to the Sage Production Management Installation Guide.
- ❑ Register Mobility 7.0011 for Scanco Multi-Bin for Sage Production Management from Library Master Setup menu > Scanco Product Registration. Refer to the Registering Mobility for Scanco Multi-Bin for Sage Production Management section on page 16.
- ❑ Activate the required and optional Sage 100 modules and the Sage Production Management module from Library Master Main menu > Company Information. The Mobility for Bar Code module must be activated when Scanco Warehouse 100 is to be used when Sage Production Management is installed in Sage 100. Refer to Activating Mobility for Bar Code on page 14.
- ❑ If not previously conducted when installing Scanco Multi-Bin and Sage Production Management, prepare Scanco Multi-Bin and Sage Production Management data for all companies including companies that do not have Scanco Multi-Bin or Sage Production Management activated. Refer to the Scanco Multi-Bin for Sage Production Management Installation Guide.
- ❑ Create and set up company data files for required and optional Sage 100 modules. Refer to the Creating Company Data Files for Sage 100 Modules section on page 14.
- ❑ If not previously conducted during the company conversion process from Company Information, access the Custom Office Utilities Menu and run the update customized panels by selecting Custom Office Utilities menu > Update Customized Panels to Current Level. Review the placement of all user-defined fields. Refer to the Sage 100 2021 Customer Upgrade Guide and the Sage 100 2021 Upgrade Checklist.

- ❑ Reset all grids.
- ❑ Verify the Sage 100 and Sage Production Management versions by accessing Production Management Setup menu > About Production Management. Refer to the About Production Management section in the Sage Production Management Installation Guide.
- ❑ Set up Sage Production Management options using the Production Management Setup Wizard. Access the setup wizard from Production Management Setup menu > Production Management Options.
- ❑ Access Production Management Mobility menu > Create Mfg Mobility Import Files. Select the Proceed button from the task window to create or convert Mobility for Sales Production Management data files.
- ❑ To use Scanco Warehouse 100 with Sage Production Management installed in Sage 100, set up the Mobility for Bar Code module by accessing Mobility for Bar Code Setup menu > Mobility for Bar Code Options.

Upgrading Sage 100 to 2021 with a New Installation of Production Management, Scanco Multi-Bin for Production Management, and Mobility for Scanco Multi-Bin for Production Management

- ❑ Complete the Mobility 7.0011 for Scanco Multi-Bin for Sage Production Management 7.00.0.0.0 pre-installation checklist.
- ❑ Backup the entire Sage 100 Standard, Sage 100 Advanced or Sage 100 Premium system, including programs and data files, after all data entry files are updated, and before installing Mobility for Scanco Multi-Bin version.
- ❑ Conduct a parallel installation of Sage 100 2021 when upgrading from version 2019 or lower. Refer to the Sage 100 2021 Customer Upgrade Guide and the Sage 100 2021 Upgrade Checklist.
- ❑ Install Sage 100 2021 Product Update 1. Refer to the Sage 100 2021 Customer Upgrade Guide and the Sage 100 2021 Upgrade Checklist.
- ❑ 202120212021Run the Sage 100 workstation setup process on all applicable workstations. Refer to the Sage 100 2021 Installation and System Administrator's Guide.
- ❑ Migrate and convert Sage 100 data to 2021.0 or 2021.1 version 7.00.0.0 or 7.00.1.0. Refer to the Sage 100 2021 Installation and System Administrator's Guide.
- ❑ Install Scanco Multi-Bin 7.0001 or 7.0011. Refer to the Scanco Multi-Bin Installation Guide.
- ❑ Install Sage Production Management 7.00.0.0.0 or 7.00.1.0.0. Refer to the Sage Production Management installation checklists and the Installing Sage Production Management section in the Sage Production Management Installation Guide.
- ❑ If hot fixes are available on the Sage Production Management Downloads page for Sage Production Management version 7.00.0.0.0 or 7.00.1.0.0, install Sage Production Management hot fixes. Refer to the Sage Production Management Installation Guide.
- ❑ Install Scanco Multi-Bin 7.0001 or 7.0011 for Sage Production Management Enhancements. Refer to the Scanco Multi-Bin for Sage Production Management Enhancements Installation Guide.
- ❑ If hot fixes are available on the Sage Production Management Downloads page for Scanco Multi-Bin 7.0001 or 7.0011 for Sage Production Management, install Scanco Multi-Bin 7.0001 or 7.0011 for Sage Production Management hot fixes. Refer to the Scanco Multi-Bin for Sage Production Management Installation Guide.
- ❑ Install Mobility 7.0011 for Scanco Multi-Bin for Sage Production Management. Refer to the Installing Mobility for Sage Production Management section on page 10.
- ❑ If hot fixes are available on the Sage Production Management Downloads page for Mobility 7.0011 for Scanco Multi-Bin for Sage Production Management version, install Mobility 7.0011 for Scanco Multi-Bin for Sage Production Management hot fixes. Refer to page 17.

- ❑ Register Sage Production Management 7.00.0.0.0 or 7.00.1.0.0, Scanco Multi-Bin 7.0011 or 7.0011, and Mobility 7.0011 for Scanco Multi-Bin for Sage Production Management from Library Master Setup menu > Scanco Product Registration. Refer to the Registering Mobility for Sage Production Management section on page 16.
- ❑ Back up all company data files before proceeding to the company conversion process.
- ❑ Run the data conversion process from Library Master Main menu > Company Information.
- ❑ Activate the required and optional Sage 100 modules and the Sage Production Management module from Library Master Main menu > Company Information. The Mobility for Bar Code module must be activated when Scanco Warehouse 100 is to be used when Sage Production Management is installed in Sage 100. Refer to Activating Mobility for Bar Code on page 14.
- ❑ Create and set up company data files for required and optional Sage 100 modules, including Production Management. Refer to the Creating Company Data Files for Sage Modules section on page 14.
- ❑ Define role security for Sage Production Management and Scanco Multi-Bin from Library Master Main menu > Role Maintenance.
- ❑ If not previously conducted when installing Scanco Multi-Bin and Sage Production Management, prepare Scanco Multi-Bin 7.0001 or 7.0011 and Sage Production Management 7.00.0.0.0 or 7.00.1.0.0 data for all companies including companies that do not have Scanco Multi-Bin or Sage Production Management activated. Refer to the Scanco Multi-Bin for Sage Production Management Installation Guide.
- ❑ If not previously conducted during the company conversion process from Company Information, access the Custom Office Utilities Menu and run the update customized panels by selecting Custom Office Utilities menu > Update Customized Panels to Current Level. Review the placement of all user-defined fields. Refer to the Sage 100 2021 Customer Upgrade Guide and the Sage 100 2021 Upgrade Checklist.
- ❑ Reset all grids.
- ❑ Verify the Sage 100 and Sage Production Management versions by accessing Production Management Setup menu > About Production Management. Refer to the About Production Management section in the Sage Production Management Installation Guide.
- ❑ Set up Sage Production Management options using the Production Management Setup Wizard. Access the setup wizard from Production Management Setup menu > Production Management Options.
- ❑ Access Production Management Mobility menu > Create Mfg Mobility Import Files. Select the Proceed button from the task window to create or convert Mobility for Sales Production Management data files.
- ❑ To use Scanco Warehouse 100 with Sage Production Management installed in Sage 100, set up the Mobility for Bar Code module by accessing Mobility for Bar Code Setup menu > Mobility for Bar Code Options.

Upgrading Sage 100, Scanco Multi-Bin, Production Management and Mobility for Scanco Multi-Bin for Production Management from 2021.0/2021.1 to 2021.2

- ❑ Complete the Mobility for Scanco Multi-Bin for Sage Production Management pre-installation checklist.
- ❑ Install Sage 100 2021 Product Update 1 if installing Scanco Multi-Bin 7.0011 and Sage Production Management 7.00.1.0.0. Refer to the Sage 100 2021 Customer Upgrade Guide and the Sage 100 2021 Upgrade Checklist.
- ❑ Install Scanco Multi-Bin 7.0001 or 7.0011. Refer to the Scanco Multi-Bin Installation Guide.
- ❑ Install Sage Production Management 7.00.0.0.0 or 7.00.1.0.0. Refer to the Sage Production Management Installation Guide.
- ❑ If hot fixes are available on the Sage Production Management Downloads page for Sage Production Management version 7.00.0.0.0 or 7.00.1.0.0, install Sage Production Management hot fixes. Refer to the Sage Production Management Installation Guide.

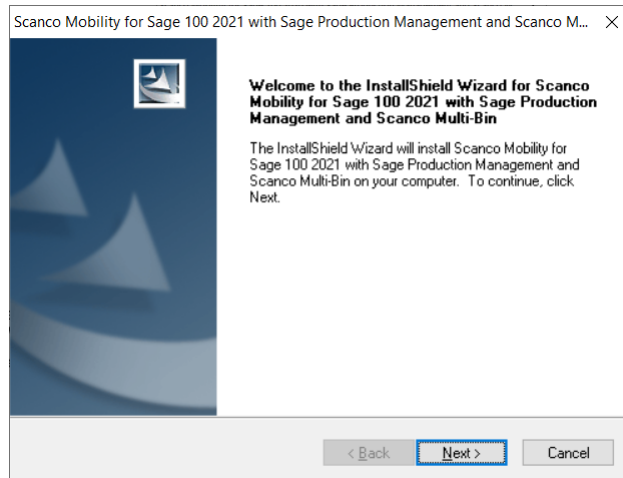
- ❑ Install Scanco Multi-Bin 7.0001 or 7.0011 for Sage Production Management Enhancements. Refer to the Scanco Multi-Bin for Sage Production Management Enhancements Installation Guide.
- ❑ If hot fixes are available on the Sage Production Management Downloads page for Scanco Multi-Bin 7.0001 or 7.0011 for Sage Production Management version 7.00.0.0.0 or 7.00.1.0.0, install Scanco Multi-Bin 7.0001 or 7.0011 for Sage Production Management hot fixes. Refer to the Scanco Multi-Bin for Sage Production Management Installation Guide.
- ❑ Install Mobility 7.0011 for Scanco Multi-Bin for Sage Production Management. Refer to the Installing Mobility for Scanco Multi-Bin for Sage Production Management section on page 10.
- ❑ If hot fixes are available on the Sage Production Management Downloads page for Mobility 7.0011 for Scanco Multi-Bin for Sage Production Management, install Mobility 7.0011 for Scanco Multi-Bin for Sage Production Management hot fixes. Refer to page 17.
- ❑ Back up all company data files before proceeding to the company conversion process.
- ❑ Run the data conversion process from Library Master Company Information.
- ❑ If not previously conducted when installing Scanco Multi-Bin and Sage Production Management, prepare Scanco Multi-Bin and Sage Production Management data for all companies including companies that do not have Scanco Multi-Bin or Sage Production Management activated. Refer to the Scanco Multi-Bin for Sage Production Management Installation Guide.
- ❑ Verify the Sage 100 and Sage Production Management versions by accessing Production Management Setup menu > About Production Management. The Sage 100 version should display as 7.00.0.0 or 7.00.1.0 and the Sage Production Management version should display as 7.00.0.0.0 or 7.00.1.0.0. Refer to the About Production Management section in the Sage Production Management Installation Guide.
- ❑ Access the Custom Office Utilities Menu and run the update customized panels by selecting Custom Office Utilities menu > Update Customized Panels to Current Level. Review the placement of all user-defined fields. Refer to the Sage 100 2021 Customer Upgrade Guide and the Sage 100 2021 Upgrade Checklist.
- ❑ Access Production Management Mobility menu > Create Mfg Mobility Import Files. Select the Proceed button from the task window to create or convert Mobility for Scanco Multi-Bin for Sage Production Management data files.
- ❑ Reset all grids.

Installing Mobility for Scanco Multi-Bin for Sage Production Management

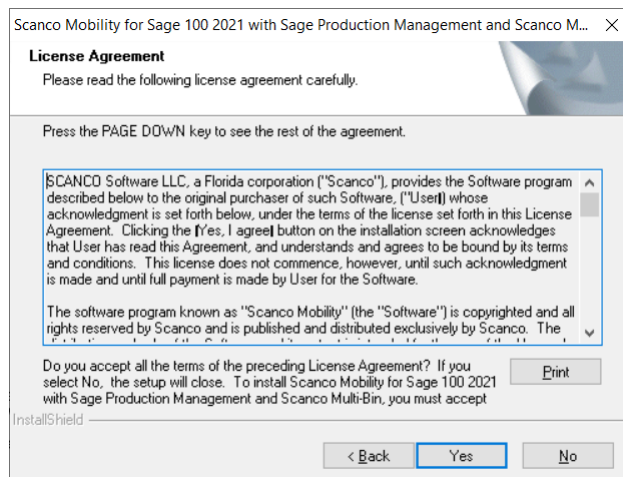
Conduct the following steps after Sage 100 2021, Product Update 1 for Sage 100 2021 when Scanco Multi-Bin version 7.0011 and Sage Production Management 7.00.1.0.0 are to be installed, Scanco Multi-Bin 7.0001 or 7.0011, Sage Production Management 7.00.0.0.0 or 7.00.1.0.0, and Scanco Multi-Bin for Sage Production Management 7.00.0.0.0 or 7.00.1.0.0 Enhancements are installed successfully.

How to Install Mobility for Scanco Multi-Bin for Sage Production Management

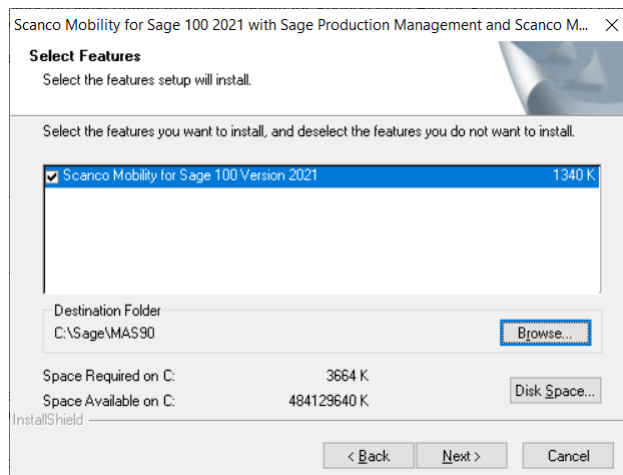
1. Download the BC70011_PM_MB.exe file from the Sage Production Management Downloads page at <http://info.scanco.com/prod-mgmt-downloads>.
2. Right click on the Mobility for Scanco Multi-Bin for Sage Production Management executable file.
3. Select Run as administrator.



4. Select the Next button from the Mobility for Scanco Multi-Bin for Sage Production Management Welcome window.
5. Review the Mobility for Scanco Multi-Bin for Sage Production Management License Agreement.

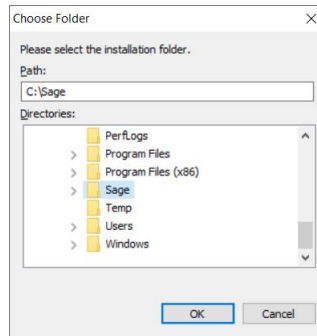


6. Select the Yes button to agree to the Mobility for Scanco Multi-Bin for Sage Production Management License Agreement and to continue with the Mobility for Scanco Multi-Bin for Sage Production Management installation process.
7. Accept the defaulting check box field setting for Mobility for Sage Production Management or select the check box to install Mobility for Scanco Multi-Bin for Sage Production Management.



8. Accept the default location of Sage 100 or select the Browse button to specify the location of Sage 100.

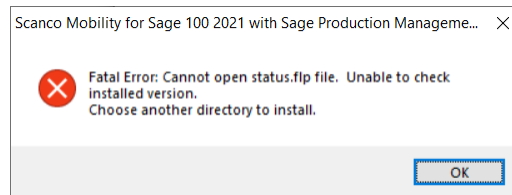
The Choose Folder window displays after the Browse button is selected.



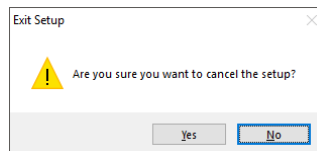
Specify the location of Sage 100 in the Path field. Select the OK button to return to the Select Features window.

9. Select the Next button from the Select Features window. The installed version of Sage 100 Standard, Sage 100 Advanced or Sage 100 Premium. Sage Production Management and Scanco Multi-Bin for Sage Production Management are validated.

When Sage 100 2021 has not been installed at the specified Sage 100 Standard, Sage 100 Advanced or Sage 100 Premium location, the following message displays.

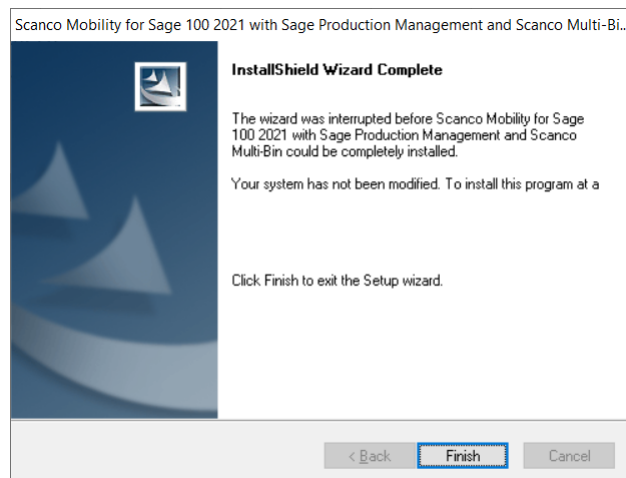


Select the OK button from the message. Select the Cancel button from the Select Features window. The following message displays.



Select Yes in the message.

Select the Finish button from the InstallShield Wizard Complete window to cancel the Mobility for Scanco Multi-Bin for Sage Production Management installation process.



Install Sage 100 2021, Sage Production Management 7.00.0.0.0, and Scanco Multi-Bin 7.0001 for Sage Production Management 7.00.0.0.0 or Sage 100 2021 with Product Update 1, Sage Production

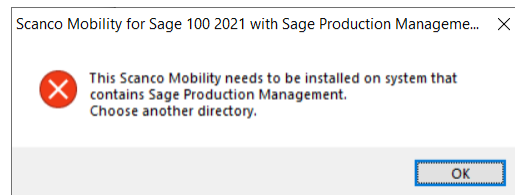
Management 7.00.0.1.0, and Scanco Multi-Bin 7.0011 for Sage Production Management 7.00.1.0.0 and then install Mobility for Scanco Multi-Bin for Sage Production Management.

Warning: When Sage Production Management 7.00.0.0.0 or 7.00.1.0.0 and/or Scanco Multi-Bin 7.0001 or 7.0011 is not installed in the selected location, the following message displays.



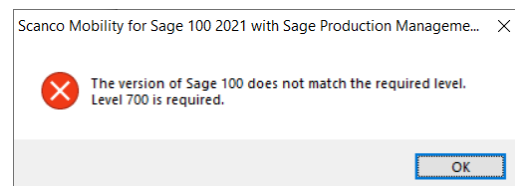
Select the OK button and modify the location to where Sage Production Management and Scanco Multi-Bin for Sage Production Management are installed or cancel the Mobility for Scanco Multi-Bin for Sage Production Management installation process and install Sage Production Management and Scanco Multi-Bin for Sage Production Management Enhancements.

Warning: When Sage Operations Management is installed in the selected location, the following message displays.



Select the OK button and modify the destination folder to where Sage Production Management and Scanco Multi-Bin for Sage Production Management are installed. Sage Production Management, Scanco Multi-Bin for Sage Production Management and Mobility for Scanco Multi-Bin for Sage Production Management may not be installed in the same Sage 100 location containing Sage Operations Management .

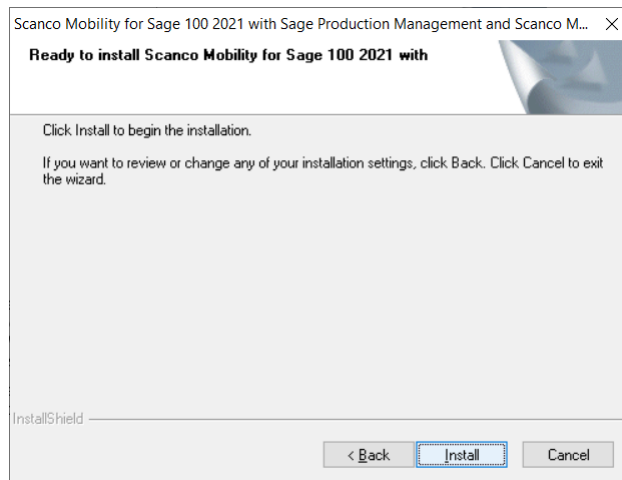
Warning: When Sage Production Management and/or Scanco Multi-Bin for Sage Production Management are installed but are not version 7.00.0.0.0 or 7.00.1.0.0, the following message displays.



Select OK and cancel the Mobility for Scanco Multi-Bin for Sage Production Management 7.00.0.0.0 installation process. Install Sage Production Management 7.00.0.0.0 or 7.00.1.0.0 and Scanco Multi-Bin 7.0001 or 7.0011 for Sage Production Management. Then install Mobility for Scanco Multi-Bin for Sage Production Management.

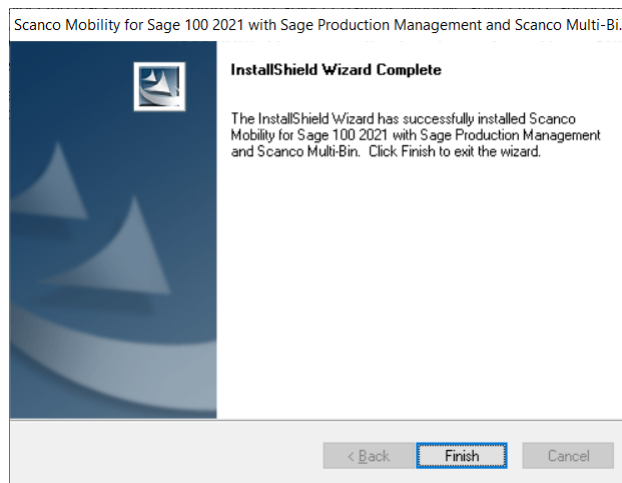
Warning: A unique Mobility installer is required for Scanco Multi-Bin for Sage Production Management.

10. Select the Install button from the following window to install Mobility for Scanco Multi-Bin for Sage Production Management.




Select the Back button to return to the Select Features window. Select the Cancel button, select Yes in the message *Are you sure you want to cancel the setup?* and the Finish button from the InstallShield Wizard Complete window to cancel the Mobility for Scanco Multi-Bin for Sage Production Management installation process.

11. Select the Finish button from the InstallShield Wizard Complete window to complete the Mobility for Scanco Multi-Bin for Sage Production Management installation process.




Activating Mobility for Bar Code

The Mobility for Bar Code module must be activated when Scanco Warehouse 100 is to be used with Sage 100 when Sage Production Management is installed.

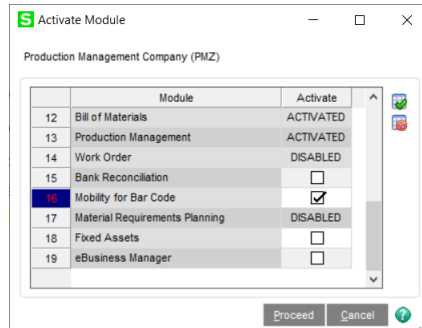
 **Note:** The Mobility 7.011 for Sage Production Management for Scanco Multi-Bin executable file does not install the Mobility for Bar Code module programs to use Scanco Warehouse 100. The Mobility for Bar Code with Scanco Multi-Bin executable file must be obtained and installed. Contact Scanco Support to obtain the Mobility for Bar Code with Scanco Multi-Bin executable file.

The Mobility for Bar Code module is not required to be activated when Scanco Manufacturing 100 or the Sage Shop Floor applications are used with Sage 100 when Sage Production Management is installed.

 **Note:** A registration file must include the activation for Scanco Mobility for Manufacturing to utilize Scanco Manufacturing 100 or the Sage Shop Floor applications.

How to Activate Mobility for Bar Code

1. Access Library Master Main menu > Company Maintenance.
2. Enter the appropriate company code in the Company Code field.
3. Select the Activate button.
4. Select the Mobility for Bar Code Activate check box.

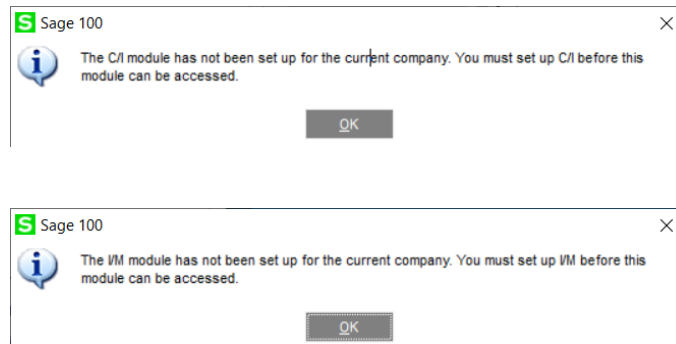


5. Select the Proceed button.

Creating Company Data Files for Required Sage 100 Modules

Company data files must be created prior to accessing Mobility for Scanco Multi-Bin for Sage Production Management tasks after Mobility for Scanco Multi-Bin for Sage Production Management is installed on an existing Sage 100 Standard, Sage 100 Advanced or Sage 100 Premium installation or after a new company has been created. Some Sage 100 modules are required to be installed to utilize Sage Production Management, Scanco Multi-Bin for Sage Production Management, and Sage Mobility for Scanco Multi-Bin for Sage Production Management. General Ledger, Common Information, and Inventory Management data files must be created prior to creating Sage Production Management company data files.

The following messages display when a Sage Production Management task is accessed before company data files are created for the Sage 100 Common Information or Inventory Management modules.

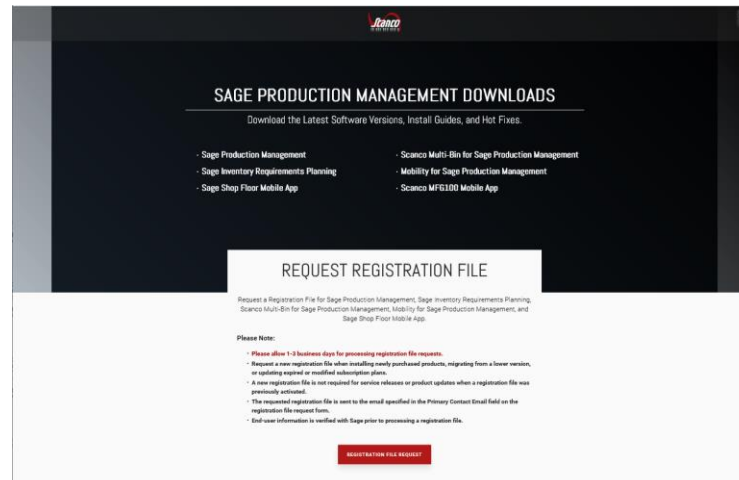


Click OK in the message. Access any Sage 100 Common Information or Inventory Management module task to access the Setup Wizard. Complete the Common Information or Inventory Management module setup process and then access Production Management Options to set up Sage Production Management.

Registering Mobility for Scanco Multi-Bin for Sage Production Management

How to Obtain Mobility for Scanco Multi-Bin for Sage Production Management Registration

1. Access the Production Management Downloads page <http://info.scanco.com/prod-mgmt-downloads>



2. Scroll down and click on Registration File Request.

3. Enter the required information in the Sage Production Management Registration form. Fields noted with an asterisk (*) are required.
4. Select the Sage Production Management, Scanco Multi-Bin, and Mobility for Manufacturing, Mobility for Manufacturing - Production Management check boxes. Select the check boxes for Sage Inventory Requirements Planning, Sage Shop Floor User/Devices, and/or other modules or add on options when the module or add on was purchased.

WHICH MODULES DO YOU WISH TO REGISTER?

- ☒ SCANCO MULTI-BIN
- ☒ SAGE PRODUCTION MANAGEMENT
- ☐ SAGE INVENTORY REQUIREMENTS PLANNING
- ☒ MOBILITY FOR MANUFACTURING

MB *

Please choose products needed for Scanco MultiBin. Please note not all products work with all Scanco products or all Sage versions. If there is a conflict we will contact you.


- ☐ MULTI-BIN STANDARD ☒ MULTI-BIN PREMIUM ☐ MULTI-BIN FOR OPERATIONS...
- ☐ MULTI-BIN FOR WORKORDER... ☐ ON THE WATER ☐ LICENSE PLATING
- ☐ WAVE BATCH ORDER SELECT... ☐ VENDOR LOT/EXPIRATION DA... ☐ IN-TRANSIT
- ☐ CATCH WEIGHT

MOBILITY FOR MANUFACTURING *


Please chose the module for which Mobility is needed. Note: Mobility for Barcode is licensed through Sage, not Scanco.

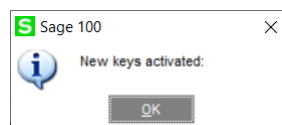
- ☐ MOBILITY FOR MANUFACTURING - OPERATIONS MANAGEMENT
- ☒ MOBILITY FOR MANUFACTURING - PRODUCTION MANAGEMENT

5. Select the Submit button.

 **Note:** Please allow 1-3 business days for processing Mobility for Scanco Multi-Bin for Sage Production Management registration requests. The Mobility for Scanco Multi-Bin for Sage Production Management registration file is sent to the email specified in the Primary Contact Email field on the Sage Production Management Registration form.

How to Register Mobility for Scanco Multi-Bin for Sage Production Management

1. When a license registration file is received via email, place the registration text file at ...\\MAS90_Scanco in the location where Sage 100 is installed.
 **Note:** Submit registration information before downloading from the Sage Production Management Downloads page and installing Mobility for Scanco Multi-Bin for Sage Production Management.
2. Access Library Master Setup menu > Scanco Product Registration.
3. Verify the correct Sage 100 Serial number and User Licenses displays.
4. Select the Activate button.
5. Select OK in the *New keys activated.* message.



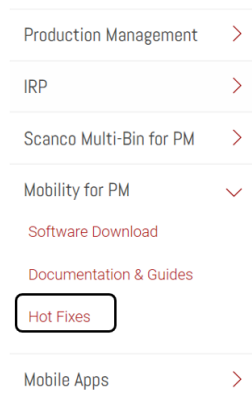
6. Verify Activated displays in the Status field for the Scanco Mobility for MFG product code record.
7. Select the Close button.

Mobility for Scanco Multi-Bin Production Management Hot Fixes

Occasionally hot fixes are required to be installed after installing Mobility for Scanco Multi-Bin for Sage Production Management. Access Mobility for Scanco Multi-Bin for Production Management hot fixes from the Sage Production Management Downloads page <http://info.scanco.com/prod-mgmt-downloads>

How to Install Mobility for Scanco Multi-Bin for Sage Production Management Hot Fixes

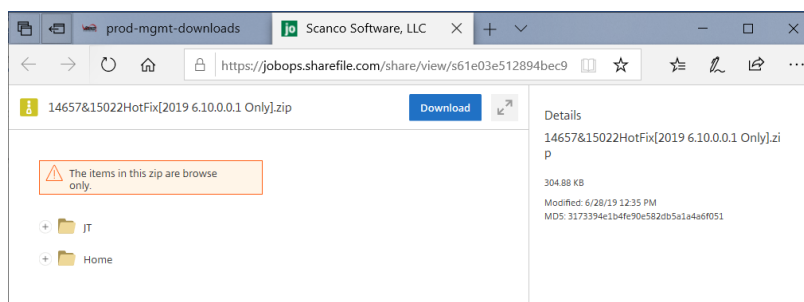
1. Access the Sage Production Management Downloads page <http://info.scanco.com/prod-mgmt-downloads>
2. Click on Mobility for PM menu.
3. Click on Hot Fixes.



4. Review the available hot fixes for Mobility for Scanco Multi-Bin for Sage Production Management for the currently installed version.

Warning: Hot fixes are version specific. Only install hot fixes for the current Mobility for Scanco Multi-Bin for Sage Production Management version.

5. Click on a hot fix link to be directed to the download file.



6. Click on the Download button.
7. Specify the location to download the hot fix.
8. Extract the hot fix file to the MAS90 directory where Sage 100 and Mobility for Scanco Multi-Bin for Sage Production Management are installed.

Warning: If the hot fix zip file is extracted to a location other than the MAS90 directory, the hot fix programs must be copied to the file location specified in the hot fix zip file.

9. Select to replace the files in the destination if the hot file was extracted to the MAS90 directory where Sage 100 and Mobility for Scanco Multi-Bin for Sage Production Management are installed. The hot fix program is now located in the correct directory in the Sage 100 and Mobility for Scanco Multi-Bin for Sage Production Management installation.
10. Review the document(s) included in the hot fix download file. Descriptions and instructions are included in this documentation.

