



sage Production
Management

Scanco Multi-Bin for Sage Production Management Installation Guide

Sage Production Management Enhancements Version 7.00.2.0.0

Scanco Multi-Bin Version 7.0021

Sage 100 Version 7.00.2.0

October 2021

© Copyright 2021 All rights reserved. Production Management is a trademark of Scanco Software, LLC. Sage, the Sage logos, and the Sage product and service names mentioned herein are registered trademarks or trademarks of Sage Software, Inc., or its affiliated entities. All other trademarks are the property of their respective owners. The contents herein are summary in nature and subject to change without notification from Scanco Software, LLC. Scanco Software, LLC, accepts no responsibility for inadvertent errors or omissions.

Scanco Software, LLC
1000 N Tamiami Trail
Suite 201
Nokomis, FL 34275

Contents

Introduction to Scanco Multi-Bin for Sage Production Management 4

About this Guide 4

Important Information 4

Required Sage 100 Modules 5

Scanco Multi-Bin for Sage Production Management Enhancements Pre-Installation Checklist 5

Scanco Multi-Bin 7.0021 for Sage Production Management 7.00.2.0.0 Installation Checklists 7

New Installation of Sage 100, Sage Production Management, and Scanco Multi-Bin 7

Upgrading Sage 100 with a New Installation of Production Management and Scanco Multi-Bin 8

Upgrading Sage 100 and Production Management with a New Installation of Scanco Multi-Bin 9

Upgrading Sage 100 and Scanco Multi-Bin with a New Installation of Sage Production Management 11

Upgrading Sage 100 and Production Management 2021.0 or 2021.1 to 2021.2 – 12

Installing Scanco Multi-Bin for Sage Production Management Enhancements 12

How to Install Scanco Multi-Bin for Sage Production Management Enhancements 13

Registering Scanco Multi-Bin for Sage Production Management 17

How to Obtain Sage Production Management and Scanco Multi-Bin Registration 18

How to Register Sage Production Management and Scanco Multi-Bin 19

Scanco Multi-Bin for Sage Production Management Hot Fixes 19

How to Install Scanco Multi-Bin for Sage Production Management Hot Fixes 20

Preparing Sage Production Management and Scanco Multi-Bin Data 21

How to Prepare Sage Production Management and Scanco Multi-Bin Data 21

Converting Work Order Data to Sage Production Management 22

Accessing Production Management without Installing Scanco Multi-Bin for Sage Production Management Enhancements 23

Scanco Manufacturing Efficiency, In Transit, Scheduled Bill of Materials and Advanced Landed Cost 23

How to Uninstall Scanco Enhancement Modules 24

About Production Management 24


Introduction to Scanco Multi-Bin for Sage Production Management

Sage Production Management gives discrete make to stock manufacturers and fabricators the tools they need to achieve visibility into their entire production process. By centralizing the production process in a way that is tightly integrated with Sage 100, assemblers, manufacturers, and fabricators always know their costs, the status of items, and the material quantities required to meet demand.

Scanco Multi-Bin with Sage Production Management provides the ability to track inventory movement in the manufacturing process by integrating Sage Production Management with Scanco Multi-Bin. Scanco Multi-Bin for Sage Production Management Enhancements contains modifications made to Scanco Multi-Bin for the Sage Production Management module. Sage Production Management and Scanco Multi-Bin must be installed prior to installing Scanco Multi-Bin for Sage Production Management Enhancements.

About this Guide


This guide provides the information necessary for installing Scanco Multi-Bin 7.0021 for Sage Production Management 7.00.2.0.0 Enhancements.


 **Note:** Within this document *Scanco Multi-Bin* refers to the Scanco Multi-Bin product without Sage Production Management installed in Sage 100. *Scanco Multi-Bin for Sage Production Management* refers to Sage Production Management Enhancements installed in Sage 100.


Important Information


Read this guide completely before installing Scanco Multi-Bin 7.0021 for Sage Production Management 7.00.2.0.0 Enhancements. The Scanco Multi-Bin 7.0021 for Sage Production Management 7.00.2.0.0 Enhancements installation includes Scanco Multi-Bin programs modified for the integration of Scanco Multi-Bin and Sage Production Management Before installing Scanco Multi-Bin 7.0021 for Sage Production Management 7.00.2.0.0 Enhancements, install and register Sage 100 Standard, Sage 100 Advanced or Sage 100 Premium 2021 with Product Update 2, Sage Production Management 7.00.2.0.0 and Scanco Multi-Bin 7.0021.


Refer to the Sage 100 Installation and System Administrator's Guide for information on installing Sage 100 Standard, Sage 100 Advanced or Sage 100 Premium and Product Update 2. Refer to the Sage Production Management 7.00.2.0.0 Installation Guide on installing Sage Production Management 7.00.2.0.0.


 **Note:** Work Order data containing Scanco Multi-Bin data may now be converted to Sage Production Management 7.00.2.0.0 with Scanco Multi-Bin 7.0021. Refer to Converting Work Order Data to Sage Production Management on page 22.


 **Warning:** An installer specific for Sage Production Management must be used to install Scanco Multi-Bin 7.0021 for Sage Production Management 7.00.2.0.0 Enhancements.


 **Warning:** When Scanco Multi-Bin exists in Sage 100 prior to installing Sage Production Management, Scanco Multi-Bin 7.0021 must be reinstalled before installing Scanco Multi-Bin 7.0021 for Sage Production Management 7.00.2.0.0 Enhancements. Refer to the Scanco Multi-Bin 7.0021 for Sage Production Management 7.00.2.0.0 Installation Guide.


 **Warning:** Scanco Multi-Bin 7.0021 for Sage Production Management 7.00.2.0.0 Enhancements must be installed when Scanco Multi-Bin 7.0021 is installed in Sage 100 with Sage Production Management. Refer to Accessing Production Management without Installing Scanco Multi-Bin for Sage Production Management Enhancements on page 23.

 **Warning:** Install Scanco Multi-Bin 7.0021 for Sage Production Management 7.00.2.0.0 Enhancements into a parallel test Sage 100 environment. Performing a test upgrade or a test new install allows issues to be resolved that may occur during the live upgrade or live new install, reducing downtime and an estimate to be established on how long the upgrade process will take. Refer to the [Sage Knowledgebase article ID 101266](#) for more information. As not noted in the Sage Knowledgebase article before step 20, third party products must be re-installed after a migration.

 **Warning:** Scanco Multi-Bin 7.0021 for Sage Production Management 7.00.2.0.0 Enhancements may not be compatible with non-Scanco third party products. If third-party products that integrate with Sage products are used, check with the vendor of the third-party product to ensure their product is fully compatible with this release. If other Sage products are integrated, check with a business partner or Sage to ensure that these components are compatible.

 **Warning:** Scanco Multi-Bin On The Water may not be registered when Sage Production Management 7.00.2.0.0 and Scanco Multi-Bin 7.0021 for Sage Production Management 7.00.2.0.0 Enhancements are installed. Refer to page 16.

 **Warning:** Scanco Manufacturing Efficiency, Scanco In Transit, Scanco Scheduled Bill of Materials, Scanco Property Management 2000, and Scanco Advanced Landed Cost must be uninstalled and new registration file that do not contain Scanco Manufacturing Efficiency, Scanco In Transit, Scanco Scheduled Bill of Materials, Scanco Property Management 2000, and Scanco Advanced Landed Cost must be obtained and activated before installing Sage Production Management 7.00.2.0.0 and Scanco Multi-Bin 7.0021 for Sage Production Management 7.00.2.0.0 Enhancements. Refer to page 23.

 **Note:** Please contact your authorized Sage Production Management partner or the Sage Support department at 866-996-7243 or <https://customers.sagenorthamerica.com> for assistance with Sage Production Management. Please contact Scanco Support at support@scanco.com for assistance with Scanco Multi-Bin for Sage Production Management.

Required Sage 100 Modules

The following Sage 100 modules are required to be installed and activated to utilizes Scanco Multi-Bin 7.0021 with Sage Production Management version 7.00.2.0.0.

- Library Master
- Common Information
- General Ledger
- Inventory Management
- Production Management

 **Warning:** Scanco Multi-Bin 7.0021 for Sage Production Management 7.00.2.0.0 Enhancements may not be installed into a Sage 100 install that contains Sage Operations Management.

Scanco Multi-Bin for Sage Production Management Enhancements Pre-Installation Checklist

Complete the following pre-installation checklist prior to installing Scanco Multi-Bin 7.0021 for Sage Production Management 7.00.2.0.0 Enhancements to ensure a successful installation.

- Do **not** install Scanco Multi-Bin 7.0021 for Sage Production Management 7.00.2.0.0 Enhancements when custom modifications exist on Sage or Scanco modified modules or products. Custom modifications must be retrofitted to the current Sage 100 version. Please contact your Sage Production Management partner or Scanco for information on how to obtain a quote for custom modifications to be retrofitted to Sage 100 2021 with Scanco Multi-Bin 7.0021 and Sage Production Management 7.00.2.0.0.
- Do **not** install Scanco Multi-Bin 7.0021 for Sage Production Management 7.00.2.0.0 Enhancements when extended solutions or third-party products are installed on the Sage 100 system. Please contact your Sage Production Management partner or Scanco Support at support@scanco.com for information on evaluating extended solutions or third-party software.
- Confirm that Scanco Manufacturing Efficiency, Scanco In Transit, Scanco Scheduled Bill of Materials, Scanco Property Management 2000, and/or Scanco Advanced Landed Cost are uninstalled and a new registration file not containing a registration number for these Scanco modules is activated in Sage 100. Refer to page 23 for information on how to uninstall and unregister Scanco Manufacturing Efficiency, Scanco In Transit, Scanco Scheduled Bill of Materials, Scanco Property Management 2000 and Scanco Advanced Landed Cost.

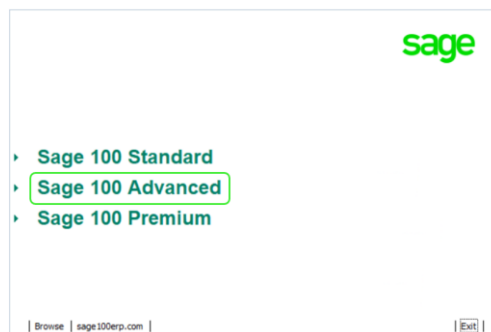
- ❑ Confirm that the Sage 100 installed version is 7.00.2.0 for the Sage 100 Standard, Sage 100 Advanced or Sage 100 Premium system. Access Help menu > About Sage to review the currently installed Sage 100 version. To review additional information on the currently installed Sage 100 system in the Sage 100 System Information window, select File menu > Run. Type *info in the Program field. Select the OK button.
- ❑ Confirm that Sage Production Management version 7.00.2.0.0 is installed. Access Production Management Setup menu > About Production Management to review the currently installed Sage Production Management version.
- ❑ Confirm that Scanco Multi-Bin 7.0021 is installed. Refer to the Scanco Multi-Bin Installation Guide for more information.
- ❑ Backup the entire Sage 100 Standard, Sage 100 Advanced or Sage 100 Premium system, including programs and data files, after all data entry files are updated, and before installing Scanco Multi-Bin 7.0021 for Sage Production Management 7.00.2.0.0 Enhancements.
- ❑ Download the Scanco Multi-Bin 7.0021 for Sage Production Management 7.00.2.0.0 Enhancements installation file and specify registration information from <http://info.scanco.com/prod-mgmt-downloads>. The Sage Production Management downloads page can be accessed from the Sage 100 2021 installation wizard.

⚠ Warning: A new registration file must be requested and activated

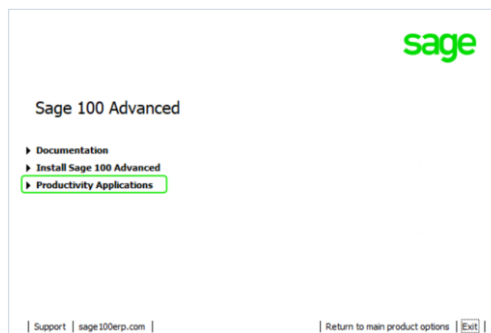
1. For a new installation of Scanco Multi-Bin for Sage Production Management,
2. When additional modules or Scanco products are purchased and installed,
3. When the Sage Production Management user count changes,
4. When migrating from a lower year version, for example 2019 version 6.10.5.0 to 2021 version 7.00.2.0, or
5. When the subscription plan has expired or modified.

A new registration file is not required for service releases or product updates when a registration file was previously activated.

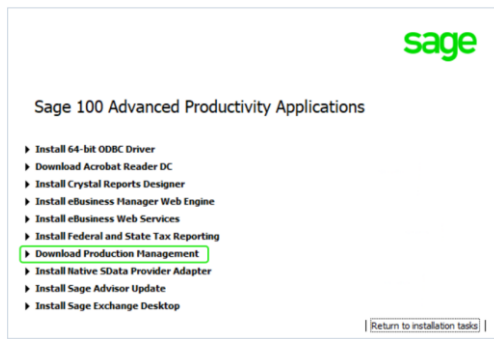
1. From the Sage 100 2021 installation Autorun screen, click a version of Sage 100.



2. From the Installation Tasks menu, click Productivity Applications.



3. Click Download Production Management to access the Sage Production Management downloads page.



Scanco Multi-Bin 7.0021 for Sage Production Management 7.00.2.0.0 Installation Checklists

Determine the installation path. Review and precisely follow one of the following installation checklists.

- New Installation of Sage 100, Sage Production Management, and Scanco Multi-Bin Page 7
- Upgrading Sage 100 with a New Installation of Production Management and Scanco Multi-Bin Page 8
- Upgrading Sage 100 and Production Management with a New Installation of Scanco Multi-Bin Page 9
- Upgrading Sage 100 and Scanco Multi-Bin with a New Installation of Sage Production Management Page 11
- Upgrading Sage 100 and Production Management 2021.0 or 2021.1 to 2021.2 Page 12

New Installation of Sage 100, Sage Production Management, and Scanco Multi-Bin

- ❑ Complete the Sage Production Management 7.00.2.0.0 pre-installation checklist. Refer to the Sage Production Management 7.00.2.0.0 Installation Guide.
- ❑ Complete the Scanco Multi-Bin 7.0021 pre-installation checklist. Refer to the Scanco Multi-Bin 7.0021 Installation Guide.
- ❑ Complete the Scanco Multi-Bin 7.0021 for Sage Production Management 7.00.2.0.0 Enhancements pre-installation checklist.
- ❑ Install Sage 100 2021. Refer to the Sage 100 2021 Installation and System Administrator's Guide.
- ❑ Install Product Update 2 for Sage 100 2021. Refer to the Sage 100 2021 Customer Upgrade Guide, the Sage 100 2021 Upgrade Checklist, and Sage Support for information on installing Sage Product Updates.
- ❑ Run the Sage 100 workstation setup process on all applicable workstations. Refer to the Sage 100 2021 Installation and System Administrator's Guide.
- ❑ Install Sage Production Management 7.00.2.0.0. Refer to the Sage Production Management 7.00.2.0.0 Installation Guide.
- ❑ If hot fixes are available on the Sage Production Management Downloads page for Sage Production Management version 7.00.2.0.0, install Sage Production Management 7.00.2.0.0 hot fixes. Refer to the Sage Production Management 7.00.2.0.0 Installation Guide.
- ❑ Install Scanco Multi-Bin 7.0021 by following the Scanco Multi-Bin installation checklists. Refer to the Scanco Multi-Bin 7.0021 Installation Guide.
- ❑ If hot fixes are available on the Scanco Multi-Bin Downloads page for Scanco Multi-Bin 7.0021, install Scanco Multi-Bin 7.0021 hot fixes. Refer to the Scanco Multi-Bin 7.0021 Installation Guide.
- ❑ Install Scanco Multi-Bin 7.0021 for Sage Production Management 7.00.2.0.0 Enhancements.

- ❑ If hot fixes are available on the Sage Production Management Downloads page for Scanco Multi-Bin 7.0021 for Sage Production Management 7.00.2.0.0, install the hot fixes. Refer to the How to Install Scanco Multi-Bin for Sage Production Management Hot Fixes section on page 20.
- ❑ Define role security for Sage Production Management and Scanco Multi-Bin from Library Master Main menu > Role Maintenance.
- ❑ Register Sage Production Management 7.00.2.0.0 and Scanco Multi-Bin 7.0021 from Library Master Setup menu > Scanco Product Registration. Refer to the Registering Scanco Multi-Bin for Sage Production Management section on page 17.
- ❑ Activate the required and optional Sage 100 modules from Library Master Main menu > Company Information. Refer to the Activating Sage Production Management section in the Sage Production Management Installation Guide.
- ❑ Prepare Scanco Multi-Bin 7.0021 and Sage Production Management 7.00.2.0.0 data for all companies including companies that do not have Scanco Multi-Bin or Sage Production Management activated. Refer to Preparing Sage Production Management and Scanco Multi-Bin Data on page 21.
- ❑ Create and set up company data files for required and optional Sage 100 modules that integrate with Scanco Multi-Bin 7.0021 for Sage Production Management 7.00.2.0.0. Refer to the Creating Company Data Files for Sage Modules section in the Sage Production Management Installation Guide.
- ❑ Verify the Sage 100, Sage Production Management and Scanco Multi-Bin versions by accessing Production Management Setup menu > About Production Management. Refer to the About Production Management section on page 23.
- ❑ Set up Scanco Multi-Bin. Refer to the Scanco Multi-Bin Training Guide for information on Scanco Multi-Bin setups.
- ❑ Access Production Management Setup menu > Production Management Options to set up the Production Management module. Refer to the Sage Production Management Installation Guide, Training Guide and Online Help for information on Sage Production Management setups.

Upgrading Sage 100 with a New Installation of Production Management and Scanco Multi-Bin

- ❑ Complete the Sage Production Management 7.00.2.0.0 pre-installation checklist.
- ❑ Complete the Scanco Multi-Bin 7.0021 pre-installation checklist. Refer to the Scanco Multi-Bin 7.0021 Installation Guide.
- ❑ Complete the Scanco Multi-Bin 7.0021 for Sage Production Management 7.00.2.0.0 Enhancements pre-installation checklist.
- ❑ Make a complete backup of the...\MAS90\ folder.
- ❑ Conduct a parallel installation of Sage 100 2021 when upgrading from version 2019 or lower. Refer to the Sage 100 2021 Customer Upgrade Guide and the Sage 100 2021 Upgrade Checklist.
- ❑ Install Sage 100 2021 Product Update 2. Refer to the Sage 100 2021 Customer Upgrade Guide, the Sage 100 2021 Upgrade Checklist, and Sage Support for information on installing Sage Product Updates.
- ❑ Run the Sage 100 workstation setup process on all applicable workstations. Refer to the Sage 100 2021 Installation and System Administrator's Guide.
- ❑ Migrate and convert Sage 100 data to 2021 version 7.00.2.0. Refer to the Sage 100 2021 Installation and System Administrator's Guide.
- ❑ Install Sage Production Management 7.00.2.0.0. Refer to the Sage Production Management Installation Guide.
- ❑ If hot fixes are available on the Sage Production Management Downloads page for Sage Production Management version 7.00.2.0.0, install Sage Production Management 7.00.2.0.0 hot fixes. Refer to the Sage Production Management 7.00.2.0.0 Installation Guide.

- ❑ Install Scanco Multi-Bin 7.0021 by following the Scanco Multi-Bin installation checklists. Refer to the Scanco Multi-Bin 7.0021 Installation Guide.
- ❑ Install Scanco Multi-Bin 7.0021 for Sage Production Management 7.00.2.0.0 Enhancements.
- ❑ If hot fixes are available on the Scanco Multi-Bin Downloads page for Scanco Multi-Bin 7.0021, install Scanco Multi-Bin 7.0021 hot fixes. Refer to the Scanco Multi-Bin 7.0021 Installation Guide.
- ❑ If hot fixes are available on the Sage Production Management Downloads page for Scanco Multi-Bin 7.0021 for Sage Production Management 7.00.2.0.0, install the hot fixes. Refer to the How to Install Scanco Multi-Bin for Sage Production Management Hot Fixes section on page 20.
- ❑ Define role security for Sage Production Management and Scanco Multi-Bin from Library Master Main menu > Role Maintenance.
- ❑ Register Sage Production Management 7.00.2.0.0 and Scanco Multi-Bin 7.0021 from Library Master Setup menu > Scanco Product Registration. Refer to the Registering Scanco Multi-Bin for Sage Production Management section on page 17.
- ❑ Back up all company data files before conducting the company conversion process.
- ❑ Run the data conversion process from Library Master Main menu > Company Information for existing companies.
- ❑ Activate the required and optional Sage 100 modules, if not already activated, and the Sage Production Management module from Library Master Main menu > Company Information. Refer to the Activating Sage Production Management section in the Sage Production Management Installation Guide.
- ❑ Prepare Scanco Multi-Bin 7.0021 and Sage Production Management 7.00.2.0.0 data for all companies including companies that do not have Scanco Multi-Bin or Sage Production Management activated. Refer to Preparing Sage Production Management and Scanco Multi-Bin Data on page 21.
- ❑ Verify the Sage 100, Sage Production Management and Scanco Multi-Bin versions by accessing Production Management Setup menu > About Production Management. Refer to the About Production Management section on page 23.
- ❑ Access the Custom Office Utilities Menu and run the update customized panels by selecting Custom Office Utilities menu > Update Customized Panels to Current Level. Review the placement of all user-defined fields. Refer to the Sage 100 2021 Customer Upgrade Guide and the Sage 100 2021 Upgrade Checklist.
- ❑ Reset all grids.
- ❑ Review and confirm all migrated data.
- ❑ Set up Scanco Multi-Bin. Refer to the Scanco Multi-Bin Training Guide for information on Scanco Multi-Bin setups.
- ❑ Access Production Management Setup menu > Production Management Options to set up the Production Management module. Refer to the Sage Production Management Installation Guide, Training Guide and Online Help for information on Sage Production Management setups.

Upgrading Sage 100 and Production Management with a New Installation of Scanco Multi-Bin

- ❑ Complete the Sage Production Management 7.00.2.0.0 pre-installation checklist.
- ❑ Complete the Scanco Multi-Bin pre-installation checklist. Refer to the Scanco Multi-Bin 7.0021 Installation Guide.
- ❑ Complete the Scanco Multi-Bin 7.0021 for Sage Production Management Enhancements 7.00.2.0.0 pre-installation checklist.
- ❑ Make a complete backup of the...\MAS90\ folder.
- ❑ Conduct a parallel installation of Sage 100 2021 when upgrading from version 2020 or older. Refer to the Sage 100 2021 Customer Upgrade Guide and the Sage 100 2021 Upgrade Checklist.

- ❑ Install Sage 100 2021 Product Update 2. Refer to the Sage 100 2021 Customer Upgrade Guide, the Sage 100 2021 Upgrade Checklist, and Sage Support for information on installing Sage Product Updates.
- ❑ Run the Sage 100 workstation setup process on all applicable workstations. Refer to the Sage 100 2021 Installation and System Administrator's Guide.
- ❑ Install Sage Production Management 7.00.2.0.0. Refer to the Sage Production Management Installation Guide.
- ❑ Migrate data following the Sage 100 parallel migration process. Refer to the Sage 100 2021 Customer Upgrade Guide and the Sage 100 2021 Upgrade Checklist.
- ❑ Reinstall Sage Production Management 7.00.2.0.0. Refer to the Sage Production Management Installation Guide.
- ❑ If hot fixes are available on the Sage Production Management Downloads page for Sage Production Management version 7.00.2.0.0, install Sage Production Management 7.00.2.0.0 hot fixes. Refer to the Sage Production Management Installation Guide.
- ❑ Make a complete backup of the...\MAS90\ folder.
- ❑ Install Scanco Multi-Bin 7.0021. Refer to the Scanco Multi-Bin Installation Guide.
- ❑ If hot fixes are available on the Scanco Multi-Bin Downloads page for Scanco Multi-Bin 7.0021, install Scanco Multi-Bin 7.0021 hot fixes. Refer to the Scanco Multi-Bin 7.0021 Installation Guide.
- ❑ Make a complete backup of the...\MAS90\ folder.
- ❑ Install the Scanco Multi-Bin 7.0021 for Sage Production Management 7.00.2.0.0 Enhancements. Refer to page 12.
- ❑ If hot fixes are available on the Sage Production Management Downloads page for Scanco Multi-Bin 7.0021 for Sage Production Management 7.00.2.0.0, install Scanco Multi-Bin 7.0021 for Sage Production Management 7.00.2.0.0 hot fixes. Refer to Scanco Multi-Bin for Sage Production Management Hot Fixes on page 19.
- ❑ Define role security for Scanco Multi-Bin and Sage Production Management from Library Master Main menu > Role Maintenance.
- ❑ Register Sage Production Management 7.00.2.0.0 and Scanco Multi-Bin 7.0021 from Library Master Setup menu > Scanco Product Registration. Refer to the Registering Scanco Multi-Bin for Sage Production Management section on page 17.
- ❑ Back up all company data files before conducting the company conversion process.
- ❑ Run the data conversion process from Library Master menu > Company Information.
- ❑ Prepare Scanco Multi-Bin 7.0021 and Sage Production Management 7.00.2.0.0 data for all companies including companies that do not have Scanco Multi-Bin or Sage Production Management activated. Refer to Preparing Sage Production Management and Scanco Multi-Bin Data on page 21.
- ❑ Access the Custom Office Utilities Menu and run the update customized panels by selecting Custom Office Utilities menu > Update Customized Panels to Current Level. Review the placement of all user-defined fields. Refer to the Sage 100 2021 Customer Upgrade Guide and the Sage 100 2021 Upgrade Checklist.
- ❑ Reset all grids.
- ❑ Verify the Sage 100 and Sage Production Management versions by accessing Production Management Setup menu > About Production Management. The Sage 100 version should display as 7.00.2.0 and the Sage Production Management version should display as 7.00.2.0.0. Refer to the About Production Management section on page 23.
- ❑ Review and confirm all migrated data in Sage 100, including Sage Production Management.
- ❑ Access Inventory Management Setup menu > Scanco Multi-Bin Warehouse Mgmt Options to set up Scanco Multi-Bin 7.0021 options. Refer to the Scanco Multi-Bin Training Guide for information on Scanco Multi-Bin setups.

Upgrading Sage 100 and Scanco Multi-Bin with a New Installation of Sage Production Management

- ❑ Complete the Sage Production Management 7.00.2.0.0 pre-installation checklist.
- ❑ Complete the Scanco Multi-Bin 7.0021 pre-installation checklist. Refer to the Scanco Multi-Bin 7.0021 Installation Guide.
- ❑ Complete the Scanco Multi-Bin 7.0021 for Sage Production Management 7.00.2.0.0 Enhancements pre-installation checklist.
- ❑ Make a complete backup of the...\MAS90\ folder.
- ❑ Conduct a parallel installation of Sage 100 2021 when upgrading from a version lower than Sage 100 2021. Refer to the Sage 100 2021 Customer Upgrade Guide and the Sage 100 2021 Upgrade Checklist.
- ❑ Install Sage 100 2021 Product Update 2. Refer to the Sage 100 2021 Customer Upgrade Guide, the Sage 100 2021 Upgrade Checklist, and Sage Support for information on installing Sage Product Updates.
- ❑ Run the Sage 100 workstation setup process on all applicable workstations. Refer to the Sage 100 2021 Installation and System Administrator's Guide.
- ❑ Install Scanco Multi-Bin 7.0021. Refer to the Scanco Multi-Bin 7.0021 Installation Guide.
- ❑ Migrate Sage 100 data to Sage 100 2021 through the Sage Data Migration Utility. Refer to the Sage 100 2021 Installation and System Administrator's Guide.
- ❑ Reinstall Scanco Multi-Bin 7.0021.
 - ⚠ **Warning:** When upgrading from versions 2013-2018, Scanco Multi-Bin old data files must be purged before installing Production Management. Refer to the Upgrading Scanco Multi-Bin to Version 2021 from Sage Version 2013-2018 section in the Scanco Multi-Bin Installation Guide for more information.
- ❑ If hot fixes are available on the Scanco Multi-Bin Downloads page for Version 2021.2, download and install the hot fixes.
- ❑ Make a complete backup of the...\MAS90\ folder.
- ❑ Install Sage Production Management 7.00.2.0.0. Refer to the Installing Sage Production Management section in the Sage Production Management Installation Guide.
- ❑ If hot fixes are available on the Sage Production Management Downloads page for Sage Production Management version 7.00.2.0.0, install Sage Production Management 7.00.2.0.0 hot fixes. Refer to the Sage Production Management 7.00.2.0.0 Installation Guide.
- ❑ Reinstall Scanco Multi-Bin 7.0021.
 - ⚠ **Warning:** Scanco Multi-Bin 7.0021 must be reinstalled after installing Sage Production Management 7.00.2.0.0. The order of installation when Scanco Multi-Bin 7.0021 and Sage Production Management are implemented is Sage Production Management, Scanco Multi-Bin and then Scanco Multi-Bin for Sage Production Management Enhancements.
- ❑ If hot fixes are available on the Scanco Multi-Bin Downloads page for version 7.0021, download and install the hot fixes.
- ❑ Install the Scanco Multi-Bin 7.0021 for Sage Production Management 7.00.2.0.0 Enhancements.
- ❑ If hot fixes are available on the Sage Production Management Downloads page for Scanco Multi-Bin 7.0021 for Sage Production Management 7.00.2.0.0, install Scanco Multi-Bin 7.0021 for Sage Production Management 7.00.2.0.0 hot fixes. Refer to Scanco Multi-Bin for Sage Production Management Hot Fixes section on page 19.
- ❑ Define role security for Sage Production Management and Scanco Multi-Bin from Library Master Main menu > Role Maintenance.
- ❑ Register Sage Production Management 7.00.2.0.0 and Scanco Multi-Bin 7.0021 from Library Master Setup menu > Scanco Product Registration. Refer to the Registering Scanco Multi-Bin for Sage Production Management section on page 17.

- ❑ Back up all company data files before proceeding to the company conversion process.
- ❑ Run the data conversion process from Library Master Main menu > Company Information for existing companies.
- ❑ Activate the Sage Production Management module and additional required or options Sage 100 modules from Library Master Main menu > Company Information.
- ❑ Prepare Scanco Multi-Bin 7.0021 and Sage Production Management 7.00.2.0.0 data for all companies including companies that do not have Scanco Multi-Bin or Sage Production Management activated. Refer to Preparing Sage Production Management and Scanco Multi-Bin Data on page 21.
- ❑ Access the Custom Office Utilities Menu and run the update customized panels by selecting Custom Office Utilities menu >Update Customized Panels to Current Level. Review the placement of all user-defined fields. Refer to the Sage 100 2021 Customer Upgrade Guide and the Sage 100 2021 Upgrade Checklist.
- ❑ Reset all grids.
- ❑ Review and confirm all migrated data in Sage 100, including Scanco Multi-Bin.
- ❑ Access Production Management Setup menu > Production Management Options to set up the Production Management module.

Upgrading Sage 100 and Production Management 2021.0 or 2021.1 to 2021.2

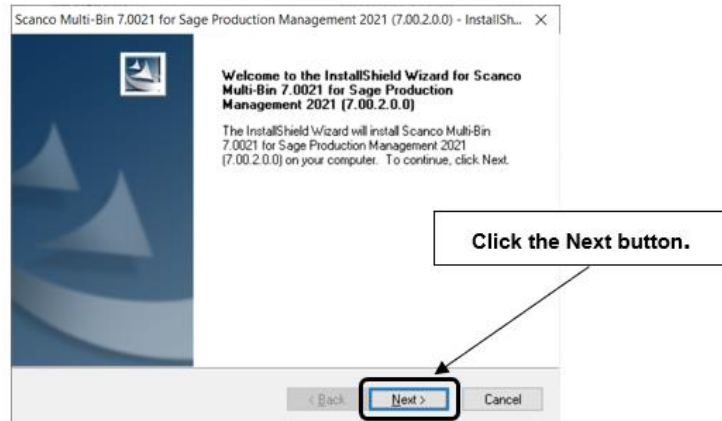
- ❑ Complete the Sage Production Management 7.00.2.0.0 pre-installation checklist.
- ❑ Complete the Scanco Multi-Bin 7.0021 pre-installation checklist. Refer to the Scanco Multi-Bin 7.0021 Installation Guide.
- ❑ Complete the Scanco Multi-Bin 7.0021 for Sage Production Management 7.00.2.0.0 Enhancements pre-installation checklist.
- ❑ Make a complete backup of the...\MAS90\ folder.
- ❑ Install Sage 100 2021 Product Update 2. Refer to the Sage 100 2021 Customer Upgrade Guide, the Sage 100 2021 Upgrade Checklist or Sage Support for more information on installing a Sage 100 Product Update.
- ❑ Install Scanco Multi-Bin 7.0021 for Sage Production Management 7.00.2.0.0 Enhancements.
- ❑ If hot fixes are available on the Sage Production Management Downloads page for Scanco Multi-Bin 7.0021 for Sage Production Management 7.00.2.0.0, install the hot fixes. Refer to the How to Install Scanco Multi-Bin for Sage Production Management Hot Fixes section on page 20.
- ❑ Run the data conversion process from Library Master Main menu > Company Information for existing companies.
- ❑ Prepare Scanco Multi-Bin 7.0021 and Sage Production Management 7.00.2.0.0 data for all companies including companies that do not have Scanco Multi-Bin or Sage Production Management activated. Refer to Preparing Sage Production Management and Scanco Multi-Bin Data on page 21.
- ❑ Access the Custom Office Utilities Menu and run the update customized panels by selecting Custom Office Utilities menu >Update Customized Panels to Current Level. Review the placement of all user-defined fields. Refer to the Sage 100 2021 Customer Upgrade Guide and the Sage 100 2021 Upgrade Checklist.
- ❑ Reset all grids.
- ❑ Review and confirm all data in Sage 100, including Scanco Multi-Bin and Sage Production Management..

Installing Scanco Multi-Bin for Sage Production Management Enhancements

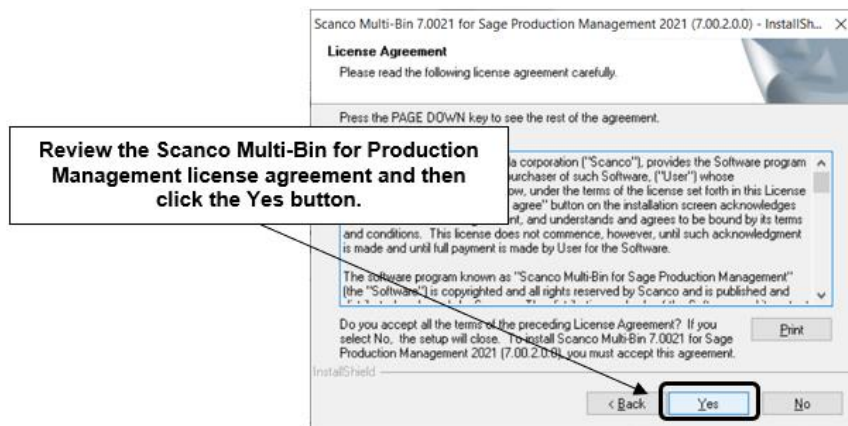
Conduct the following steps after Sage 100 2021, Production Update 1, Sage Production Management 7.00.2.0.0, and Scanco Multi-Bin 7.0021 are installed successfully.

How to Install Scanco Multi-Bin for Sage Production Management Enhancements

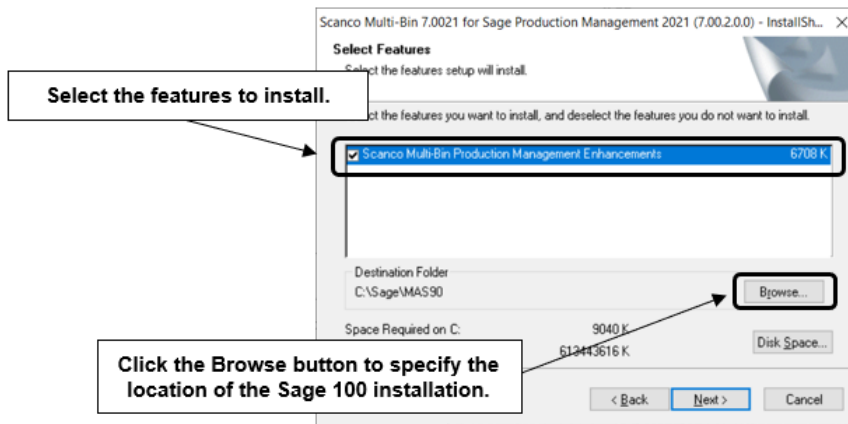
1. Download the MB70021_PM.exe file from the Sage Production Management Downloads page at <http://info.scanco.com/prod-mgmt-downloads>.
2. Right click on the Scanco Multi-Bin 7.0021 for Sage Production Management 7.00.2.0.0 Enhancements executable file.
3. Select Run as administrator.



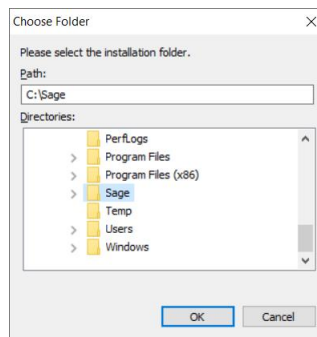
4. Select the Next button from the Scanco Multi-Bin for Production Management Enhancements Welcome window.
5. Review the Scanco Multi-Bin for Sage Production Management License Agreement.



6. Select the Yes button to agree to the Scanco Multi-Bin for Sage Production Management License Agreement and to continue with the Scanco Multi-Bin 7.0021 for Sage Production Management 7.00.2.0.0 Enhancements installation process.
7. Accept the defaulting check box field settings or select the Scanco Multi-Bin Production Management Enhancements check box fields to install Scanco Multi-Bin 7.0021 for Sage Production Management 7.00.2.0.0 Enhancements.

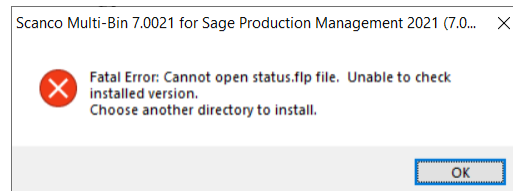


- Accept the default location of Sage 100 or select the Browse button to specify the location of Sage 100. The Choose Folder window displays after the Browse button is selected.

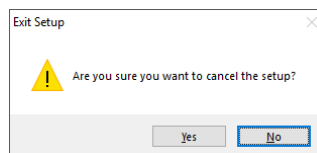


Specify the location of Sage 100 in the Path field. Select the OK button to return to the Select Features window.

- Select the Next button from the Select Features window. The installed version of Sage 100 Standard, Sage 100 Advanced or Sage 100 Premium and Sage Production Management are validated.

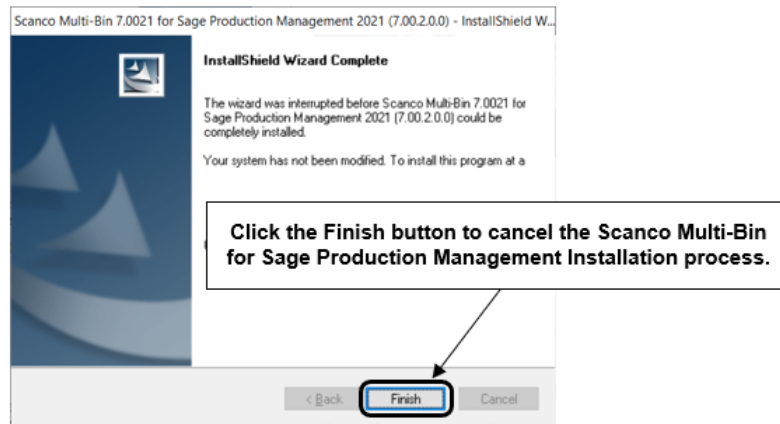


Select the OK button from the message. Select the Cancel button from the Select Features window. The following message displays.



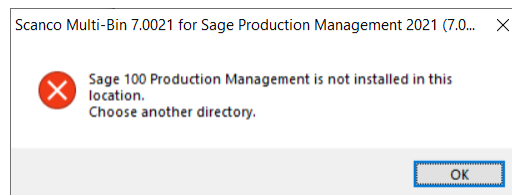
Select Yes in the message.

Select the Finish button from the InstallShield Wizard Complete window to cancel the Scanco Multi-Bin 7.0021 for Sage Production Management 7.00.2.0.0 Enhancements installation process.



Install Sage 100 2021, Sage Production Management 7.00.2.0.0, Scanco Multi-Bin 7.0021 and then install Scanco Multi-Bin 7.0021 for Sage Production Management 7.00.2.0.0 Enhancements.

Warning: When Sage Production Management 7.00.2.0.0 is not installed in the selected location, the following message displays.



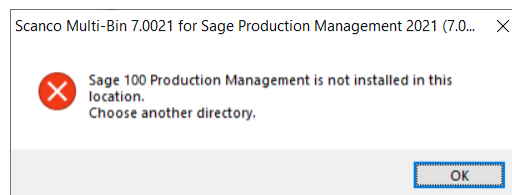
Select the OK button and modify the location to where Sage Production Management 7.00.2.0.0 is installed or cancel the Scanco Multi-Bin 7.0021 for Sage Production Management 7.00.2.0.0 Enhancements installation process and install Sage Production Management 7.00.2.0 and Scanco Multi-Bin 7.0021.

Warning: When the Sage 100 2021 Product Update 2 has not been installed at the specified Sage 100 Standard, Sage 100 Advanced or Sage 100 Premium location, the following message displays



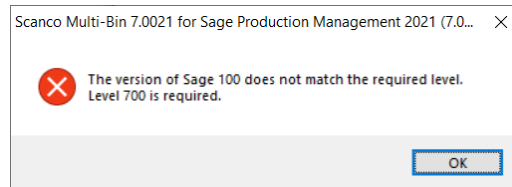
Select the OK button and then Cancel the Scanco Multi-Bin 7.0021 for Sage Production Management 7.00.2.0.0 Enhancements installation process. Install Product Update 2, Sage Production Management 7.00.2.0.0, Scanco Multi-Bin 7.001 and then install Scanco Multi-Bin 7.0021 for Sage Production Management 7.00.2.0.0.

Warning: When Operations Management is installed in the selected location, the following message displays.



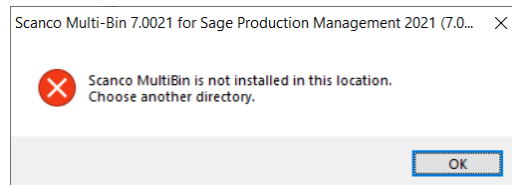
Select the OK button and modify the destination folder to where Sage Production Management 7.00.2.0.0 is installed. Sage Production Management and Scanco Multi-Bin for Sage Production Management Enhancements may not be installed in the same Sage 100 location containing Sage Operations Management.

Warning: When Sage Production Management is installed but is not version 7.00.2.0.0, the following message displays.



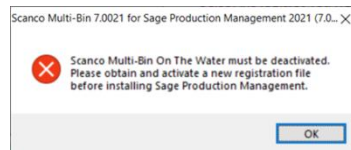
Select OK and cancel the Scanco Multi-Bin 7.0021 for Sage Production Management 7.00.2.0.0 Enhancements installation process. Install Sage Production Management 7.00.2.0.0, Scanco Multi-Bin 7.0021, and then install Scanco Multi-Bin 7.0021 for Sage Production Management 7.00.2.0.0 Enhancements.

Warning: When Scanco Multi-Bin 7.0021 is not installed, the following message displays.



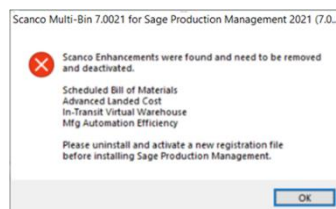
Select OK and cancel the Scanco Multi-Bin 7.0021 for Sage Production Management 7.00.2.0.0 Enhancements installation process. Install Scanco Multi-Bin 7.0021 and then install Scanco Multi-Bin 7.0021 for Sage Production Management 7.00.2.0.0 Enhancements.

Warning: Scanco Multi-Bin On The Water may not be registered when Sage Production Management or Scanco Multi-Bin 7.0021 for Sage Production Management 7.00.2.0.0 is installed. The following message displays when the selected location contains Scanco Multi-Bin with Scanco Multi-Bin On The Water activated.



Select OK and cancel the Scanco Multi-Bin 7.0021 for Sage Production Management 7.00.2.0.0 installation process. A new Scanco Multi-Bin registration file that does not contain Scanco Multi-Bin On The Water must be obtained and activated to install Sage Production Management 7.00.2.0.0 and Scanco Multi-Bin 7.0021 for Sage Production Management 7.00.2.0.0.

Warning: Scanco Manufacturing Efficiency, Scanco In Transit, Scanco Scheduled Bill of Materials, Scanco Property Management 2000, and Scanco Advanced Landed Cost do not integrate and are not compatible with Sage Production Management and Scanco Multi-Bin for Sage Production Management. The following message displays when Scanco Manufacturing Efficiency, Scanco In Transit, Scanco Scheduled Bill of Materials, Scanco Property Management 2000, and/or Scanco Advanced Landed Cost are installed and/or activated in Sage 100.



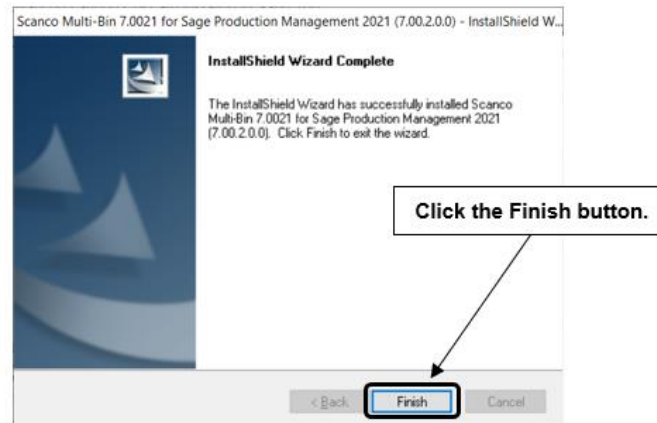
Select OK and cancel the Scanco Multi-Bin 7.0021 for Sage Production Management 7.00.2.0.0 Enhancements installation process. Refer to page 23 for information on the steps to take when Scanco Manufacturing Efficiency, Scanco In Transit, Scanco Scheduled Bill of Materials and/or Scanco Advanced Landed Cost are installed in Sage 100.

10. Select the Install button from the following window to install Scanco Multi-Bin 7.0021 for Sage Production Management 7.00.2.0.0 Enhancements.



Select the Back button to return to the Select Features window. Select the Cancel button, select Yes in the message *Are you sure you want to cancel the setup?* and the Finish button from the InstallShield Wizard Complete window to cancel the Scanco Multi-Bin 7.0021 for Sage Production Management 7.00.2.0.0 installation process.

11. Select the Finish button from the InstallShield Wizard Complete window to complete the Scanco Multi-Bin 7.0021 for Sage Production Management 7.00.2.0.0 installation process.



Registering Scanco Multi-Bin for Sage Production Management

A new registration file must be requested and activated

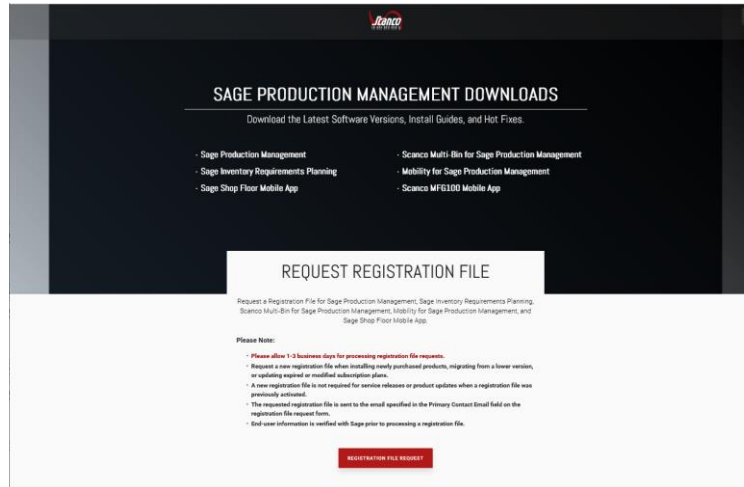
1. For a new installation of Scanco Multi-Bin for Sage Production Management,
2. When additional Scanco products are purchased and implemented,
3. When the Sage Production Management user count changes,
4. When migrating from a lower version, for example 2019 version 6.10.5.0 to 2021 version 7.00.2.0, or
5. When the subscription plan has expired or modified.

A new registration file is not required for service releases or product updates when a registration file was previously activated, for example 2021.1 version 7.00.2.0 to 2021.2 version 7.00.2.0.

Sage Production Management and Scanco Multi-Bin must be registered from Library Master Setup menu > Scanco Production Registration after installing Sage Production Management 7.00.2.0.0, Scanco Multi-Bin 7.0021, and Scanco Multi-Bin 7.0021 for Sage Production Management 7.00.2.0.0 Enhancements.

How to Obtain Sage Production Management and Scanco Multi-Bin Registration


1. Access the Scanco Production Management Downloads page <http://info.scanco.com/prod-mgmt-downloads>



2. Scroll down and click on Registration File Request.


3. Enter the required information in the Sage Production Management Registration form. Fields noted with an asterisk (*) are required.
4. Select the check boxes for Scanco Multi-Bin, Sage Production Management and additional Scanco Multi-Bin add on products. Select the check boxes for Sage Inventory Requirements Planning, Mobility for Manufacturing, Sage Shop Floor User/Devices, and/or Dynamic Off when these products have been purchased.

5. Select the Submit button.

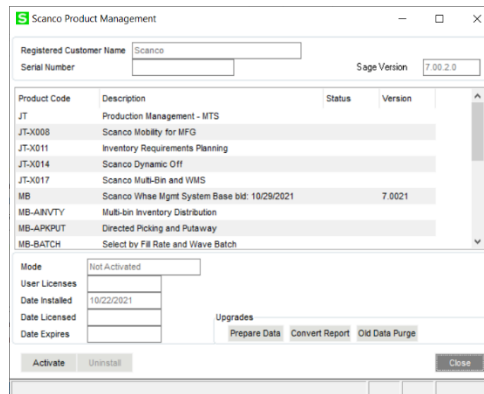
 **Note:** Please allow 1-3 business days for processing Scanco Multi-Bin for Production Management registration requests. The Scanco Multi-Bin for Production Management registration file is sent to the email specified in the Primary Contact Email field on the Production Management Registration form.

How to Register Sage Production Management and Scanco Multi-Bin

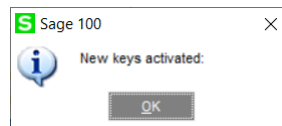
1. When a license registration file is received via email, place the registration text file at ...\\MAS90_Scanco in the location where Sage 100 is installed.

 **Note:** Submit registration information before downloading from the Sage Production Management Downloads page and installing Scanco Production Management, Scanco Multi-Bin, and Scanco Multi-Bin for Sage Production Management Enhancements.

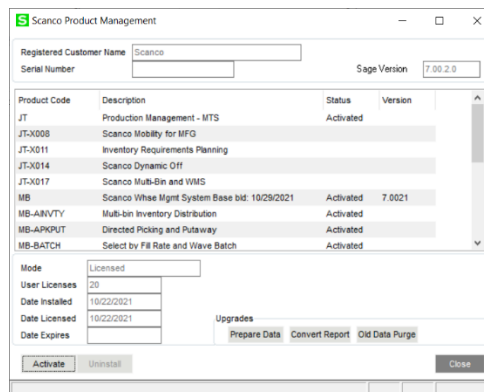
2. Access Library Master Setup menu > Scanco Product Registration.



3. Verify the correct Sage 100 Serial number and User Licenses displays.
4. Select the Activate button.
5. Select OK in the following message.



6. Verify Activated displays for the purchased Scanco Multi-Bin product codes.



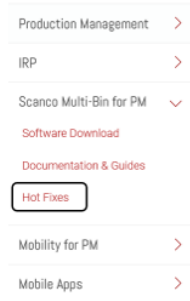
7. Select the Close button.

Scanco Multi-Bin for Sage Production Management Hot Fixes


Occasionally hot fixes are required to be installed after installing Scanco Multi-Bin for Production Management Enhancements. Access Scanco Multi-Bin for Production Management hot fixes from the Production Management Downloads page <http://info.scanco.com/prod-mgmt-downloads>

How to Install Scanco Multi-Bin for Sage Production Management Hot Fixes

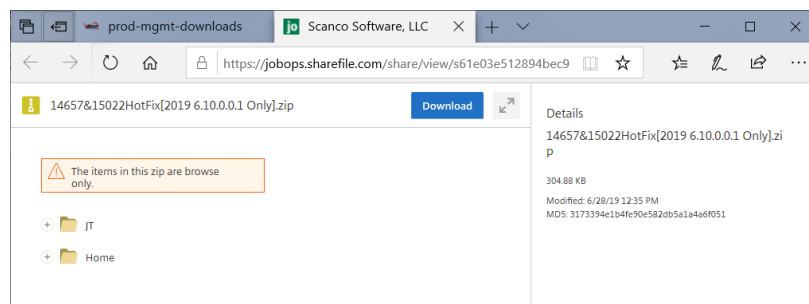
1. Access the Production Management Downloads page <http://info.scanco.com/prod-mgmt-downloads>
2. Click on the Scanco Multi-Bin for PM menu option.
3. Click on the Hot Fix menu option from the Scanco Multi-Bin for PM menu.




4. Review the available hot fixes for Scanco Multi-Bin for Sage Production Management for the currently installed version.

 **Note:** Hot fixes are version specific. Only install hot fixes for the current Scanco Multi-Bin for Sage Production Management version.

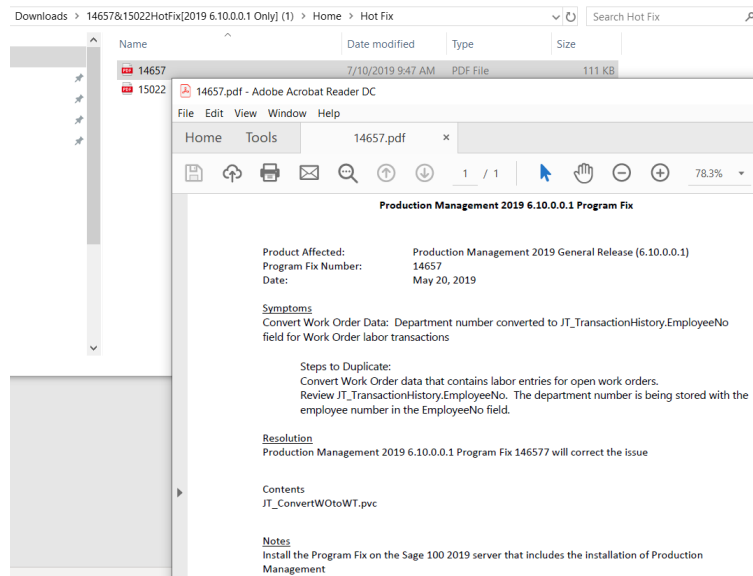
5. Click on a hot fix link to be directed to the download file.



6. Click on the Download button.
7. Specify the location to download the hot fix.
8. Extract the hot fix file to the MAS90 directory where Sage 100 and Scanco Multi-Bin for Sage Production Management are installed.

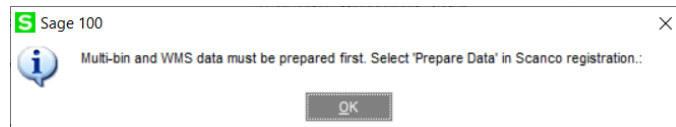
 **Warning:** If the hot fix zip file is extracted to a location other than the MAS90 directory, the hot fix programs must be copied to the file location specified in the hot fix zip file.

9. Select to replace the files in the destination if the hot file was extracted to the MAS90 directory where Sage 100 and Production Management are installed. The hot fix program is now located in the correct directory in the Sage 100 and Scanco Multi-Bin for Sage Production Management installation.
10. Review the document(s) included in the hot fix download file. Descriptions and instructions are included in this documentation.



Preparing Sage Production Management and Scanco Multi-Bin Data

Scanco Multi-Bin and Sage Production Management data must be prepared to set up and access Scanco Multi-Bin Warehouse Mgmt Options for a new company. The following message displays when data has not been prepared for the active company.



Select OK to return to the menu.

Data must also be prepared after migrating to a new Sage version, upgrading to a new Sage Product Update, or activating a new module.

How to Prepare Sage Production Management and Scanco Multi-Bin Data

1. Access Library Master Setup menu > Scanco Product Registration.

Warning: Only run the Scanco Multi-Bin prepare process when all users are logged out of the Sage 100 system.

2. Select the Prepare button.
3. Select a button from the following message.



Select One to prepare data for the active company. Select All to prepare data for all company codes that exist in Sage 100. Select No to cancel the Scanco Multi-Bin prepare data process.

4. Close the Scanco Product Registration window.
5. Access Inventory Management Setup menu > Scanco Multi-Bin Warehouse Mgmt Options to setup the Scanco Multi-Bin module options in a new company. Refer to the Scanco Multi-Bin Training Guide for more information.

Converting Work Order Data to Sage Production Management

Sage Work Order data can be converted into Production Management data by using the Sage Production Management Convert Work Order Data utility.

How to Convert Work Order with Scanco Multi-Bin Data to Sage Production Management with Scanco Multi-Bin

1. Complete all steps in one of the checklists on page 7.
2. If migrating to Sage 100 Premium, review and complete the necessary steps from the Migrating to Sage Production Management 7.00.2.0.0 section in the Sage Production Management Installation Guide.
3. Follow the steps defined in the Sage Production Management Setup Wizard section found in the Sage Production Management Installation Guide.
4. Review and assign values to all fields in Production Management Options.

Warning: Field values assigned in Production Management Options are retained during the Convert Work Order Data process and are not overwritten by values assigned in Work Order Options. Since Production Management Options present many different parameters, it is important to review and assign all fields prior to running the Convert Work Order Data process.

The screenshot shows the 'Production Management Options (PMZ) 7/10/2019' window. It has a menu bar with '1. Main', '2. Entry', '3. Forms', '4. Printing', '5. Quick Print', and '6. Labor'. The 'Batch Processing' section contains a table with columns 'Description', 'Enable', and 'Next Batch'. The 'Defaults' section includes fields for 'Default Warehouse for Parent Item', 'Use Item Default Warehouse for Parent Item', 'Default Warehouse for Materials', 'Use Item Default Warehouse for Materials', 'Include Open W/T Materials as Inventory Demand', 'Default Make to Stock Work Ticket Class' (highlighted with a green box and containing 'STK'), 'Default Work Ticket Class for Sales Order Entry', 'Explode Subassemblies', 'Default General Ledger Accounts', and 'Special Item Purchases'. The 'Auto Issue Labor' and 'Backflush Labor' checkboxes are checked. The 'Auto Issue Materials' and 'Backflush Materials' checkboxes are also checked. The 'Limit Materials Auto Issue to Quantity On Hand' checkbox is unchecked. The 'Auto Issue Materials Shortage Report' dropdown is set to 'Sort by Item Code'. The 'Cost Completion Method' dropdown is set to 'Actual'. The 'Make To Stock' checkbox is checked. The 'Auto Release Work Ticket' checkbox is unchecked. The 'Accept', 'Cancel', and 'Print' buttons are at the bottom right.

Note: A work ticket class must be assigned to the Default Make to Stock Work Ticket Class field in Production Management Options to run the Sage Production Management Convert Work Order Data utility.

5. From Work Ticket Class Maintenance, review information assigned to the default work ticket class created by the Sage Production Management Setup Wizard.

Note: The default work ticket class assigned as the Default Make to Stock Work Ticket Class field in Production Management Options must exist in Work Ticket Class Maintenance to run the Sage Production Management Convert Work Order Data utility.

Warning: Some parameter, such as General Ledger accounts and overhead settings assigned to a work ticket class in Work Ticket Class Maintenance cannot be changed after a work tickets is created from converted work orders.

6. Access Production Management Utilities menu > Convert Work Order Data.

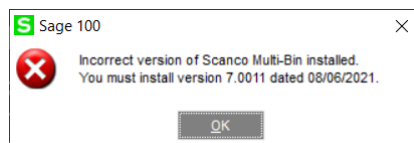
Warning: The Sage Production Management Convert Work Order Data utility does not convert Work Order history.

7. Review messages in the task window.

- The message *Warning: Production Management data is active.* displays when Sage Production Management data has been created prior to converting Work Order data to Sage Production Management data. This includes settings specified in Production Management Options and defined work ticket classes in Work Ticket Class Maintenance.
 - The message *Invalid or missing default Work Ticket Class.* displays when a work ticket class is not assigned to the Default Make to Stock Work Ticket Class field in Production Management Options. A work ticket class must be assigned to the Default Make to Stock Work Ticket Class field in Production Management Options to run the Sage Production Management Convert Work Order Data utility.
 - The message *Missing Work Ticket Class record required to convert Company.* displays when the default work ticket class assigned to the Default Make to Stock Work Ticket Class field in Production Management Options does not exist in Work Ticket Class Maintenance.
8. Select the Proceed button when the *Warning: Production Management data is active.* displays. Select the Cancel button to close the Convert Work Order Data utility window to specify or create a default make to stock work ticket class.
 9. Select OK to the message *Work Order to Production Management conversion completed.* after Work Order data is converted to Production Management data
 10. After the Convert Work Order Data utility completes, review and confirm converted Work Order data in Sage Production Management tasks.

Accessing Production Management without Installing Scanco Multi-Bin for Sage Production Management Enhancements

Scanco Multi-Bin for Sage Production Management Enhancements must be installed after Sage Production Management and Scanco Multi-Bin to utilize Scanco Multi-Bin features. When Scanco Multi-Bin for Sage Production Management Enhancements are not installed in Sage 100 containing Sage Production Management and Scanco Multi-Bin, the following message displays when a Sage Production Management menu task is selected.



Select the OK button to return to the menu. Exit out of Sage 100. Install Scanco Multi-Bin for Sage Production Management Enhancements.

Scanco Manufacturing Efficiency, In Transit, Scheduled Bill of Materials and Advanced Landed Cost

The following do not integrate and are not compatible with Sage Production Management 7.00.2.0.0 when Scanco Multi-Bin is and is not installed.

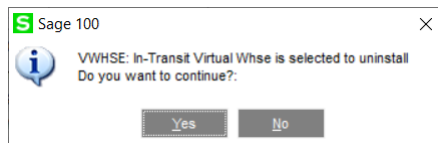
- Scanco Multi-Bin: On the Water
- Scanco Multi-Bin: Standard Costs for Lot Items
- Scanco Manufacturing Efficiency
- Scanco In Transit
- Scanco Scheduled Bill of Materials
- Scanco Advanced Landed Cost
- Scanco Property Management 2000

The following steps must be taken prior to installing Sage Production Management 7.00.2.0.0 and Scanco Multi-Bin 7.0021 for Sage Production Management 7.00.2.0.0 Enhancements.

1. Scanco Manufacturing Efficiency, Scanco In Transit, Scanco Scheduled Bill of Materials and Scanco Advanced Landed Cost must be uninstalled.
2. A new registration file that does not contain Scanco Manufacturing Efficiency, Scanco In Transit, Scanco Scheduled Bill of Materials, Scanco Property Management 2000, Scanco Multi-Bin On the Water, Scanco Multi-Bin Standard Costs for Lot Items, and/or Scanco Advanced Landed Cost must be obtained and activated in Sage 100.

How to Uninstall Scanco Enhancement Modules

1. Access Library Master > Setup > Scanco Product Registration
2. Click on the Scanco Enhancement product code record.
3. Select the Uninstall button.
4. Select Yes in the following message.



5. Continue the uninstall process until Scanco Manufacturing Efficiency, Scanco In Transit, Scanco Scheduled Bill of Materials and/or Scanco Advanced Landed Cost Scanco enhancement modules are uninstalled.
6. Copy the new registration file that does not contain Scanco Manufacturing Efficiency, Scanco In Transit, Scanco Scheduled Bill of Materials, Scanco Property Management 2000, Scanco Multi-Bin On the Water, Scanco Multi-Bin Standard Costs for Lot Items, and/or Scanco Advanced Landed Cost to ...\\MAS90_Scanco.
7. Select the Activate button from the Scanco Product Registration window.
8. Select the Close button.

About Production Management

Use the About Production Management window to review the current Sage 100, Sage Production Management and Scanco Multi-Bin version numbers. The information available in the About Production Management window is also used when contacting Sage and Scanco Support.

Access this window from Production Management Setup menu > About Production Management.



Select the OK button to close the About Production Management window.