



sage Production  
Management

# Scanco Production Management Plus

## Installation Guide

Sage Production Management Version 7.00.1.0.0 & 7.00.2.0.0

Sage 100 Version 7.00.1.0 & 7.00.2.0

December 2021

*© Copyright 2021 All rights reserved. Production Management is a trademark of Scanco Software, LLC. Sage, the Sage logos, and the Sage product and service names mentioned herein are registered trademarks or trademarks of Sage Software, Inc., or its affiliated entities. All other trademarks are the property of their respective owners. The contents herein are summary in nature and subject to change without notification from Scanco Software, LLC. Scanco Software, LLC, accepts no responsibility for inadvertent errors or omissions.*

Scanco Software, LLC  
1000 N Tamiami Trail  
Suite 201  
Nokomis, FL 34275

# **Contents**

## **Introduction to Scanco Production Management Plus 4**

About this Guide 4

Important Information 4

Compatible Versions 4

Scanco Multi-Bin Integration 4

Parallel Test Environment 4

Non-Scanco Third Party Products 4

Installation Order 4

Scanco Enhancements 5

Sage Operations Management 5

Supporting Documentation 5

Required Sage 100 Modules 5

## **Scanco Production Management Plus Pre-Installation Checklist 6**

## **Scanco Production Management Plus Installation Checklists 8**

New Installation of Sage 100 with Scanco Production Management Plus 8

Upgrading Sage 100 with a New Installation of Sage Production Management and Scanco Production Management Plus 8

Upgrading Sage 100 and Production Management to 2021.2 with a new installation of Scanco Production Management Plus 10

Upgrading Scanco Production Management Plus 2021.1 to 2021.2 – 11

## **Installing Scanco Production Management Plus 11**

How to Install Scanco Production Management Plus 11

## **Registering Scanco Production Management Plus 16**

How to Obtain Scanco Production Management Plus Registration 16

How to Register Scanco Production Management Plus 17

## **Scanco Production Management Plus Hot Fixes 18**

How to Install Scanco Production Management Plus Hot Fixes 18

## **Scanco Manufacturing Efficiency, In Transit, Scheduled Bill of Materials and Advanced Landed Cost 18**

## **About Production Management 19**

# Introduction to Scanco Production Management Plus

Sage Production Management gives discrete make to stock manufacturers and fabricators the tools they need to achieve visibility into their entire production process. By centralizing the production process in a way that is tightly integrated with Sage 100, assemblers, manufacturers, and fabricators always know their costs, the status of items, and the material quantities required to meet demand.

Scanco Production Management Plus includes the ability to create a work ticket directly from a sales order item. Refer to the Scanco Production Management Plus What's New Guide for more information on this enhancement.

## About this Guide

This guide provides the information necessary for installing Scanco Production Management Plus.

## Important Information

Read this guide completely before installing Scanco Production Management Plus. The Scanco Production Management Plus installation includes Sage Production Management modified programs. Before installing Scanco Production Management Plus, install and register Sage 100 Standard, Sage 100 Advanced or Sage 100 Premium and Sage Production Management.

Refer to the Sage 100 Installation and System Administrator's Guide for information on installing Sage 100 Standard, Sage 100 Advanced or Sage 100 Premium and Sage 100 2021 Product Update 1 or 2.

## Compatible Versions

Scanco Production Management Plus is compatible with Sage 100 2021 version 7.00 with Product Update 1 or 2.

## Scanco Multi-Bin Integration

Scanco Production Management Plus may be utilized with and without Scanco Multi-Bin. Scanco Production Management Plus does not integrate with any non-Scanco products.

Refer to the Scanco Multi-Bin for Production Management Installation guide for information on Scanco Multi-Bin for Production Management. Scanco Multi-Bin for Production Management Enhancements must be installed after installing Sage Production Management and Scanco Multi-Bin to utilized Scanco Multi-Bin for Production Management features.

## Parallel Test Environment

Install The Scanco Production Management Plus into a parallel test Sage 100 environment. Performing a test upgrade or a test new install allows you to resolve issues that may occur during the live upgrade or live new install, reducing downtime and allows you to get a rough estimate of how long the upgrade process will take. Refer to the [Sage Knowledgebase article ID 101266](#) for more information. As not noted in the Sage Knowledgebase article before step 20, third party products must be re-installed after a migration.

## Non-Scanco Third Party Products

Scanco Production Management Plus is not compatible with non-Scanco third party products. If third-party products that integrate with your Sage product are used, please contact your Scanco sales account manager for assistance. If other Sage products are integrated, check with your business partner or Sage to ensure that these components are compatible.

## Installation Order

When Scanco Multi-Bin, Sage Production Management, and Scanco Production Management Plus were purchased, the order of installation is:

1. Sage Production Management
2. Scanco Multi-Bin
3. Scanco Multi-Bin for Sage Production Management Enhancements
4. Scanco Production Management Plus

Follow the installation check lists available in the Sage Production Management, Scanco Multi-Bin, Scanco Multi-Bin for Sage Production Management Enhancements, and Scanco Production Management Plus installation guides.

## Scanco Enhancements

Scanco Manufacturing Efficiency, Scanco In Transit, Scanco Scheduled Bill of Materials, Scanco Property Management 2000 and Scanco Advanced Landed Cost must be uninstalled and a new registration file that does not contain Scanco Manufacturing Efficiency, Scanco In Transit, Scanco Scheduled Bill of Materials and/or Scanco Advanced Landed Cost must be obtained and activated before installing Sage Production Management and Scanco Production Management Plus. Refer to page 18.

## Sage Operations Management

Scanco Production Management Plus may not be installed when Sage Operations Management exists in Sage 100.

Sage Production Management and Sage Operations Management are two different Sage 100 modules. Access the Sage Operations Management/JobOps portal at [portal.jobops.com](http://portal.jobops.com) to download Sage Operations Management, Scanco Multi-Bin for Sage Operations Management, and Mobility for Sage Operations Management product installs, documentation, and hot fixes. Access [jobops.com](http://jobops.com) for information on the Sage Operations Management product line, training classes, or to schedule a demo of Sage Operations Management.

Access the Sage Production Management downloads page at <https://scanco.com/scanco-downloads> to download Sage Production Management, Scanco Multi-Bin for Sage Production Management, Mobility for Sage Production Management, and Scanco Production Management Plus product installers, documentation, and hot fixes.

## Supporting Documentation

Review the Scanco Production Management Plus What's New guide prior to installing Scanco Production Management Plus. This important Scanco Production Management Plus document is available from the Scanco Production Management Plus downloads page at <https://scanco.com/scanco-production-management-plus-downloads>.

Refer to the Sage 100 Installation and System Administrator's Guide for information on installing Sage 100 Standard, Sage 100 Advanced or Sage 100 Premium and Sage 100 2021 Product Update 1 or 2.

Refer to the Scanco Multi-Bin Installation Guide for information on installing or upgrading Scanco Multi-Bin <https://scanco.com/scanco-downloads/>.

Refer to the Scanco Multi-Bin for Sage Production Management Installation Guide for information on installing or upgrading Sage 100 with Sage Production Management and Scanco Multi-Bin. Scanco Multi-Bin for Sage Production Management may be downloaded from <https://scanco.com/prod-mgmt-downloads/>.



**Note:** Please contact your authorized Sage Production Management partner or the Sage Support department at 866-996-7243 or <https://customers.sagenorthamerica.com> for assistance with Sage Production Management. Submit a Scanco Support request at <https://scancohelp.zendesk.com/hc/en-us/requests/new> for assistance with Scanco Multi-Bin and Scanco Production Management Plus.

## Required Sage 100 Modules

The following Sage 100 modules are required to be installed and activated to use Scanco Production Management Plus.

- Library Master
- Common Information
- General Ledger
- Inventory Management
- Accounts Receivable
- Sales Order
- Production Management

# Scanco Production Management Plus Pre-Installation Checklist

Complete the following pre-installation checklist prior to installing Scanco Production Management Plus 7.00.2.0.0 to ensure a successful installation.

- ❑ Do **not** install Scanco Production Management Plus 7.00.2.0.0 when custom modifications exist on Sage modified modules, Sage Production Management, or Scanco Multi-Bin. Custom modifications must be retrofitted to the current Sage 100 version. Please contact your Sage partner or Scanco sales account manager for information on how to obtain a quote for custom modifications to be retrofitted to Sage 100 2021 with Sage Production Management and Scanco Production Management Plus.
- ❑ Do **not** install Scanco Production Management Plus 7.00.2.0.0 when extended solutions or third-party products are installed on the Sage 100 system. Please contact your Sage Production Management partner, the Sage Support department at 866-996-7243 or <https://customers.sagenorthamerica.com>, or a Scanco sales account manager for information on evaluating extended solutions or third-party software.
- ❑ Confirm that the Sage 100 installed version is 7.00.1.0 or 7.00.2.0 for the Sage 100 Standard, Sage 100 Advanced or Sage 100 Premium system. Access Help menu > About Sage to review the currently installed Sage 100 version. To review additional information on the currently installed Sage 100 system in the Sage 100 System Information window, select File menu > Run. Type \*info in the Program field. Select the OK button.
- ❑ Confirm that Scanco Manufacturing Efficiency, Scanco In Transit, Scanco Scheduled Bill of Materials, Scanco Property Management 2000, and/or Scanco Advanced Landed Cost are uninstalled and a new registration file not containing a registration number for these Scanco enhancement modules is activated in Sage 100. Refer to page 18 for information on how to uninstall and unregister Scanco Manufacturing Efficiency, Scanco In Transit, Scanco Scheduled Bill of Materials and Scanco Advanced Landed Cost.
- ❑ Backup the entire Sage 100 Standard, Sage 100 Advanced or Sage 100 Premium system, including programs and data files, after all data entry files are updated, and before installing Scanco Production Management Plus.
- ❑ Download the Scanco Production Management Plus 7.00.2.0.0 installation file and specify registration information from <https://scanco.com/scanco-production-management-plus-downloads>.

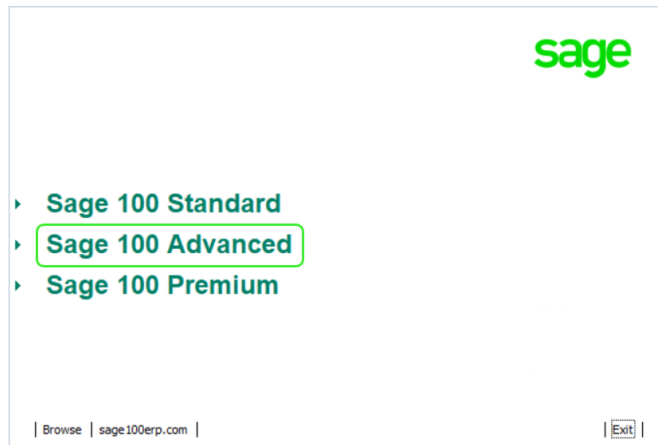
 **Warning:** A new registration file must be requested and activated

1. For a new installation of Scanco Production Management Plus,
2. For a new installation of Scanco Production Management Plus,
3. When a module or add on was recently purchased or previously not activated,
4. When the user count changes,
5. When migrating from a lower version, for example 2020.4 version 6.20.4.0 to 2021.2 version 7.00.2.0, or
6. When the subscription plan has expired or was modified.

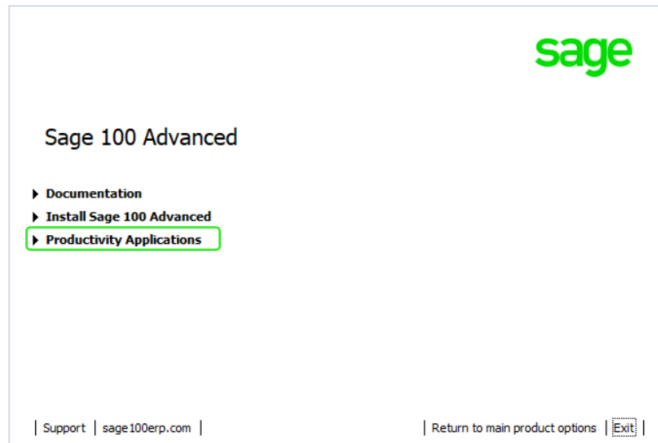
A new registration file is not required for service releases or product updates when a registration file was previously activated. For example, a new registration file is not required when upgrading from 2021.1 version 7.00.1.0.0 to 2021.2 version 7.00.2.0.0 and the purchased products, user count, and subscription plan have not changed.

The Sage Production Management downloads page can be accessed from the Sage 100 2021 installation wizard.

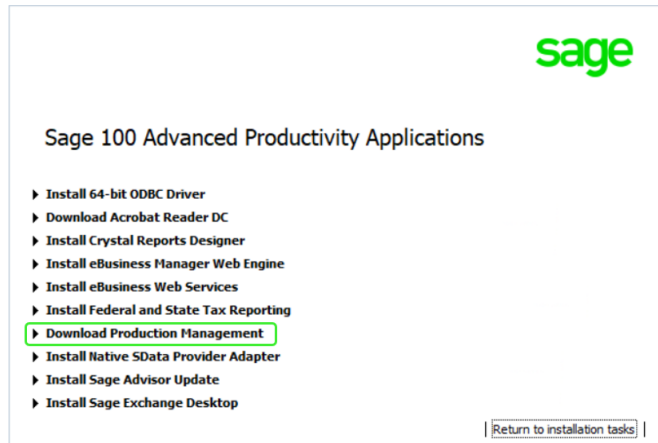
1. From the Sage 100 2021 installation Autorun screen, click a version of Sage 100.



2. From the Installation Tasks menu, click Productivity Applications.



3. Click Download Production Management to access the Sage Production Management downloads page.

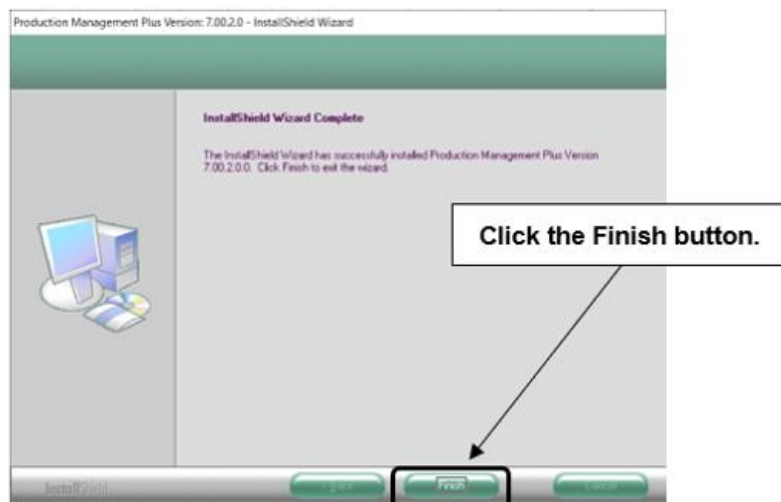


# Scanco Production Management Plus Installation Checklists

## New Installation of Sage 100 with Scanco Production Management Plus

- ❑ Complete the Scanco Production Management Plus pre-installation checklist.
- ❑ Install Sage 100 2021. Refer to the Sage 100 2021 Installation and System Administrator's Guide.
- ❑ Install Product Update 1 or 2 for Sage 100 2021. Refer to the Sage 100 2021 Customer Upgrade Guide, the Sage 100 2021 Upgrade Checklist, and Sage Support for information on installing Sage Product Updates.
- ❑ Run the Sage 100 workstation setup process on all applicable workstations. Refer to the Sage 100 2021 Installation and System Administrator's Guide.
- ❑ Install Sage Production Management 7.00.1.0.0 or 7.00.2.0.0. Refer to the Sage Production Management Installation guide.
- ❑ If hot fixes are available on the Sage Production Management Downloads page for Sage Production Management version 7.00.1.0.0 or 7.00.2.0.0, install Sage Production Management hot fixes. Refer to the Sage Production Management Installation guide.
- ❑ Install Scanco Production Management Plus 7.00.2.0.0. Refer to the Installing Scanco Production Management Plus section on page 11.
- ❑ If hot fixes are available on the Scanco Production Management Plus Downloads page for Scanco Production Management Plus version 7.00.1.0.0 or 7.00.2.0.0, install Scanco Production Management Plus hot fixes. Refer to the Scanco Production Management Plus Hot Fixes section on page 18.
- ❑ Define role security for Sage Production Management and Scanco Product Registration from Library Master Main menu > Role Maintenance.

Register Sage Production Management and Scanco Production Management Plus from Library Master Setup menu > Scanco Product Registration. Refer to the



- ❑ Registering Scanco Production Management Plus section on page 16.
- ❑ Activate the required and optional Sage 100 modules and the Sage Production Management module from Library Master Main menu > Company Information. Refer to the Sage Production Management installation guide.
- ❑ Create and set up company data files for required and optional Sage 100 modules that integrate with Sage Production Management. Refer to the Sage Production Management installation guide.
- ❑ Verify the Sage 100 and Sage Production Management versions by accessing Production Management Setup menu > About Production Management. Refer to the About Production Management section on page 19.

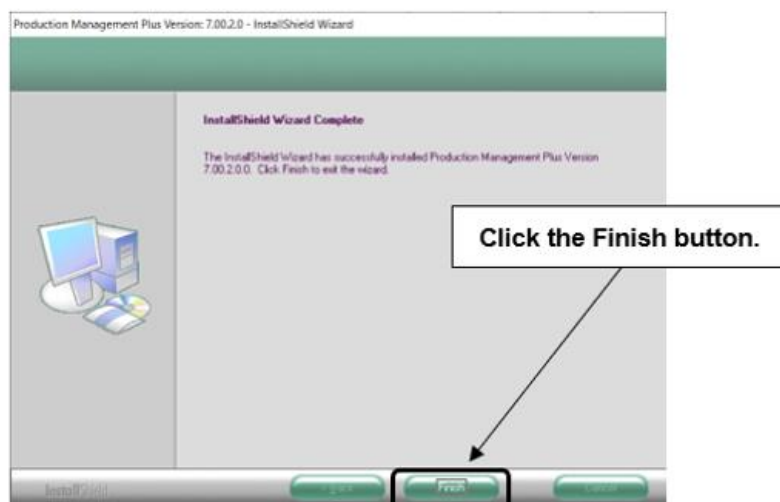


- ❑ Access Production Management Setup menu > Production Management Options to run the Production Management Setup Wizard. Refer to the Sage Production Management installation guide.
- ❑ Set up the Sage Production Management module.
- ❑ Set up Scanco Production Management Plus options in Sales Order Setup menu > Sales Order Options. Refer to the Scanco Production Management Plus What's New guide.

## **Upgrading Sage 100 with a New Installation of Sage Production Management and Scanco Production Management Plus**

- ❑ Complete the Scanco Production Management Plus pre-installation checklist.
- ❑ Create a backup of the MAS90 folder. Creating a backup now will save time to revert to the folder's original state, if needed.
- ❑ Conduct a parallel installation of Sage 100 2021 when upgrading Sage 100 from version 2020 or lower. Refer to the Sage 100 2021 Customer Upgrade Guide and the Sage 100 2021 Upgrade Checklist.
- ❑ Install Sage 100 2021 Product Update 1 or 2. Refer to the Sage 100 2021 Customer Upgrade Guide, the Sage 100 2021 Upgrade Checklist, and Sage Support for information on installing Sage Product Updates.
- ❑ Run the Sage 100 workstation setup process on all applicable workstations, when applicable. Refer to the Sage 100 2021 Installation and System Administrator's Guide.
- ❑ Migrate and convert Sage 100 data to 2021 version 7.00.1.0 or 7.00.2.0 when upgrading Sage 100 from a version lower than 2021. Refer to the Sage 100 2021 Installation and System Administrator's Guide.
- ❑ Create a backup of the MAS90 folder. Creating a backup now will save time to revert to the folder's original state, if needed.
- ❑ Install Sage Production Management 7.00.1.0.0 or 7.00.2.0.0. Refer to the Sage Production Management Installation Guide.
- ❑ If hot fixes are available on the Sage Production Management Downloads page for Sage Production Management version 7.00.1.0.0 or 7.00.2.0.0, install Sage Production Management 7.00.1.0.0 or 7.00.2.0.0 hot fixes. Refer to the Sage Production Management Installation Guide.
- ❑ Install Scanco Production Management Plus 7.00.2.0.0. Refer to the Installing Scanco Production Management Plus section on page 11.
- ❑ If hot fixes are available on the Scanco Production Management Plus Downloads page for Scanco Production Management Plus version 7.00.1.0.0 or 7.00.2.0.0, install Scanco Production Management Plus hot fixes. Refer to the Scanco Production Management Plus Hot Fixes section on page 18.
- ❑ Back up all company data files before conducting the company conversion process.
- ❑ Define role security for Sage Production Management and Scanco Product Registration from Library Master Main menu > Role Maintenance.

- ❑ Register Sage Production Management and Scanco Production Management Plus from Library Master Setup menu > Scanco Product Registration. Refer to the

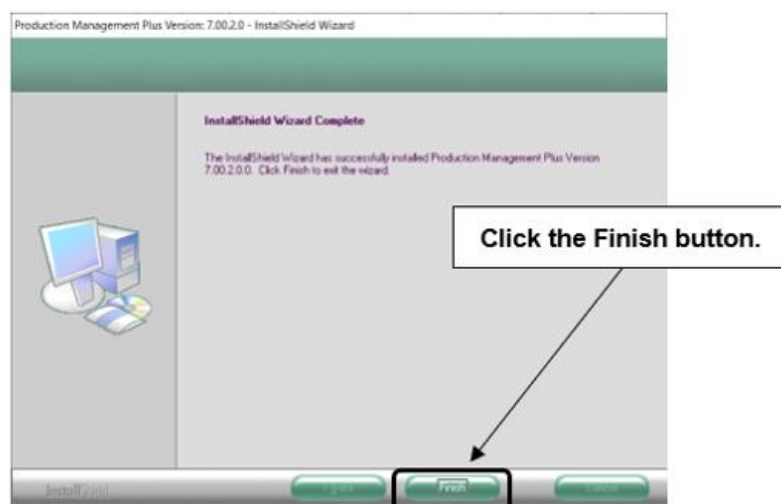


- ❑ Registering Scanco Production Management Plus section on page 16.
- ❑ Run the data conversion process from Library Master Main menu > Company Information.
- ❑ Activate the required and optional Sage 100 modules, if not already activated, and the Sage Production Management module from Library Master Main menu > Company Information. Refer to the Sage Production Management Installation Guide.
- ❑ Create and set up company data files for required and optional Sage 100 modules that integrate with Sage Production Management. Refer to the Sage Production Management Installation Guide.
- ❑ Define role security for Sage Production Management and Scanco Product Registration from Library Master Main menu > Role Maintenance.
- ❑ Verify the Sage 100 and Sage Production Management versions by accessing Production Management Setup menu > About Production Management. Refer to the About Production Management section on page 19.
- ❑ Access the Custom Office Utilities menu and run the update customized panels by selecting Custom Office Utilities menu > Update Customized Panels to Current Level. Review the placement of all user-defined fields. Refer to the Sage 100 2021 Customer Upgrade Guide and the Sage 100 2021 Upgrade Checklist.
- ❑ Reset all grids.
- ❑ Review migrated data in all Sage 100 modules and companies.
- ❑ Set up Production Management options using the Production Management Setup Wizard. Access the setup wizard from Production Management Setup menu > Production Management Options.
- ❑ Set up the Sage Production Management module.
- ❑ Set up Scanco Production Management Plus options in Sales Order Setup menu > Sales Order Options. Refer to the Scanco Production Management Plus What's New guide.

## Upgrading Sage 100 and Production Management to 2021.2 with a new installation of Scanco Production Management Plus

- ❑ Complete the Scanco Production Management Plus pre-installation checklist.
- ❑ Create a backup of the MAS90 folder. Creating a backup now will save time to revert to the folder's original state, if needed.
- ❑ Conduct a parallel installation of Sage 100 2021 when upgrading from version 2019 or 2020. Refer to the Sage 100 2021 Customer Upgrade Guide and the Sage 100 2021 Upgrade Checklist.

- ❑ Install Sage 100 2021 Product Update 1 or 2. Refer to the Sage 100 2021 Customer Upgrade Guide, the Sage 100 2021 Upgrade Checklist, and Sage Support for information on installing Sage Product Updates.
- ❑ Run the Sage 100 workstation setup process on all applicable workstations. Refer to the Sage 100 2021 Installation and System Administrator's Guide.
- ❑ Install Sage Production Management 7.00.1.0.0 or 7.00.2.0.0. Refer to the Sage Production Management Installation Guide.
- ❑ Migrate data following the Sage 100 parallel migration process. Refer to the Sage 100 2021 Customer Upgrade Guide and the Sage 100 2021 Upgrade Checklist.
- ❑ Reinstall Sage Production Management 7.00.1.0.0 or 7.00.2.0.0. Refer to the Sage Production Management Installation Guide.
- ❑ If hot fixes are available on the Sage Production Management Downloads page for Sage Production Management version 7.00.1.0.0 or 7.00.2.0.0, install Sage Production Management 7.00.1.0.0 or 7.00.2.0.0 hot fixes. Refer to the Sage Production Management Installation Guide.
- ❑ Back up all company data files before proceeding to the company conversion process.
- ❑ Register Sage Production Management and Scanco Production Management Plus from Library Master Setup menu > Scanco Product Registration. Refer to the



- ❑ Registering Scanco Production Management Plus section on page 16.
- ❑ Run the data conversion process from Library Master Main menu > Company Information.
- ❑ Verify the Sage 100 and Sage Production Management versions by accessing Production Management Setup menu > About Production Management. The Sage 100 version should display as 7.00.2.0 and the Sage Production Management version should display as 7.00.2.0.0. Refer to the About Production Management section on page 19.
- ❑ If not previously conducted during the company conversion process from Company Information, access the Custom Office Utilities menu and run the update customized panels by selecting Custom Office Utilities menu > Update Customized Panels to Current Level. Review the placement of all user-defined fields. Refer to the Sage 100 2021 Customer Upgrade Guide and the Sage 100 2021 Upgrade Checklist.
- ❑ Reset all grids.
- ❑ Review migrated data in all Sage 100 modules, including Sage Production Management.
- ❑ Create a backup of the MAS90 folder. Creating a backup now will save time to revert to the folder's original state, if needed.
- ❑ Install Scanco Production Management Plus 7.00.2.0.0. Refer to the Installing Scanco Production Management Plus section on page 11.

- ❑ If hot fixes are available on the Scanco Production Management Plus Downloads page for Scanco Production Management Plus version 7.00.1.0.0 or 7.00.2.0.0, install Scanco Production Management Plus hot fixes. Refer to the Scanco Production Management Plus Hot Fixes section on page 18.
- ❑ Set up Scanco Production Management Plus options in Sales Order Setup menu > Sales Order Options. Refer to the Scanco Production Management Plus What's New guide.

## **Upgrading Scanco Production Management Plus 2021.1 to 2021.2**

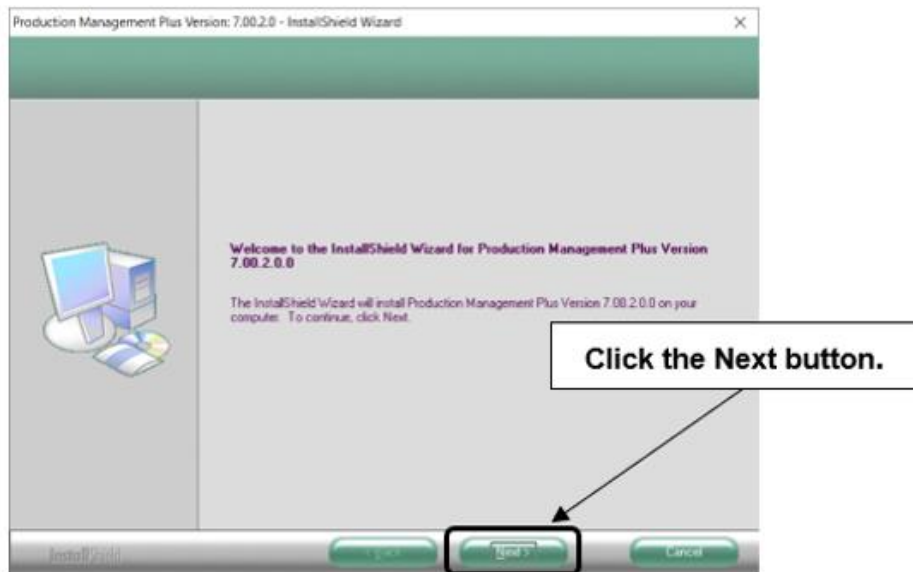
- ❑ Complete the Sage Production Management 7.00.2.0.0 pre-installation checklist.
- ❑ Create a backup of the MAS90 folder. Creating a backup now will save time to revert to the folder's original state, if needed.
- ❑ Install Sage 100 2021 Product Update 1 or 2. Refer to the Sage 100 2021 Customer Upgrade Guide, the Sage 100 2021 Upgrade Checklist or Sage Support for more information on installing a Sage 100 Product Update.
- ❑ Install Sage Production Management 7.00.1.0.0 or 7.00.2.0.0. Refer to the Sage Production Management Installation Guide.
- ❑ If hot fixes are available on the Sage Production Management Downloads page for Sage Production Management versions 7.00.1.0.0 or 7.00.2.0.0, install Sage Production Management 7.00.1.0.0 or 7.00.2.0.0 hot fixes. Refer to the Sage Production Management installation guide.
- ❑ Install Scanco Production Management Plus 7.00.2.0.0. Refer to the Installing Scanco Production Management Plus section on page 11.
- ❑ If hot fixes are available on the Scanco Production Management Plus Downloads page for Scanco Production Management Plus version 7.00.1.0.0 or 7.00.2.0.0, install Scanco Production Management Plus hot fixes. Refer to the Scanco Production Management Plus Hot Fixes section on page 18.
- ❑ Back up all company data files before proceeding to the company conversion process.
- ❑ Run the data conversion process from Library Master Main menu > Company Information.
- ❑ Verify the Sage 100 and Sage Production Management versions by accessing Production Management Setup menu > About Production Management. The Sage 100 version should display as 7.00.2.0 and the Sage Production Management version should display as 7.00.2.0.0. Refer to the About Production Management section on page 19.
- ❑ If not previously conducted during the company conversion process from Company Information, access the Custom Office Utilities menu and run the update customized panels by selecting Custom Office Utilities menu > Update Customized Panels to Current Level. Review the placement of all user-defined fields. Refer to the Sage 100 2021 Customer Upgrade Guide and the Sage 100 2021 Upgrade Checklist.
- ❑ Reset all grids.
- ❑ Review data in all Sage 100 modules, including Sage Production Management.

## **Installing Scanco Production Management Plus**

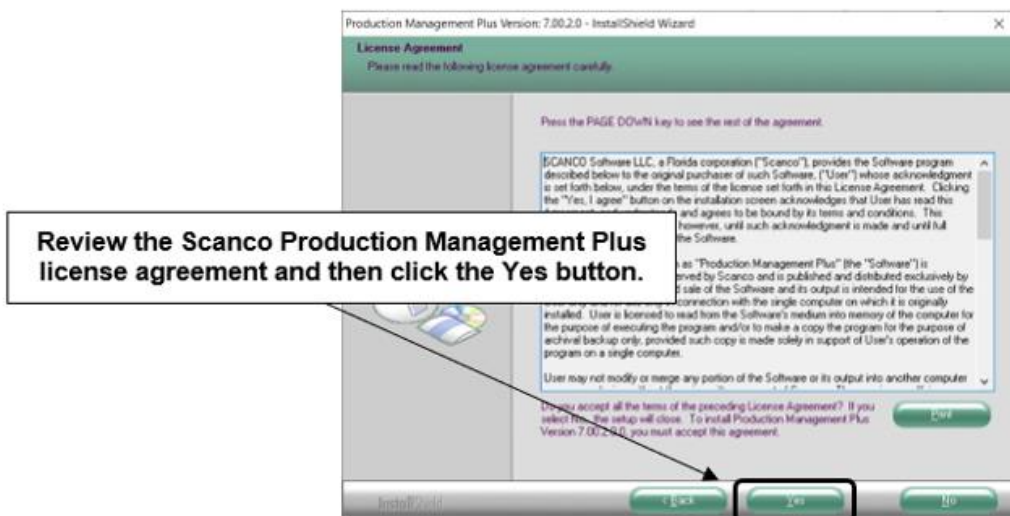
Conduct the following steps after Sage 100 2021. Product Update 1 or 2, and Sage Production Management 7.00.1.0.0 or 7.00.2.0.0 are installed successfully.

### **How to Install Scanco Production Management Plus**

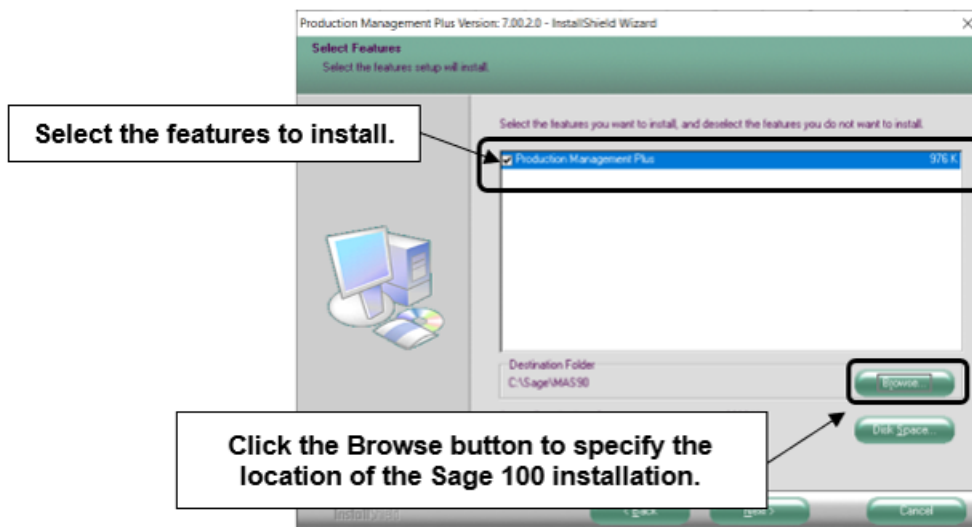
1. Download the Production\_Management\_Plus\_2021\_2\_0.exe file from the Scanco Production Management Plus Downloads page at <https://scanco.com/scanco-production-management-plus-downloads>.
2. Right click on the Scanco Production Management Plus 7.00.2.0.0 executable file.
3. Select Run as administrator.



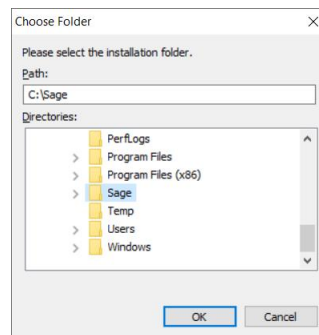
4. Select the Next button from the Scanco Production Management Plus Welcome window.
5. Review the Scanco Production Management Plus License Agreement.



6. Select the Yes button to agree to the Scanco Production Management Plus License Agreement and to continue with the Scanco Production Management Plus installation process.
7. Select the Production Management Plus check box to install Scanco Production Management Plus .0.0.



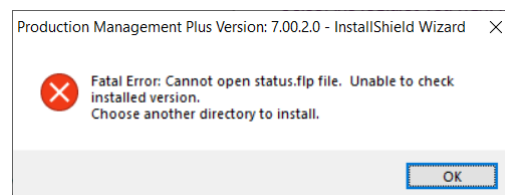
Accept the default location of Sage 100 or select the Browse button to specify the location of Sage 100. The Choose Folder window displays after the Browse button is selected.



Specify the location of Sage 100 in the Path field. Select the OK button to return to the Select Features window.

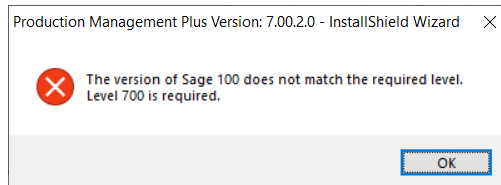
8. Select the Next button from the Select Features window. The installed version of Sage 100 Standard, Sage 100 Advanced or Sage 100 Premium is validated. A warning message or the Install Scanco Production Management Plus window displays.

**Warning:** Scanco Production Management Plus 7.00.2.0.0 must be installed to the same location where Sage 100 Standard, Sage 100 Advanced or Sage 100 Premium is installed. When an invalid directory location is entered in the Destination Folder field found on the Select Features window, the following message displays.

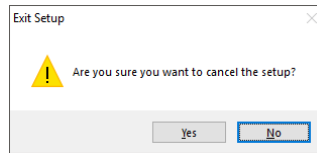


Select the OK button and modify the location where Sage 100 Standard, Sage 100 Advanced or Sage 100 Premium is installed.

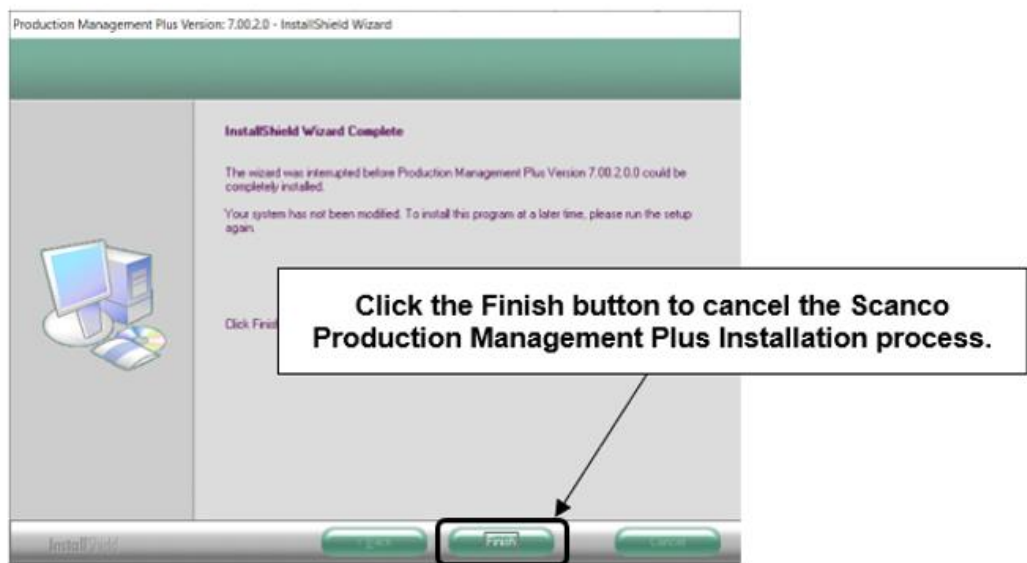
**Warning:** When Sage 100 is installed but is not version 7.00.1.0 or 7.00.2.0, the following message displays.



Select OK and cancel the Scanco Production Management Plus installation process. Select the Cancel button from the Select Features window. The following message displays.

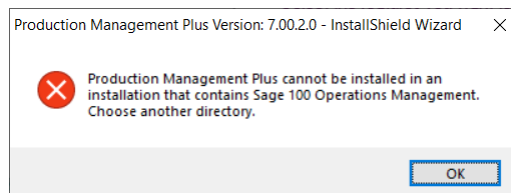


Select Yes in the message. Select the Finish button from the InstallShield Wizard Complete window to cancel the Scanco Production Management Plus installation process.



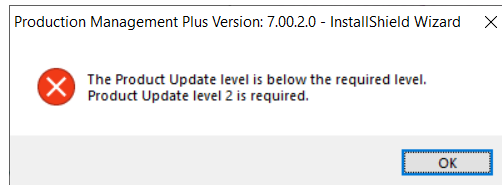
Install Sage 100 2021 version 7.00.1.0 OR 7.00.2.0 and then install Sage Production Management 7.00.1.0.0 OR 7.00.2.0.0.

**Warning:** Scanco Production Management Plus may not be installed in the same location where Sage 100 Operations Management is installed. The following message displays when the selected location contains Sage 100cloud Manufacturing.



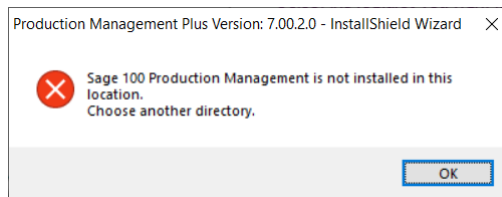
Select the OK button and then Cancel from the Select Features window.

**Warning:** When the Sage 100 2021 Product Update 1 or 2 has not been installed at the specified Sage 100 Standard, Sage 100 Advanced or Sage 100 Premium location, the following message displays.



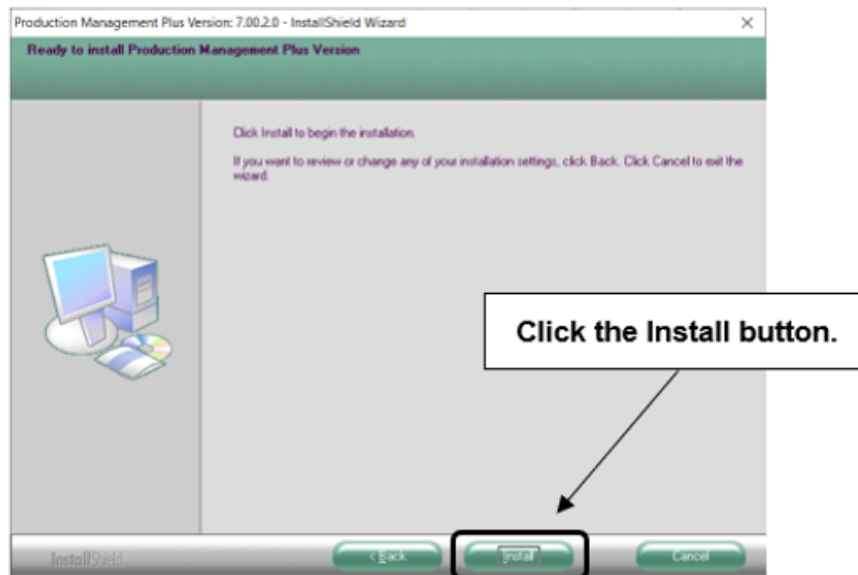
Select the OK button and then Cancel the Scanco Production Management Plus installation process. Install Product Update 1 or 2, install Sage Production Management 7.00.1.0.0 or 7.00.2.0.0 and then install Scanco Production Management Plus.

**Warning:** When the Sage Production Management has not been installed at the selected Sage 100 location, the following message displays.



Select the OK button and then cancel the Scanco Production Management Plus installation process. Install Sage Production Management 7.00.1.0.0 or 7.00.2.0.0 and then install Scanco Production Management Plus.

9. Select the Install button from the following window to install Scanco Production Management Plus.



Select the Back button to return to the Select Features window. Select the Cancel button, select Yes in the message *Are you sure you want to cancel the setup?* and the Finish button from the InstallShield Wizard Complete window to cancel the Scanco Production Management Plus installation process.

10. Select the Finish button from the InstallShield Wizard Complete window to complete the Scanco Production Management Plus installation process.





## Registering Scanco Production Management Plus

A new registration file must be requested and activated

1. For a new installation of Sage Production Management,
2. For a new installation of Scanco Production Management Plus,
3. When a new module is purchased, such as Scanco Multi-Bin,
4. When the Sage Production Management user count changes,
5. When migrating from a lower year version, for example 2020.4 version 6.20.4.0 to 2021.2 version 7.00.2.0 , or
6. When the subscription plan has expired or modified.

A new registration file is not required for service releases or product updates when a registration file was previously activated at the current year version. For example, a new registration file is not required when moving Sage Production Management from version 7.00.1.0.0 to 7.00.2.0.0.

## How to Obtain Scanco Production Management Plus Registration

1. Access the Scanco Production Management Plus Downloads page <https://scanco.com/scanco-production-management-plus-downloads>.
2. Scroll down and click on Registration File Request.

### REGISTRATION FILE REQUEST FORM

Please use the form below to request your Sage Production Management, Sage Inventory Requirements Planning, Scanco Multi-Bin for Sage Production Management, Mobility for Sage Production Management, and Sage Shop Floor Mobile App registration file.

**NOTE: If you are a reseller requesting a registration file for an end-user, please complete all fields with the end-user's information.**

#### CUSTOMER INFORMATION

This information will need to match the information on record with Sage for the requested instance and will be registered to (your company).

COMPANY NAME \*

SAGE BUSINESS PARTNER

SAGE CUSTOMER NUMBER \*

SAGE 100 SERIAL NUMBER \*

SAGE VERSION (INCLUDING PRODUCT UPDATE) \*

SAGE 100 SYSTEM ARCHITECTURE \*

CONTACT INFORMATION

Requested keys will be sent to this contact.

CONTACT NAME \*

PHONE NUMBER \*

CONTACT EMAIL \*




## Scanco Production Management Plus Hot Fixes


Occasionally hot fixes are required to be installed after installing Scanco Production Management Plus. Access Scanco Production Management Plus hot fixes from the Scanco Production Management Plus Downloads page <https://scanco.com/scanco-production-management-plus-downloads>.

### How to Install Scanco Production Management Plus Hot Fixes

1. Access the Scanco Production Management Plus Downloads page <https://scanco.com/scanco-production-management-plus-downloads>.
2. Click on the Scanco Production Management Plus menu option.
3. Click on Hot Fixes from the Scanco Production Management Plus menu.
4. Review the available hot fixes for Scanco Production Management Plus for the currently installed version.

 **Warning:** Hot fixes are version and module specific. Only install hot fixes for the current Scanco Production Management Plus version.

5. Click on a hot fix link to be directed to the download file.
6. Click on the Download button.
7. Specify the location to download the hot fix.
8. Extract the hot fix file to the MAS90 directory where Sage 100, Production Management, and Scanco Production Management Plus are installed.

 **Warning:** If the hot fix zip file is extracted to a location other than the MAS90 directory, the hot fix programs must be copied to the file location specified in the hot fix zip file.

9. Select to replace the files in the destination if the hot file was extracted to the MAS90 directory where Sage 100, Production Management, and Scanco Production Management Plus are installed. The hot fix program is now located in the correct directory in the Sage 100 installation.
10. Review the document(s) included in the hot fix download file. Descriptions and instructions are included in this documentation.

## Scanco Manufacturing Efficiency, In Transit, Scheduled Bill of Materials and Advanced Landed Cost

The following Scanco enhancement modules do not integrate and are not compatible with Sage Production Management and Scanco Production Management Plus.

- Scanco Multi-Bin: On the Water
- Scanco Multi-Bin: Standard Costs for Lot Items
- Scanco Manufacturing Efficiency
- Scanco In Transit
- Scanco Scheduled Bill of Materials
- Scanco Advanced Landed Cost
- Scanco Property Management 2000

 **Note:** Refer to the Sage Production Management Installation guide.

## About Production Management

Use the About Production Management window to review the current Sage 100 and Production Management version numbers. The information available in the About Production Management window is also used when contacting Sage Support.

Access this window from Production Management Setup menu > About Production Management.



Select the OK button to close the About Production Management window.