



Scanco In-Transit 2021.2

Installation Guide

Scanco In-Transit Version 7.0021

Sage 100 Version 7.00.2.0

March 2022

© Copyright 2021 All rights reserved. Scanco In-Transit is a trademark of Scanco Software, LLC. Sage, the Sage logos, and the Sage product and service names mentioned herein are registered trademarks or trademarks of Sage Software, Inc., or its affiliated entities. All other trademarks are the property of their respective owners. The contents herein are summary in nature and subject to change without notification from Scanco Software, LLC. Scanco Software, LLC, accepts no responsibility for inadvertent errors or omissions.

Scanco Software, LLC
1000 N Tamiami Trail
Suite 201
Nokomis, FL 34275

Contents

Introduction to Scanco In-Transit 4

About this Guide 4

Important Information 4

Parallel Test Environment 4

Third Party Products 4

Installation Order with Scanco Multi-Bin 4

Developer Code Change 4

Sage Production Management and Sage Operations Management 5

Required Sage 100 Modules 5

Need Assistance? 5

Scanco In-Transit Pre-Installation Checklist 5

Scanco In-Transit Installation Checklists 6

New Installation of Sage 100 with Scanco In-Transit 6

New Installation of Sage 100 with Scanco Multi-Bin and In-Transit 6

Upgrading Sage 100 with a New Installation of Scanco In-Transit 7

Upgrading Sage 100 and Scanco In-Transit 8

Upgrading Sage 100, Scanco Multi-Bin, and Scanco In-Transit 8

Upgrading Sage 100 and Scanco Multi-Bin with a New Install of Scanco In-Transit 9

Upgrading Sage 100 and Scanco In-Transit with a New Install of Scanco Multi-Bin 10

Installing Scanco In-Transit 11

How to Install Scanco In-Transit 11

Registering Scanco In-Transit 15

How to Obtain Scanco In-Transit Registration 15

How to Register Scanco In-Transit 16

Scanco In-Transit Hot Fixes 18

How to Install Scanco In-Transit Hot Fixes 18

Scanco In-Transit Developer Code Change 18

Update Custom Panels to Current Level 18

To merge custom panels: 18

Introduction to Scanco In-Transit

Scanco In-Transit provides the opportunity to sell items by weight. The number of cases sold per item may be specified from Sales Order Entry. The weight for each case sold is documented when invoicing a customer's order. Scanco In-Transit may be used with and without Scanco Multi-Bin installed in Sage 100. Refer to the Scanco In-Transit User Guide for more information on Scanco In-Transit functionality.

About this Guide

This guide provides the information necessary for installing Scanco In-Transit.

Important Information

Read this guide completely before installing Scanco In-Transit version 7.0021. The Scanco In-Transit 7.0021 installation includes Scanco In-Transit and Sage 100 Standard, Advanced or Premium modified programs. Before installing Scanco In-Transit 7.0021, install and register Sage 100 Standard, Sage 100 Advanced or Sage 100 Premium 2021 with Product Update 2. When Scanco Multi-Bin is to be used with Scanco In-Transit, install Scanco Multi-Bin before installing Scanco In-Transit.

Refer to the Sage 100 Installation and System Administrator's Guide for information on installing Sage 100 Standard, Sage 100 Advanced or Sage 100 Premium and Sage 100 2021 Product Update 2.

Please refer to the Scanco Multi-Bin Installation guide for information on installing Scanco Multi-Bin. Scanco Multi-Bin must be installed before installing Scanco In-Transit to utilize Scanco In-Transit features.

Parallel Test Environment

Install Scanco In-Transit 7.0021 into a parallel test Sage 100 environment. Performing a test upgrade or a test new install allows you to resolve issues that may occur during the live upgrade or live new install, reducing downtime and allows you to get a rough estimate of how long the upgrade process will take. Refer to the [Sage Knowledgebase article ID 101266](#) for more information. As not noted in the Sage Knowledgebase article before step 20, third party products must be re-installed after a migration.


Third Party Products

Scanco In-Transit 7.0021 may not be compatible with non-Scanco third party products. If third-party products that integrate with your Sage product are used, check with the vendor of the third-party product to ensure that the third-party product is fully compatible with this release. If other Sage products are integrated, check with your business partner or Sage to ensure that these components are compatible.

Installation Order with Scanco Multi-Bin

The order of installation for Scanco In-Transit when Scanco Multi-Bin and Scanco In-Transit are installed is as follows.


1. Sage 100
2. Scanco Multi-Bin
3. Scanco In-Transit

 **Warning:** When Scanco In-Transit exists in Sage 100 and Scanco Multi-Bin is added to Sage 100, Scanco In-Transit must be reinstalled after installing Scanco Multi-Bin. Refer to the Upgrading Sage 100 and Scanco In-Transit with a New Install of Scanco Multi-Bin section on page 10.

Developer Code Change

Starting with Scanco In-Transit 7.0021, the developer code has been changed from 404 (ACS Group) to 140 (Scanco). When upgrading from 2018 or lower, a thorough review of all data is strongly advised before processing in Scanco In-Transit 7.0021.

A purge process to remove field using the 404 developer code is currently not available in Scanco In-Transit version 7.0021. A purge process will be available in a future release. Leaving the 404 Scanco In-Transit fields in Sage 100 tables will not cause problems with Scanco In-Transit functionality or data. Data values will update to the correct 140 Scanco In-Transit fields.

 **Warning:** Any custom Crystal Reports referencing 404 Scanco In-Transit data files and/or fields must be manually updated by a Sage Partner or internal Crystal Reports specialist. A conversion utility to automate this process is not available in Scanco In-Transit 7.0021.

Sage Production Management and Sage Operations Management

Scanco In-Transit does not integrate with Sage Production Management or Sage Operations Management. Scanco Multi-Bin does integrate with Scanco In-Transit.

Required Sage 100 Modules

The following Sage 100 modules are required to be installed and activated to use Scanco In-Transit.

- Library Master
- Common Information
- General Ledger
- Inventory Management
- Accounts Receivable
- Sales Order

Need Assistance?

Please contact Scanco Support at support@scanco.com for assistance with Scanco In-Transit.

Scanco In-Transit Pre-Installation Checklist

Complete the following pre-installation checklist prior to installing Scanco In-Transit 7.0021 to ensure a successful installation.

- ❑ Do **not** install Scanco In-Transit 7.0021 when custom modifications exist on Sage modified modules or Scanco products. Custom modifications must be retrofitted to the current Sage 100 version. Please contact your Sage partner or Scanco for information on how to obtain a quote for custom modifications to be retrofitted to Sage 100 2021 with Scanco In-Transit 7.0021.
- ❑ Do **not** install Scanco In-Transit 7.0021 when extended solutions or third-party products are installed on the Sage 100 system. Please contact your Sage partner or the Scanco Support department at support@scanco.com for information on evaluating extended solutions or third-party software.
- ❑ Confirm that the Sage 100 installed version is 7.00.2.0 for the Sage 100 Standard, Sage 100 Advanced or Sage 100 Premium system. Access Help menu > About Sage to review the currently installed Sage 100 version. To review additional information on the currently installed Sage 100 system in the Sage 100 System Information window, select File menu > Run. Type *info in the Program field. Select the OK button.
- ❑ Backup the entire Sage 100 Standard, Sage 100 Advanced or Sage 100 Premium system, including programs and data files, after all data entry files are updated, and before installing Scanco In-Transit 7.0021.
- ❑ Download the Scanco In-Transit 7.0021 installation file and specify registration information from the Scanco Downloads page <https://scanco.com/scanco-downloads>.

 **Warning:** A new registration file must be requested and activated

1. For a new installation of Scanco In-Transit,
2. When a module or add on was recently purchased or previously not activated,
3. When the user count changes,
4. When migrating from a lower version, for example 2018.3 version 6.00.3.0 to 2021.2 version 7.00.2.0, or
5. When the subscription plan has expired or was modified.

A new registration file is not required for service releases or product updates when a registration file was previously activated. For example, a new registration file is not required when upgrading from 2021.0 version 7.00.0.0.0 to 2021.2 version 7.00.2.0.0 and the purchased products, user count, and subscription plan have not changed.

Scanco In-Transit Installation Checklists

New Installation of Sage 100 with Scanco In-Transit

- ❑ Complete the Scanco In-Transit 7.0021 pre-installation checklist. Refer to the Scanco In-Transit Pre-Installation Checklist on page 5.
- ❑ Install Sage 100 2021. Refer to the Sage 100 2021 Installation and System Administrator's Guide.
- ❑ Install Product Update 2 for Sage 100 2021. Refer to the Sage 100 2021 Customer Upgrade Guide, the Sage 100 2021 Upgrade Checklist, and Sage Support for information on installing Sage Product Updates.
- ❑ Run the Sage 100 workstation setup process on all applicable workstations. Refer to the Sage 100 2021 Installation and System Administrator's Guide.
- ❑ Install Scanco In-Transit 7.0021. Refer to the Installing Scanco In-Transit on page 11.
- ❑ If hot fixes are available on the Scanco Downloads page for Scanco In-Transit version 7.0021, install Scanco In-Transit 7.0021 hot fixes. Refer to the Scanco In-Transit Hot Fixes section on page 18.
- ❑ Define role security for Scanco In-Transit and Scanco Product Registration from Library Master Security menu > Role Maintenance.
- ❑ Activate Scanco In-Transit 7.0021 from Library Master Setup menu > Scanco Product Registration. Refer to the Registering Scanco In-Transit section on page 15.
- ❑ Activate the required and optional Sage 100 modules from Library Master Main menu > Company Information. Refer to the Sage 100 2021 Installation and System Administrator's Guide or Sage 100 Online help.
- ❑ Create and set up company data files for required and optional Sage 100 modules. Refer to the Sage 100 2021 Installation and System Administrator's Guide or Sage 100 Online help.

New Installation of Sage 100 with Scanco Multi-Bin and In-Transit

- ❑ Complete the Scanco In-Transit 7.0021 pre-installation checklist. Refer to the Scanco In-Transit Pre-Installation Checklist on page 5.
- ❑ Install Sage 100 2021. Refer to the Sage 100 2021 Installation and System Administrator's Guide.
- ❑ Install Product Update 2 for Sage 100 2021. Refer to the Sage 100 2021 Customer Upgrade Guide, the Sage 100 2021 Upgrade Checklist, and Sage Support for information on installing Sage Product Updates.
- ❑ Run the Sage 100 workstation setup process on all applicable workstations. Refer to the Sage 100 2021 Installation and System Administrator's Guide.
- ❑ Install Scanco Multi-Bin 7.0021. Refer to the Scanco Multi-Bin Installation Guide.
- ❑ If hot fixes are available on the Scanco Downloads page for Scanco Multi-Bin 2021.2 version 7.0021, download and install the hot fixes. Refer to the Scanco Multi-Bin Installation Guide.
- ❑ Install Scanco In-Transit 7.0021. Refer to the Installing Scanco In-Transit section on page 11.
 - ⚠ **Warning:** Scanco In-Transit must be installed after installing Scanco Multi-Bin to successfully integrate the two Scanco products.
- ❑ If hot fixes are available on the Scanco Downloads page for Scanco In-Transit version 7.0021, install Scanco In-Transit 7.0021 hot fixes. Refer to the Scanco In-Transit Hot Fixes section on page 18.
- ❑ Define role security for Scanco Multi-Bin, Scanco In-Transit, and Scanco Product Registration from Library Master Security menu > Role Maintenance.
- ❑ Activate the required and optional Sage 100 modules from Library Master Main menu > Company Information. Refer to the Sage 100 2021 Installation and System Administrator's Guide or Sage 100 Online help.

- ❑ Create and set up company data files for required and optional Sage 100 modules that integrate with Scanco Multi-Bin and Scanco In-Transit. Refer to the Sage 100 2021 Installation and System Administrator's Guide or Sage 100 Online help.
- ❑ Activate Scanco Multi-Bin and Scanco In-Transit from Library Master Setup menu > Scanco Product Registration. Refer to the Registering Scanco In-Transit section on page 15.
- ❑ Run the Sage data conversion process from Library Master Main menu > Company Maintenance. Refer to the Scanco Multi-Bin Installation Guide.
- ❑ Create Multi-Bin Data Files by selecting the Prepare button from Library Master Setup menu > Scanco Product Registration. Refer to the Scanco Multi-Bin Installation Guide.
 - ⚠ **Warning:** This step must be completed for all companies including companies where Scanco Multi-Bin is not activated. The Prepare Data process ensure that data dictionaries are properly merged.
- ❑ Set up Sage activated modules and Scanco Multi-Bin.

Upgrading Sage 100 with a New Installation of Scanco In-Transit

- ❑ Complete the Scanco In-Transit 7.0021 pre-installation checklist. Refer to the Scanco In-Transit Pre-Installation Checklist on page 5.
- ❑ Create a backup of the MAS90 folder. Creating a backup now will save time to revert to the folder's original state, if needed.
- ❑ Conduct a parallel installation of Sage 100 2021 when upgrading Sage 100 from version 2020 or lower. Refer to the Sage 100 2021 Customer Upgrade Guide and the Sage 100 2021 Upgrade Checklist.
- ❑ Install Sage 100 2021 Product Update 2. Refer to the Sage 100 2021 Customer Upgrade Guide, the Sage 100 2021 Upgrade Checklist, and Sage Support for information on installing Sage Product Updates.
- ❑ Run the Sage 100 workstation setup process on all applicable workstations, when applicable. Refer to the Sage 100 2021 Installation and System Administrator's Guide.
- ❑ Migrate and convert Sage 100 data to 2021 version 7.00.2.0 when upgrading Sage 100 from a version lower than 2021. Refer to the Sage 100 2021 Installation and System Administrator's Guide.
- ❑ Install Scanco In-Transit 7.0021. Refer to the Installing Scanco In-Transit section on page 11.
- ❑ If hot fixes are available on the Scanco Downloads page for Scanco In-Transit version 7.0021, install Scanco In-Transit 7.0021 hot fixes. Refer to the Scanco In-Transit Hot Fixes section on page 18.
- ❑ Back up all company data files before conducting the company conversion process.
- ❑ Define role security for Scanco In-Transit and Scanco Product Registration from Library Master Security menu > Role Maintenance.
- ❑ Activated Scanco In-Transit 7.0021 from Library Master Setup menu > Scanco Product Registration. Refer to the Registering Scanco In-Transit section on page 15.
- ❑ Run the data conversion process from Library Master Main menu > Company Information.
- ❑ Activate the required and optional Sage 100 modules, if not already activated from Library Master Main menu > Company Information. Refer to the Sage 100 2021 Installation and System Administrator's Guide or Sage 100 Online help.
- ❑ Create and set up company data files for required and optional Sage 100 modules. Refer to the Sage 100 2021 Installation and System Administrator's Guide or Sage 100 Online help.
- ❑ Access the Custom Office Utilities menu and run the update customized panels by selecting Custom Office Utilities menu > Update Customized Panels to Current Level. Review the placement of all user-defined fields. Refer to the Sage 100 2021 Customer Upgrade Guide and the Sage 100 2021 Upgrade Checklist.
- ❑ Reset all grids.
- ❑ Review migrated data in all Sage 100 modules and companies.

Upgrading Sage 100 and Scanco In-Transit

- ❑ Complete the Scanco In-Transit 7.0021 pre-installation checklist. Refer to the Scanco In-Transit Pre-Installation Checklist on page 5.
- ❑ Create a backup of the MAS90 folder. Creating a backup now will save time to revert to the folder's original state, if needed.
- ❑ Conduct a parallel installation of Sage 100 2021 when upgrading from version 2019 or 2020. Refer to the Sage 100 2021 Customer Upgrade Guide and the Sage 100 2021 Upgrade Checklist.
- ❑ Install Sage 100 2021 Product Update 2. Refer to the Sage 100 2021 Customer Upgrade Guide, the Sage 100 2021 Upgrade Checklist, and Sage Support for information on installing Sage Product Updates.
- ❑ Run the Sage 100 workstation setup process on all applicable workstations. Refer to the Sage 100 2021 Installation and System Administrator's Guide.
- ❑ Install Scanco In-Transit 7.0021. Refer to the Installing Scanco In-Transit section on page 11.
- ❑ Migrate data following the Sage 100 parallel migration process. Refer to the Sage 100 2021 Customer Upgrade Guide and the Sage 100 2021 Upgrade Checklist.
- ❑ Reinstall Scanco In-Transit 7.0021. Refer to the Installing Scanco In-Transit section on page 11.
- ❑ If hot fixes are available on the Scanco Downloads page for Scanco In-Transit version 7.0021, install Scanco In-Transit 7.0021 hot fixes. Refer to the Scanco In-Transit Hot Fixes section on page 18.
- ❑ Back up all company data files before proceeding to the company conversion process.
- ❑ Review role security for Scanco In-Transit and Scanco Product Registration from Library Master Security menu > Role Maintenance.
- ❑ Activate Scanco In-Transit 7.0021 from Library Master Setup menu > Scanco Product Registration. Refer to the Registering Scanco In-Transit section on page 15.
- ❑ Run the data conversion process from Library Master Main menu > Company Information.
- ❑ If not previously conducted during the company conversion process from Company Information, access the Custom Office Utilities menu and run the update customized panels by selecting Custom Office Utilities menu > Update Customized Panels to Current Level. Review the placement of all user-defined fields. Refer to the Sage 100 2021 Customer Upgrade Guide and the Sage 100 2021 Upgrade Checklist.
- ❑ Reset all grids.
- ❑ Review migrated data in all Sage 100 modules.

Upgrading Sage 100, Scanco Multi-Bin, and Scanco In-Transit

- ❑ Complete the Scanco In-Transit 7.0021 pre-installation checklist. Refer to the Scanco In-Transit Pre-Installation Checklist on page 5.
- ❑ Create a backup of the MAS90 folder. Creating a backup now will save time to revert to the folder's original state, if needed.
- ❑ Conduct a parallel installation of Sage 100 2021 when upgrading from version 2019 or 2020. Refer to the Sage 100 2021 Customer Upgrade Guide and the Sage 100 2021 Upgrade Checklist.
- ❑ Install Sage 100 2021 Product Update 2. Refer to the Sage 100 2021 Customer Upgrade Guide, the Sage 100 2021 Upgrade Checklist, and Sage Support for information on installing Sage Product Updates.
- ❑ Run the Sage 100 workstation setup process on all applicable workstations. Refer to the Sage 100 2021 Installation and System Administrator's Guide.
- ❑ Install Scanco Multi-Bin 2021.2 version 7.0021.
- ❑ Install Scanco In-Transit 7.0021. Refer to the Installing Scanco In-Transit section on page 11.
- ❑ Migrate data following the Sage 100 parallel migration process. Refer to the Sage 100 2021 Customer Upgrade Guide and the Sage 100 2021 Upgrade Checklist.

- ❑ Reinstall Scanco Multi-Bin 2021.2 version 7.0021.
- ❑ If hot fixes are available on the Scanco Multi-Bin Downloads page for Scanco Multi-Bin 2021.2 version 7.0021, download and install the hot fixes. Refer the Scanco Multi-Bin Installation Guide.
- ❑ Reinstall Scanco In-Transit 7.0021. Refer to the Installing Scanco In-Transit section on page 11.
- ❑ If hot fixes are available on the Scanco Downloads page for Scanco In-Transit version 7.0021, install Scanco In-Transit 7.0021 hot fixes. Refer to the Scanco In-Transit Hot Fixes section on page 18.
- ❑ Back up all company data files before proceeding to the company conversion process.
- ❑ Review role security for Scanco Multi-Bin, Scanco In-Transit, and Scanco Product Registration from Library Master Security menu > Role Maintenance.
- ❑ Activated Scanco Multi-Bin 7.0021 and Scanco In-Transit 7.0021 from Library Master Setup menu > Scanco Product Registration. Refer to the Registering Scanco In-Transit section on page 15.
- ❑ Run the Sage data conversion process from Library Master Main menu > Company Maintenance. Refer to the Scanco Multi-Bin Installation Guide.
- ❑ Prepare Scanco Multi-Bin data files by selecting the Prepare button from Library Master Setup menu > Scanco Product Registration. Refer to the Scanco Multi-Bin Installation Guide.
 - ⚠ **Warning:** This step must be completed for all companies including companies where Scanco Multi-Bin is not activated. The Prepare Data process ensure that data dictionaries are properly merged.
- ❑ When migrating Scanco Multi-Bin from 2018 or lower, review the Scanco Multi-Bin Conversion Audit Report and run Scanco Multi-Bin Purge Old Data process. Refer to the Scanco Multi-Bin Installation Guide.
 - ⚠ **Warning:** Scanco Multi-Bin data files were restructured starting in version 2019. The Scanco Multi-Bin Conversion creates and populates the new 140_MB data files and fields. The Old Data Purge completely removes the old 404 data files and fields. Any Scanco Multi-Bin Custom Crystal Reports referencing 404 data files and fields must be manually updated by a Sage Partner or internal Crystal Reports specialist. A conversion utility to automate this process is not currently available. Refer to the Scanco Multi-Bin Installation Guide.
- ❑ If not previously conducted during the company conversion process from Company Information, access the Custom Office Utilities menu and run the update customized panels by selecting Custom Office Utilities menu > Update Customized Panels to Current Level. Review the placement of all user-defined fields. Refer to the Sage 100 2021 Customer Upgrade Guide and the Sage 100 2021 Upgrade Checklist.
- ❑ Reset all grids.
- ❑ Review and confirm migrated data in all Sage 100, Scanco Multi-Bin, and Scanco In-Transit modules.

Upgrading Sage 100 and Scanco Multi-Bin with a New Install of Scanco In-Transit

- ❑ Create a backup of the MAS90 folder. Creating a backup now will save time to revert to the folder's original state, if needed.
- ❑ Conduct a parallel installation of Sage 100 2021 when upgrading from version 2019 or 2020. Refer to the Sage 100 2021 Customer Upgrade Guide and the Sage 100 2021 Upgrade Checklist.
- ❑ Install Sage 100 2021 Product Update 2. Refer to the Sage 100 2021 Customer Upgrade Guide, the Sage 100 2021 Upgrade Checklist, and Sage Support for information on installing Sage Product Updates.
- ❑ Run the Sage 100 workstation setup process on all applicable workstations. Refer to the Sage 100 2021 Installation and System Administrator's Guide.
- ❑ Install Scanco Multi-Bin 2021.2 version 7.0021. Refer to the Scanco Multi-Bin Installation Guide.
- ❑ Migrate Sage 100 data to Sage 100 2021 through the Sage Data Migration Utility. Refer to the Sage 100 2021 Installation and System Administrator's Guide.
- ❑ Conduct the process for upgrading Scanco Multi-Bin. Refer to the Scanco Multi-Bin Installation Guide.
- ❑ Reinstall Scanco Multi-Bin 2021.2 version 7.0021.

- ❑ If hot fixes are available on the Scanco Multi-Bin Downloads page for Scanco Multi-Bin 2021.2 version 7.0021, download and install the hot fixes. Refer to the Scanco Multi-Bin Installation Guide.
- ❑ After the migration to 2021.2 has been completed and the migrated data has been verified according to the instructions in the Scanco Multi-Bin Installation Guide, Complete the Scanco In-Transit 7.0021 pre-installation checklist.
- ❑ Create a backup of the MAS90 folder. Creating a backup now will save time to revert to the folder's original state, if needed.
- ❑ Install Scanco In-Transit 7.0021. Refer to the Installing Scanco In-Transit section on page 11.
- ❑ If hot fixes are available on the Scanco Downloads page for Scanco In-Transit version 7.0021, install Scanco In-Transit 7.0021 hot fixes. Refer to the Scanco In-Transit Hot Fixes section on page 18.
- ❑ Define role security for Scanco In-Transit and Scanco Product Registration from Library Master Security menu > Role Maintenance.
- ❑ Activated Scanco In-Transit 7.0021 from Library Master Setup menu > Scanco Product Registration. Refer to the Registering Scanco In-Transit section on page 15.
- ❑ Prepare Scanco Multi-Bin data files by selecting the Prepare button from Library Master Setup menu > Scanco Product Registration. Refer to the Scanco Multi-Bin Installation Guide.
 - ⚠ **Warning:** This step must be completed for all companies including companies where Scanco Multi-Bin is not activated. The Prepare Data process ensure that data dictionaries are properly merged.
- ❑ When migrating Scanco Multi-Bin from 2018 or lower, review the Scanco Multi-Bin Conversion Audit Report and run Scanco Multi-Bin Purge Old Data process. Refer to the Scanco Multi-Bin Installation Guide.
 - ⚠ **Warning:** Scanco Multi-Bin data files were restructured starting in version 2019. The Scanco Multi-Bin Conversion creates and populates the new 140_MB data files and fields. The Old Data Purge completely removes the old 404 data files and fields. Any Scanco Multi-Bin Custom Crystal Reports referencing 404 data files and fields must be manually updated by a Sage Partner or internal Crystal Reports specialist. A conversion utility to automate this process is not currently available. Refer to the Scanco Multi-Bin Installation Guide.
- ❑ If not previously conducted, activate the required and optional Sage 100 modules from Library Master Main menu > Company Information. Refer to the Sage 100 2021 Installation and System Administrator's Guide or Sage 100 Online help.
- ❑ If not previously conducted, create and set up company data files for required and optional Sage 100 modules. Refer to the Sage 100 2021 Installation and System Administrator's Guide or Sage 100 Online help.
- ❑ Review and confirm migrated data in all Sage 100 modules and Scanco Multi-Bin.
- ❑ Set up Scanco In-Transit settings in Item Maintenance.

Upgrading Sage 100 and Scanco In-Transit with a New Install of Scanco Multi-Bin

Complete the Scanco In-Transit 7.0021 pre-installation checklist. Refer to on page 5.

- ❑ Create a backup of the MAS90 folder. Creating a backup now will save time to revert to the folder's original state, if needed.
- ❑ Conduct the upgrade process for Sage 100 and Scanco In-Transit. Refer to the Upgrading Sage 100 and Scanco In-Transit section on page 11.
- ❑ After Sage 100 and Scanco In-Transit are successfully upgraded, install Scanco Multi-Bin 2021.2 version 7.0021. Follow the New Installation of Sage 100 with Scanco Multi-Bin checklist found in the Scanco Multi-Bin Installation Guide.
- ❑ After installing Scanco Multi-Bin, reinstall Scanco In-Transit.
 - ⚠ **Warning:** Scanco In-Transit must be reinstalled after adding Scanco Multi-Bin when Scanco In-Transit existed in Sage 100 prior to the upgrade.

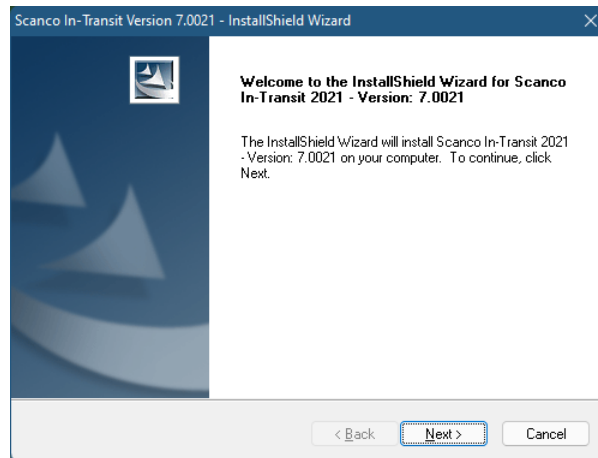
- ❑ If hot fixes are available on the Scanco Downloads page for Scanco In-Transit version 7.0021, install Scanco In-Transit 7.0021 hot fixes. Refer to the Scanco In-Transit Hot Fixes section on page 18.
- ❑ Define role security for Scanco In-Transit and review existing role security settings from Library Master Security menu > Role Maintenance.
- ❑ Activated Scanco Multi-Bin and Scanco In-Transit 7.0021 from Library Master Setup menu > Scanco Product Registration. Refer to the Registering Scanco In-Transit section on page 15.
- ❑ If not previously conducted, activate the required and optional Sage 100 modules from Library Master Main menu > Company Information. Refer to the Sage 100 2021 Installation and System Administrator's Guide or Sage 100 Online help.
- ❑ If not previously conducted, create, and set up company data files for required and optional Sage 100 modules. Refer to the Sage 100 2021 Installation and System Administrator's Guide or Sage 100 Online help.
- ❑ Prepare Scanco Multi-Bin data files by selecting the Prepare button from Library Master Setup menu > Scanco Product Registration. Refer to the Scanco Multi-Bin Installation Guide.
 - ⚠ **Warning:** This step must be completed for all companies including companies where Scanco Multi-Bin is not activated. The Prepare Data process ensure that data dictionaries are properly merged.
- ❑ Review and confirm migrated data in all Sage 100 modules and Scanco In-Transit.
- ❑ Set up Scanco Multi-Bin.

Installing Scanco In-Transit

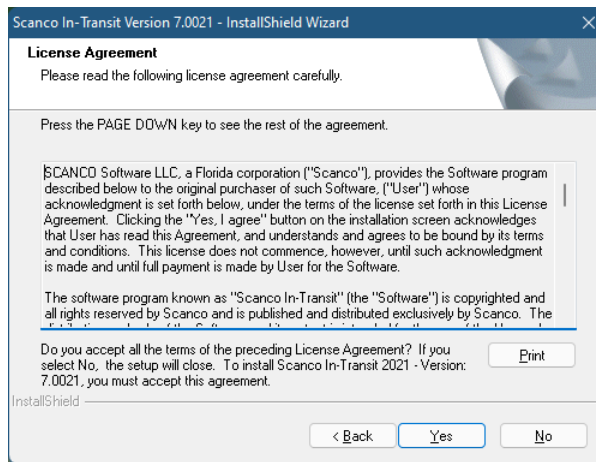
Conduct the following steps after Sage 100 2021 with Product Update 2 is installed successfully.

How to Install Scanco In-Transit

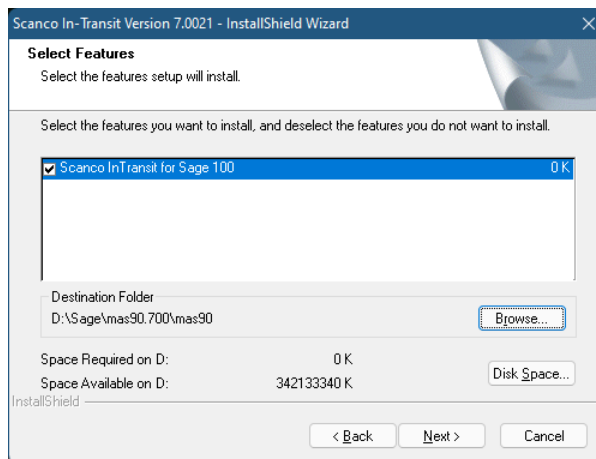
1. Download the InTransit_70021.exe file from the Scanco Downloads page at <https://scanco.com/scanco-downloads>
2. Right click on the Scanco In-Transit executable file.
3. Select Run as administrator.



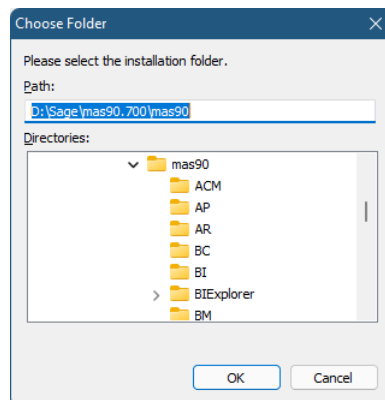
4. Select the Next button from the Scanco In-Transit Welcome window.
5. Review the Scanco In-Transit License Agreement.



6. Select the Yes button to agree to the Scanco In-Transit License Agreement and to continue with the Scanco In-Transit installation process.
7. Select the Scanco In-Transit check boxes to install Scanco In-Transit. Both check boxes must be selected to successfully install Scanco In-Transit.



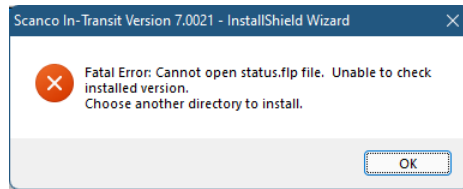
8. Accept the default location of Sage 100 or select the Browse button to specify the location of Sage 100. The Choose Folder window displays after the Browse button is selected.



Specify the location of Sage 100 in the Path field. Select the OK button to return to the Select Features window.

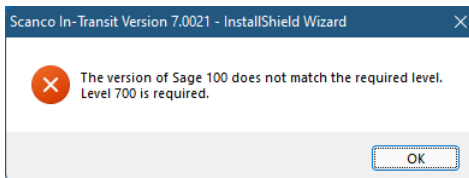
9. Select the Next button from the Select Features window. The installed version of Sage 100 Standard, Sage 100 Advanced or Sage 100 Premium is validated. A warning message or the Install Scanco In-Transit window displays.

Warning: Scanco In-Transit must be installed to the same location where Sage 100 Standard, Sage 100 Advanced or Sage 100 Premium is installed. When an invalid directory location is entered in the Destination Folder field found on the Select Features window, the following message displays.

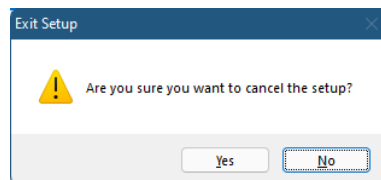


Select the OK button and modify the location where Sage 100 Standard, Sage 100 Advanced or Sage 100 Premium is installed.

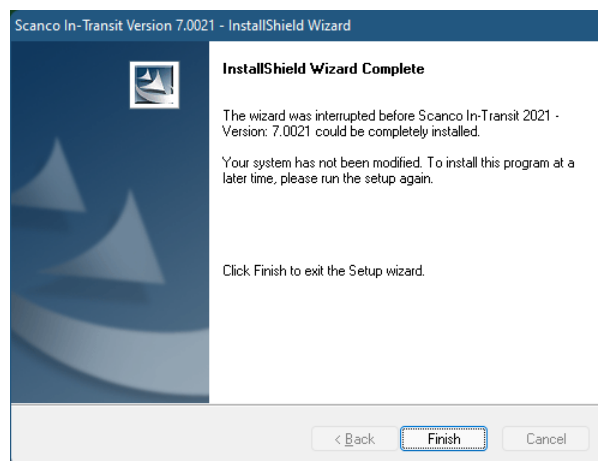
Warning: When Sage 100 is installed but is not version 7.00.2.0, the following message displays.



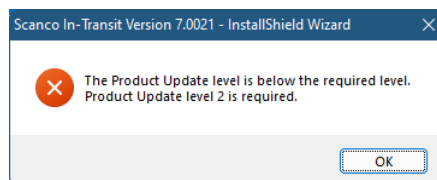
Select OK and cancel the Scanco In-Transit installation process. Select the Cancel button from the Select Features window. The following message displays.



Select Yes in the message. Select the Finish button from the InstallShield Wizard Complete window to cancel the Scanco In-Transit installation process.

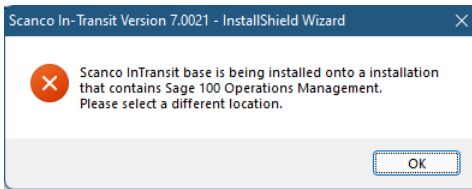


Warning: When the Sage 100 2021 Product Update 2 has not been installed at the specified Sage 100 Standard, Sage 100 Advanced or Sage 100 Premium location, the following message displays



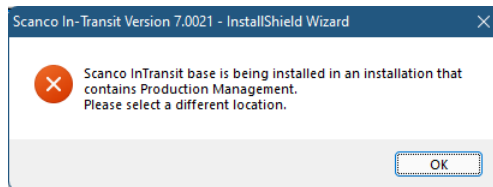
Select the OK button and then Cancel the Scanco In-Transit installation process. Install Product Update 2 and then install Scanco In-Transit.

- Warning:** Scanco In-Transit may not be installed in the same location where Sage Operations Management is installed. The following message displays when the selected location contains Sage Operations Management.



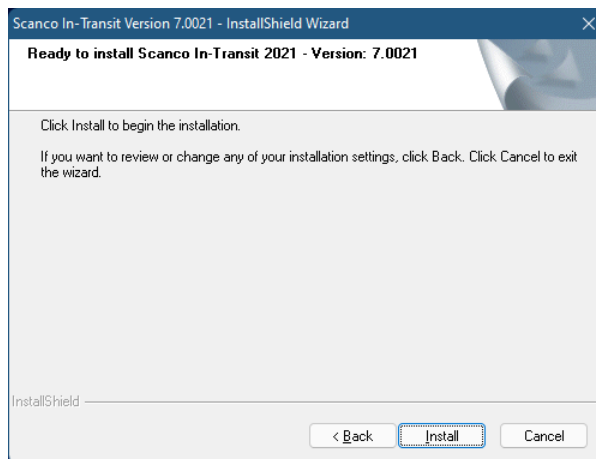
Select the OK button and then Cancel from the Select Features window.

- Warning:** Scanco In-Transit may not be installed in the same location where Sage Production Management is installed. The following message displays when the selected location contains Sage Production Management.

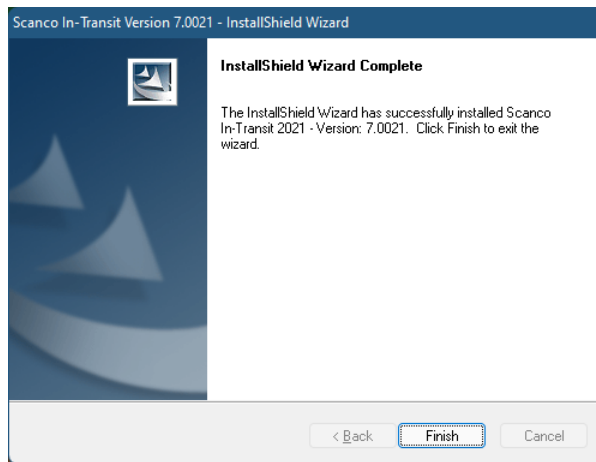


Select the OK button and then Cancel from the Select Features window.

10. Select the Install button from the following window to install Scanco In-Transit.



11. Select the Back button to return to the Select Features window. Select the Cancel button, select Yes in the message *Are you sure you want to cancel the setup?* and the Finish button from the InstallShield Wizard Complete window to cancel the Scanco In-Transit installation process.
12. Select the Finish button from the InstallShield Wizard Complete window to complete the Scanco In-Transit installation process.



Registering Scanco In-Transit

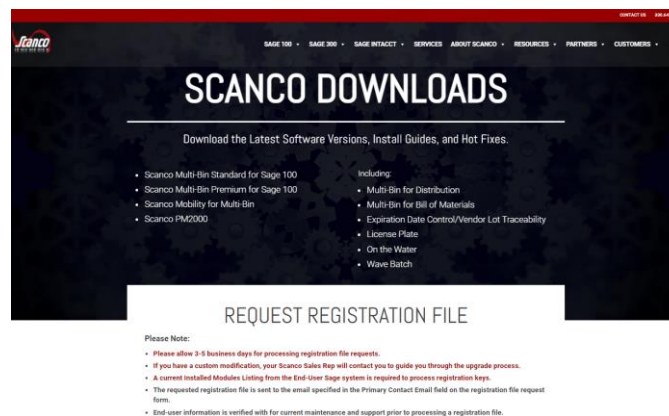
A new registration file must be requested and activated

1. For a new installation of Scanco In-Transit,
2. When a new module is purchased, such as Scanco Multi-Bin,
3. When the Sage 100 user count changes,
4. When migrating from a lower year version, for example 2018 version 6.00.3.0 to 2021.2 version 7.00.2.0, or
5. When the subscription plan has expired or modified.


A new registration file is not required for service releases or product updates when a registration file was previously activated at the current year version. For example, a new registration file is not required when moving from version 7.00.0.0.0 to 7.00.2.0.0.

How to Obtain Scanco In-Transit Registration

1. Access the Scanco Downloads page at <https://scanco.com/scanco-downloads/>.




2. Scroll down and click on Registration File Request.
3. Enter the required information in the Scanco Registration form. Fields noted with an asterisk (*) are required.
4. Select the Scanco In-Transit check box. Select the check boxes for Scanco Multi-Bin when Scanco Multi-Bin have been purchased in addition to Scanco In-Transit.
5. Select the Submit button.

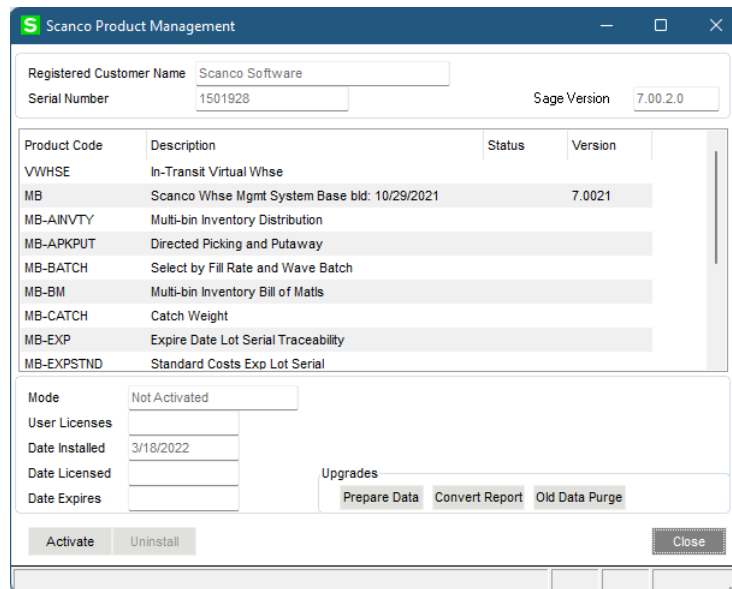
 **Note:** Please allow 1-3 business days for processing Scanco registration requests. The Scanco registration file is sent to the email specified in the Primary Contact Email field on the Registration File Request form.

How to Register Scanco In-Transit

1. When a license registration file is received via email, place the registration text file at ...\\MAS90_Scanco in the location where Sage 100 is installed.

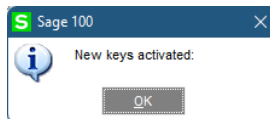
 **Note:** Submit registration request information before downloading from the Scanco In-Transit installer from the Scanco Downloads page and installing Scanco In-Transit.

2. Access Library Master Setup menu > Scanco Product Registration.

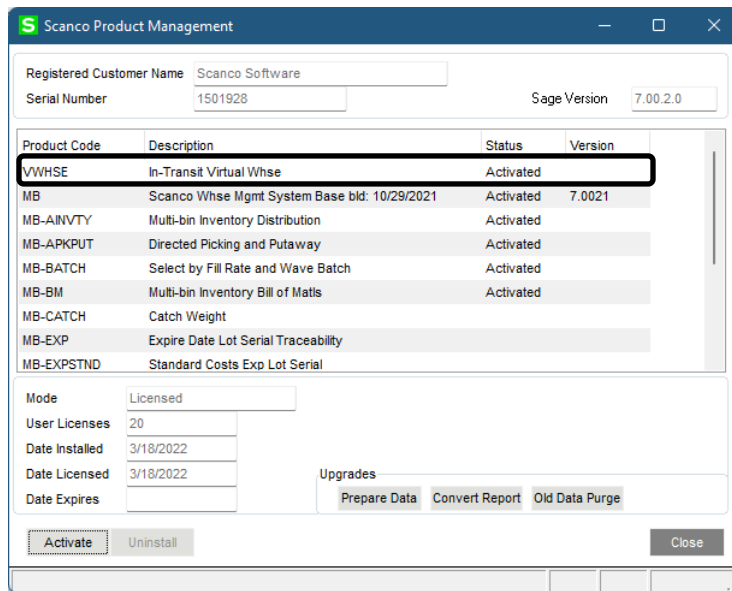


Product Code	Description	Status	Version
VWHSE	In-Transit Virtual Whse		
MB	Scanco Whse Mgmt System Base bld: 10/29/2021		7.0021
MB-AINVTY	Multi-bin Inventory Distribution		
MB-APKPUT	Directed Picking and Putaway		
MB-BATCH	Select by Fill Rate and Wave Batch		
MB-BM	Multi-bin Inventory Bill of Mats		
MB-CATCH	Catch Weight		
MB-EXP	Expire Date Lot Serial Traceability		
MB-EXPSTND	Standard Costs Exp Lot Serial		

3. Verify the correct Sage 100 Serial number and User Licenses displays.
4. Select the Activate button.
5. Select OK in the following message.



6. Verify Activated displays in the Status field for the VWHSE product code record.





7. Select the Close button.

Scanco In-Transit Hot Fixes


Occasionally hot fixes are required to be installed after installing Scanco In-Transit. Access Scanco In-Transit hot fixes from the Scanco Downloads page <https://scanco.com/scanco-downloads/>.

How to Install Scanco In-Transit Hot Fixes

1. Access the Scanco Downloads page <http://info.scanco.com/scanco-downloads>
2. Click on the Scanco In-Transit menu option.
3. Click on Hot Fixes from the Scanco In-Transit menu.
4. Review the available hot fixes for Scanco In-Transit for the currently installed version.
 **Warning:** Hot fixes are version and module specific. Only install hot fixes for the Scanco In-Transit installed version.
5. Click on a hot fix link to be directed to the download file.
6. Click on the Download button.
7. Specify the location to download the hot fix.
8. Extract the hot fix file to the MAS90 directory where Sage 100 and Scanco In-Transit are installed.
 **Warning:** If the hot fix zip file is extracted to a location other than the MAS90 directory, the hot fix programs must be copied to the file location specified in the hot fix zip file.
9. Select to replace the files in the destination if the hot file was extracted to the MAS90 directory where Sage 100 and Scanco In-Transit are installed. The hot fix program is now located in the correct directory in the Sage 100 and Scanco In-Transit installation.
10. Review the document(s) included in the hot fix download file. Descriptions and instructions are included in this documentation.

Scanco In-Transit Developer Code Change

Starting with the Scanco In-Transit 7.0021 release, the developer code has been changed from 404 (ACS Group) to 140 (Scanco). When upgrading from 2018 or lower, a thorough review of all data is strongly advised before processing in Scanco In-Transit 7.0021.

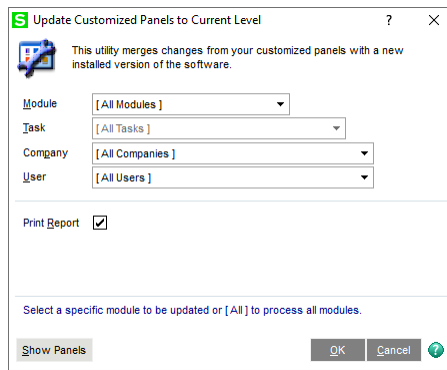
 **Warning:** Any custom Crystal Reports referencing 404 data files and fields must be manually updated by a Sage Partner or internal Crystal Reports specialist. A conversion utility to automate this process is not available from Scanco In-Transit 7.0021.

Update Custom Panels to Current Level

Once Scanco In-Transit has been installed, it is prudent to merge existing screen customizations with the screen modifications that Scanco In-Transit provides. Sage provides the Custom Office Update Custom Panels to Current Level utility to accomplish this task.

To merge custom panels:

1. Navigate to Custom Office > Utilities > Update Custom Panels to Current Level
2. While specific Module, Task, Company, and User selections can be made, it is advised to run this utility for **all** options.



3. Select the OK button.
4. The system will display a process bar displaying the screen libraries being updated.
5. After the update is completed, if the Print Report option was selected, select to Print or Preview the Custom Office Customizer Detail Report. This is an optional step.