



Operations Management for Sage 100

Enhance your manufacturing operations

Operations Management for Sage 100 is a comprehensive, integrated job management system that delivers both operational and financial information from a single, reliable source. It improves the communication flow between departments by reducing redundancies, minimizing paperwork, and delivering management tools critical to your success.



End to End Control

- Job Estimating/Quoting
- Sales Orders
- Work Tickets
- Data Collector
- Purchasing

Simplify your workflow with accurate job cost estimates.

Operations Management for Sage 100 provides tools to quickly get accurate job cost estimates by determining the costs of the job's components—material, labor, and subcontracted services. With a complete view of total costs and pricing information, you can make the best pricing decision.

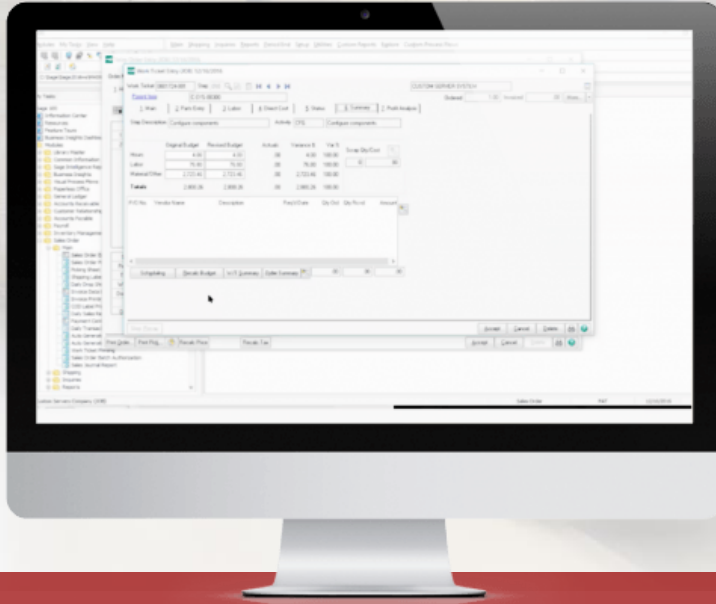
Real-time integration with Sage 100 means financial and operations data are in sync. Because manual data entry is eliminated, data are more accurate.

Make-to-order manufacturers can streamline the quote to delivery process while improving profitability.



FOR MORE INFORMATION OR TO SCHEDULE A DEMO:
www.scanco.com

OPERATIONS MANAGEMENT FOR SAGE 100



1 Job Estimating/Quoting

- ✓ Quickly get accurate job cost estimates by determining the costs of the job's components

2 Data Collector

- ✓ Quickly and accurately validate and import both parts and labor transactions in the system

3 Sales Orders/Work Tickets

- ✓ Simplify the order entry by generating a work ticket directly from a sales order

4 Purchasing

- ✓ Manage the purchasing process to avoid materials shortages that impact delivery schedules

5 Manufacturing 100

- ✓ Eliminate manual tasks with mobile barcode scanning. This barcode data collection system tracks Material Issues, Labor, Status Updates, Finished Goods Entries, and Time Card

6 Enhanced Scheduling

- ✓ Schedule resource allocation and prioritize jobs to ensure on-time delivery and profitability

7 Field Service & Dispatch

- ✓ Automate your service delivery and tracking process to increase field service efficiency and revenue

8 Time Tracker

- ✓ Let workers report on what they have completed and the materials they have used in real-time.

9 Purchase Agent

- ✓ Manage the purchasing process to avoid materials shortages and ensure the right materials arrive just in time.

10 Product Configurator

- ✓ Wizard guides you through the process of configuring a customer's product. Rules-based analysis only allows available product options and configurations.



FOR A FULL LIST OF FEATURES OR TO SCHEDULE A DEMO:
www.scanco.com

Sage Tech Partner
Plus