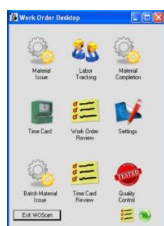




Manufacturing Efficiency and Automation

Seamless, cost-efficient, and easy to upgrade.

Scanco's Manufacturing Automation provides make-to-order, assemble-to-order, and engineer-to-order manufacturers a more efficient and effective manufacturing process through Sage 100's Work Order Module.



Flexible & Efficient

- Preset Options
- Cost-Efficient
- Eliminate Data Entry
- Increased Automation
- WOScan Integration

Manufacturing Automation Doesn't Have to Be Complicated

There's no need for expensive software that operates outside of your accounting system. At Scanco, we build the power into your Sage 100 system—bringing you powerful enhancements which integrate with our mobile scanning solutions.

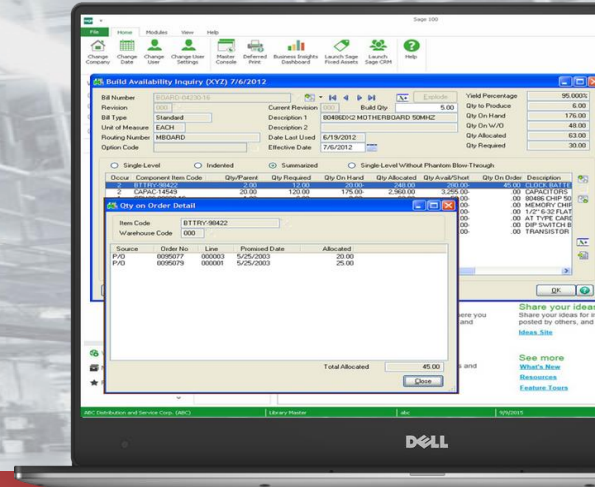
Our solution makes Make-to-Order manufacturing simple and efficient. It is seamless, cost-efficient, and it's easy to upgrade.

With increased automation and preset options, Manufacturing Efficiency will help minimize user entry and maximize workflow.



FOR MORE INFORMATION OR TO SCHEDULE A DEMO:
www.scanco.com

SCANCO MANUFACTURING AUTOMATION



1 System knows which Sales Orders to build Work Orders from and does not duplicate

2 Automatically create sub-assemblies

3 New button in S/O Entry allows for Work Order creation on-the-fly from S/O Entry lines

4 Build Availability Inquiry displays FG and BoM Components with Quantity on Hand, Available, Required and Short. Displays On PO and On WO detail with delivery dates and quantities.

5 Work Order number is linked back to Sales Order for easier tracking

6 Auto-Close Work Orders when processing completions

7 Option to "Apply Entire Costs To Completed Quantity" when processing Completions for a given Work Order

8 Enter Work Orders with released status

9 Auto-Finish uses a standard set of options to complete the Operation and Scheduling Tabs

10 The system provides for leveled Finished Good Unit Cost assignment and posting when partial "Manual" Material Issues and Labor are performed for FIFO, LIFO and Lot/Serial Valuation Types.

11 WOScan Integration Features/Functions

✓ Immediate upload to W/O Transaction Entry via Wi-Fi with an option to auto-update

✓ Optional Completion Backflush of Material Issues and/or Labor Transactions

✓ Auto-Close Work Order feature when processing Completions

✓ Option to Apply "Entire Costs to Completed Quantity" when processing Completions for a given Work Order

✓ Option to print Completion Labels for the completed quantity using the default Crystal form and printer

✓ Choose from the following Batch Options -

Standard: Stock Sage 100 Handling

Work Order Number: Separate Batches by Work Order Number

Transaction Type: Separate batches by Material Issues, Labor, and Completions

Device ID: Separate Batches by Scanner ID. The last 3 digits of the Scanner ID are used as the Batch User ID code.



FOR A FULL LIST OF FEATURES OR TO SCHEDULE A DEMO:
www.scanco.com

Sage Tech Partner
Plus