

Scanco Manufacturing Automation Suite

Manufacturing Automation Efficiency for Sage 100's Work Order Module

Scanco Manufacturing Automation is a suite of enhancements designed to provide manufacturers with a more efficient and effective manufacturing process through Sage 100's Work Order Module. With increased automation and preset options, Manufacturing Automation will help minimize user entry and maximize workflow.

Efficient & Effective

- Manufacturing Efficiency
- Make-To-Order
- Outside Processing
- Auto-Generate Pos
- Scheduling
- WOScan Integration

Manufacturing Efficiency

Scanco Manufacturing Efficiency provides automation tools for streamlining W/O entry and processing with automation options for creating and closing work orders. Streamline W/O creation by auto-generating work orders and sub-assemblies directly from Sales Orders.

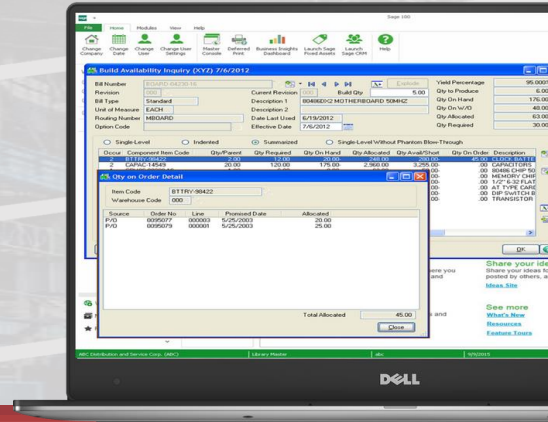
Scanco Manufacturing Efficiency provides a dashboard for daily work center scheduling and shows the details of Work Orders and their respective time requirements.

Partnering with WOScan, wireless handheld devices capture W/O transaction data on the shop floor in real time, without the need for computer workstations.



FOR MORE INFORMATION OR TO SCHEDULE A DEMO:
www.scanco.com

Scanco Manufacturing Automation Suite



1 Manufacturing Efficiency

- ✓ Track "On Work Order" and "Required for Work Order" quantities separately
- ✓ Auto-Generate Material Issue and Labor transactions
- ✓ Work Order Dashboard displays more data and provides multiple drill-downs
- ✓ Labor Status handling assigns status changes as labor transactions are processed

2 Make to Order

- ✓ System knows which Sales Orders to build Work Orders from and does not duplicate
- ✓ Automatically create sub-assemblies with sub-assembly replenishment handling option
- ✓ Button in S/O Entry allows for Work Order creation on-the-fly from S/O Entry lines
- ✓ Work Order number is linked back to Sales Order for easier tracking

3 Outside Processing

- ✓ Maintain Vendors and their Line Detail for Outside Processing type Work Centers
- ✓ Auto-generate Outside Processing POs from the Operations tab with display of PO and Receipt Detail
- ✓ PO and Receipt detail handling added into WO Traveler
- ✓ Color coordinate Outside Processing Operation Lines for status indication

4 Auto-Generate POs From Work Orders

- ✓ Component Inventory
- ✓ Links WO Number to PO line to eliminate duplication
- ✓ Quantity, Unit Cost and Extension
- ✓ Selection screen allowing for WO, Parent Item, WO Due Date, Planner Code, and Buy Code

5 Auto-Generate POs From Inventory

- ✓ Selection screen allowing for Item, Product Line, Buyer Code, Planner Code and others along with demand
- ✓ Accounts for quantity availability calculations and Replenishment detail
- ✓ PO generation detail such as Vendor, Qty, Unit Cost, and Extension
- ✓ Sources of SO Number, SO Promise Date, WO Number, WO Due Date, and MRP Projections to select Component Inventory

6 Scheduling

- ✓ Work Center Dashboard allows for daily Work Center schedule handling
- ✓ Provides detail of Work Orders and their respective time requirement
- ✓ Allows for moving Work Orders and rescheduling of future operation steps
- ✓ Daily Capacity of Work Center



FOR A FULL LIST OF FEATURES OR TO SCHEDULE A DEMO:
www.scanco.com

Sage Tech Partner
Plus