



Scanco Multi-Bin for Distributors

Improves inventory quality, accuracy, and efficiency.

Intelligent Multi-Bin is designed with distributors in mind. It can grow with your organization, allowing you to have full-blown warehouse management.



Distribution Features

- Directed Picking
- Directed Putaway
- Wave Pick Sheets
- Transfer & Rotate Inventory
- Reserve and Release Inventory
- RF, Wireless, & Apple Integration
- License Plate Pallet & Case pack Inventory

Scanco Multi-Bin reduces inventory shrinkage and obsolescence.

Includes the experience of 20 years of integration exclusively for Sage 100. It provides seamless multi-bin and warehouse management system (WMS) functionality integrated for Sage 100 ERP.

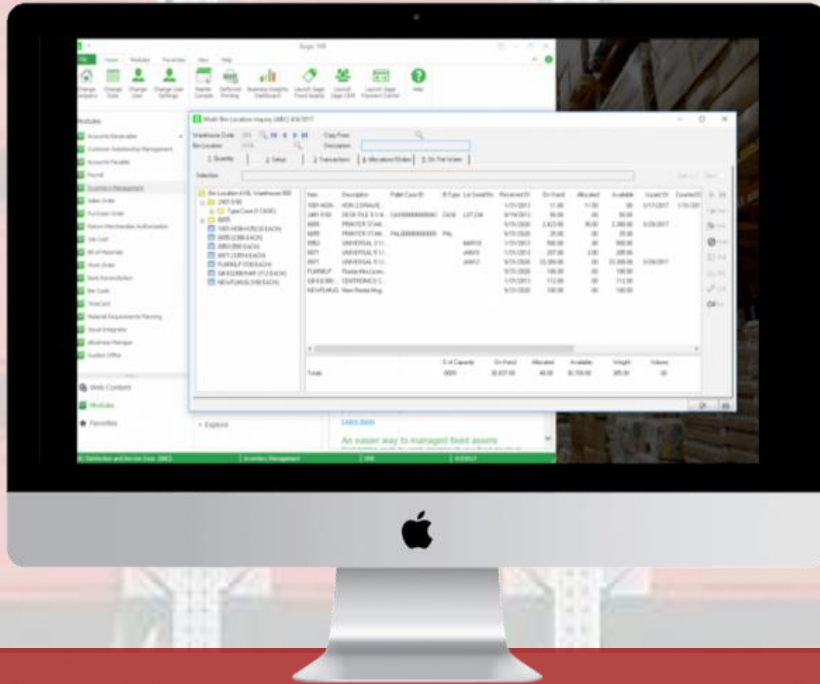
It is flexible to set up in order to achieve quick start-up and simple design or can be set up for more advanced needs utilizing WMS features.

The built-in Directed Picking and Directed Putaway features provide comprehensive options. It is compatible with most extended solutions, developer enhancements, and business object integration.



FOR MORE INFORMATION OR TO SCHEDULE A DEMO:
www.scanco.com

Scanco Multi-Bin for Distributors



1 Warehouse Zones

- ✓ Define pick zone, primary pick area, overflow area, staging areas
- ✓ Create warehouse regions/zones and aisles to control goods placement and improved grouping

2 Directed Picking

- ✓ Pick by order, wave picking, and wave batch
- ✓ Define picking algorithms

3 Directed Putaway

- ✓ Define location capacity to improve putaway
- ✓ Choose to store goods in same location, or not

4 Transfers

- ✓ Transfer goods individually or by group to another location. Transfers are immediate with full audit trail.

- ✓ Can move sales order and work order allocations along with transfer

- ✓ Transfer by location and by item. Transfer any number of items in just a few clicks

5 Physical Counts

- ✓ Select by last counted by item and by when multi-bin inventory was last counted
- ✓ Group and select by warehouse regions and locations
- ✓ Print physical worksheets by locations & items

6 Location Capacity Management

- ✓ Computed by item volume and quantity in location
- ✓ Putaway evaluates location capacities and evaluates inventory stored in primary locations
- ✓ Replenishment and management reporting evaluates capacity for locations

7 Reports



FOR A FULL LIST OF FEATURES OR TO SCHEDULE A DEMO:
www.scanco.com

Sage Tech Partner
Plus